



Situation Report: Confirmed COVID-19	Location: The Gambia
Date of Report: 05th & 06th Dec 2020	Investigation Start Date: 17th March 2020 as of 18hrs.
Prepared by:	Epidemiology and Disease Control Unit, MoH, The Gambia

I. HIGHLIGHTS

This is the 214th national situation report since the confirmation of the first case of the novel coronavirus disease (COVID-19) in The Gambia, on the 16th March 2020

- No new COVID-19 related death registered
 - No posthumous sample collected
- 2 new cases registered, taking the total number of COVID-19 cases ever confirmed in the country to 3,772
 - The new cases – a male and a female – are aged 26 and 41 years, respectively, who both sought to be tested by virtue of being intending travellers
- 376 new laboratory test results received from NPHL
 - Of these, 5 (3 repeats and 2 new) tests returned positive representing a test positivity rate of 0.5% (1.3% overall)
 - None returned indeterminate
- 3 COVID-19 patients newly recovered and got discharged
- The country currently has no people in quarantine, 27* active cases and a crude case-fatality ratio of 3.3%
 - *4 recently confirmed cases absconded to Senegal

COVID-19 SITUATION IN NUMBERS

Globally

- Confirmed Cases: **67,377,453**
- Recoveries: **46,572,428**
- Deaths: **1,541,373**

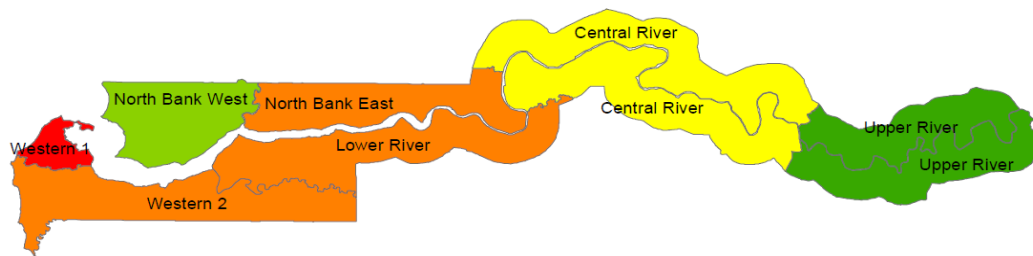
Senegal

- Confirmed Cases: **16,477**
- Recoveries: **15,776**
- Deaths: **338**

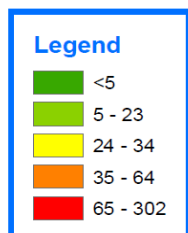
The Gambia

- Confirmed Cases: **3,772**
- Recoveries: **3,618**
- Deaths: **123**

II. EPIDEMIOLOGICAL DESCRIPTION



0 5 10 20 30 40 Miles



WGS_1984_Complex_UTM_Zone_28N

Figure 1: Geographic Distribution of COVID-19 Cases Per 100,000 Pop. by Region, The Gambia, March 16th – 2nd Dec, 2020

COVID-19 Tests Conducted Per 100,000 Pop., Nov 3rd - Dec 2nd, 2020

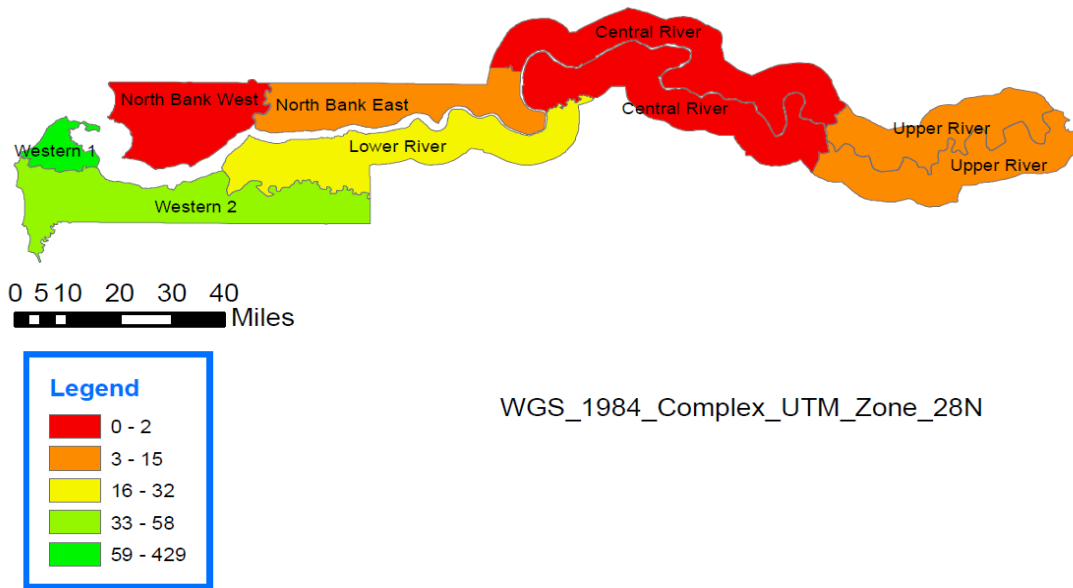


Figure 2: Geographic Distribution of Recent COVID-19 Tests Conducted Per 100,000 Pop. by Region, 3rd Nov. – 2nd Dec, 2020

- Western 1 Health Region has a disproportionately higher number of cases than all the health regions (See Fig. 1)
- Regions furthest from testing sites had the lowest testing rates over the last 30 days (See Fig. 2)

Figures 3 and 4 are the age-sex distribution and the Epi-curve of confirmed cases by reported date, respectively.

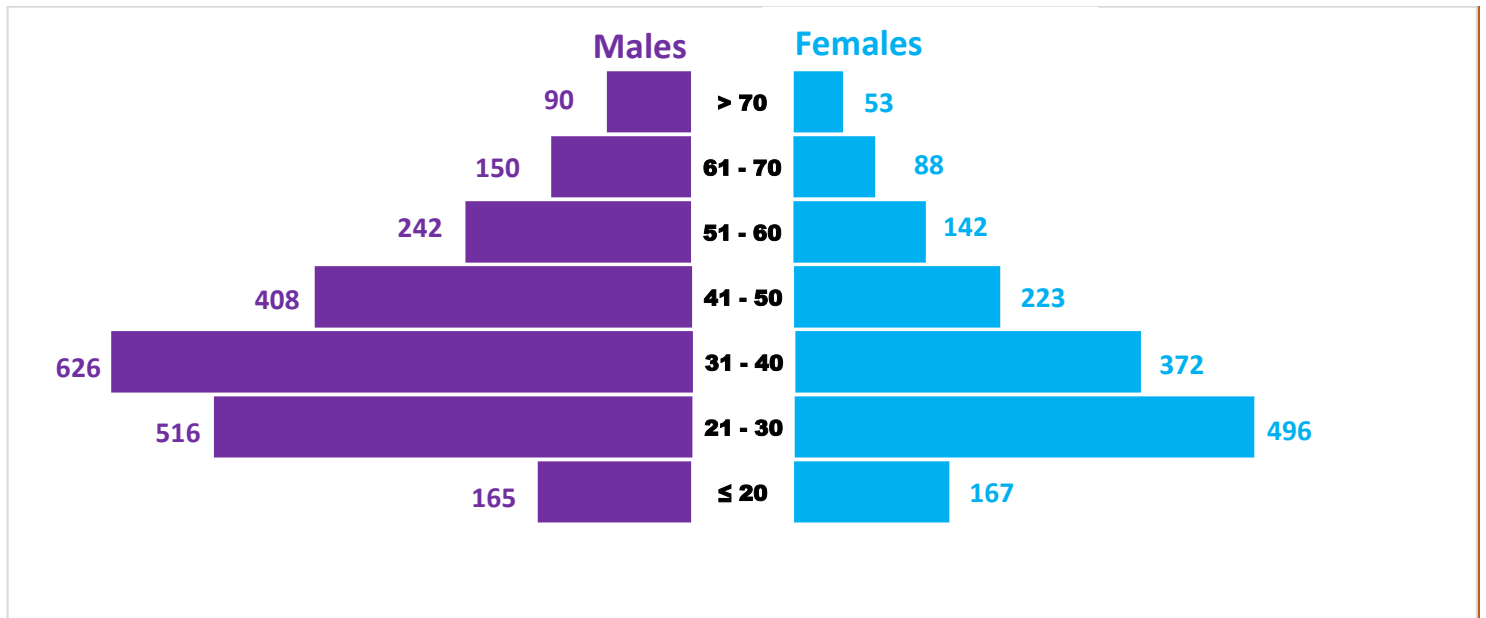


Fig. 3: Age-Sex Distribution of Confirmed COVID-19 Cases, The Gambia, 2020

* This excludes the 27 confirmed cases whose demographic information are not yet available

- About 59% of the confirmed cases are males (See Fig. 3)

- About 62% of the confirmed cases are below age 40 (See Fig. 3)
- The only age category with a few more female cases than males is the “age 20 and less” category (See Fig. 3)

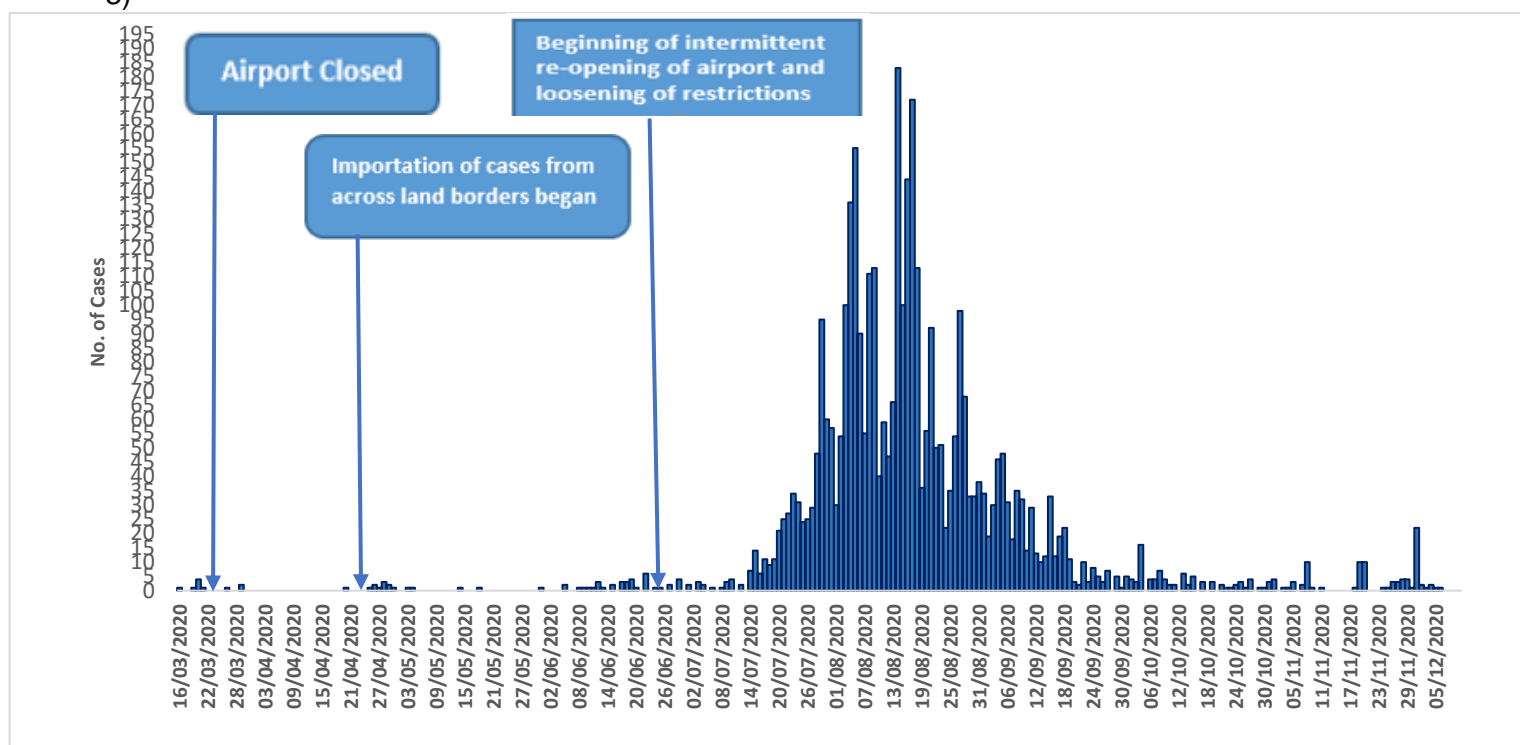


Fig. 4: Epidemic Curve of Laboratory-Confirmed Cases by Date Reported, COVID-19 Pandemic, The Gambia, 2020*.
 * A considerable amount of time elapsed between date of reporting and the date of laboratory confirmation of some cases

- Three main waves of infection occurred – the pre airport closure wave, the importation from Senegal wave and the intermittent airport re-opening and loosening of restrictions wave (See Fig. 4)

Table 1: Summary of New and Cumulative Public Health Response Outputs, COVID-19 Pandemic, The Gambia, 2020

Status	New	Cumulative
No. of active cases in institutional isolation		20
No. of COVID-19 patients on oxygen support		0
No. of patients recovered and discharged	3	
In Quarantine	0	0
Completed Quarantine	0	2,731
Completed follow-up (asymptomatic people with travel history to affected countries) *	0	310
No. of Contact(s) Identified**	0	
No. of Contacts being monitored	60	
No. of Contacts who completed 14-day follow-up	0	14,664
No. of Contacts lost to follow-up	0	51
Total Tests conducted (Repeat Test (s))***	341 (35)***	26,448
Positive test result (Repeat Test (s))	2 (3)	3,770
Negative test result (Repeat Test (s))***	339 (32)***	21,553
Inconclusive test result (Repeat Test (s))***	0 (0)***	

* Follow-up completed prior to the 17th March (when the first confirmed case was reported)

** Includes both low-risk and high-risk contacts and not mutually exclusive with number quarantined (as some have been quarantined)

*** Includes repeat tests in bracket

III. Major Response Activities

Table 2: Major response activities undertaken newly, COVID-19 Outbreak, The Gambia, 2020

Component	Interventions
Coordination	<ul style="list-style-type: none"> Daily coordination meetings held at both central and regional levels
Surveillance/ Laboratory	<ul style="list-style-type: none"> 376 new laboratory test results received from NPHL Of these, no test result returned inconclusive or indeterminant and 5 (3 repeats and 2 new) tests returned positive for COVID-19
Case Management / Psychosocial Support & Research	<ul style="list-style-type: none"> 4 new patients received psychosocial first aid services 3 new patients recovered and got discharged

Risk Communication And Community Engagement

Total No. of Calls received on toll free helpline	No. of communities reached on COVID-19 through messaging on prevention and access to services	Toll Free Helpline: No. of people shared their concerns and asking questions/clarifications for available support services to address their needs	Radio phoning programme: No. of people shared their concerns and asking questions/clarifications for available support services to address their needs	TV phoning programme: No. of people shared their concerns and asking questions/clarifications for available support services to address their needs	Social Media pages: No. of people react to post and or shared their concerns and asking questions/clarifications for available support services to address their needs
44	23	42	18	0	175

IV. GAPS/CHALLENGES:

- CBS activities not translating to increase in the number of daily tests being conducted
- Regions furthest from testing sites had the lowest testing rates over the last 30 days
- Support for innovative countrywide risk communication strategies and activities on COVID-19 is suboptimal
- Security lapses at some of the treatment centers resulting in the abscondence of patients
- Dwindling compliance with mask-wearing requirements
- Low turn-out at COVID-19 sample collection sites resulting in fewer number of daily tests
- Denial, misinformation, stigma and discrimination against COVID-19 affected families
- The lack of a strong and reliable Internet connection at the NPHL is hampering the implementation of e-surveillance at the laboratory

V. NEXT STEPS/RECOMMENDATIONS:

- CBS activities need to be synchronized with MRC's ILI surveillance to spur up testing rates in the hinterland
- Expedite the process of having testing sites in CRR and NBW
- Intensify risk communication and community engagement activities, on COVID-19 at community level, including at LUMOS, in a bid to curtail community transmission and dispel misinformation and denial
- More tests required in the catchment area of the MRC Keneba testing site to ascertain the extent of spread of COVID-19

- Security needs to be beefed up at all COVID-19 treatment/isolation centers to prevent the abscondence of patients
- Strengthen community-based surveillance in order to increase awareness and testing rates
- Thorough enforcement of the mandatory mask-wearing regulation
- Ensure there is reliable internet access at the NPHL to support the effective implementation of e-surveillance
- IPC measures should be strictly adhered to in all public and private health healthcare facilities
- Provision of adequate stocks of PPEs to all health facilities
- Health workers to observe all COVID-19 preventive measures including the donning of appropriate PPEs at all times

For comments or questions, please contact:
Sana .M. Sambou
 Public Health Emergency Operations Center
 Epidemiology and Disease Control Unit, The Gambia
Email: sanasambou@hotmail.com **Phone:** +220 3516320/2422949

PARTNERS

