
Ministry of Health, Health Service Statistics 2018



April 2019

Authors:

Dr Sowe, Musa MM

Public Health Specialist: Health System Management, Information Management, Program Planning, Monitoring, Evaluation Accountability and Learning.

Doctor of Philosophy Public Health, Master of Health Information Management, Master of Science Public Health, Graduate Certificate Clinical Classification, Bachelor of Science Public Health (Honours), Diploma Public Health (Distinction) and Certificate Public Health.

Email: sowemusamm@hotmail.com, sowemusamm@gmail.com, musammsowe@yahoo.co.uk, Tel: +220 9933557, 6544297, 2055297.

Bah, Abdoulie

Senior Health Information Officer

Master in Statistic, Bachelor of Science Mathematics and Physics

Email: abdoulie52000@yahoo.com, Tel: (220) 9552237/2800717

Sowe, Fatou O.

Certificate in Field Epidemiology Training Programme for Frontline (FETP), Postgraduate Diploma in Public Health Promotion, Bachelor of Science Public & Environmental Health

Email: sowefatouo@yahoo.com, Tel: (220) 9886669

Jallow, Fatoumatta

Senior Health Statistician

Bachelor of Science Mathematics and Economics

Email: fajalow@gmail.com, Tel: (220) 9984353

Tamba, Sajar

Data Manager

Diploma Information Technology, Certificate Information Technology and WASSE.

Email: tamsajar@hotmail.com, Tel: (220) 6285296, 7315485

Susso, Isatou

Data Entry Clerk

Advance Diploma Information Technology, Diploma Information Technology, Diploma Graphic Design, Certificate Information Technology, ICM and WASSE.

Email: aishasusso@hotmail.com, Tel: (220) 9948242, 6948242

Citation:

Health Management Information System, (2018). Health Service Statistics Report, Ministry of Health, Banjul, The Gambia.

CONTENT

Table of Contents

CONTENT	3
POPULATION PROJECTION 2018.....	4
HUMAN RESOURCES	15
HEALTH FACILITIES	20
PRIMARY HEALTH CARE VILLAGES	21
HEALTH SERVICES UTILIZATION	22
INTEGRATED DISEASE SURVEILLANCE and RESPONSE	25
MALARIA.....	27
PREVENTION OF MATERNAL TO CHILD TRANSMISSION	31
INSTITUTIONAL DELIVERIES	33
MATERNAL HEALTH SERVICES.....	37
DIARRHOEA.....	39
MENTAL HEALTH SERVICES	41
IMNCI.....	45
EYE CONDITIONS	55
ACCIDENTS	57
ORAL and DENTAL CONDITIONS.....	61
NON- COMMUNICABLE DISEASES	63
SEXUALLY TRANSMITTED DISEASES.....	68
ANTI RETROVIRAL THERAPY / HIV	69
TUBERCULOSIS.....	75
GENDER BASED VOILENCE	81
REFERRALS	82
EXPANDED PROGRAMME ON IMMUNIZATION	90
INSPECTION	94
VILLAGE HEALTH SERVICES	95
FAMILY PLANNING SERVICES.....	103
FAMILY PLANNING METHODS.....	104
REGISTRATION OF BIRTHS and DEATHS.....	105
INSTITUTIONAL DEATHS REPORTED.....	107

List of Tables

Table 1: Population Projected for 2018

Table 2: Number of expected deliveries, 2018

Table 3: Categorized Health Worker: Population Ratios of Entire Public Sector Health Facility-based (Total) Health Workforce Stock July 2018.

Table 4: The ratios of selected (Critical) Healthcare Professionals per 10,000 Population.

Table 5: Distribution of Health Workers by Cadre and Health Region in 2018.

Table 6: Distribution of Health Workers by Service Delivery Level

Table 7: Health Worker: Population Ratios of Entire Public Sector Health Facility-based (Total) Health Workforce Stock 2018.

Table 8: Number of Hospital Reported by Region in 2018.

Table 9: Number of Public Health Centres Reported by Region in 2018.

Table 10: Number of Private Health Centre Reported by Region in 2018.

Table 11: Number of Primary Health Care Circuit and Villages Reported by Region in 2018.

Table 12: Number of Outpatient Attendance Reported by Region in 2018.

Table 13: Number of IWC New Attendance Reported by Region in 2018.

Table 14: Number of Post Natal Attendance Reported by Region in 2018.

Table 15: Number of ANC Attendance Reported by Region in 2018.

Table 16: Number of Suspected and Confirmed Cases of AFP, Anthrax and Cholera Reported by Region in 2018.

Table 17: Number of Suspected and Confirmed Cases of Diarrhoea with Blood, Human Rabies and Leprosy Reported by Region in 2018.

Table 18: Number of Suspected and Confirmed Cases of Yellow Fever, Measles and Meningitis Reported by Region in 2018.

Table 19: Number of Suspected and Confirmed Cases of Schistosomiasis, Shigellosis and Suspected VHF (incl. EVD) Reported by Region in 2018.

Table 20: Number of Suspected and Confirmed Cases of Yellow Fever, Measles and Meningitis Reported by Region in 2018.

Table 21: Number of LLIN Distributed through RCH Services by Region in 2018.

Table 22: Number of Intermittent Preventative Treatment (IPT) Doses Administered to Pregnant women through RCH Services by Region in 2018.

Table 23: Number of Suspected and Confirmed Malaria Cases Reported at Health facilities by Regions in 2018.

Table 24: Total Malaria Cases (RDT Positive and Lab Positive) Reported by Region in 2018.

Table 25: Percentage of Confirmed Malaria Cases (RDT Positive and Lab Positive) by Category Reported by Region in 2018.

Table 26: Number of Uncomplicated RDT-Confirmed Malaria Cases Reported by Region in 2018.

Table 27: Number of Uncomplicated Lab Confirmed Malaria Cases Reported by Region in 2018.

Table 28: Number of Admission due to Severe RDT-Confirmed Malaria Reported by Region in 2018.

Table 29: Number of Admission Due to Severe Lab -Confirmed Malaria Reported by Region in 2018.

Table 30: Number of Deaths due to Severe RDT-Confirmed Malaria Reported by Region in 2018.

Table 31: Number of Deaths due to Severe Lab Confirmed Malaria Reported by Region in 2018

Table 32: PMTCT HIV Positive Mothers on ART Reported by Region in 2018

Table 33: Number of HIV Positive Mothers Reported by Region in 2018.

Table 34: Number of HIV Positive Mothers Reported by Region in 2018

Table 35: Number of HIV Positive Mothers Reported by Region in 2018.

Table 36: Institutional Deliveries reported by the Regions in 2018

Table 37: Institutional Live Births Reported by the Regions in 2018.

Table 38: Institutional Still Births reported by the Regions in 2018.

Table 39: Number and Percentage of Live Births by Weight Reported by the Regions in 2018.

Table 40: Outcome of Institutional Deliveries Reported by the Regions in 2018

Table 41: Percentage Outcome of Institutional Deliveries Reported by the Regions in 2018.

Table 42: Number of Deliveries at Health Facilities and VHS Reported by Regions in 2018.

Table 43: Number of Live Births conducted at Health Facilities and VHS Reported by the Regions in 2018.

Table 44: Number of Still Births at Health Facilities and VHS Reported by the Regions in 2018.

Table 45: Number of Maternal Conditions Reported by Regions in 2018.

Table 46: Number of Maternal Conditions Reported by Regions in 2018

Table 47: Number of Maternal Conditions Reported by Regions in 2018

Table 48: Number of Maternal Conditions Reported by Regions in 2018

Table 49: Number of Diarrhoea Cases Reported by Regions in 2018

Table 50: Number of Diarrhoea With Some Dehydration Reported by Regions in 2018.

Table 51: Number of Diarrhoea With Severe Dehydration Reported by Regions in 2018.

Table 52: Number of Diarrhoea With Blood / Mucus Inpatient Cases Reported by Regions in 2018.

Table 54: Number of Anxiety Disorder and Child Mental Disorder Reported by Regions in 2018

Table 55: Number of Dementia the elderly and Depression Reported by Regions in 2018.

Table 56: Number of Drug induced psychosis and Epilepsy reported by Regions in 2018.

Table 57: Number of Mania and Organic psychosis Reported by Regions in 2018

Table 58: Number of Other Mental Disorders and Phobia reported by Regions in 2018

Table 59: Number of Pregnancy Related Mental Disorders and Schizophrenia Reported by Regions in 2018.

Table 60: Admissions Due to Anxiety Disorder and Child Mental Disorder Reported by Regions in 2018.

Table 61: Admissions Due to Dementia the Elderly and Depression Reported by Regions in 2018.

Table 62: Admissions Due to Drug Induced Psychosis and Epilepsy Reported by Regions in 2018.

Table 63: Admissions Due to Mania and Organic Psychosis Reported by Regions in 2018.

Table 64: Admissions Due to Other Mental Disorders and Phobia Reported by Regions in 2018.

Table 65: Admissions Due to Pregnancy Related Mental Disorders and Schizophrenia Reported by Regions in 2018

Table 66: Number of Acute Ear Infections reported by Regions in 2018.

Table 67: Admissions Due to Acute EAR Infections reported by Regions in 2018.

Table 68: Number of Chronic Ear Infections reported by Regions in 2018.

Table 69: Admissions Due to Chronic EAR Infections reported by Regions in 2018.

Table 70: Number of Eye Infections reported by Regions in 2018

Table 71: Admissions Due to Eye Infections reported by Regions in 2018

Table 72: Number of Low Weighth With Anaemia Reported by Regions in 2018.

Table 73: Admissions Due to Low Weight With Anaemia Reported by Regions in 2018

Table 74: Number of Moderated Acute Malnutrition Reported by Regions in 2018.

Table 75: Number of No Pneumonia: Cough or Cold Reported by Regions in 2018.

Table 76: Number of SAM Patient Treated According to the Protocol Reported by Regions in 2018.

Table 77: Admitted SAM Patients Treated According to the Protocol Reported by Regions in 2018.

Table 78: Admitted SAM Patients Treated According to the Protocol and Died Reported by Regions in 2018.

Table 79: Number of Serious Possible Bacterial Infection Reported by Regions in 2018.

Table 80: Admission Due to Serious Possible Bacterial Infection Reported by Regions in 2018.

Table 81: Deaths Due to Serious Possible Bacterial Infection Reported by Regions in 2018.

Table 82: Number of Severe Acute Malnutrition Reported by Regions in 2018

Table 83: Admission Due to Severe Acute Malnutrition Reported by Regions in 2018.

Table 84: Deaths Due to Severe Acute Malnutrition Reported by Regions in 2018

Table 85: Number of Severe Anaemia Reported by Regions in 2018

Table 86: Admission Due to Severe Anaemia Reported by Regions in 2018

Table 87: Deaths Due to Severe Anaemia Reported by Regions in 2018.

Table 88: Number of Severe Malnutrition with Anaemia Reported by Regions in 2018

Table 89: Admission Due to Severe Malnutrition with Other Medical Complications Reported by Regions in 2018.

Table 90: Deaths Due to Severe Malnutrition with Other Medical Complications Reported by Regions in 2018.

Table 91: Number of Persistent Diarrhoea Reported by Regions in 2018.

Table 92: Admission Due to Severe Persistent Diarrhoea Reported by Regions in 2018.

Table 93: Deaths Due to Severe Persistent Diarrhoea Reported by Regions in 2018

Table 94: Number of Cataracts Reported by Regions in 2018.

Table 95: Number of Conjunctivitis Reported by Regions in 2018.

Table 96: Number of Glaucoma Reported by Regions in 2018

Table 97: Number of Ophthalmia Neonatorum Reported by Regions in 2018.

Table 98: Number of Other Eye Condition Reported by Regions in 2018.

Table 99: Number of Refractive Error Reported by Regions in 2018.

Table 100: Number of Trachoma Reported by Regions in 2018.

Table 101: Number of Road Traffic Accidents Reported by Regions in 2018

Table 102: Number of Rabies Reported by Regions in 2018.

Table 103: Number of Other Injuries Reported by Regions in 2018

Table 104: Number of Other Bites Reported by Regions in 2018.

Table 105: Number of Ingestion of Harmful Substance Reported by Regions in 2018

Table 106: Number of Fracture Reported by Regions in 2018

Table 107: Number of to Fall from Height Reported by Regions in 2018

Table 108: Number of Drowned Reported by Regions in 2018

Table 109: Number of Dog Bites Reported by Regions in 2018.

Table 109: Number of Burns Reported by Regions in 2018.

Table 110: Number of Snake Bites Reported by Regions in 2018.

Table 111: Number of Toothache Reported by Regions in 2018

Table 112: Number of Oral Disorder Reported by Regions in 2018.

Table 113: Number of Oral Thrust / Ulcer Reported by Regions in 2018.

Table 114: Number of Dental Abscess Reported by Regions in 2018.

Table 115: Number of Gingivitis Reported by Regions in 2018.

Table 116: Number of Hypertension Reported by Regions in 2018

Table 117: Number of Diabetes Reported by Regions in 2018.

Table 118: Number of Asthma Reported by Regions in 2018.

Table 119: Number of Cardiac Disorder Reported by Regions in 2018

Table 120: Number of Other Non-Communicable Diseases Reported by Regions in 2018.

Table 121: Number of Breast and Cervical Cancer Reported by Regions in 2018

Table 122: Number of Lung Cancer Reported by Regions in 2018

Table 123: Number of Liver Cancer Reported by Regions in 2018.

Table 124: Number of Other Cancer Reported by Regions in 2018

Table 125: Number of Women Screened and Women Managed for Cervical Cancer Reported by Regions in 2018.

Table 126: Number of Sickle Cell Reported by Regions in 2018

Table 127: Number of Renal Failure Reported by Regions in 2018

Table 128: Number of Prostate Cancer Reported by Regions in 2018.

Table 129: Number of Vaginal Discharge Reported by Regions in 2018

Table 130: Number of Urethral Discharge Reported by Regions in 2018

Table 131: Number of Other sexually transmitted infections Reported by Regions in 2018.

Table 132: Number of Lower Abdominal Pain Reported by Regions in 2018

Table 133: Number of adults and children that initiated ART with an undetectable viral load at 12 months (<1000 copies /ml) Reported by Regions in 2018.

Table 134: Number of adults and children that on ART who had a viral load test Reported by Regions in 2018.

Table 135: Number of PLHIV Currently on ART by Sex and Age Reported by Regions in 2018

Table 136: Number of PLHIV Currently on ART by Sex and HIV Type Reported by Regions in 2018.

Table 137: Number of ART PLHIV NOT on ART who Died from AIDS Related Conditions Reported by Regions in 2018

Table 138: Number of PLHIV on ART transferred in (ie From Another ART Centre) Reported by Regions in 2018.

Table 139: Number of PLHIV on ART Transferred Out (ie To Another ART Centre) Reported by Regions in 2018.

Table 140: Number of PLHIV on ART Who Died Reported by Regions in 2018.

Table 141: Number of PLHIV Who Defaulted / Stopped on ART Reported by Regions in 2018

Table 142: Number of PLHIV who Restart ART Reported by Regions in 2018

Table 143: Number of PLHIV Who Began ART for the First Time by Gender and Age Reported by Regions in 2018

Table 144: Number of PLHIV Who Began ART for the First Time by Gender and Type Reported by Regions in 2018.

Table 145: Number of ART PLHIV Who Died from AIDS Related Conditions by Gender and Type Reported by Regions in 2018.

Table 146: Number of Clients Who Received Pre-Test and Post Test Counselling and Were Tested for HIV for HIV Reported by Regions in 2018.

Table 147: Number of Test Results by Category Reported by Regions in 2018

Table 148: Number of Out-Reach Clients Who Received Pre-Test Counseling, Tested for HIV and Post Test Counseling for HIV Reported by Regions in 2018.

Table 149: Number of Out Reach Test Results by Category Reported by Regions in 2018

Table 150: Number of All new and relapse cases of TB (bacteriologically confirmed or clinically diagnosed) Reported by Regions in 2018.

Table 151: Number of All new and relapse cases of TB (bacteriologically confirmed or clinically diagnosed) Reported by Regions in 2018.

Table 152: Number of Extrapulmonary Bacteriologically Confirmed or Clinically Diagnosed Reported by Regions in 2018.

Table 153: Number of HIV Positive TB patients and HIV Positive TB Patients on CPT Reported by Regions in 2018.

Table 154: Number of HIV Positive TB patients on ART Reported by Regions in 2018

Table 155: Number of Others Previously Treated Patient Reported by Regions in 2018.

Table 156: Number of Patients Tested for HIV Before or During TB Treatment Reported by Regions in 2018.

Table 157: Number of Patients with Presumptive TB Undergoing Bacteriological Examination Reported by Regions in 2018.

Table 158: Number of Patients with Presumptive TB with Positive Bacteriological Examination Result Reported by Regions in 2018.

Table 159: Number of Pulmonary Bacteriologically Confirmed New Cases Reported by Regions in 2018.

Table 160: Number of Pulmonary Bacteriologically Confirmed Previously Treated After Default Reported by Regions in 2018.

Table 161: Number of Pulmonary Bacteriologically Confirmed Previously Treated After Failure Reported by Regions in 2018.

Table 162: Number of Pulmonary Bacteriologically Confirmed Previously Treated Relapse Reported by Regions in 2018.

Table 163: Number of Pulmonary Clinically Diagnosed Reported by Regions in 2018

Table 164: Number of Assault Cases Reported by Regions in 2018.

Table 165: Number of Child Abuse Cases Reported by Regions in 2018.

Table 166: Number of Rape Cases Reported by Regions in 2018.

Table 167: Number of Referrals Due to Severe Malaria Reported by Regions in 2018.

Table 168: Number of Referrals Due to Anaemia Reported by Regions in 2018.

Table 169: Number of Referrals Due to Diarrhoea with Blood Reported by Regions in 2018.

Table 170: Number of Referrals Due to Severe Persistent Diarrhoea Reported by Regions in 2018.

Table 171: Number of Referrals Due to Differentially able Reported by Regions in 2018

Table 172: Number of Referrals Due to Severe Malnutrition Reported by Regions in 2018

Table 173: Number of Referrals Due to Severe Malnutrition with Anaemia Reported by Regions in 2018.

Table 174: Number of Referrals Due to Severe Pneumonia Reported by Regions in 2018.

Table 175: Number of Referrals Due to Skin Disorder Reported by Regions in 2018.

Table 176: Number of Referrals Due to Hypertension and Renal Failures Reported by Regions in 2018.

Table 177: Number of Referrals Due to Asthma, Cancer, Cardiac Disorder and Diabetes Reported by Regions in 2018.

Table 178: Number of Referrals Due to Bites and Drowned Reported by Regions in 2018.

Table 179: Number of Referrals Due to Fracture and fall from Height Reported by Regions in 2018.

Table 180: Number of Referrals Due to Maternal Complications Reported by Regions in 2018.

Table 181: Number of Referrals Due to Obstetric and Deliveries Complications Reported by Regions in 2018.

Table 182: Number of Referrals Due to Ingestion of Harmful Substance Reported by Regions in 2018.

Table 183: Number of Referrals Due to Liver / Hepatic Disorder Reported by Regions in 2018.

Table 184: Number of Referrals Due to Moderate Malnutrition + anaemia Reported by Regions in 2018.

Table 185: Number of Referrals Due to Other Injuries Reported by Regions in 2018.

Table 186: Number of Referrals Due to Suspected TB Reported by Regions in 2018.

Table 187: Number of Referrals Due to Cancers Reported by Regions in 2018.

Table 188: Number of Referrals of Neonates with Complication Reported by Regions in 2018

Table 189: Number of Referrals Due to Other NCD Reported by Regions in 2018.

Table 190: Number of Referrals Due to Burns Reported by Regions in 2018

Table 191: Number of BCG, Polio 0 and Hepatitis B Administered by Regions in 2018.

Table 192: Number of PENTA's administered by Regions in 2018.

Table 193: Number of Pneumococcal administered by Regions in 2018.

Table 194: Number of Polio's administered by Regions in 2018

Table 195: Number of Measles-Rubella's and Polio 4 Plus Administered by Regions in 2018.

Table 196: Number of DPT Booster and Mebendazole 500 mg Administered by Regions in 2018.

Table 197: Number of Rota's administered by Regions in 2018.

Table 198: Number of IVP and TT's administered by Regions in 2018

Table 199: Number of Vitamin A Doses (Prevention) Administered by Regions in 2018.

Table 200: Number of Vitamin A Doses (Treatment) and Yellow Fever Administered by Regions in 2018.

Table 201: Number of Inspection conducted by Regions in 2018.

Table 202: Number of Deliveries by the CBC Reported by Regions in 2018.

Table 203: Number of Family Planning Services by the CBC Reported by Regions in 2018.

Table 204: Number of Deaths by the CBC Reported by Regions in 2018

Table 205: Number of Neonatal conjunctivitis Reported by Regions in 2018.

Table 206: Number of CBC Postnatal Visits and Referrals Reported by Regions in 2018.

Table 207: Number of VHW Uncomplicated Malaria Confirmed with RDT Reported by Regions in 2018.

Table 208: Number of VHW Suspected Measles Reported by Regions in 2018

Table 209: Number of VHW Pneumonia Reported by Regions in 2018

Table 210: Number of VHW Fast Breathing Reported by Regions in 2018

Table 211: Number of VHW Diarrhoea Reported by Regions in 2018.

Table 212: Number of VHW Presumptive TB Cases Reported by Regions in 2018.

Table 213: Number of VHS Deaths Reported by Regions in 2018.

Table 214: Number of VHS Referrals Reported by Regions in 2018.

Table 215: Number of VHW RDT Use Positive Reported by Regions in 2018.

Table 216: Number of VHW RDT Use Negative Reported by Regions in 2018.

Table 217: Number of VHW RDT Use Invalid Reported by Regions in 2018.

Table 218: Number of VHW Coartem 6 Tab Doses Reported by Regions in 2018.

Table 219: Number of VHW Coartem Reported by Regions in 2018.

Table 220: Number of CHN Activities Reported by Regions in 2018

Table 221: Number of Malnutrition Patients Reported by Regions in 2018.

Table 222: Number of CHN Activities Reported by Regions in 2018.

Table 223: Number of People Seen and Counselling for Family Planning Services Reported by Regions in 2018.

Table 224: Number of Family Planning New Acceptors and Current Users Reported by Regions in 2018.

Table 225: Number of CBC Referrals Reported by Regions in 2018

Table 226: Number of Foam, IUCD, Implanon, Jadelle Implant and Male Condom Methods Reported by Regions in 2018.

Table 227: Number of Pill Methods Reported by Regions in 2018.

Table 228: Number of Clients and Condoms Issued through the VHS Reported by Regions in 2018.

Table 229: Number of Early Registration Of Births Reported by Regions in 2018.

Table 230: Number of Late Registration of Births Reported by Regions in 2018.

Table 231: Number of Foetus and Neonatal Deaths Registration Reported by Regions in 2018.

Table 232: Number of Child Deaths Registration Reported by Regions in 2018.

Table 233: Number of Deaths More than Five Years Old Reported by Regions in 2018.

Table 234: Brought In Deaths reported by Regions in 2018

Table 235: Deaths On Arrival reported by Regions in 2018.

Table 236: Deaths at the Health Facilities Reported by Regions in 2018.

Table 237: Child and Adult Deaths at the Health Facilities Reported by Regions in 2018.

List of figures

Figure 1: Distribution of Health workers by cadre by region

Figure 2: Distribution of Midwives by Service Delivery Level

Figure 3: Percentage of PHC Circuits by Region in 2018.

Figure 4: Percentage of PHC Villages by Region in 2018.

Figure 5: Percentage of OPD Visits by Age Category Reported in 2018.

Figure 6: Percentage of < 5 Years OPD New Visits by Gender Reported in 2018

Figure 7: Proportion of OPD Attendance by Region Reported in 2018.

SUMMARY TABLE

Summary Indicator values for 2018

No	Indicators	Value
1	Ratio of Medical Doctors (General & Specialists) per 10,000 Population	1.3
2	Ratio of Midwives per 10,000 Population	1.7
3	Ratio of Nurses per 10,000 Population	3.6
4	Ratio of Public Health Professionals (General & Specialists) per 10,000 Population	1.6
5	Ratio of Pharmacy Professionals per 10,000 Population	0.1
6	Ratio of Lab Professionals per 10,000 Population	0.2
7	Ratio of Radiology / Imaging Professionals per 10,000 Population	0.1
8	Utilization of OPD Services per 10,000 Population	7301
9	Percentage of Institutional Live Births	96.0 %
10	Percentage of Institutional Skilled Deliveries.	89.0 %
11	Percentage of Institutional Live Births More than 2.5 kg.	88.4 %
12	Percentage of Institutional Deliveries through Caesarean Sections.	3.9 %

POPULATION PROJECTION 2018

Table 1: Population Projected for 2018

	Pop. < 1	Pop.1- 5 Years	Pregnant Women	Women 15-49 years old	General Population
CRR	7,153	38,724	10,417	65,101	246,650
LRR	2,495	13,506	3,735	23,775	86,023
NBER	3,585	19,409	4,261	32,212	123,624
NBWR	7,821	19,494	5,204	32,353	124,164
URR	7,821	42,344	11,237	69,593	269,704
WHR1	25,674	138,991	35,945	219,313	885,293
WHR2	13,368	72,370	17,565	102,494	460,953
National	67,917	344,837	88,364	544,841	2,196,412

Table 2: Number of expected deliveries, 2018

Region	Expected Deliveries
Central River	10765
Lower River	3931
North Bank East	5326
North Bank West	5350
Upper River	11508
Western 1	36264
Western 2	16948
National	90092

HUMAN RESOURCES

Table 3: Categorized Health Worker: Population Ratios of Entire Public Sector Health Facility-based (Total) Health Workforce Stock July 2018.

Health Worker Category	Number of Health Workers	Ratio of Cadre per 10,000
Medical Officers (General)	167	0.829040555
Specialist Doctors	85	0.416973059
Paramedical / Allied Health Professionals	35	0.171694789
Nursing & Midwifery	1127	6.068337
Imaging Professionals (Radiologists / Sonographers)	29	0.142261397
Pharmacists & Other Pharmacy Cadre	60	0.294333924
Lab Professionals & other Lab Cadre	150	0.735834812
Public Health Officers (General)	285	1.398086142
Public Health Specialists	31	0.152072528
Support staff	3101	15.21215834
Community Health Workers	1552	7.613437521
Overall Total Skilled Health Workers	2711	13.29898783
Overall Total Unskilled Health Workers	3882	19.04340493
Grant Total Skilled +Unskilled	6593	32.34239277

Source: HRH Assessment, 2018

Table 4: The ratios of selected (Critical) Healthcare Professionals per 10,000 Population.

Selected (Critical) Public Sector Healthcare Worker Cadres	Ratio of cadre per 10,000
Medical Doctors (General & Specialists)	1.3
Nurses	3.6
Midwives	1.7
Anaesthetic Officers	0.1
Lab Professionals	0.2
Radiology / Imaging Professionals	0.1
Pharmacy Professionals	0.1
Public Health Professionals (General & Specialists)	1.6
Clinical Officers (Assistant Medical Officers)	0.0
Nutritionists	0.0
Overall Ratio of Selected Health Workers to Population	8.7

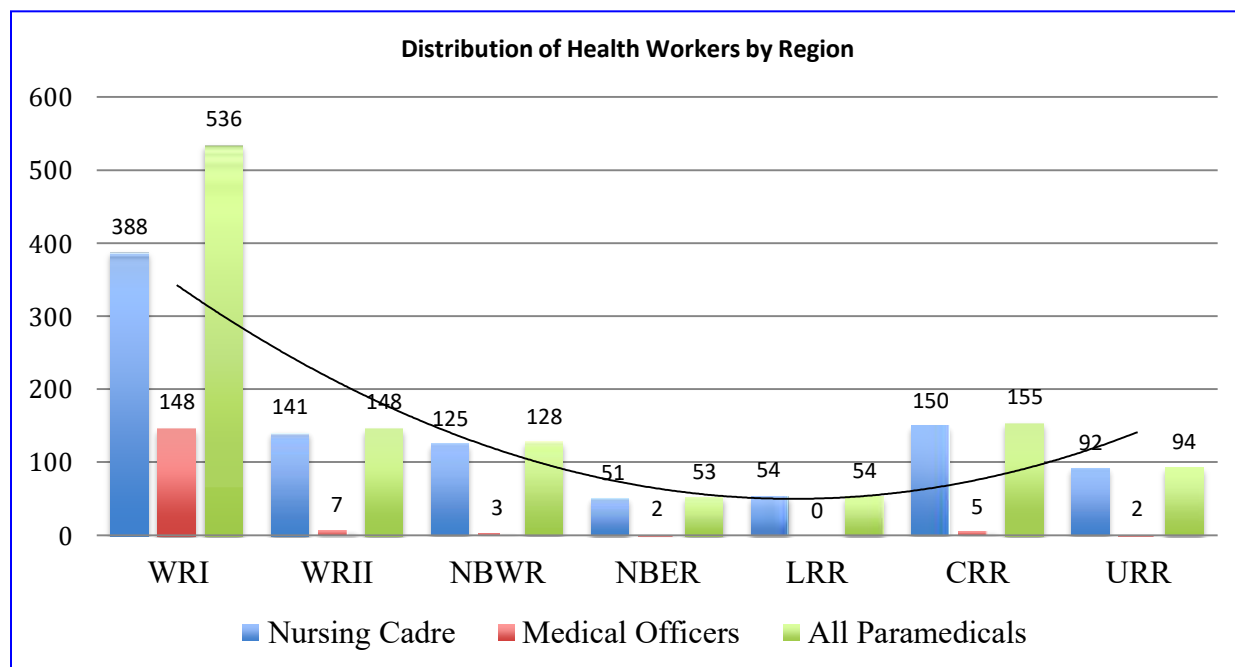
Source: HRH Assessment, 2018

Table 5: Distribution of Health Workers by Cadre and Health Region in 2018.

Cadre	Number of Health Workers per Region							Total
	WHR1	WHR 2	NBWR	NBER	LRR	CRR	URR	
Medical Officers	148	7	3	2	0	5	2	167
Specialist Doctors	44	0	0	0	0	2	2	48
Para medical Cadre	19	3	0	8	2	3	0	35
Nursing Cadre	388	141	125	51	54	150	92	1001
Anesthetic Cadre	6	0	0	0	0	0	0	6
Imaging	24	0	0	3	0	3	0	30
Pharmacy Cadre	24	12	12	3	2	5	1	59
Laboratory Cadre	91	17	4	17	4	11	10	154
Public Health Cadre	90	51	17	23	33	39	24	275
Public Health Specialists*	25	0	0	0	0	0	0	25
Grand Total All Cadres	859	231	161	107	91	218	131	1794

Source: HRH Assessment, 2018 *Public Health Professionals with Specialist Training.

Figure 1: Distribution of Health workers by cadre by region.



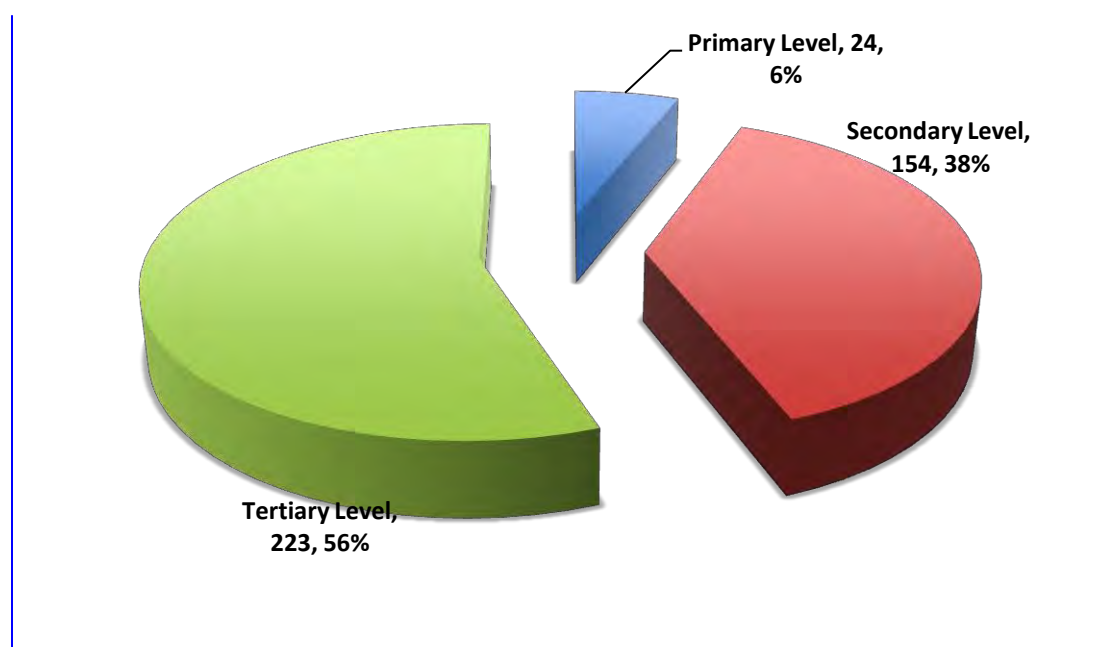
Source: HRH Assessment, 2018

Table 6: Distribution of Health Workers by Service Delivery Level.

Cadre	Number of Health Workers by Service Delivery Level		
	Primary	Secondary	Tertiary
Medical Officers	0	8	167
Specialist Doctors	0	0	46
Paramedical / Allied health professionals	0	0	37
Nursing cadre	67	580	522
Anesthetic Cadre	0	0	15
Imaging Cadre	0	2	35
Pharmacy	0	26	38
Lab Cadres	0	66	89
Public Health Cadres	0	236	58
Public Health Specialists	0	10	15
Community Health Workers	1,551	0	1
Support Staff	84	969	1791
Grand Total (By Level)	1,635	1,317	2,307

Source: HRH Assessment, 2018

Figure 2: Distribution of Midwives by Service Delivery Level.



Source: HRH Assessment, 2018

Table 7: Health Worker: Population Ratios of Entire Public Sector Health Facility-based (Total) Health Workforce Stock 2018.

No.	Health Worker Cadres: Public Health Facilities	Number of Health Workers	Ratio of cadre per 10,000
1	Medical Officers (General Doctors)	169	0.829040555
2	Physicians	11	0.05396122
3	Surgeons	15	0.073583481
4	Gynaecologist-Obstetricians	23	0.112828004
5	Paediatricians	15	0.073583481
6	Orthopaedic Surgeons	0	0
7	Consultant medicine	8	0.039244523
8	Consultant neonatologist	1	0.004905565
9	Consultant Orthopaedic	4	0.019622262
10	ENT Surgeons	0	0
11	Dental Surgeons	3	0.014716696
12	Dental Technician	3	0.014716696
13	Dental Assistant	7	0.034338958
14	Dental Officer	1	0.004905565
15	Clinical Officers	0	0
16	Nurses	733	3.595779448
17	Midwives	338	1.65808111
18	Anesthesiologists (Drs)	4	0.019622262
19	Anaesthetic Officers	19	0.093205743
20	Radiologists (Drs)	0	0
21	Radiographers	7	0.034338958
22	Radiology Tech	4	0.019622262
23	Radiology Assist.	18	0.088300177
24	Pharmacists	3	0.014716696
25	Pharmacy Technician	10	0.049055654
26	Pharmacy Assistant	47	0.230561574
27	Pathologists	0	0
28	Lab Scientist / Technologist	13	0.06377235
29	Lab Technicians	29	0.142261397
30	Lab Assistants	108	0.529801065
31	Public Health Specialists (MPH)	0	0
32	Public Health & Environment Officer	175	0.858473947
33	Nutritionists	0	0
34	Orthopaedic Officers	0	0
35	Physiotherapists	1	0.004905565
36	Physiotherapy Technician	4	0.019622262
37	Physiotherapist Assistant	19	0.093205743
38	Health Economists	3	0.014716696
No.	Health Worker Cadres: Public Health Facilities	Number of Health Workers	Ratio of cadre per 10,000
39	Ophthalmic Nurses	21	0.103016874

40	Leprosy and TB Inspectors	34	0.166789224
41	Community Ophthalmic Nurse	10	0.049055654
42	Principal Ophthalmic Nurse	20	0.098111308
43	Health Planners	5	0.024527827
44	Med. Ophthalmologist	1	0.004905565
45	Ophthalmic Medical Assistant	18	0.088300177
46	Matron	6	0.029433392
47	Optometrist	3	0.014716696
48	Optometry Technician	4	0.019622262
49	Ophthalmic Optician	0	0
50	Optical Asst.	0	0
51	M&E Specialists / Biostatisticians	4	0.019622262
52	IT Specialists	7	0.034338958
53	Epidemiologists	0	0
54	Policy Analysts / Specialist	0	0
55	Biomedical Engineers	0	0
56	Biomedical Technicians	4	0.019622262
57	Procurement Officers	8	0.039244523
58	Subtotal Health Professionals	1940	9.516796901
59	Support Staff SKILLED	771	3.782190933
60	Support Staff UNSKILLED	2330	11.42996741
61	Community Health Worker (CHW)	849	4.164825036
62	Community Birth Companion (CBC)	703	3.448612485
63	Overall Total Skilled Health Workers	2711	13.29898783
64	Overall Total Unskilled Health Workers	3882	19.04340493
65	Grant Total Skilled +Unskilled	6593	32.34239277

Source: HRH Assessment, 2018

HEALTH FACILITIES

Table 8: Number of Hospital Reported by Region in 2018.

	Teaching	Specialized	General	District	Private
Central River	0	0	1	0	0
Lower River	0	0	0	1	0
North Bank East	0	0	1	0	0
North Bank West	0	0	0	1	0
Upper River	0	0	0	1	0
Western 1	1	1	2	0	1
Western 2	0	0	1	1	0
National	1	1	5	4	1

Source: HMIS, 2018

Table 9: Number of Public Health Centres Reported by Region in 2018.

	Major	Minor	RCH Clinic	Village OPD / Community
Central River	1	6	1	11
Lower River	1	6	0	9
North Bank East	0	6	1	4
North Bank West	0	5	0	5
Upper River	1	8	0	11
Western 1	1	10	0	3
Western 2	1	4	1	25
National	5	45	3	68

Source: HMIS, 2018

Table 10: Number of Private Health Centre Reported by Region in 2018.

	Private	NGO	Service Clinic
Central River	0	2	1
Lower River	0	1	1
North Bank East	0	0	1
North Bank West	1	1	0
Upper River	2	0	0
Western 1	10	3	7
Western 2	0	11	0
National	13	18	10

Source: HMIS, 2018

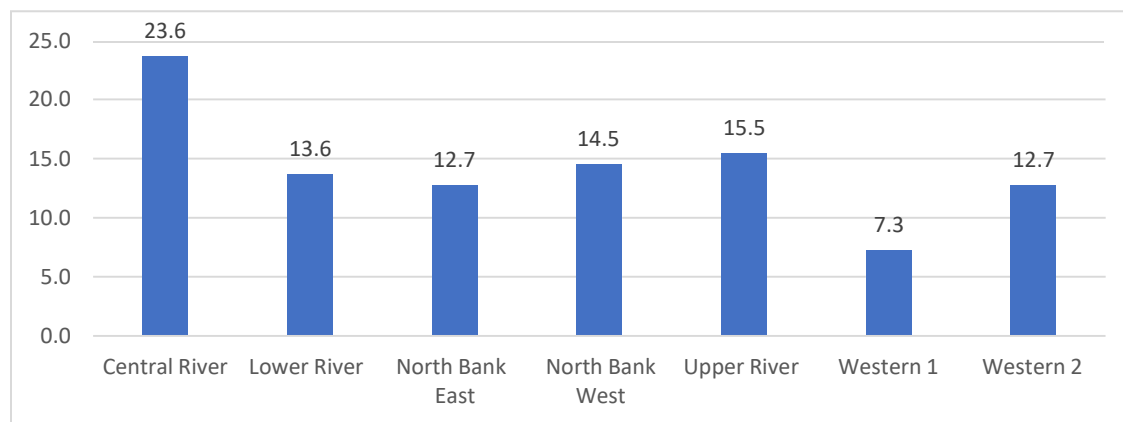
PRIMARY HEALTH CARE VILLAGES

Table 11: Number of Primary Health Care Circuit and Villages Reported by Region in 2018.

	PHC Circuit	PHC Villages
Central River	26	278
Lower River	15	115
North Bank East	14	127
North Bank West	16	116
Upper River	17	110
Western 1	8	29
Western 2	14	116
National	110	891

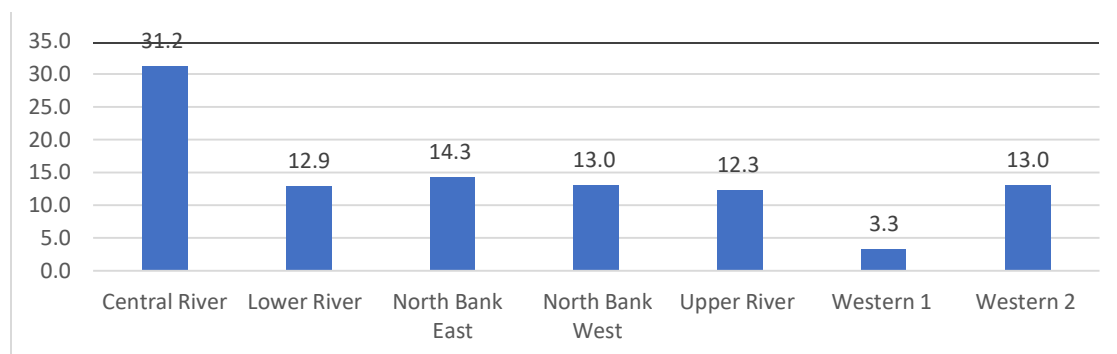
Source: HMIS, 2018

Figure 3: Percentage of PHC Circuits by Region in 2018.



Source: HMIS, 2018

Figure 4: Percentage of PHC Villages by Region in 2018.



Source: HMIS, 2018

HEALTH SERVICES UTILIZATION

Table 12: Number of Outpatient Attendance Reported by Region in 2018.

Regions	< 5 years new visit Male	< 5 years new visit Female	< 5 years re-visit Male	< 5 years re-visit Female	5-14 years Male	5-14 years Female	> 14 years Male	> 14 years Female
CRR	42250	39503	475	427	16272	18380	39417	88288
LRR	18878	17169	258	252	10256	11050	20659	42645
NBER	23784	21175	1184	1891	9331	10337	19936	41114
NBWR	12851	12461	661	651	6725	7104	13401	28519
URR	32795	30878	268	330	24408	26225	42037	72420
WHR1	53319	53130	3575	3564	50829	59768	125412	184964
WHR2	35321	35377	226	364	29210	33107	58904	84056
National	219198	209693	6647	7479	147031	165971	319766	542006

Source: HMIS, 2018

Table 13: Number of IWC New Attendance Reported by Region in 2018.

Regions	< 1 Month Male	< 1 Month Female
CRR	4113	4220
LRR	1246	1227
NBER	1149	1266
NBWR	2309	2439
URR	4713	4617
WHR1	10762	12153
WHR2	4097	4043
National	28389	29965

Source: HMIS, 2018

Table 14: Number of Post Natal Attendance Reported by Region in 2018.

Regions	Post Natal Attendance	Completing 3 Post Natal Care Services
CRR	12193	5897
LRR	2428	1444
NBER	4834	3621
NBWR	4430	3261
URR	8487	5672
WHR1	17706	5290
WHR2	1852	878
National	51930	26063

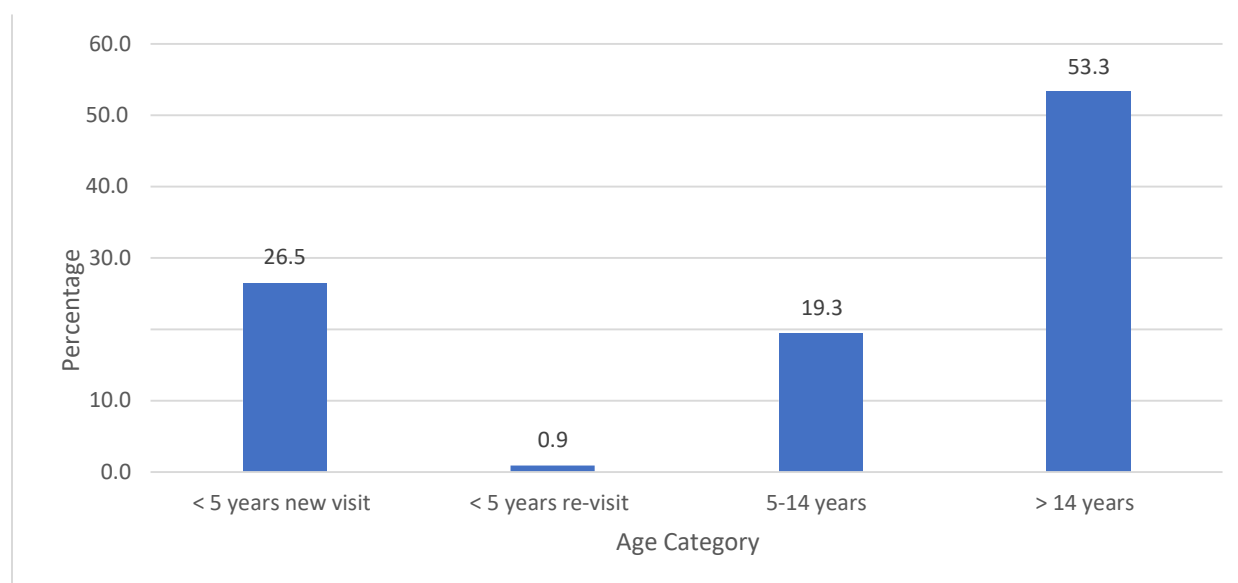
Source: HMIS, 2018

Table 15: Number of ANC Attendance Reported by Region in 2018.

Region	First Trimester Visit	Completing 3 Other Scheduled Visits	Received Iron Supplementation	First Attendance < 20 years	First Attendance 20 years of age and over
CRR	4019	1516	40570	2497	9034
LRR	1540	360	11286	791	3325
NBER	2567	1738	16270	1037	4715
NBWR	3014	1815	17413	1081	4539
URR	6087	1914	35384	2337	9183
WHR1	7649	27338	96756	4161	24152
WHR2	1354	10597	18513	1495	11342
National	26230	45278	236192	13399	66290

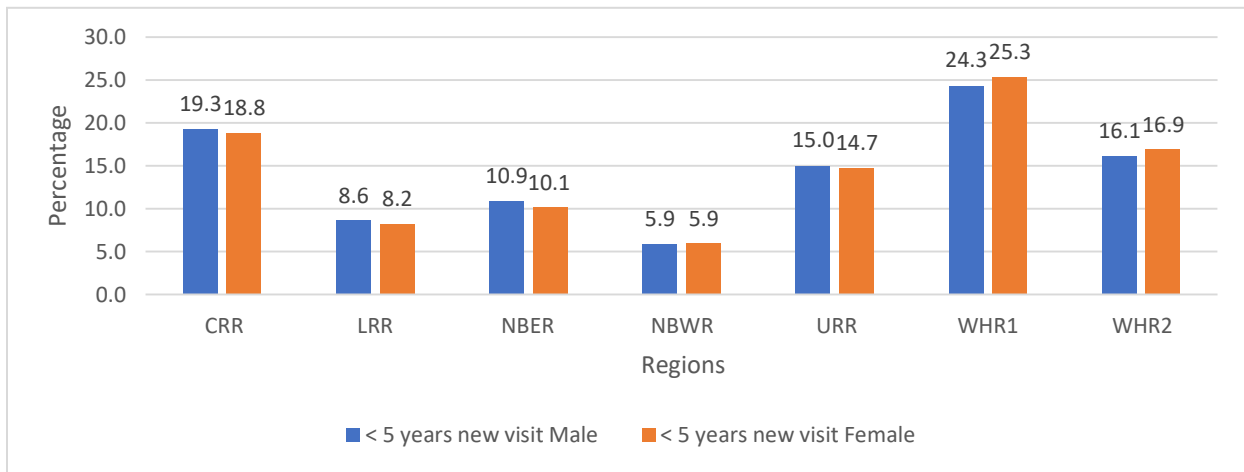
Source: HMIS, 2018

Figure 5: Percentage of OPD Visits by Age Category Reported in 2018.



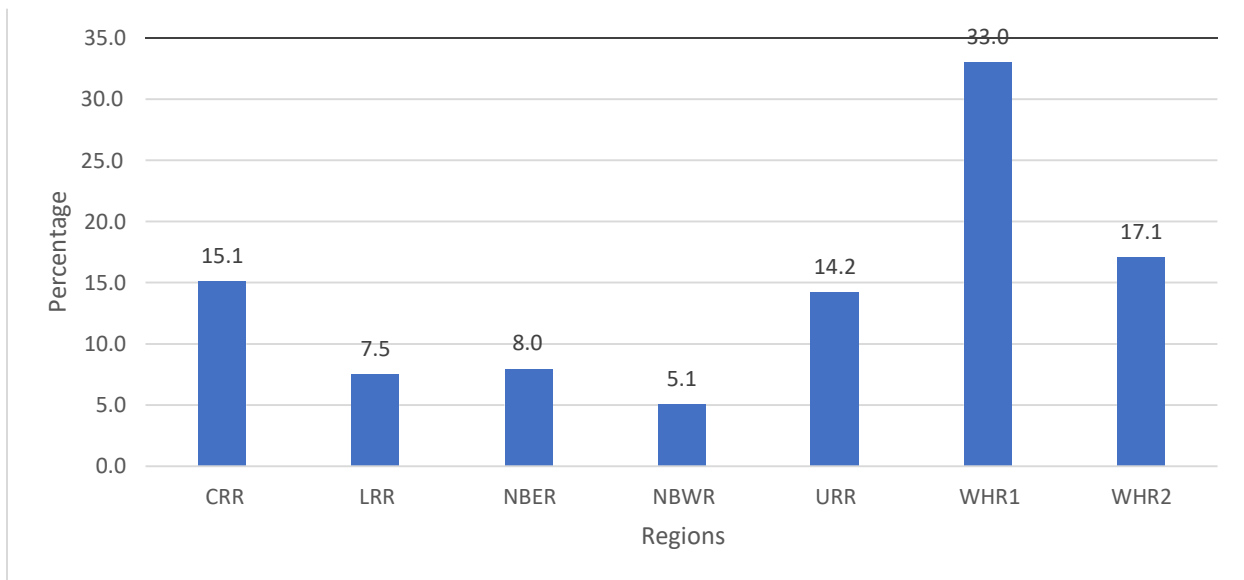
Source: HMIS, 2018

Figure 6: Percentage of < 5 Years OPD New Visits by Gender Reported in 2018.



Source: HMIS, 2018

Figure 7: Proportion of OPD Attendance by Region Reported in 2018.



Source: HMIS, 2018

INTEGRATED DISEASE SURVEILLANCE and RESPONSE

Table 16: Number of Suspected and Confirmed Cases of AFP, Anthrax and Cholera Reported by Region in 2018.

	Suspected Acute Flaccid Paralysis	Acute Flaccid Paralysis Confirmed Cases	Suspected Anthrax	Anthrax Confirmed Cases	Suspected Cholera	Cholera Confirmed Cases
Central River	5	0	0	0	0	0
Lower River	6	0	0	0	0	0
North Bank East	3	0	0	0	0	0
North Bank West	3	0	0	0	0	0
Upper River	4	0	0	0	0	0
Western 1	5	0	0	0	0	0
Western 2	5	0	0	0	0	0
National	31	0	0	0	0	0

Source: HMIS, 2018

Table 17: Number of Suspected and Confirmed Cases of Diarrhoea with Blood, Human Rabies and Leprosy Reported by Region in 2018.

	Suspected Diarrhea with Blood	Diarrhea with Blood Confirmed Cases	Suspected Human Rabies	Human Rabies Confirmed Cases	Suspected Leprosy	Leprosy Confirmed Cases
Central River	968	0	0	0	0	0
Lower River	407	0	0	0	0	0
North Bank East	507	0	0	0	0	0
North Bank West	300	1	0	0	0	0
Upper River	596	0	0	0	0	0
Western 1	156	0	0	0	0	0
Western 2	272	0	0	0	0	0
National	3206	1	0	0	0	0

Source: HMIS, 2018

Table 18: Number of Suspected and Confirmed Cases of Yellow Fever, Measles and Meningitis Reported by Region in 2018.

	Suspected Yellow Fever	Yellow Fever Confirmed Cases	Suspected Measles	Measles Confirmed Cases	Suspected Meningitis	Meningitis Confirmed Cases
Central River	0	0	1	0	0	0
Lower River	1	0	17	0	1	0
North Bank East	5	0	7	0	1	0
North Bank West	2	0	2	0	0	0

West						
Upper River	1	0	20	0	1	0
Western 1	0	0	8	0	13	0
Western 2	2	0	4	0	3	0
National	11	0	59	0	19	0

Source: HMIS, 2018

Table 19: Number of Suspected and Confirmed Cases of Schistosomiasis, Shigellosis and Suspected VHF (incl. EVD) Reported by Region in 2018.

	Suspected Schistosomiasis	Schistosomiasis Confirmed Cases	Suspected Shigellosis	Shigellosis Confirmed Cases	Suspected VHF (incl. EVD)	VHF (incl. EVD) confirmed cases
Central River	314	211	0	0	0	0
Lower River	10	1	0	0	0	0
North Bank East	6	0	0	0	0	0
North Bank West	2	0	0	0	0	0
Upper River	193	0	0	0	0	0
Western 1	16	0	0	0	0	0
Western 2	9	0	0	0	0	0
National	550	212	0	0	0	0

Source: HMIS, 2018

Table 20: Number of Suspected and Confirmed Cases of Yellow Fever, Measles and Meningitis Reported by Region in 2018.

	Suspected Neonatal Tetanus	Neonatal Confirmed Cases	Suspected Lymphatic Filariasis	Lymphatic filariasis confirmed cases
Central River	0	0	0	0
Lower River	0	0	0	0
North Bank East	0	0	0	0
North Bank West	2	0	0	0
Upper River	0	0	0	0
Western 1	2	0	0	0
Western 2	0	0	0	0
National	4	0	0	0

Source: HMIS, 2018

MALARIA

Malaria Prevention

Table 21: Number of LLIN Distributed through RCH Services by Region in 2018.

Regions	LLIN Issued to < 5 years	LLIN Issued to Pregnant Women	Total LLIN Distributed
Central River	5709	5652	11361
Lower River	2855	2685	5540
North Bank East	4000	3124	7124
North Bank West	3204	2622	5826
Upper River	3965	3748	7713
Western 1	10528	7362	17890
Western 2	1703	1096	2799
National	31964	26289	58253

Source: HMIS, 2018

Table 22: Number of Intermittent Preventative Treatment (IPT) Doses Administered to Pregnant women through RCH Services by Region in 2018.

	IPT 1st Dose	IPT 2nd Dose	IPT 3rd Dose	IPT 4th Dose
Central River	10767	9291	6268	2620
Lower River	3061	2574	1735	975
North Bank East	5052	4604	3523	1921
North Bank West	4245	4117	3044	1509
Upper River	10199	9065	5644	2233
Western 1	23167	21513	16302	9100
Western 2	10603	9464	7249	3523
National	67094	60628	43765	21881

Source: HMIS, 2018

Table 23: Number of Suspected and Confirmed Malaria Cases Reported at Health facilities by Regions in 2018.

	Suspected Malaria Cases	RDT Positive	Lab Positive	RDT Negative	RDT Invalid
Central River	66862	9219	2570	56676	31
Lower River	34827	3599	415	30464	93
North Bank East	31721	1007	1	31650	110
North Bank West	6588	591	11	8492	246
Upper River	121336	34096	1410	87442	622
Western 1	213587	12174	7334	168866	2715
Western 2	104834	14097	4254	80871	276
National	579755	74783	15995	464461	4093

Source: HMIS, 2018

In 2018, ninety-five thousand, two hundred and fifty-two (95252) confirmed malaria cases were reported by the health facilities and village health services. VHW RDT positive accounts for 4.5% of positive cases, Uncomplicated RDT-Confirmed Malaria 77.0%, Severe RDT-Confirmed Malaria 1.7%, Uncomplicated Lab Confirmed Malaria 16.0% and Severe Lab -Confirmed Malaria 0.8%.

Table 24: Total Malaria Cases (RDT Positive and Lab Positive) Reported by Region in 2018.

	Male < 5 years	Male > 5 years	Female < 5 years	Female > 5 years	Malaria in Pregnancy
VHW RDT Use Positive	368	1925	348	1653	4294
Uncomplicated RDT-Confirmed Malaria	4243	33175	3843	31320	784
Uncomplicated Lab Confirmed Malaria	1583	5869	1389	6215	147
Severe RDT-Confirmed Malaria	188	516	203	593	98
Severe Lab -Confirmed Malaria	125	280	99	267	21
Total Confirmed Malaria Cases	6507	41765	5882	40048	1050

Source: HMIS, 2018

Table 25: Percentage of Confirmed Malaria Cases (RDT Positive and Lab Positive) by Category Reported by Region in 2018.

	Male < 5 years	Male > 5 years	Female < 5 years	Female > 5 years	Malaria in Pregnancy
VHW RDT Use Positive	0.4	2.0	0.4	1.7	0.0
Uncomplicated RDT-Confirmed Malaria	4.5	34.8	4.0	32.9	0.8
Uncomplicated Lab Confirmed Malaria	1.7	6.2	1.5	6.5	0.2
Severe RDT-Confirmed Malaria	0.2	0.5	0.2	0.6	0.1
Severe Lab -Confirmed Malaria	0.1	0.3	0.1	0.3	0.0
Percentage of conformed Malaria	6.8	43.8	6.2	42.0	1.1

Source: HMIS, 2018

Table 26: Number of Uncomplicated RDT-Confirmed Malaria Cases Reported by Region in 2018.

	Male < 5 years	Male > 5 years	Female < 5 years	Female > 5 years	Malaria in Pregnancy
Central River	422	3703	397	3821	125
Lower River	176	1700	156	1430	31
North Bank East	47	514	41	342	6
North Bank West	38	255	33	207	2
Upper River	1528	15072	1357	15300	431
Western 1	808	5601	767	4641	106
Western 2	1224	6330	1092	5579	83
National	4243	33175	3843	31320	784

Source: HMIS, 2018

Table 27: Number of Uncomplicated Lab Confirmed Malaria Cases Reported by Region in 2018.

	Male < 5 years	Male > 5 years	Female < 5 years	Female > 5 years	Malaria in Pregnancy
Central River	454	675	360	987	15
Lower River	31	182	14	161	11
North Bank East	0	0	0	0	0
North Bank West	1	1	1	1	0
Upper River	100	639	67	577	14
Western 1	599	2847	551	2860	82
Western 2	398	1525	396	1629	25
National	1583	5869	1389	6215	147

Source: HMIS, 2018

Table 28: Number of Admission due to Severe RDT-Confirmed Malaria Reported by Region in 2018.

	Male < 5 years	Male > 5 years	Female < 5 years	Female > 5 years	Malaria in Pregnancy
Central River	57	102	56	91	63
Lower River	2	14	13	19	0
North Bank East	4	13	8	12	4
North Bank West	3	3	2	1	0
Upper River	85	329	91	411	28
Western 1	9	12	8	11	1
Western 2	28	43	25	48	2
National	188	516	203	593	98

Source: HMIS, 2018

Table 29: Number of Admission Due to Severe Lab -Confirmed Malaria Reported by Region in 2018.

	Male < 5 years	Male > 5 years	Female < 5 years	Female > 5 years	Malaria in Pregnancy
Central River	31	9	21	9	9
Lower River	1	7	0	8	0
North Bank East	0	0	0	1	0
North Bank West	1	6	0	0	0
Upper River	0	5	2	6	0
Western 1	53	155	39	141	7
Western 2	39	98	37	102	5
National	125	280	99	267	21

Source: HMIS, 2018

Table 30: Number of Deaths due to Severe RDT-Confirmed Malaria Reported by Region in 2018.

	Male < 5 years	Male > 5 years	Female < 5 years	Female > 5 years	Malaria in Pregnancy
Central River	2	8	5	9	0
Lower River	0	1	1	2	0
North Bank East	1	1	0	0	0
North Bank West	0	0	0	0	0
Upper River	2	7	1	6	0
Western 1	0	1	0	0	0
Western 2	2	4	1	6	0

National	7	22	8	23	0
-----------------	----------	-----------	----------	-----------	----------

Source: HMIS, 2018

Table 31: Number of Deaths due to Severe Lab Confirmed Malaria Reported by Region in 2018.

	Male < 5 years	Male > 5 years	Female < 5 years	Female > 5 years	Malaria in Pregnancy
Central River	0	0	0	2	0
Lower River	0	1	0	2	0
North Bank East	0	0	0	0	0
North Bank West	0	0	0	0	0
Upper River	0	0	0	0	0
Western 1	0	1	0	0	0
Western 2	1	4	0	6	0
National	1	6	0	10	0

Source: HMIS, 2018

PREVENTION OF MATERNAL TO CHILD TRANSMISSION

Table 32: PMTCT HIV Positive Mothers on ART Reported by Region in 2018.

Regions	Currently on ART by HIV Type (Subsequent Visits)	Currently on ART by Age (Subsequent Visits)	On ART Transferred Out To (Another ART Centre)
Central River	609	598	5
Lower River	297	324	1
North Bank East	148	148	3

North Bank West	296	296	7
Upper River	298	300	1
Western 1	2981	2980	21
Western 2	2293	2288	7
National	6922	6934	45

Source: HMIS, 2018

Table 33: Number of HIV Positive Mothers Reported by Region in 2018.

	On ART Transferred in (From Another ART Centre)	On ART Who Died	Who Began ART For The First Time This Month (HIV Type)
Central River	2	1	61
Lower River	1	0	31
North Bank East	0	1	18
North Bank West	0	0	31
Upper River	0	0	38
Western 1	3	4	310
Western 2	2	2	141
National	8	8	630

Source: HMIS, 2018

Table 34: Number of HIV Positive Mothers Reported by Region in 2018.

	Who Began ART For The First Time This Month (Age)	Who Defaulted / Stopped on ART	Who Died From AIDS Related Conditions This Month (HIV type)
Central River	61	45	1
Lower River	31	12	0
North Bank East	18	21	1
North Bank West	31	35	0
Upper River	38	70	0
Western 1	310	331	0
Western 2	141	239	1
National	630	753	3

Source: HMIS, 2018

Table 35: Number of HIV Positive Mothers Reported by Region in 2018.

	Who Restarted ART	That are on ART Who had a Viral Load Test	That Initiated ART With an Undetectable Viral Load At 12 Months (<1000 copies/ml)
Central River	18	0	0
Lower River	10	6	2
North Bank East	14	0	0
North Bank West	9	2	0
Upper River	26	0	0
Western 1	106	9	6
Western 2	92	5	0
National	275	22	8

Source: HMIS, 2018

INSTITUTIONAL DELIVERIES

Table 36: Institutional Deliveries reported by the Regions in 2018.

	Total Deliveries	Skilled Deliveries	Percentage of Institutional Skilled Deliveries
Central River	8167	7944	97.3
Lower River	2368	2352	99.3
North Bank East	4738	4445	93.8
North Bank West	3695	3575	96.8
Upper River	7683	7677	99.9
Western 1	22441	18232	81.2
Western 2	10708	8975	83.8
National	59800	53200	89.0

Source: HMIS, 2018

Table 37: Institutional Live Births Reported by the Regions in 2018.

	Live Births	Percentage of Institutional Live Births.
Central River	7723	94.6
Lower River	2268	95.8
North Bank East	4499	95.0
North Bank West	3587	97.1
Upper River	7286	94.8
Western 1	21703	96.7
Western 2	10365	96.8
National	57431	96.0

Source: HMIS, 2018

Table 38: Institutional Still Births reported by the Regions in 2018.

	Macerated Still Births	Fresh Still Births	Percentage of Institutional Still Births.
Central River	235	209	5.4
Lower River	54	46	4.2
North Bank East	123	116	5.0
North Bank West	45	63	2.9
Upper River	239	158	5.2
Western 1	337	401	3.3
Western 2	142	201	3.2
National	1175	1194	4.0

Source: HMIS, 2018

Table 39: Number and Percentage of Live Births by Weight Reported by the Regions in 2018.

	No of Live Births < 2.5 kg	No of Live Births > 2.5 kg	% of Live Births < 2.5 kg	% of Live Births > 2.5 kg
Central River	605	7118	7.8	92.2
Lower River	222	2046	9.8	90.2
North Bank East	487	4012	10.8	89.2
North Bank West	339	3248	9.5	90.5
Upper River	638	6648	8.8	91.2

Western 1	3272	18431	15.1	84.9
Western 2	1080	9285	10.4	89.6
National	6643	50788	11.6	88.4

Source: HMIS, 2018

Table 40: Outcome of Institutional Deliveries Reported by the Regions in 2018.

	Breech	Caesarean Sections	Normal Delivery	Other Delivery	Vacuum Delivery
Central River	176	226	7592	53	120
Lower River	44	0	2294	11	19
North Bank East	78	152	4415	68	25
North Bank West	127	0	3460	93	15
Upper River	91	119	7432	4	37
Western 1	315	1440	20177	167	342
Western 2	139	387	9935	191	56
National	970	2324	55305	587	614

Source: HMIS, 2018

Table 41: Percentage Outcome of Institutional Deliveries Reported by the Regions in 2018.

	Breech	Caesarean Sections	Normal Delivery	Other Delivery	Vacuum Delivery
Central River	2.2	2.8	93.0	0.6	1.5
Lower River	1.9	0.0	96.9	0.5	0.8
North Bank East	1.6	3.2	93.2	1.4	0.5
North Bank West	3.4	0.0	93.6	2.5	0.4
Upper River	1.2	1.5	96.7	0.1	0.5
Western 1	1.4	6.4	89.9	0.7	1.5
Western 2	1.3	3.6	92.8	1.8	0.5
National	1.6	3.9	92.5	1.0	1.0

Source: HMIS, 2018

Table 42: Number of Deliveries at Health Facilities and VHS Reported by Regions in 2018.

	Facility Deliveries	VHS Deliveries	Total Deliveries
Central River	8167	983	9150
Lower River	2368	482	2850
North Bank East	4738	140	4878
North Bank West	3695	1590	5285
Upper River	7683	1689	9372

Western 1	22441	370	22811
Western 2	10708	347	11055
National	59800	5571	65371

Source: HMIS, 2018

Table 43: Number of Live Births conducted at Health Facilities and VHS Reported by the Regions in 2018.

	Health Facility Live Births	VHS Live Births	Total Live Births
Central River	7723	973	8696
Lower River	2268	472	2740
North Bank East	4499	104	4603
North Bank West	3587	1574	5161
Upper River	7286	1679	8965
Western 1	21703	366	22069
Western 2	10365	345	10710
National	57431	5513	62944

Source: HMIS, 2018

Table 44: Number of Still Births at Health Facilities and VHS Reported by the Regions in 2018.

	Macerated Still Births	Fresh Still Births	VHS Still Births	Total Still Births
Central River	235	209	10	454
Lower River	54	46	10	110
North Bank East	123	116	6	245
North Bank West	45	63	16	124
Upper River	239	158	10	407
Western 1	337	401	4	742
Western 2	142	201	2	345
National	1175	1194	58	2427

Source: HMIS, 2018

MATERNAL HEALTH SERVICES

Table 45: Number of Maternal Conditions Reported by Regions in 2018.

	Abortion	Anaemia in Pregnancy	Antepartum Haemorrhage	Delayed or Obstructed Labour
Central River	468	738	0	275
Lower River	120	449	32	50
North Bank East	228	286	78	68
North Bank West	135	337	17	55
Upper River	310	672	18	138
Western 1	536	418	205	504
Western 2	188	873	61	61
National	1985	3773	411	1151

Source: HMIS, 2018

Table 46: Number of Maternal Conditions Reported by Regions in 2018.

	Deliveries Requiring Interventions	Eclampsia Obstetric / Labour and Deliveries	Ectopic Pregnancy	Intrapartum Haemorrhage
Central River	0	90	7	327
Lower River	0	26	0	21
North Bank East	0	26	0	1
North Bank West	0	20	2	32
Upper River	0	59	0	164
Western 1	5	139	31	138
Western 2	0	44	13	134
National	5	404	53	817

Source: HMIS, 2018

Table 47: Number of Maternal Conditions Reported by Regions in 2018.

	Levonogestrol 750 mg tabs (Emergency contraceptive) stock out > 14 days	Live births < 2.5 kg	Malpresentation	Preexisting Hypertension
Central River	0	605	0	81
Lower River	7	222	0	33
North Bank East	0	487	1	64
North Bank West	0	339	0	114
Upper River	0	638	0	39
Western 1	0	3272	2	402
Western 2	0	1080	2	86
National	7	6643	5	819

Source: HMIS, 2018

Table 48: Number of Maternal Conditions Reported by Regions in 2018.

	Pre-Eclampsia	Retained Placenta	Ruptured Uterus	Women who Received Iron for Anaemia
Central River	387	19	2	2596
Lower River	81	2	0	920
North Bank East	112	9	0	297
North Bank West	85	6	0	2168
Upper River	425	5	0	8004
Western 1	456	39	12	2389
Western 2	101	11	3	494
National	1647	91	17	16868

Source: HMIS, 2018

DIARRHOEA

Table 49: Number of Diarrhoea Cases Reported by Regions in 2018.

	< 5 years Male	< 5 years Female	> 5 years Male	> 5 years Female
Central River	6935	6287	0	0
Lower River	2705	2299	0	0
North Bank East	3807	3415	216	271
North Bank West	1672	1720	0	0
Upper River	4430	3949	0	0
Western 1	9533	10873	168	261
Western 2	5154	5223	2	1
National	34236	33766	386	533

Source: HMIS, 2018

Table 50: Number of Diarrhoea With Some Dehydration Reported by Regions in 2018.

	< 5 years cases Male	< 5 years cases Female
Central River	558	500
Lower River	305	291
North Bank East	85	62
North Bank West	494	508
Upper River	537	476
Western 1	407	308
Western 2	713	609
National	3099	2754

Source: HMIS, 2018

Table 51: Number of Diarrhoea With Severe Dehydration Reported by Regions in 2018.

	< 5 years Male	< 5 years Female	> 5 years Male	> 5 years Female
Central River	23	27	47	34
Lower River	11	9	1	5
North Bank East	21	11	0	3
North Bank West	10	7	0	4
Upper River	40	45	30	47
Western 1	74	63	55	65
Western 2	23	13	13	5
National	202	175	146	163

Source: HMIS, 2018

Table 52: Number of Diarrhoea With Blood / Mucus Inpatient Cases Reported by Regions in 2018.

	< 5 years Male	< 5 years Female	> 5 years Male	> 5 years Female
Central River	1	2	2	6
Lower River	1	1	0	0
North Bank East	1	1	0	0
North Bank West	1	2	1	5
Upper River	3	6	15	18
Western 1	26	23	17	20
Western 2	8	5	9	3
National	41	40	44	52

Source: HMIS, 2018

MENTAL HEALTH SERVICES

Table 53: Percentage of Mental Health Conditions reported in 2018

Epilepsy	39.3
Schizophrenia	27.3
Drug induced psychosis	17.6
Organic psychosis	6.6
Phobia	2.5
Others	6.6

Table 54: Number of Anxiety Disorder and Child Mental Disorder Reported by Regions in 2018.

Region	Anxiety Disorder		Child Mental Disorder	
	Male	Female	Male	Female
Central River	5	12	0	0
Lower River	1	2	0	0
North Bank East	0	0	0	0
North Bank West	1	12	1	0
Upper River	24	54	0	0
Western 1	91	116	3	3
Western 2	1	4	0	0
National	123	200	4	3

Source: HMIS, 2018

Table 55: Number of Dementia the elderly and Depression Reported by Regions in 2018.

	Dementia The Elderly		Depression	
	Male	Female	Male	Female
Central River	1	0	22	18
Lower River	6	2	1	1
North Bank East	0	0	2	0
North Bank West	0	1	7	2
Upper River	0	0	1	13

Western 1	80	95	55	81
Western 2	1	0	17	35
National	88	98	105	150

Source: HMIS, 2018

Table 56: Number of Drug induced psychosis and Epilepsy reported by Regions in 2018.

	Drug Induced Psychosis		Epilepsy	
	Male	Female	Male	Female
Central River	32	0	246	398
Lower River	3	0	168	193
North Bank East	18	67	661	588
North Bank West	0	0	181	235
Upper River	13	1	329	435
Western 1	2553	44	841	707
Western 2	10	0	587	562
National	2629	112	3013	3118

Source: HMIS, 2018

Table 57: Number of Mania and Organic psychosis Reported by Regions in 2018.

	Male	Female	Male	Female
Central River	3	0	9	7
Lower River	0	0	11	7
North Bank East	0	0	101	81
North Bank West	3	0	1	5
Upper River	6	3	10	12
Western 1	2	2	447	295
Western 2	2	4	25	19
National	16	9	604	426

Source: HMIS, 2018

Table 58: Number of Other Mental Disorders and Phobia reported by Regions in 2018.

	Other Mental Disorders		Phobia	
	Male	Female	Male	Female
Central River	0	0	1	0
Lower River	2	0	1	0
North Bank East	0	0	0	0
North Bank West	4	2	1	0
Upper River	2	4	0	6
Western 1	48	41	148	237

Western 2	0	1	0	1
National	56	48	151	244

Source: HMIS, 2018

Table 59: Number of Pregnancy Related Mental Disorders and Schizophrenia Reported by Regions in 2018.

	Pregnancy Related Mental Disorders	Schizophrenia	
		Male	Female
Central River	1	41	25
Lower River	0	2	1
North Bank East	0	4	6
North Bank West	0	0	3
Upper River	0	18	11
Western 1	9	2678	1447
Western 2	0	4	8
National	10	2747	1501

Source: HMIS, 2018

Table 60: Admissions Due to Anxiety Disorder and Child Mental Disorder Reported by Regions in 2018.

Region	Anxiety Disorder		Child Mental Disorder	
	Male	Female	Male	Female
Central River	0	1	0	0
Lower River	0	0	0	0
North Bank East	0	0	0	0
North Bank West	0	0	0	0
Upper River	0	0	0	0
Western 1	0	0	0	1
Western 2	2	0	0	0
National	2	1	0	1

Source: HMIS, 2018

Table 61: Admissions Due to Dementia the Elderly and Depression Reported by Regions in 2018.

	Dementia The Elderly		Depression	
	Male	Female	Male	Female
Central River	0	0	0	0
Lower River	0	0	0	0
North Bank East	0	0	0	0

North Bank West	0	0	0	0
Upper River	0	3	0	2
Western 1	0	0	0	0
Western 2	0	0	0	1
National	0	3	0	3

Source: HMIS, 2018

Table 62: Admissions Due to Drug Induced Psychosis and Epilepsy Reported by Regions in 2018.

	Drug Induced Psychosis		Epilepsy	
	Male	Female	Male	Female
Central River	0	0	4	7
Lower River	0	0	1	0
North Bank East	0	0	13	9
North Bank West	1	0	0	0
Upper River	0	0	18	14
Western 1	0	0	15	11
Western 2	0	0	11	4
National	1	0	62	45

Source: HMIS, 2018

Table 63: Admissions Due to Mania and Organic Psychosis Reported by Regions in 2018.

	Mania		Organic Psychosis	
	Male	Female	Male	Female
Central River	0	0	0	0
Lower River	0	0	1	0
North Bank East	0	0	0	1
North Bank West	0	0	0	0
Upper River	0	0	0	3
Western 1	0	0	0	0
Western 2	1	0	0	1
National	1	0	1	5

Source: HMIS, 2018

Table 64: Admissions Due to Other Mental Disorders and Phobia Reported by Regions in 2018.

	Other Mental Disorders	Phobia
--	------------------------	--------

	Male	Female	Male	Female
Central River	0	0	0	0
Lower River	0	0	0	0
North Bank East	0	0	0	0
North Bank West	0	0	0	0
Upper River	0	0	0	0
Western 1	0	0	0	0
Western 2	0	0	0	0
National	0	0	0	0

Source: HMIS, 2018

Table 65: Admissions Due to Pregnancy Related Mental Disorders and Schizophrenia Reported by Regions in 2018.

	Pregnancy Related Mental Disorders	Schizophrenia	
		Male	Female
Central River	0	0	0
Lower River	0	0	0
North Bank East	1	0	0
North Bank West	0	0	0
Upper River	0	0	0
Western 1	0	0	0
Western 2	0	0	0
National	1	0	0

Source: HMIS, 2018

IMNCI

Table 66: Number of Acute Ear Infections reported by Regions in 2018.

	< 5 years Male	< 5 years Female
Central River	475	486
Lower River	265	246
North Bank East	332	298
North Bank West	250	261
Upper River	451	429
Western 1	1323	1492
Western 2	592	598
National	3688	3810

Source: HMIS, 2018

Table 67: Admissions Due to Acute EAR Infections reported by Regions in 2018.

	< 5 years Male	< 5 years Female
Central River	0	0
Lower River	7	3
North Bank East	0	1
North Bank West	1	1
Upper River	4	0
Western 1	25	23
Western 2	1	1
National	38	29

Source: HMIS, 2018

Table 68: Number of Chronic Ear Infections reported by Regions in 2018.

	< 5 years Male	< 5 years Female
Central River	128	112
Lower River	26	17
North Bank East	51	37
North Bank West	43	41
Upper River	110	90
Western 1	169	137
Western 2	160	192
National	687	626

Source: HMIS, 2018

Table 69: Admissions Due to Chronic EAR Infections reported by Regions in 2018.

	< 5 years Male	< 5 years Female
Central River	0	0
Lower River	0	0
North Bank East	0	1
North Bank West	1	0
Upper River	1	0
Western 1	1	2
Western 2	0	0
National	3	3

Source: HMIS, 2018

Table 70: Number of Eye Infections reported by Regions in 2018.

	< 5 years Male	< 5 years Female
Central River	406	455
Lower River	203	196
North Bank East	426	381
North Bank West	115	125
Upper River	378	340
Western 1	576	682
Western 2	523	657
National	2627	2836

Source: HMIS, 2018

Table 71: Admissions Due to Eye Infections reported by Regions in 2018.

	< 5 years Male	< 5 years Female
Central River	0	0
Lower River	1	0
North Bank East	3	3
North Bank West	2	3
Upper River	1	1
Western 1	22	24
Western 2	0	0
National	29	31

Source: HMIS, 2018

Table 72: Number of Low Weight With Anaemia Reported by Regions in 2018.

	< 5 years Male	< 5 years Female
Central River	0	0
Lower River	0	0
North Bank East	1	1
North Bank West	0	0
Upper River	162	141
Western 1	25	26
Western 2	39	58
National	227	226

Source: HMIS, 2018

Table 73: Admissions Due to Low Weight With Anaemia Reported by Regions in 2018.

	< 5 years Male	< 5 years Female
Central River	0	0
Lower River	0	0
North Bank East	14	16
North Bank West	0	0
Upper River	0	0
Western 1	0	0
Western 2	2	0
National	16	16

Source: HMIS, 2018

Table 74: Number of Moderated Acute Malnutrition Reported by Regions in 2018.

	< 5 years Male	< 5 years Female
Central River	11	16
Lower River	89	75
North Bank East	7	7
North Bank West	6	16
Upper River	28	54
Western 1	87	83
Western 2	33	55
National	261	306

Source: HMIS, 2018

Table 75: Number of No Pneumonia: Cough or Cold Reported by Regions in 2018.

	< 5 years Male	< 5 years Female
Central River	12004	12641
Lower River	4697	4505
North Bank East	4964	4527
North Bank West	3153	3428
Upper River	8253	8056
Western 1	23291	24588
Western 2	9749	10296
National	66111	68041

Source: HMIS, 2018

Table 76: Number of SAM Patient Treated According to the Protocol Reported by Regions in 2018.

	Male	Female
Central River	177	252
Lower River	45	58
North Bank East	104	132
North Bank West	57	131
Upper River	328	492
Western 1	47	76
Western 2	3	2
National	761	1143

Source: HMIS, 2018

Table 77: Admitted SAM Patients Treated According to the Protocol Reported by Regions in 2018.

	Male	Female
Central River	49	49
Lower River	23	22
North Bank East	23	28
North Bank West	8	8
Upper River	0	0
Western 1	9	7
Western 2	23	19
National	135	133

Source: HMIS, 2018

Table 78: Admitted SAM Patients Treated According to the Protocol and Died Reported by Regions in 2018.

	Male	Female
Central River	4	3
Lower River	0	0
North Bank East	3	4
North Bank West	0	0
Upper River	0	0
Western 1	0	0
Western 2	1	1
National	8	8

Source: HMIS, 2018

Table 79: Number of Serious Possible Bacterial Infection Reported by Regions in 2018.

	< 5 years Male	< 5 years Female
Central River	1188	1228
Lower River	313	313
North Bank East	223	227
North Bank West	390	375
Upper River	851	904
Western 1	1622	1866
Western 2	909	1121
National	5496	6034

Source: HMIS, 2018

Table 80: Admission Due to Serious Possible Bacterial Infection Reported by Regions in 2018.

	< 5 years Male	< 5 years Female
Central River	160	152
Lower River	22	22
North Bank East	51	33
North Bank West	38	25
Upper River	96	118
Western 1	23	17
Western 2	2	9
National	392	376

Source: HMIS, 2018

Table 81: Deaths Due to Serious Possible Bacterial Infection Reported by Regions in 2018.

	< 5 years Male	< 5 years Female
Central River	50	57
Lower River	1	3
North Bank East	0	0
North Bank West	2	0
Upper River	17	5
Western 1	0	0
Western 2	0	1
National	70	66

Source: HMIS, 2018

Table 82: Number of Severe Acute Malnutrition Reported by Regions in 2018.

	< 5 years Male	< 5 years Female
Central River	35	47
Lower River	67	53
North Bank East	25	49
North Bank West	3	6
Upper River	135	189
Western 1	39	29
Western 2	13	4
National	317	377

Source: HMIS, 2018

Table 83: Admission Due to Severe Acute Malnutrition Reported by Regions in 2018.

	< 5 years Male	< 5 years Female
Central River	18	22
Lower River	25	24
North Bank East	13	14
North Bank West	10	8
Upper River	0	1
Western 1	140	129
Western 2	50	51
National	256	249

Source: HMIS, 2018

Table 84: Deaths Due to Severe Acute Malnutrition Reported by Regions in 2018.

	< 5 years Male	< 5 years Female
Central River	1	1
Lower River	0	0
North Bank East	0	0
North Bank West	0	0
Upper River	0	0
Western 1	2	2
Western 2	0	0
National	3	3

Source: HMIS, 2018

Table 85: Number of Severe Anaemia Reported by Regions in 2018.

	< 5 years Male	< 5 years Female
Central River	0	0
Lower River	0	2
North Bank East	72	69
North Bank West	2	2
Upper River	2	3

Western 1	62	55
Western 2	14	56
National	152	187

Source: HMIS, 2018

Table 86: Admission Due to Severe Anaemia Reported by Regions in 2018.

	< 5 years Male	< 5 years Female
Central River	63	49
Lower River	10	36
North Bank East	38	22
North Bank West	6	1
Upper River	43	79
Western 1	66	48
Western 2	30	16
National	256	251

Source: HMIS, 2018

Table 87: Deaths Due to Severe Anaemia Reported by Regions in 2018.

	< 5 years Male	< 5 years Female
Central River	2	3
Lower River	1	2
North Bank East	1	2
North Bank West	0	0
Upper River	3	2
Western 1	6	0
Western 2	1	1
National	14	10

Source: HMIS, 2018

Table 88: Number of Severe Malnutrition with Anaemia Reported by Regions in 2018.

	< 5 years Male	< 5 years Female
Central River	1	0
Lower River	7	5
North Bank East	4	4
North Bank West	0	0
Upper River	9	15
Western 1	8	10

Western 2	4	4
National	33	38

Source: HMIS, 2018

Table 89: Admission Due to Severe Malnutrition with Other Medical Complications Reported by Regions in 2018.

	< 5 years Male	< 5 years Female
Central River	1	0
Lower River	8	4
North Bank East	1	0
North Bank West	2	3
Upper River	51	41
Western 1	0	0
Western 2	0	0
National	63	48

Source: HMIS, 2018

Table 90: Deaths Due to Severe Malnutrition with Other Medical Complications Reported by Regions in 2018.

	< 5 years Male	< 5 years Female
Central River	0	0
Lower River	0	2
North Bank East	0	0
North Bank West	0	0
Upper River	11	7
Western 1	0	0
Western 2	0	0
National	11	9

Source: HMIS, 2018

Table 91: Number of Persistent Diarrhoea Reported by Regions in 2018.

	< 5 years Male	< 5 years Female
Central River	124	113
Lower River	75	59
North Bank East	90	90
North Bank West	108	128
Upper River	77	130
Western 1	60	54
Western 2	152	203
National	686	777

Source: HMIS, 2018

Table 92: Admission Due to Severe Persistent Diarrhoea Reported by Regions in 2018.

	< 5 years Male	< 5 years Female
Central River	1	2
Lower River	3	3
North Bank East	13	10
North Bank West	1	0
Upper River	14	23
Western 1	38	62
Western 2	1	3
National	71	103

Source: HMIS, 2018

Table 93: Deaths Due to Severe Persistent Diarrhoea Reported by Regions in 2018.

	< 5 years Male	< 5 years Female
Central River	0	0
Lower River	0	0
North Bank East	2	1
North Bank West	0	0
Upper River	1	0
Western 1	0	0
Western 2	0	0
National	3	1

Source: HMIS, 2018

EYE CONDITIONS

Table 94: Number of Cataracts Reported by Regions in 2018.

	OPD Cases		Admissions	
	Male	Female	Male	Female
Central River	1189	1242	256	167
Lower River	193	304	56	54
North Bank East	166	216	70	87
North Bank West	434	442	111	102
Upper River	755	892	76	91
Western 1	397	519	8	20
Western 2	496	635	160	169
National	3630	4250	737	690

Source: HMIS, 2018

Table 95: Number of Conjunctivitis Reported by Regions in 2018.

	OPD Cases		Admissions	
	Male	Female	Male	Female
Central River	1228	1472	5	0
Lower River	509	554	0	0
North Bank East	761	928	28	10
North Bank West	1566	1506	0	0
Upper River	1859	2225	0	0
Western 1	4760	6430	1	1
Western 2	3011	3352	0	0
National	13694	16467	34	11

Source: HMIS, 2018

Table 96: Number of Glaucoma Reported by Regions in 2018.

	OPD Cases		Admissions	
	Male	Female	Male	Female
Central River	130	62	0	0
Lower River	50	35	0	0
North Bank East	28	25	1	0
North Bank West	33	23	0	0
Upper River	258	287	0	0
Western 1	66	76	3	2
Western 2	114	120	0	2

National	679	628	4	4
-----------------	------------	------------	----------	----------

Source: HMIS, 2018

Table 97: Number of Ophthalmia Neonatorum Reported by Regions in 2018.

	Male	Female
Central River	1	3
Lower River	9	0
North Bank East	1	3
North Bank West	25	20
Upper River	114	124
Western 1	100	123
Western 2	168	93
National	418	366

Source: HMIS, 2018

Table 98: Number of Other Eye Condition Reported by Regions in 2018.

	OPD Cases		Admissions	
	Male	Female	Male	Female
Central River	862	723	7	9
Lower River	701	961	2	1
North Bank East	718	820	24	25
North Bank West	532	545	7	0
Upper River	1301	1530	3	1
Western 1	1264	2000	0	0
Western 2	1430	1577	89	107
National	6808	8156	132	143

Source: HMIS, 2018

Table 99: Number of Refractive Error Reported by Regions in 2018.

	Male	Female
Central River	35	12
Lower River	49	27
North Bank East	98	83
North Bank West	361	325

Upper River	215	228
Western 1	82	75
Western 2	240	265
National	1080	1015

Source: HMIS, 2018

Table 100: Number of Trachoma Reported by Regions in 2018.

	OPD Cases		Admissions	
	Male	Female	Male	Female
Central River	4	5	0	0
Lower River	2	15	0	0
North Bank East	4	6	0	0
North Bank West	2	3	0	0
Upper River	16	14	0	0
Western 1	17	27	0	0
Western 2	32	35	16	12
National	77	105	16	12

Source: HMIS, 201

ACCIDENTS

Table 101: Number of Road Traffic Accidents Reported by Regions in 2018.

	OPD Cases		Admissions	
	Male	Female	Male	Female
Central River	322	161	10	5
Lower River	252	112	4	3
North Bank East	187	76	23	6
North Bank West	227	107	4	2
Upper River	559	264	19	16
Western 1	1764	944	108	47
Western 2	576	376	22	13
National	3887	2040	190	92

Source: HMIS, 2018

Table 102: Number of Rabies Reported by Regions in 2018.

	Male	Female
Central River	2	0
Lower River	1	0
North Bank East	0	0

North Bank West	0	1
Upper River	0	0
Western 1	2	2
Western 2	0	3
National	5	6

Source: HMIS, 2018

Table 103: Number of Other Injuries Reported by Regions in 2018.

	OPD Cases		Admissions	
	Male	Female	Male	Female
Central River	1866	1186	39	10
Lower River	1089	581	2	0
North Bank East	1669	943	20	7
North Bank West	916	460	8	0
Upper River	1349	716	35	21
Western 1	4163	2460	140	64
Western 2	2479	1479	32	13
National	13531	7825	276	115

Source: HMIS, 2018

Table 104: Number of Other Bites Reported by Regions in 2018.

	Male	Female
Central River	177	162
Lower River	55	43
North Bank East	101	51
North Bank West	54	36
Upper River	131	104
Western 1	47	53
Western 2	140	124
National	705	573

Source: HMIS, 2018

Table 105: Number of Ingestion of Harmful Substance Reported by Regions in 2018.

	OPD Cases		Admissions	
	Male	Female	Male	Female
Central River	13	14	0	0
Lower River	35	34	0	3
North Bank East	27	24	4	0
North Bank West	8	12	0	0
Upper River	33	22	1	0

Western 1	241	231	10	8
Western 2	41	51	0	0
National	398	388	15	11

Source: HMIS, 2018

Table 106: Number of Fracture Reported by Regions in 2018.

	OPD Cases		Admissions	
	Male	Female	Male	Female
Central River	61	40	21	5
Lower River	6	2	1	0
North Bank East	13	4	9	0
North Bank West	5	15	1	0
Upper River	13	11	6	0
Western 1	94	52	45	9
Western 2	18	19	0	1
National	210	143	83	15

Source: HMIS, 2018

Table 107: Number of to Fall from Height Reported by Regions in 2018.

	OPD Cases		Admissions	
	Male	Female	Male	Female
Central River	244	162	12	4
Lower River	129	77	4	1
North Bank East	117	71	9	4
North Bank West	105	77	1	1
Upper River	150	87	4	4
Western 1	369	255	18	9
Western 2	160	145	3	0
National	1274	874	51	23

Source: HMIS, 2018

Table 108: Number of Drowned Reported by Regions in 2018.

	OPD Cases		Admissions	
	Male	Female	Male	Female
Central River	4	5	0	3
Lower River	4	2	0	0

North Bank East	4	2	0	0
North Bank West	1	0	0	2
Upper River	5	10	0	0
Western 1	3	6	3	3
Western 2	42	50	0	2
National	63	75	3	10

Source: HMIS, 2018

Table 109: Number of Dog Bites Reported by Regions in 2018.

	OPD Cases		Admissions	
	Male	Female	Male	Female
Central River	65	49	2	0
Lower River	27	15	0	1
North Bank East	31	17	0	0
North Bank West	36	24	0	0
Upper River	27	14	0	1
Western 1	104	64	3	1
Western 2	65	50	3	0
National	355	233	8	3

Source: HMIS, 2018

Table 109: Number of Burns Reported by Regions in 2018.

	OPD Cases		Admissions	
	Male	Female	Male	Female
Central River	121	148	11	11
Lower River	79	81	7	3
North Bank East	102	102	15	8
North Bank West	83	88	5	5
Upper River	109	103	5	10
Western 1	350	377	82	66
Western 2	228	225	20	14
National	1072	1124	145	117

Source: HMIS, 2018

Table 110: Number of Snake Bites Reported by Regions in 2018.

	OPD Cases		Admissions	
	Male	Female	Male	Female
Central River	54	51	15	3
Lower River	18	9	1	0
North Bank East	50	29	22	16

North Bank West	40	24	10	1
Upper River	15	9	4	3
Western 1	12	21	4	2
Western 2	52	49	2	2
National	241	192	58	27

Source: HMIS, 2018

ORAL and DENTAL CONDITIONS

Table 111: Number of Toothache Reported by Regions in 2018.

	OPD Cases		Admissions	
	Male	Female	Male	Female
Central River	771	1379	1	1
Lower River	454	842	0	0
North Bank East	629	1044	0	0
North Bank West	396	763	0	0
Upper River	755	1477	5	5
Western 1	10906	14909	8	2
Western 2	1740	2304	0	0
National	15651	22718	14	8

Source: HMIS, 2018

Table 112: Number of Oral Disorder Reported by Regions in 2018.

	OPD Cases		Admissions	
	Male	Female	Male	Female
Central River	655	841	0	1
Lower River	76	152	1	1
North Bank East	547	704	3	2
North Bank West	71	112	0	0
Upper River	317	488	1	0
Western 1	2605	3548	2	4
Western 2	904	1463	3	2
National	5175	7308	10	10

Source: HMIS, 2018

Table 113: Number of Oral Thrust / Ulcer Reported by Regions in 2018.

	OPD Cases		Admissions	
	Male	Female	Male	Female
Central River	378	534	0	0
Lower River	321	480	1	2
North Bank East	200	222	0	0
North Bank West	213	274	0	0
Upper River	374	617	2	3
Western 1	1631	2269	3	2
Western 2	588	871	0	0
National	3705	5267	6	7

Source: HMIS, 2018

Table 114: Number of Dental Abscess Reported by Regions in 2018.

	OPD Cases		Admissions	
	Male	Female	Male	Female
Central River	202	343	4	2
Lower River	88	116	1	2
North Bank East	612	887	5	8
North Bank West	147	211	0	1
Upper River	345	556	7	13
Western 1	2021	2801	1	1
Western 2	470	613	4	1
National	3885	5527	22	28

Source: HMIS, 2018

Table 115: Number of Gingivitis Reported by Regions in 2018.

	Male	Female
Central River	28	58
Lower River	15	29
North Bank East	33	48
North Bank West	31	46
Upper River	141	132
Western 1	456	530
Western 2	124	194
National	828	1037

Source: HMIS, 2018

NON- COMMUNICABLE DISEASES

Table 116: Number of Hypertension Reported by Regions in 2018.

	OPD Cases		Admissions		Deaths	
	Male	Female	Male	Female	Male	Female
Central River	4640	8989	95	145	22	14
Lower River	2051	4326	17	26	2	3
North Bank East	2689	5175	45	48	4	3
North Bank West	1774	3699	13	21	0	2
Upper River	3338	7607	483	331	10	6
Western 1	5458	12183	259	317	18	28
Western 2	4487	8709	109	99	16	11
National	24437	50688	1021	987	72	67

Source: HMIS, 2018

Table 117: Number of Diabetes Reported by Regions in 2018.

	OPD Cases		Admissions		Deaths	
	Male	Female	Male	Female	Female	Male
Central River	612	819	23	29	3	5
Lower River	361	464	4	10	2	0
North Bank East	545	625	26	29	4	3
North Bank West	594	691	14	13	5	0
Upper River	538	779	38	63	3	1
Western 1	2972	5408	139	208	7	8
Western 2	1030	1573	37	39	3	4
National	6652	10359	281	391	27	21

Source: HMIS, 2018

Table 118: Number of Asthma Reported by Regions in 2018.

	OPD Cases		Admissions		Deaths	
	Male	Female	Male	Male	Female	Male
Central River	464	731	8	10	0	1
Lower River	303	355	7	10	1	0
North Bank East	481	466	15	27	0	0
North Bank West	245	326	4	2	0	0
Upper River	497	633	30	36	0	0
Western 1	2229	2456	80	56	1	0
Western 2	682	918	20	11	1	0
National	4901	5885	164	152	3	1

Source: HMIS, 2018

Table 119: Number of Cardiac Disorder Reported by Regions in 2018.

	OPD Cases		Admissions		Deaths	
	Male	Female	Male	Male	Female	Male
Central River	67	75	50	57	7	6
Lower River	107	98	9	8	2	1
North Bank East	60	73	17	28	3	1
North Bank West	7	5	14	10	8	1
Upper River	143	184	52	35	4	1
Western 1	243	362	47	59	2	2
Western 2	106	189	37	47	2	3
National	733	986	226	244	28	15

Source: HMIS, 2018

Table 120: Number of Other Non-Communicable Diseases Reported by Regions in 2018.

	OPD Cases		Admissions		Deaths	
	Male	Female	Male	Male	Female	Male
Central River	7415	15051	29	43	4	4
Lower River	964	1841	38	19	0	1
North Bank East	3536	7664	50	110	10	13
North Bank West	1111	1841	1	1	0	0
Upper River	3715	4925	18	38	0	0
Western 1	13797	18290	269	442	10	8
Western 2	7523	10781	103	112	15	21
National	38061	60393	508	765	39	47

Table 121: Number of Breast and Cervical Cancer Reported by Regions in 2018.

	Breast Cancer		Cervical Cancer	
	Cases	Admissions	Cases	Admissions
Central River	9	3	1	0
Lower River	1	0	2	3
North Bank East	0	1	0	2
North Bank West	1	0	1	0
Upper River	2	2	4	1
Western 1	1	2	128	4
Western 2	0	0	41	1
National	14	8	177	11

Source: HMIS, 2018

Table 122: Number of Lung Cancer Reported by Regions in 2018.

	OPD Cases		Admissions	
	Male	Female	Male	Female
Central River	0	0	0	0
Lower River	0	0	0	0
North Bank East	0	0	3	0
North Bank West	0	0	0	0
Upper River	0	1	0	0
Western 1	3	8	1	0
Western 2	0	0	0	0
National	3	9	4	0

Source: HMIS, 2018

Table 123: Number of Liver Cancer Reported by Regions in 2018.

	OPD Cases		Admissions		Deaths	
	Male	Female	Male	Female	Male	Female
Central River	50	33	25	20	1	4
Lower River	0	0	2	1	0	1
North Bank East	8	5	5	3	1	0
North Bank West	0	4	2	0	1	0
Upper River	6	1	4	3	0	0
Western 1	1	73	2	4	0	0
Western 2	3	1	1	3	0	0
National	68	117	41	34	3	5

Table 124: Number of Other Cancer Reported by Regions in 2018.

	OPD Cases		Admissions	
	Male	Female	Male	Female
Central River	0	1	8	0
Lower River	1	0	1	0
North Bank East	4	2	9	6
North Bank West	0	0	0	0
Upper River	1	0	0	1
Western 1	7	10	1	7
Western 2	2	4	0	0
National	15	16	19	14

Source: HMIS, 2018

Table 125: Number of Women Screened and Women Managed for Cervical Cancer Reported by Regions in 2018.

	Women Screened	Women Managed
Central River	0	0
Lower River	0	0
North Bank East	0	0
North Bank West	0	0
Upper River	0	0
Western 1	1840	240
Western 2	393	28
National	2233	268

Source: HMIS, 2018

Table 126: Number of Sickle Cell Reported by Regions in 2018.

	OPD Cases		Admissions	
	Male	Female	Male	Female
Central River	43	80	9	8
Lower River	60	91	3	2
North Bank East	24	45	12	6
North Bank West	24	21	0	0

Upper River	185	241	28	45
Western 1	518	611	100	39
Western 2	162	167	15	4
National	1016	1256	167	104

Source: HMIS, 2018

Table 127: Number of Renal Failure Reported by Regions in 2018.

	OPD Cases		Admissions		Deaths	
	Male	Female	Male	Female	Male	Female
Central River	31	32	0	1	0	0
Lower River	5	1	4	2	0	0
North Bank East	9	1	7	4	1	0
North Bank West	1	1	0	1	0	0
Upper River	2	2	10	19	1	0
Western 1	14	12	25	18	4	1
Western 2	0	1	1	0	1	0
National	62	50	47	44	7	1

Source: HMIS, 2018

Table 128: Number of Prostate Cancer Reported by Regions in 2018.

	Male
Central River	0
Lower River	1
North Bank East	0
North Bank West	0
Upper River	0
Western 1	89
Western 2	0
National	90

Source: HMIS, 2018

SEXUALLY TRANSMITTED DISEASES

Table 129: Number of Vaginal Discharge Reported by Regions in 2018.

	Cases	Admission	Deaths
Central River	3118	2	5
Lower River	924	7	1
North Bank East	522	1	0
North Bank West	896	9	0
Upper River	2109	70	0
Western 1	6685	74	2
Western 2	3160	18	0
National	17414	181	8

Source: HMIS, 2018

Table 130: Number of Urethral Discharge Reported by Regions in 2018.

	Cases	Admission	Deaths
Central River	1138	21	1
Lower River	337	3	1
North Bank East	80	0	0
North Bank West	321	8	0
Upper River	371	31	0
Western 1	1610	84	0
Western 2	1440	39	1
National	5297	186	3

Source: HMIS, 2018

Table 131: Number of Other sexually transmitted infections Reported by Regions in 2018.

	OPD Cases		Admission		Deaths	
	Male	Female	Male	Female	Male	Female
Central River	329	1039	1	3	0	0

Lower River	121	631	1	0	0	0
North Bank East	123	536	68	9	4	0
North Bank West	300	1022	0	1	0	0
Upper River	485	1227	9	18	0	0
Western 1	399	910	2	4	0	0
Western 2	113	337	0	0	1	0
National	1870	5702	81	35	5	0

Source: HMIS, 2018

Table 132: Number of Lower Abdominal Pain Reported by Regions in 2018.

	OPD Cases		Admissions		Deaths
	Non-Pregnant Woman	In Pregnancy	Non-Pregnant Woman	In Pregnancy	In Pregnancy
Central River	1	4116	0	9	0
Lower River	35	969	0		0
North Bank East	65	2371	10	9	0
North Bank West	71	1959	0	9	0
Upper River	193	4250	7	99	0
Western 1	592	4273	0	53	7
Western 2	60	1932	0	20	0
National	1017	19870	17	199	7

Source: HMIS, 2018

ANTI RETROVIRAL THERAPY / HIV

Table 133: Number of adults and children that initiated ART with an undetectable viral load at 12 months (<1000 copies /ml) Reported by Regions in 2018.

Region	Male	Female
CRR	0	0
Lower River	1	10
North Bank East	0	0
North Bank West	4	4
Upper River	2	11
Western 1	1	10
Western 2	13	62
National	21	97

Source: HMIS, 2018

Table 134: Number of adults and children that on ART who had a viral load test Reported by Regions in 2018.

	Male	Female
CRR	0	0
Lower River	23	48
North Bank East	0	0
North Bank West	12	33
Upper River	23	95
Western 1	35	81
Western 2	90	268
National	183	525

Source: HMIS, 2018

Table 135: Number of PLHIV Currently on ART by Sex and Age Reported by Regions in 2018.

	Male	Female
CRR	1459	4015
Lower River	824	2565
North Bank East	967	2260
North Bank West	293	685
Upper River	1116	3267
Western 1	6983	15179
Western 2	8488	25883
National	20130	53854

Source: HMIS, 2018

Table 136: Number of PLHIV Currently on ART by Sex and HIV Type Reported by Regions in 2018.

	Male	Female
CRR	1459	4015
Lower River	835	2564
North Bank East	967	2258
North Bank West	293	685
Upper River	1116	3267
Western 1	7009	15154
Western 2	8504	25867
National	20183	53810

Source: HMIS, 2018

Table 137: Number of ART PLHIV NOT on ART who Died from AIDS Related Conditions Reported by Regions in 2018.

	Male	Female
CRR	0	1
Lower River	0	0
North Bank East	0	0
North Bank West	0	2
Upper River	0	2
Western 1	3	3
Western 2	17	9
National	20	17

Source: HMIS, 2018

Table 138: Number of PLHIV on ART transferred in (ie From Another ART Centre) Reported by Regions in 2018.

	Male	Female
CRR	1	3
Lower River	1	4
North Bank East	1	6
North Bank West	2	3
Upper River	1	5
Western 1	6	7
Western 2	3	15
National	15	43

Source: HMIS, 2018

Table 139: Number of PLHIV on ART Transferred Out (ie To Another ART Centre) Reported by Regions in 2018.

	Male	Female
CRR	3	9
Lower River	2	5
North Bank East	3	9
North Bank West	0	3
Upper River	3	9
Western 1	7	9
Western 2	8	31
National	26	75

Source: HMIS, 2018

Table 140: Number of PLHIV on ART Who Died Reported by Regions in 2018.

	Male	Female
CRR	11	13
Lower River	12	7
North Bank East	9	5
North Bank West	0	3
Upper River	12	13
Western 1	39	40
Western 2	51	62
National	134	143

Source: HMIS, 2018

Table 141: Number of PLHIV Who Defaulted / Stopped on ART Reported by Regions in 2018.

	Male	Female
CRR	13	35
Lower River	38	102
North Bank East	31	61
North Bank West	14	25
Upper River	50	136
Western 1	167	358
Western 2	320	767
National	633	1484

Source: HMIS, 2018

Table 142: Number of PLHIV who Restart ART Reported by Regions in 2018.

	Male	Female
CRR	9	31
Lower River	26	68
North Bank East	10	20
North Bank West	8	5
Upper River	29	106
Western 1	81	162
Western 2	154	352
National	317	744

Source: HMIS, 2018

Table 143: Number of PLHIV Who Began ART for the First Time by Gender and Age Reported by Regions in 2018.

	Male	Female
Central River	56	134
Lower River	45	88
North Bank East	23	42
North Bank West	19	36
Upper River	33	90
Western 1	236	467
Western 2	196	491
National	608	1348

Source: HMIS, 2018

Table 144: Number of PLHIV Who Began ART for the First Time by Gender and Type Reported by Regions in 2018.

	Male	Female
CRR	56	134
Lower River	45	88
North Bank East	23	42
North Bank West	19	36
Upper River	33	90
Western 1	236	467
Western 2	196	491
National	608	1348

Source: HMIS, 2018

Table 145: Number of ART PLHIV Who Died from AIDS Related Conditions by Gender and Type Reported by Regions in 2018.

	Male	Female
CRR	11	12
Lower River	12	4
North Bank East	9	5
North Bank West	0	3
Upper River	15	14
Western 1	34	42
Western 2	67	72
National	148	152

Source: HMIS, 2018

Table 146: Number of Clients Who Received Pre-Test and Post Test Counselling and Were Tested for HIV for HIV Reported by Regions in 2018.

	Pre-Test Counselling		Post Test Counselling		Tested For HIV	
	Male	Female	Male	Female	Male	Female
CRR	2439	1006	2437	1005	2438	1005
Lower River	708	649	690	640	696	641
North Bank East	1210	938	1209	934	1209	934
North Bank West	280	197	273	188	274	192
Upper River	1053	851	1050	850	1050	850
Western 1	11121	5949	10945	5807	11010	5874
Western 2	1749	2449	1739	2437	1739	2439
National	18560	12039	18343	11861	18416	11935

Source: HMIS, 2018

Table 147: Number of Test Results by Category Reported by Regions in 2018.

	Test Results S-1		Test Results S-2		Test Results S-3		Test Results S-4	
	Male	Female	Male	Female	Male	Female	Male	Female
CRR	126	184	3	9	5	13	3	4
Lower River	58	62	5	7	15	25	0	2
North Bank East	29	44	3	7	2	7	0	2
North Bank West	10	20	0	4	2	4	1	2
Upper River	49	93	3	5	3	7	1	4
Western 1	486	743	45	68	45	73	16	18
Western 2	210	390	19	40	18	48	2	5
National	968	1536	78	140	90	177	23	37

Source: HMIS, 2018

Table 148: Number of Out-Reach Clients Who Received Pre-Test Counselling, Tested for HIV and Post Test Counselling for HIV Reported by Regions in 2018.

	Pre-Test Counselling		Tested for HIV		Post Test Counselling	
	Male	Female	Male	Female	Male	Female
CRR	11	154	11	152	11	152
Lower River	233	416	233	413	233	413

North Bank East	1	7	1	7	1	7
North Bank West	8	105	8	104	8	104
Upper River	35	85	35	85	35	85
Western 1	52	47	52	47	52	47
Western 2	17	147	17	147	17	147
National	357	961	357	955	357	955

Source: HMIS, 2018

Table 149: Number of Out Reach Test Results by Category Reported by Regions in 2018.

	Test Results S-1		Test Results S-2		Test Results S-3		Test Results S-4	
	Male	Female	Male	Female	Male	Female	Male	Female
CRR	0	5	0	0	0	0	0	0
Lower River	3	11	0	2	0	1	0	0
North Bank East	0	0	0	0	0	0	0	0
North Bank West	0	1	0	0	0	0	0	0
Upper River	1	1	0	0	0	0	0	0
Western 1	5	5	1	0	0	1	0	0
Western 2	0	0	0	0	0	0	0	0
National	9	23	1	2	0	2	0	0

Source: HMIS, 2018

TUBERCULOSIS

Table 150: Number of All new and relapse cases of TB (bacteriologically confirmed or clinically diagnosed) Reported by Regions in 2018.

	0-4 years	0-4 years	5-14 years	5-14 years	15-24 years	15-24 years	25-34 years	25-34 years
	Male		Female		Male		Female	
Central River	0	1	1	0	15	10	13	9
Lower River	0	0	0	1	3	2	10	2
North Bank East	2	2	2	2	6	8	8	5
North Bank West	0	0	0	1	6	4	3	3
Upper River	0	0	2	0	10	8	17	11
Western 1	16	10	21	21	135	67	189	88
Western 2	6	10	17	11	71	46	91	52
National	24	23	43	36	246	145	331	170

Source: HMIS, 2018

Table 151: Number of All new and relapse cases of TB (bacteriologically confirmed or clinically diagnosed) Reported by Regions in 2018.

	35 - 44 years Male	35 - 44 years Female	45 - 54 years Male	45 - 54 years Female	55-64 years Male	55-64 years Female	65 years and above Male	65 years and above Female
Central River	7	6	7	6	15	6	12	2
Lower River	12	1	4	0	4	1	3	3
North Bank East	9	4	15	5	6	1	4	4
North Bank West	7	3	6	1	1	0	1	0
Upper River	16	16	9	5	13	5	9	5
Western 1	171	61	73	44	41	22	48	28
Western 2	68	71	41	34	25	19	28	18
National	290	162	155	95	105	54	105	60

Source: HMIS, 2018

Table 152: Number of Extrapulmonary Bacteriologically Confirmed or Clinically Diagnosed Reported by Regions in 2018.

	Male	Female
Central River	4	1
Lower River	0	0
North Bank East	5	5
North Bank West	1	3
Upper River	2	3
Western 1	56	25
Western 2	25	16
National	93	53

Source: HMIS, 2018

Table 153: Number of HIV Positive TB patients and HIV Positive TB Patients on CPT Reported by Regions in 2018.

	HIV Positive TB Patients Male	HIV Positive TB Patients Female	HIV Positive TB Patients on CPT Male	HIV Positive TB Patients on CPT Female
Central River	11	9	10	9
Lower River	7	3	7	3
North Bank East	10	3	10	3
North Bank West	1	2	1	1
Upper River	4	7	4	7
Western 1	60	66	47	57
Western 2	72	134	70	131
National	165	224	149	211

Source: HMIS, 2018

Table 154: Number of HIV Positive TB patients on ART Reported by Regions in 2018.

	Male	Female
Central River	7	4
Lower River	6	2
North Bank East	9	3
North Bank West	1	1
Upper River	4	7
Western 1	25	33
Western 2	50	102
National	102	152

Source: HMIS, 2018

Table 155: Number of Others Previously Treated Patient Reported by Regions in 2018.

	Male	Female
Central River	0	0
Lower River	0	0
North Bank East	1	0
North Bank West	10	7
Upper River	2	2
Western 1	18	9
Western 2	0	2
National	31	20

Source: HMIS, 2018

Table 156: Number of Patients Tested for HIV Before or During TB Treatment Reported by Regions in 2018.

	Male	Female
Central River	70	61
Lower River	28	7
North Bank East	69	39
North Bank West	21	18
Upper River	78	50
Western 1	631	330
Western 2	303	237
National	1200	742

Source: HMIS, 2018

Table 157: Number of Patients with Presumptive TB Undergoing Bacteriological Examination Reported by Regions in 2018.

	Male	Female
Central River	330	335
Lower River	254	173
North Bank East	431	411
North Bank West	84	64
Upper River	380	365
Western 1	2150	1634
Western 2	952	999
National	4581	3981

Source: HMIS, 2018

Table 158: Number of Patients with Presumptive TB with Positive Bacteriological Examination Result Reported by Regions in 2018.

	Male	Female
Central River	65	38
Lower River	34	6
North Bank East	47	28
North Bank West	20	5
Upper River	55	35
Western 1	400	193
Western 2	174	99
National	795	404

Source: HMIS, 2018

Table 159: Number of Pulmonary Bacteriologically Confirmed New Cases Reported by Regions in 2018.

	Male	Female
Central River	66	36
Lower River	37	10
North Bank East	32	25
North Bank West	26	14
Upper River	54	33
Western 1	469	194
Western 2	221	103
National	905	415

Source: HMIS, 2018

Table 160: Number of Pulmonary Bacteriologically Confirmed Previously Treated After Default Reported by Regions in 2018.

	Male	Female
Central River	1	0
Lower River	0	0
North Bank East	0	0
North Bank West	0	0
Upper River	0	0
Western 1	6	1
Western 2	3	1
National	10	2

Source: HMIS, 2018

Table 161: Number of Pulmonary Bacteriologically Confirmed Previously Treated After Failure Reported by Regions in 2018.

	Male	Female
Central River	2	1
Lower River	0	0
North Bank East	6	2
North Bank West	0	0
Upper River	0	0
Western 1	3	1
Western 2	0	0
National	11	4

Source: HMIS, 2018

Table 162: Number of Pulmonary Bacteriologically Confirmed Previously Treated Relapse Reported by Regions in 2018.

	Male	Female
Central River	3	1
Lower River	0	0
North Bank East	9	4
North Bank West	0	0
Upper River	1	0
Western 1	20	6
Western 2	4	1
National	37	12

Source: HMIS, 2018

Table 163: Number of Pulmonary Clinically Diagnosed Reported by Regions in 2018.

	Male	Female
Central River	4	0
Lower River	5	2
North Bank East	22	9
North Bank West	12	9
Upper River	42	23
Western 1	199	133
Western 2	102	126
National	386	302

Source: HMIS, 2018

GENDER BASED VOILENCE

Table 164: Number of Assault Cases Reported by Regions in 2018.

	Male	Female
Central River	61	66
Lower River	24	41
North Bank East	28	15
North Bank West	6	9
Upper River	54	75
Western 1	1712	753
Western 2	35	15
National	1920	974

Source: HMIS, 2018

Table 165: Number of Child Abuse Cases Reported by Regions in 2018.

	Male	Female
Central River	0	0
Lower River	0	0
North Bank East	0	0
North Bank West	0	0
Upper River	0	0
Western 1	0	1
Western 2	0	0
National	0	1

Source: HMIS, 2018

Table 166: Number of Rape Cases Reported by Regions in 2018.

	Male	Female
Central River	0	2
Lower River	0	0
North Bank East	0	0
North Bank West	0	0
Upper River	0	1
Western 1	0	75
Western 2	0	1
National	0	79

Source: HMIS, 2018

REFERRALS

Table 167: Number of Referrals Due to Severe Malaria Reported by Regions in 2018.

	< 5 years Male	< 5 years Female	> 5 years Male	> 5 years Female
Central River	4	6	16	13
Lower River	2	5	5	3
North Bank East	0	1	2	2
North Bank West	15	4	5	1
Upper River	16	7	27	34
Western 1	10	2	20	28
Western 2	13	7	10	7
National	60	32	85	88

Source: HMIS, 2018

Table 168: Number of Referrals Due to Anaemia Reported by Regions in 2018.

	< 5 years Male	< 5 years Female	> 5 years Male	> 5 years Female	Pregnancy
Central River	30	27	56	139	83
Lower River	2	5	4	14	57
North Bank East	5	2	4	9	18
North Bank West	7	7	18	11	32
Upper River	24	31	31	54	64
Western 1	19	28	38	62	87
Western 2	6	4	21	33	42
National	93	104	172	322	383

Source: HMIS, 2018

Table 169: Number of Referrals Due to Diarrhoea with Blood Reported by Regions in 2018.

	< 5 years Male	< 5 years Female	> 5 years Male	> 5 years Female
Central River	20	12	24	32
Lower River	0	0	0	0
North Bank East	0	0	0	1
North Bank West	0	1	7	2
Upper River	0	0	2	4
Western 1	2	0	0	1
Western 2	2	0	0	1

National	24	13	33	41
-----------------	-----------	-----------	-----------	-----------

Source: HMIS, 2018

Table 170: Number of Referrals Due to Severe Persistent Diarrhoea Reported by Regions in 2018.

	> 5 years Male	> 5 years Female
Central River	33	26
Lower River	0	0
North Bank East	1	0
North Bank West	0	0
Upper River	1	0
Western 1	2	2
Western 2	0	1
National	37	29

Source: HMIS, 2018

Table 171: Number of Referrals Due to Differentially able Reported by Regions in 2018.

	< 5 years Male	< 5 years Female	> 5 years Male	5 years Female
Central River	0	0	3	0
Lower River	0	0	0	0
North Bank East	0	0	0	0
North Bank West	0	0	0	0
Upper River	0	0	0	0
Western 1	0	0	0	0
Western 2	2	0	2	0
National	2	0	5	0

Source: HMIS, 2018

Table 172: Number of Referrals Due to Severe Malnutrition Reported by Regions in 2018.

	< 5 years Male	< 5 years Female

Central River	15	7
Lower River	2	2
North Bank East	7	2
North Bank West	2	3
Upper River	6	12
Western 1	8	9
Western 2	3	6
National	43	41

Source: HMIS, 2018

Table 173: Number of Referrals Due to Severe Malnutrition with Anaemia Reported by Regions in 2018.

	< 5 years Male	< 5 years Female
Central River	2	5
Lower River	2	0
North Bank East	0	0
North Bank West	3	4
Upper River	10	9
Western 1	4	4
Western 2	0	0
National	21	22

Source: HMIS, 2018

Table 174: Number of Referrals Due to Severe Pneumonia Reported by Regions in 2018.

	< 5 years Male	< 5 year Female	> 5 year Male	> 5 year Female
Central River	46	52	18	29
Lower River	5	9	3	2
North Bank East	38	38	2	1
North Bank West	13	10	8	2
Upper River	39	39	5	9
Western 1	61	44	43	41
Western 2	19	10	5	5
National	221	202	84	89

Source: HMIS, 2018

Table 175: Number of Referrals Due to Skin Disorder Reported by Regions in 2018.

	< 5 years Male	< 5 years Female	> 5 years Male	> 5 years Female
Central River	78	114	61	72

Lower River	14	16	13	11
North Bank East	17	15	2	4
North Bank West	30	35	20	36
Upper River	7	12	20	30
Western 1	4	4	13	14
Western 2	16	11	6	8
National	166	207	135	175

Source: HMIS, 2018

Table 176: Number of Referrals Due to Hypertension and Renal Failures Reported by Regions in 2018.

	Hypertension Male	Hypertension Female	Renal Failure Male	Renal Failure Female
Central River	110	122	5	1
Lower River	14	19	3	3
North Bank East	10	16	3	
North Bank West	21	31	4	
Upper River	47	70	2	3
Western 1	119	113	7	4
Western 2	29	43	3	1
National	350	414	27	12

Source: HMIS, 2018

Table 177: Number of Referrals Due to Asthma, Cancer, Cardiac Disorder and Diabetes Reported by Regions in 2018.

	Asthma Male	Asthma Female	Cancer Male	Cancer Female	Cardiac disorder Male	Cardiac disorder Female	Diabetes Male	Diabetes Female
Central River	32	43	1		13	12	29	28
Lower River	5	2	1	2	8	13	7	6
North Bank East	1	1		5	8	3	6	2
North Bank West	9	6		2	13	13	15	6
Upper	11	8	2	4	23	24	12	12

River								
Western 1	23	23	2	4	30	26	42	60
Western 2	6	15		1	9	10	26	26
National	87	98	6	18	104	101	137	140

Source: HMIS, 2018

Table 178: Number of Referrals Due to Bites and Drowned Reported by Regions in 2018.

	Dog Bites Male	Dog Bites Female	Drowned Male	Drowned Female	Snake Bites Male	Snake Bites Female	Other Bites Male	Other Bites Female
Central River	3		2	0	16	4	34	32
Lower River	3		0	0	2	2	3	2
North Bank East	1	2	0	0	4	4	3	1
North Bank West	4	2	1	0	18	9	2	2
Upper River	1		1	1	4	5	4	3
Western 1	8	6	2	0	7	3		0
Western 2	1	4	0	1	10	2	3	0
National	21	14	6	2	61	29	49	40

Source: HMIS, 2018

Table 179: Number of Referrals Due to Fracture and fall from Height Reported by Regions in 2018.

	Fracture Male	Fracture Female	Fall from Height Male	Fall from Height Female
Central River	55	15	25	7
Lower River	25	12	10	4
North Bank East	18	6	4	4
North Bank West	19	5	19	8
Upper River	25	6	21	3
Western 1	82	28	21	9
Western 2	40	25	25	7
National	264	97	125	42

Source: HMIS, 2018

Table 180: Number of Referrals Due to Maternal Complications Reported by Regions in 2018.

	Eclampsia	PIH / Pre-Eclampsia	Abortion	Antepartum Haemorrhage	FGM/C Complication	Intrapartum Haemorrhage
Central River	36	75	31	113	1	2
Lower River	16	35	16	54	1	4

North Bank East	7	33	5	16	2	1
North Bank West	29	57	12	64	10	10
Upper River	30	48	15	82	1	12
Western 1	72	222	127	97	30	13
Western 2	39	104	52	56	9	35
National	229	574	258	482	54	77

Source: HMIS, 2018

Table 181: Number of Referrals Due to Obstetric and Deliveries Complications Reported by Regions in 2018.

	Other Obstetric complication	Obstetric and Deliveries	Delayed or Obstructed Labour	Malpresentation	Post -Partum Haemorrhage	Retained Placenta
Central River	35	57	143	30	71	9
Lower River	32	18	53	4	18	1
North Bank East	9	0	43	3	5	4
North Bank West	14	34	115	24	22	1
Upper River	20	32	102	11	23	3
Western 1	176	0	266	54	50	21
Western 2	113	0	82	29	18	9
National	399	141	804	155	207	48

Source: HMIS, 2018

Table 182: Number of Referrals Due to Ingestion of Harmful Substance Reported by Regions in 2018.

	Male	Female
Central River	3	6
Lower River	0	0
North Bank East	1	0
North Bank West	2	1
Upper River	2	1
Western 1	7	7
Western 2	1	2
National	16	17

Source: HMIS, 2018

Table 183: Number of Referrals Due to Liver / Hepatic Disorder Reported by Regions in 2018.

	Male	Female
Central River	1	2
Lower River	0	1
North Bank East	1	0
North Bank West	1	0
Upper River	1	0
Western 1	3	1
Western 2	1	3
National	8	7

Source: HMIS, 2018

Table 184: Number of Referrals Due to Moderate Malnutrition + anaemia Reported by Regions in 2018.

	< 5 Male	< 5 Female
Central River	1	2
Lower River	3	3
North Bank East	0	1
North Bank West	0	0
Upper River	1	5
Western 1	0	4
Western 2	0	2
National	5	17

Source: HMIS, 2018

Table 185: Number of Referrals Due to Other Injuries Reported by Regions in 2018.

	Male	Female
Central River	73	46
Lower River	46	19
North Bank East	9	4
North Bank West	29	12
Upper River	31	9
Western 1	142	42
Western 2	39	29
National	369	161

Source: HMIS, 2018

Table 186: Number of Referrals Due to Suspected TB Reported by Regions in 2018.

	Male	Female
Central River	16	12
Lower River	6	7
North Bank East	11	9
North Bank West	11	4
Upper River	14	12
Western 1	51	27
Western 2	19	10
National	128	81

Source: HMIS, 2018

Table 187: Number of Referrals Due to Cancers Reported by Regions in 2018.

	Breast Cancer	Cervical Cancer	Prostate Cancer
Central River	4	2	2
Lower River	0	1	0
North Bank East	1	0	1
North Bank West	2	1	0
Upper River	3	3	1
Western 1	5	6	1
Western 2	2	6	1
National	17	19	6

Source: HMIS, 2018

Table 188: Number of Referrals of Neonates with Complication Reported by Regions in 2018.

	Male	Female
Central River	3	64
Lower River	7	31
North Bank East	8	48
North Bank West	30	80
Upper River	8	51
Western 1	15	75
Western 2	0	136
National	71	485

Source: HMIS, 2018

Table 189: Number of Referrals Due to Other NCD Reported by Regions in 2018.

	Male	Female
Central River	100	84
Lower River	24	12
North Bank East	36	40
North Bank West	35	23
Upper River	59	30
Western 1	161	162
Western 2	72	43
National	487	394

Source: HMIS, 2018

Table 190: Number of Referrals Due to Burns Reported by Regions in 2018.

	Male	Female
Central River	6	8
Lower River	3	0
North Bank East	1	0
North Bank West	0	3
Upper River	4	2
Western 1	19	23
Western 2	4	3
National	37	39

Source: HMIS, 2018

EXPANDED PROGRAMME ON IMMUNIZATION

Table 191: Number of BCG, Polio 0 and Hepatitis B Administered by Regions in 2018.

	BCG Male	BCG Female	Polio 0 Male	Polio 0 Female	Hepatitis B Male	Hepatitis B Female
Central River	5016	4713	5040	4702	5079	4733
Lower River	1835	1787	1846	1796	1852	1815
North Bank East	2451	2337	2437	2324	2567	2434
North Bank West	2043	1925	2057	1955	2050	1946
Upper River	5166	5136	4867	4869	5076	5078
Western 1	12414	11974	12390	11955	12265	11864
Western 2	5214	4981	5205	5008	5178	5008

National	34139	32853	33842	32609	34067	32878
-----------------	--------------	--------------	--------------	--------------	--------------	--------------

Source: HMIS, 2018

Table 192: Number of PENTA's administered by Regions in 2018.

	PENTA 1 Male	PENTA 1 Female	PENTA 2 Male	PENTA 2 Female	PENTA 3 Male	PENTA 3 Female
Central River	4826	4424	4735	4310	4548	4339
Lower River	1711	1576	1594	1508	1606	1519
North Bank East	2312	2135	2268	2093	2109	1875
North Bank West	1989	1827	1960	1828	1885	1783
Upper River	5070	4760	4927	4683	4750	4523
Western 1	11101	10597	10331	9544	9629	9153
Western 2	4663	3845	4127	3553	3929	3411
National	31672	29164	29942	27519	28456	26603

Source: HMIS, 2018

Table 193: Number of Pneumococcal Administered by Regions in 2018.

	Pneumoco ccal 1 Male	Pneumoco ccal 1 Female	Pneumoco ccal 2 Male	Pneumoco ccal 2 Female	Pneumoco ccal 3 Male	Pneumoc ccal 3 Female
Central River	4799	4408	4708	4324	4419	4259
Lower River	1644	1519	1522	1431	1555	1494
North Bank East	2298	2099	2190	2073	2112	1890
North Bank West	1989	1834	1962	1821	1878	1772
Upper River	5025	4785	4873	4616	4695	4574
Western 1	11238	10842	10193	9485	9616	9065
Western 2	4582	3772	3998	3477	3969	3463
National	31575	29259	29446	27227	28244	26517

Source: HMIS, 2018

Table 194: Number of Polio's administered by Regions in 2018.

	Polio 1 Male	Polio 1 Female	Polio 2 Male	Polio 2 Female	Polio 3 Male	Polio 3 Female
Central River	4749	4361	4647	4238	4439	4269
Lower River	1714	1578	1594	1493	1613	1529
North Bank East	2290	2127	2242	2049	2139	1915
North Bank West	1991	1801	1960	1827	1885	1783
Upper River	5024	4776	4880	4608	4608	4360
Western 1	11093	10507	10381	9700	9735	9664
Western 2	4663	3858	4126	3555	3912	3385

National	31524	29008	29830	27470	28331	26905
-----------------	--------------	--------------	--------------	--------------	--------------	--------------

Source: HMIS, 2018

Table 195: Number of Measles-Rubella's and Polio 4 Plus Administered by Regions in 2018.

	Measles- Rubella 1 Male	Measles- Rubella 1 Female	Measles- Rubella 2 Male	Measles- Rubella 2 Female	Polio 4 Plus Male	Polio 4 Plus Female
Central River	4827	4638	3788	3312	8432	7797
Lower River	1776	1591	1169	1077	2881	2586
North Bank East	2256	2066	1634	1522	3431	3196
North Bank West	1970	1816	1670	1612	3522	3233
Upper River	4892	4653	3710	3389	8027	7561
Western 1	9942	9352	6466	6293	14127	13160
Western 2	4189	3474	2584	2319	5871	5018
National	29852	27590	21021	19524	46291	42551

Source: HMIS, 2018

Table 196: Number of DPT Booster and Mebendazole 500 mg Administered by Regions in 2018.

	DPT Booster Male	DPT Booster Female	Mebendazole 500 mg prevention 12-59 months Male	Mebendazole 500 mg prevention 12-59 months Female
Central River	3953	3475	9777	9430
Lower River	1262	1084	5031	4980
North Bank East	1691	1573	10697	11048
North Bank West	1676	1654	8910	9032
Upper River	3703	3413	15750	16038
Western 1	6681	6244	12646	11419
Western 2	3239	2865	6335	5790
National	22205	20308	69146	67737

Source: HMIS, 2018

Table 197: Number of Rota's administered by Regions in 2018.

	Rota 1 Male	Rota 1 Female	Rota 2 Male	Rota 2 Female	Rota 3 Male	Rota 3 Female
--	----------------	------------------	----------------	------------------	----------------	------------------

Central River	4810	4401	4701	4336	51	61
Lower River	1708	1573	1590	1489	29	28
North Bank East	2281	2098	2217	2033	48	41
North Bank West	1984	1770	1892	1821	49	46
Upper River	5048	4796	4926	4699	110	111
Western 1	11514	10462	10291	9612	179	172
Western 2	4546	3776	4196	3563	75	62
National	31891	28876	29813	27553	541	521

Source: HMIS, 2018

Table 198: Number of IVP and TT's administered by Regions in 2018.

	IPV Male	IPV Female	TT 1 Female	TT 2 Plus Female
Central River	2952	2852	2181	6203
Lower River	1096	1047	778	2031
North Bank East	1426	1289	951	3362
North Bank West	1343	1282	768	2519
Upper River	3173	3073	2591	6215
Western 1	5513	5070	6126	14828
Western 2	2343	2008	1752	5707
National	17846	16621	15147	40865

Source: HMIS, 2018

Table 199: Number of Vitamin A Doses (Prevention) Administered by Regions in 2018.

	Vitamin A (Prevention) 12-59 months Male	Vitamin A (Prevention) 12-59 months Female	Vitamin A (Prevention) 6-11 months Male	Vitamin A (Prevention) 6-11 months Female	Vitamin A (Prevention) Post-Partum	Vitamin A (Prevention) Post-Partum
Central River	12361	11944	3581	3349	0	9433
Lower River	5298	5206	1330	1143	0	3352
North Bank East	10631	10814	1868	1840	0	4772
North Bank West	8988	9000	1896	1725	0	3290

Upper River	15634	15589	3787	3860	0	8407
Western 1	17372	17104	10141	9100	547	15575
Western 2	8659	8018	3918	3551	589	9055
National	78943	77675	26521	24568	1136	53884

Source: HMIS, 2018

Table 200: Number of Vitamin A Doses (Treatment) and Yellow Fever Administered by Regions in 2018.

	Vitamin A (Treatment) 12-59 months Male	Vitamin A (Treatment) 12-59 months Female	Vitamin A (Treatment) 6-11 months Male	Vitamin A (Treatment) 6-11 months Female	Yellow Fever Male	Yellow Fever Female
Central River	0	0	0	0	4837	4667
Lower River	2	4	1	2	1672	1501
North Bank East	0	0	0	0	2258	2056
North Bank West	0	0	0	0	1934	1837
Upper River	600	660	29	25	4867	4774
Western 1	234	339	96	50	10389	9923
Western 2	2	1	131	28	4222	3616
National	838	1004	257	105	30179	28374

Source: HMIS, 2018

INSPECTION

Table 201: Number of Inspection conducted by Regions in 2018.

	Inspection building plans inspected	Inspection hotels and boarding houses	Inspection public conveniences	Senior secondary schools
Central River	2	13	26	67
Lower River	1	7	4	23
North Bank East	3	1	10	37
North Bank West	0	3	1	26
Upper River	3	2	0	54
Western 1	0	1	2	22

Western 2	0	0	0	16
National	9	27	43	245

Source: HMIS, 2018

VILLAGE HEALTH SERVICES

Table 202: Number of Deliveries by the CBC Reported by Regions in 2018.

	Live Births Attended Male	Live Births Attended Female	Other Live Births Attended Male	Other Live Births Attended Female	Stillbirths Attended Male	Stillbirths Attended Female	Other stillbirths attended Male	Other stillbirths attended Female
Central River	243	276	214	240	3	0	4	3
Lower River	83	107	118	164	2	4	2	2
North Bank East	41	56	5	2	1	2	1	2
North Bank West	147	155	647	625	3	2	5	6
Upper River	317	365	468	529	2	3	4	1
Western 1	83	91	106	86	3	0	0	1
Western 2	90	133	47	75	0	0	1	1
National	1004	1183	1605	1721	14	11	17	16

Source: HMIS, 2018

Table 203: Number of Family Planning Services by the CBC Reported by Regions in 2018.

	Motivations Given Male	Motivations Given Female	Cycles of Pills Issued Female	Women Given pills
Central River	43	342	158	106
Lower River	21	401	191	100
North Bank East	57	443	0	
North Bank West	43	210	53	25
Upper River	29	742	1232	532
Western 1	23	84	852	295
Western 2	13	51	608	191
National	229	2273	3094	1249

Source: HMIS, 2018

Table 204: Number of Deaths by the CBC Reported by Regions in 2018.

	Maternal Deaths	Infant Deaths Male	Infant Deaths Female
Central River	2	0	0
Lower River	1	0	0
North Bank East	1	0	0
North Bank West	2	0	1
Upper River	1	0	3
Western 1	0	0	0
Western 2	1	0	0
National	8	0	4

Source: HMIS, 2018

Table 205: Number of Neonatal conjunctivitis Reported by Regions in 2018.

	Male	Female
Central River	1	1
Lower River	1	4
North Bank East	1	0
North Bank West	2	8
Upper River	2	3
Western 1	3	1
Western 2	1	0
National	11	17

Source: HMIS, 2018

Table 206: Number of CBC Postnatal Visits and Referrals Reported by Regions in 2018.

	Postnatal visits	Family Planning Male	Family Planning Female	Health Facility Male	Health Facility Female
Central River	13181	18	305	401	1919
Lower River	7111	8	149	385	751
North Bank East	10026	28	135	99	1117
North Bank West	14367	23	172	96	1460
Upper River	16713	20	650	144	1241
Western 1	901	23	56	175	209
Western 2	3811	2	50	72	207
National	66110	122	1517	1372	6904

Source: HMIS, 2018

Table 207: Number of VHW Uncomplicated Malaria Confirmed with RDT Reported by Regions in 2018.

	Male < 5 years	Male > 5 years	Female < 5 years	Female > 5 years	Pregnancy
Central River	40	151	42	118	0
Lower River	0	43		9	0
North Bank East	8	21	10	16	0
North Bank West	28	21	24	14	0
Upper River	304	1702	273	1493	0
Western 1	0	0	0	0	0
Western 2	0	0	0	0	0
National	380	1938	349	1650	0

Source: HMIS, 2018

Table 208: Number of VHW Suspected Measles Reported by Regions in 2018.

	Male < 5 years	Male > 5 years	Female < 5 years	Female > 5 years
Central River	3	24	3	13
Lower River	0	3	2	1
North Bank East	2	6		5
North Bank West	3	7	13	9
Upper River	1	0	2	0
Western 1	0	0	0	0
Western 2	16	15	15	17
National	25	55	35	45

Source: HMIS, 2018

Table 209: Number of VHW Pneumonia Reported by Regions in 2018.

	Male < 5 years	Male > 5 years	Female < 5 years	Female > 5 years
Central River		237		213
Lower River	16	7	18	10
North Bank East	9	68	9	61

North Bank West	236	34	183	35
Upper River		319	3	259
Western 1	1	16		13
Western 2	21	29	24	18
National	283	710	237	609

Source: HMIS, 2018

Table 210: Number of VHW Fast Breathing Reported by Regions in 2018.

	Male < 5 years	Male > 5 years	Female < 5 years	Female > 5 years
Central River	401	0	388	0
Lower River	87	5	90	6
North Bank East	96	4	88	2
North Bank West	588	17	538	19
Upper River	343	9	314	6
Western 1	16	0	14	0
Western 2	75	2	77	6
National	1606	37	1509	39

Source: HMIS, 2018

Table 211: Number of VHW Diarrhoea Reported by Regions in 2018.

	Male < 5 years	Male > 5 years	Female < 5 years	Female > 5 years
Central River	908	448	822	440
Lower River	470	250	455	262
North Bank East	435	259	399	243
North Bank West	1318	929	1227	947
Upper River	1394	692	980	651
Western 1	56	75	57	50
Western 2	81	53	82	55
National	4662	2706	4022	2648

Source: HMIS, 2018

Table 212: Number of VHW Presumptive TB Cases Reported by Regions in 2018.

	Male < 5 years	Male > 5 years	Female < 5 years	Female > 5 years
Central River	5	54	7	17
Lower River	4	46	4	28

North Bank East		11		7
North Bank West	8	12	5	8
Upper River	1	29	1	21
Western 1	10	23	4	10
Western 2	11	54	8	26
National	39	229	29	117

Source: HMIS, 2018

Table 213: Number of VHS Deaths Reported by Regions in 2018.

	Male < 5 years	Male > 5 years	Female < 5 years	Female > 5 years	Infant Male	Infant Female
Central River	13	91	11	62	5	2
Lower River	13	86	8	84	3	6
North Bank East	15	67	9	52	9	5
North Bank West	15	75	14	86	16	1
Upper River	10	90	16	77	7	5
Western 1	2	29	1	15	1	
Western 2	6	70	13	89	0	7
National	74	508	72	465	41	26

Source: HMIS, 2018

Table 214: Number of VHS Referrals Reported by Regions in 2018.

	Neonates Male	Neonates Female	Male < 5 years	Male > 5 years	Female < 5 years	Female > 5 years
Central River	0	0	1829	1659	1635	1855
Lower River	0	0	1467	1296	1410	1383
North Bank East	0	0	1389	1171	1283	1155
North Bank West	0	0	1133	1026	1098	1055
Upper River	0	0	1870	1899	1820	1887
Western 1	0	0	139	147	115	118
Western 2	0	0	261	214	357	267
National	0	0	8088	7412	7718	7720

Source: HMIS, 2018

Table 215: Number of VHW RDT Use Positive Reported by Regions in 2018.

	Male < 5 years	Male > 5 years	Female < 5 years	Female > 5 years
Central River	35	135	41	112
Lower River	7	56	8	21
North Bank East	12	19	11	16
North Bank West	20	32	24	22
Upper River	294	1683	264	1482
Western 1	0	0	0	0
Western 2	0	0	0	0
National	368	1925	348	1653

Source: HMIS, 2018

Table 216: Number of VHW RDT Use Negative Reported by Regions in 2018.

	Male < 5 years	Male > 5 years	Female < 5 years	Female > 5 years
Central River	139	360	135	287
Lower River	1	44		47
North Bank East	355	404	295	366
North Bank West	182	149	159	135
Upper River	1039	2338	978	2250
Western 1	0	0	0	0
Western 2	0	0	0	0
National	1716	3295	1567	3085

Source: HMIS, 2018

Table 217: Number of VHW RDT Use Invalid Reported by Regions in 2018.

	Male < 5 years	Male > 5 years	Female < 5 years	Female > 5 years
Central River	8	10	3	10
Lower River				
North Bank East	5	7	2	5
North Bank West	5	2	5	8
Upper River	6	20	6	14
Western 1	0	0	0	0
Western 2	0	0	0	0
National	24	39	16	37

Source: HMIS, 2018

Table 218: Number of VHW Coartem 6 Tab Doses Reported by Regions in 2018.

	Male < 5 years	Male > 5 years	Female < 5 years	Female > 5 years
Central River	17	0	17	0
Lower River	1	0	1	0
North Bank East	4	0	7	3
North Bank West	5	0	8	0
Upper River	190	0	177	0
Western 1	0	0	0	0
Western 2	0	0	0	0
National	217	0	210	3

Source: HMIS, 2018

Table 219: Number of VHW Coartem Reported by Regions in 2018.

	12 Tab Doses Male > 5 years	12 Tab Doses Female > 5 years	18 Tab Doses Male > 5 years	18 Tab Doses Female > 5 years	24 Tab Doses Male > 5 years	24 Tab Doses Female > 5 years
Central River	16	17	47	26	94	68
Lower River	6		20	7	34	2
North Bank East	3	4	3	1	13	9
North Bank West	4	3	3	2	18	11
Upper River	328	285	445	376	903	797
Western 1	0	0	0	0	0	0
Western 2	0	0	0	0	0	0
National	357	309	518	412	1062	887

Source: HMIS, 2018

Table 220: Number of CHN Activities Reported by Regions in 2018.

	At Risk Children Visited	Community Meetings Attended	Mothers with Identified Problem Visited	Others (Include all SBCC activities)	RCH Clinics Attended
Central River	1268	687	394	1252	1168
Lower River	553	386	48	681	603
North Bank East	381	226	26	384	430
North Bank West	563	394	52	302	567
Upper River	873	438	238	237	722
Western 1	42	3	7	0	132

Western 2	580	99	59	170	454
National	4260	2233	824	3026	4076

Source: HMIS, 2018

Table 221: Number of Malnutrition Patients Reported by Regions in 2018.

	SAM Patients Treated According to the Protocol	Severe Acute Malnutrition	Severe Malnutrition with Anaemia	Severe Malnutrition with other Medical Complications	Moderate Acute Malnutrition
Central River	0	0	0	0	0
Lower River	0	0	0	0	0
North Bank East	0	0	0	0	0
North Bank West	0	0	0	0	0
Upper River	0	0	0	0	0
Western 1	0	0	0	0	0
Western 2	0	0	0	0	0
National	0	0	0	0	0

Source: HMIS, 2018

Table 222: Number of CHN Activities Reported by Regions in 2018.

	Supervisory visits	TB Patients Receiving DOTS in the village
Central River	3334	119
Lower River	2200	139
North Bank East	1919	13
North Bank West	1803	86
Upper River	1709	66
Western 1	373	140
Western 2	1560	365
National	12898	928

Source: HMIS, 2018

FAMILY PLANNING SERVICES

Table 223: Number of People Seen and Counsellled for Family Planning Services Reported by Regions in 2018.

	Counsellled only	Total men seen	Total women seen
Central River	5044	2751	12708
Lower River	1089	1456	4977
North Bank East	1335	1795	10838
North Bank West	3663	633	5655
Upper River	3136	3220	12250
Western 1	18605	15303	48174
Western 2	12201	8912	19748
National	45073	34070	114350

Source: HMIS, 2018

Table 224: Number of Family Planning New Acceptors and Current Users Reported by Regions in 2018.

	Current Users	New Acceptors
Central River	9624	9998
Lower River	5761	2405
North Bank East	6769	6623
North Bank West	5559	3193
Upper River	15388	8332
Western 1	21096	16267
Western 2	14659	15321
National	78856	62139

Source: HMIS, 2018

FAMILY PLANNING METHODS

Table 225: Number of CBC Referrals Reported by Regions in 2018.

	Bilateral Tubal Ligation	Depo	Emergency Contraceptives (Norlevo)
Central River	25	10500	289
Lower River	0	3684	93
North Bank East	14	6997	41
North Bank West	0	4293	21
Upper River	10	7659	272
Western 1	6	20056	663
Western 2	9	11214	89
National	64	64403	1468

Source: HMIS, 2018

Table 226: Number of Foam, IUCD, Implanon, Jadelle Implant and Male Condom Methods Reported by Regions in 2018.

	Foam	IUCD	Implanon	Jadelle Implant	Male Condom
Central River	0	10	1974	69	3909
Lower River	0	3	508	69	1371
North Bank East	0	183	2090	424	1796
North Bank West	0	25	503	190	879
Upper River	0	18	2923	97	3251
Western 1	0	374	3106	1575	17278
Western 2	0	149	2196	417	11436
National	0	762	13300	2841	39920

Source: HMIS, 2018

Table 227: Number of Pill Methods Reported by Regions in 2018.

	Marvelon	Microgynon	Microlut	Neogynon	Norigynon	Noristat	Other
Central River	466	2009	175	343	0	101	0
Lower River	2	540	167	1	0	0	44
North Bank East	0	1470	148	132	0	62	0
North Bank West	6	924	356	21	109	96	0
Upper River	0	1924	8	14	0	26	0
Western 1	92	11905	2513	3906	335	4490	363
Western 2	5	5399	341	301	15	464	85

National	571	24171	3708	4718	459	5239	492
-----------------	------------	--------------	-------------	-------------	------------	-------------	------------

Source: HMIS, 2018

Table 228: Number of Clients and Condoms Issued through the VHS Reported by Regions in 2018.

	Clients Given Condoms Male	Clients Given Condoms Female	Condoms Issued Male	Condoms Issued Female
Central River	1653	28	7005	104
Lower River	1418	121	7300	70
North Bank East	326	37	1263	10
North Bank West	649	25	2554	38
Upper River	1899	22	7079	73
Western 1	1644	6	8830	0
Western 2	543	42	2894	243
National	8132	281	36925	538

Source: HMIS, 2018

REGISTRATION OF BIRTHS and DEATHS

Table 229: Number of Early Registration of Births Reported by Regions in 2018.

	0-3 months Male	0-3 months Female	4-11 months Male	4-11 months Female
Central River	680	623	1043	1027
Lower River	456	415	484	465
North Bank East	509	501	594	551
North Bank West	397	387	395	413
Upper River	784	718	1122	958
Western 1	1636	1463	1472	1360
Western 2	2829	2669	415	443
National	7291	6776	5525	5217

Source: HMIS, 2018

Table 230: Number of Late Registration of Births Reported by Regions in 2018.

	1-5 years Male	1-5 years Female	>5 years Male	> 5 years Female
Central River	2467	2358	2849	2505
Lower River	844	790	1123	1070
North Bank East	761	673	1145	1083
North Bank West	865	732	1835	1440
Upper River	1781	1703	1633	1111
Western 1	3248	3184	11001	8185
Western 2	1005	992	2072	1583
National	10971	10432	21658	16977

Table 30: Source: HMIS, 2018

Table 231: Number of Foetus and Neonatal Deaths Registration Reported by Regions in 2018.

	Neonatal Male	Neonatal Female	Foetus Male	Foetus Female
Central River	0	0	0	0
Lower River	0	0	0	0
North Bank East	44	26	0	0
North Bank West	0	0	0	0
Upper River	0	0	0	0
Western 1	0	0	0	0
Western 2	0	0	54	56
National	44	26	54	56

Source: HMIS, 2018

Table 232: Number of Child Deaths Registration Reported by Regions in 2018.

	< 1 years Male	< 1 years Female	1-5 years Male	1-5 years Female
Central River	0	0	0	0
Lower River	0	0	1	0
North Bank East	9	4	15	10
North Bank West	0	0	0	0
Upper River	0	0	0	0
Western 1	1	1	3	5
Western 2	2	4	2	3
National	12	9	21	18

Source: HMIS, 2018

Table 233: Number of Deaths More than Five Years Old Reported by Regions in 2018.

	6-14 years Male	6-14 years Female	> 14 years Male	>14 years Female
Central River	1	0	12	9
Lower River	0	0	5	5
North Bank East	5	4	64	61
North Bank West	1	0	12	3
Upper River	2	2	1	2
Western 1	9	18	76	33
Western 2	6	4	65	47
National	24	28	235	160

Source: HMIS, 2018

INSTITUTIONAL DEATHS REPORTED

Table 234: Brought In Deaths reported by Regions in 2018.

	Maternal Brought in Dead	Brought in Dead Male	Brought in Dead Female
Central River	2	33	20
Lower River	0	12	4
North Bank East	0	7	2
North Bank West	0	9	5
Upper River	2	14	13
Western 1	6	395	337
Western 2	2	22	19
National	12	492	400

Source: HMIS, 2018

Table 235: Deaths On Arrival reported by Regions in 2018.

	Maternal Death on Arrival	Deaths on Arrival Male	Deaths on Arrival Female
Central River	2	6	6
Lower River	1	1	2

North Bank East	0	1	0
North Bank West	0	2	1
Upper River	0	6	4
Western 1	0	35	20
Western 2	0	1	0
National	3	52	33

Source: HMIS, 2018

Table 236: Deaths at the Health Facilities Reported by Regions in 2018.

	Infant Male	Infant Female	Maternal	Neonatal Male	Neonatal Female
Central River	13	10	9	70	60
Lower River	0	0	0	1	0
North Bank East	4	2	13	43	27
North Bank West	5	4	1	6	4
Upper River	11	8	14	18	4
Western 1	17	18	17	65	55
Western 2	0	1	1	15	14
National	50	43	55	218	164

Source: HMIS, 2018

Table 237: Child and Adult Deaths at the Health Facilities Reported by Regions in 2018.

	5-14 years Male	5-14 years Female	< 5 years Male	< 5 years Female	Over 14 years Male	Over 14 years Female
Central River	5	5	29	29	54	69
Lower River	1	2	0	7	3	4
North Bank East	5	5	16	12	61	49
North Bank West	3	1	5	4	31	15
Upper River	9	5	16	20	24	27
Western 1	18	13	163	152	233	203
Western 2	3	3	8	5	46	50
National	44	34	237	229	452	417

Source: HMIS, 2018