



MINISTRY OF HEALTH & SOCIAL WELFARE

SERVICE STATISTICS REPORT 2013



3/10/2014
HEALTH MANAGEMENT INFORMATION SYSTEM
HMIS

FOREWORD

The Ministry of Health and Social welfare together with its partners and other health agencies is responsible for the provision of health care service delivery to the people of The Gambia. This involves the planning, implementation, monitoring and performance assessment of health programme and services. In order to fulfill this role there is the need for accurate and timely information on the health status and health service in The Gambia

The production of the ministry of health and Social Welfare, Health Service Statistics, 2013 is a reference on performance of Health Sector as an information tool for policy makers, health service/programme managers, health partners, stakeholders, researchers and students.

This information collated is mainly summaries from public, Private NGO and community health facilities. The ministry of Health and Social welfare acknowledges the significant roles of other agencies such as the UN system, development partners, research institutions and the Gambia bureau of Statistics in the provision of health related statistics to the general public. Some of such statistics have been quoted in this publication and duly acknowledged.

The National Health Management Information System of the Ministry of Health is the focal unit responsible for collection, analysis, reporting and presentation of health service information in the ministry.

Ministry of Health

Tables of Content

Foreword-----	2
List of Tables-----	4-8
List of Figures-----	4-8
Acronyms-----	9
Introduction -----	10
Health Infrastructure -----	11
Health Facility by type and ownership-----	11
Beds in Public Health Facilities-----	12
Demography-----	14
Health - related Millennium Development goals-----	15
Human resources-----	16
Completeness and Timeliness of Returns-----	18
Health Service outputs-----	20
Clinic attendance -----	21
Infant welfare clinic Attendance-----	22
Out Patient Cases-----	23
Maternal Condition-----	27
Eye Conditions-----	30
Non Communicable Diseases-----	32
Oral Disorders & Inpatient Admission-----	36
Death Reported by Facility -----	45
Births Registration-----	50
Reproductive Health services-----	52
Public Inspections & Immunization -----	77
Village health Service-----	83
Drug Consumption-----	90

LIST OF TABLES

Table 1:	Number and type of Health Facility by Region-----	10
Figure 1	Distribution of health facility by type, 2013.....	11
Table 2:	Number of Beds in Public Health Facilities by Region.....	12
Table 3:	Number of Beds in Public Health Facilities by Facilities category.....	12
Table 4	Hospital Bed Utilization statistics.....	13
Table 5	National target population by region-2013.....	13
Table 6	Demographic and Socioeconomic indicators.....	14
Table 7	Health Status Indicators.....	14
Table 8	Health - Related Millennium Development Goals.....	15
Table 9:	Distribution of Public Health Professionals by Region.....	16
Table 10:	Proportion of Health work force per 10,000 Population by Region.....	16
Table 11:	Health Facility Monthly Returns-----	17
Table 12:	Health Facility Quarterly Returns-----	18
Table 13:	Village Health Services Monthly Summary Form-----	18
Table 14:	PHC Family Planning Quarterly Returns-----	19
Table 15:	Number of Outpatient Attendance by Region-----	19
Table 16:	Percentage of Outpatient Attendance by Gender-----	20
Table 17:	Number of Infant Welfare Clinic Attendance by Region-----	21
Table 18:	Outpatient Attendance Utilization by Region-----	22
Table 19:	Number of Uncomplicated Confirmed Malaria by Region-----	23
Table 20:	Number of Sexually Transmitted Infection Reported by Region-----	23
Table 21:	Number of INMCI priority conditions by Region-----	24
Table 22:	Number of INMCI priority conditions by Region-----	24
Table 23:	Number of INMCI priority conditions by Region-----	25
Table 24:	Number of INMCI priority conditions by Region-----	25
Figure 2:	Number of Maternal Conditions by Region-----	
Table 25	Number of Diseases reported on >5 years by Region-2013-----	27
Table 26:	Number Diseases Reported on >5 years by Region-----	28
Table 27:	Number Diseases Reported on >5 years by Region-----	28
Table 28:	Number of Eye Conditions by Region-----	29
Table 29:	Number of Eye Conditions by Region-----	29
Table 30:	Major Conditions by Region-----	31
Table 31:	Major Conditions by Region-----	32
Table 32:	Number of Accidents Cases by Region-----	32
Table 33:	Number of Accidents Cases by Region-----	33
Table 34:	Number of Accidents Cases by Region-----	33
Table 35:	Number of Mental Disorder by Region-----	34
Table 36:	Number of Mental Disorder by Region-----	34

Table 37:	Number of Oral Disorder Cases by Region-----	35
Table 38:	Number of Inpatient Admission by Region-----	35
Table 39:	Number of Admission due Severe Confirmed Malaria by Region-----	36
Table 40:	Number of Admission due to Sexually transmitted Diseases by region-----	36
Table 41:	Number of Admission due to INMCI priority conditions by Region-----	37
Table 42:	Number of Admission due to INMCI priority conditions by Region-----	37
Table 43:	Number of Admission due to Maternal Conditions by Region-----	38
Table 44:	Number of Admission due to Diseases Reported on ≥5years by Region-----	38
Table 45:	Number of Admission due to Diseases Reported on ≥5years by Region-----	39
Table 46	Number of Admission due to Eye Conditions by Region-----	40
Table 47	Number of Admission due to NCD cases by Region-----	40
Table 48:	Number of Admission due to NCD Cases by Region-----	41
Table 49	Number of Admission due to Accident cases by Region-----	41
Table 50:	Number of Admission due to Accident Cases by Region-----	42
Table 51:	Number of Admission due to mental disorders by Region-----	42
Table 52:	Number of Admission due to Oral Disorder by region	42
Table 53:	Total number of Deaths reported by Health facilities – 2013	43
Table 54	Deaths on arrival at Health facilities-----	44
Table 55:	Number of Deaths due to Accident Cases by Region-----	44
Table 56:	Number of Deaths due to Non Communicable Diseases Cases by Region----	45
Table 57	Number of Deaths due to maternal conditions by Region – 2013-----	45
Table 58	Number of Deaths due to some disease condition of special focus among children under five years (IMNCI) by Region – 2013-----	46
Table 59	Number of Deaths due to Sexually Transmitted Diseases by Region – 2013-	46
Table 60:	Deaths on Arrival at health Facilities-----	47
Table 61:	Number of Deaths due to Severe confirmed Malaria by Region-----	47
Table 62	Number of Deaths due to Sexually Transmitted Diseases by Region-----	48
Table 63	Number of Birth Registration by Region- (Gambian Parents) – 2013-----	48
Table 64	Number of Birth Registration by Region (Non Gambian Parents) -2013-----	49
Table 65	Number of Birth Registration by Region- (Births Outside Gambia) – 2013---	49
Figure 3:	Number of IPT1&2 Doses Administered Compared to total New Ante Natal Registered by Region-----	
Table 66	Number on Ante Natal clinics attendance by region-----	50
Table 67	Number of RCH clinics scheduled, held and cancelled by region-----	51
Table 68	Percentage of RCH clinics conducted and cancelled by region-----	52
Figure 4	First ante natal attendance less than or equal to 15 years of age-----	
Table 69:	Number of Deliveries Conducted at Health Facilities by Region-----	52
Table 70:	Percentage of Institutional Deliveries, Deliveries Conducted by Midwives and Deliveries outcome by Region-----	54
Table 71:	Number of Deliveries Conducted at the Village Health Services by Region--	54
Table 72:	Number of Clients Counseled For Family Planning Services by region-----	55
Table 73	Number of New Family Planning Services Acceptors by Method-----	55

Table 74	Number of New Family Planning Services Acceptors by Method-----	56
Table 75	Number of New Family Planning Services Acceptors by Method-----	56
Figure 4	Distribution of contraceptive methods by users (New Acceptors) in 2013.--	
Table 76	Number of Family Planning Services Revisit by Method-----	57
Table 77:	Number of family Planning Services Revisit by method-----:	58
Table 78:	Number of Family Planning Services Revisit by Method	
Table 79:	Number of Post Natal care Conditions Reported by Region-----	58
Table 80:	Number of Post Natal care Conditions Reported by Region-----	59
Table 81	Number of Postnatal Care conditions reported by Region -2013	60
Table 82:	Obstetric/ Labour and Deliveries-----	61
Table 83	Percentage of Obstetric/ Labour and Deliveries Care conditions-----	61
Table 84:	Total Number of Referrals From Health facilities by Gender-----	62
Table 85	Percentage of referrals by gender in – 2013-----	62
Figure 5 :	Percentage of Referrals by Gender-----	
Table 86:	TB Case Notification by Quarter and Type-----	63
Figure 6:	Trend of TB Case Notification from 2006 to 2012-----	
Figure 7:	TB Treatment Success Rate 2005 to 2012-----	
Table 87	Total case-notification all forms of tuberculosis NLTP by region-2013—----	65
Table 88	Number of HIV Counseling and Testing by region -2013-----	67
Table 89	Number of OPPORTUNISTIC INFECTIONS (OIs) AND ART -2013	67
Table 90	Number of prevention of mother-to-child transmission (PMTCT) by region - 2013	68
Table 91	Number of Laboratory Test conducted in Central River Region-2013-----	68
Table 92	Number of Laboratory Test conducted in North Bank East Region -2013---	69
Table 93:	Number of laboratory Test Conducted in North Bank West Region-----	70
Table 94:	Number of Laboratory Test conducted in Lower River Region-2013-----	72
Table 95:	Number of Laboratory Test conducted in Western Health Region2-2013----	72
Table 96:	Number of Laboratory Test conducted in Western Health Region1-2013----	72
Table 97:	Number of laboratory Test conducted in Upper River Region-----73	
Figure 8:	Actual Coverage by Region Comparing Antigens given at Birth or Soon After to Antigens given at Nine Months-----	
Table 98	Number of meat inspections -2013-----	74
Table 99	Number of Complaints by Region-----	75
Table 100	Number of Doses of Vaccines administered by region in 2013-----	76
Table 101:	Number of Doses of Vaccines administered by Region-----	76
Table 102:	Number of Doses of Vaccines Administered by Region-----	77
Table 103	Number of doses of Antigen consumed by region – 2013-----	78
Table 104:	Percentage of Antigens Coverage in 2013-----	79
Table 105:	Number of Doses of Vitamin A. Administered by Region-----	79
Table 106:	Total Number of Patients seen by the Village Health Workers Per Region--	80

Table 107:	Number of Suspected Measles Reported by the Village Health Workers by Region-----	80
Table 108:	Number of fast Breathing Reported by the Village Health Workers by Region-----	81
Table 109:	Number of Diarrhoea cases Reported by the Village Health Workers by Region-----	81
Table 110:	Number of Uncomplicated Malaria Confirmed with RTD Reported by the Village Health Worker-----	82
Table 111:	Number of Pregnant Women with Uncomplicated Malaria Confirmed with RTD Reported by the Village Health Workers-----	82
Table 112:	Condon Consumption at the Village Health Service	83
Table 113:	Number of Referrals by Village Health Service to the Health Facilities	84
Table 114:	Number of Home Visits Conducted by the Village Health Service	84
Table 115:	Postpartum care services Conducted by the Traditional Birth Attendants	84
Table 116:	Family Planning Services Conducted by the Traditional Birth Attendants	85
Table 117:	Number of Referrals by the Traditional Birth Attendants to Health facilities	85
Table 118:	Number of Supervisory Visits and Clinical activities Conducted CHN	86
Table 119:	Number of Other Activities Conducted by the CHN	86
Table 120:	Number of At Risk Children Visited by the CHN	87
Table 121:	Number of TB Patients receiving DOTs in the Village Health Services	87
Table 122:	Number of Deaths Reported by the Village Health services	87
Table 123:	Consumption of Essential Medicines by Region	88
Table 124:	Consumption of Essential Medicines by Health Facility Type	89
Table 125	Top causes of Inpatient admissions-2013	90
Table 126:	Top 10 Causes of Outpatient Morbidity	91

LIST OF ACRONYMS

ANC -Ante Natal Care
CHN- Community Health Nurse
CRR -Central River Region
HIV- Human Immuno-deficiency Virus
HMIS- Health Management Information System
IMNCI- Integrated Management of Newborn Childhood Illness
LRR- Lower River Region
MICS- Multiple Indicator Cluster Survey
MMS- Maternal Mortality Survey
NBER -North bank East Region
NBWR- North bank West Region
NGO- Non Governmental Organization
PHC- Primary Health Care
PMTCT- Prevention of Mother TO Child Transmission
RCH- Reproductive and Child Health
RDT- Rapid Diagnostics Test
TBA- Traditional Births Attendant
URR- Upper River Region
VHS -Village Health Services
VHW -Village Health Worker
WHR -Western Health Region

INTRODUCTION

The Ministry of Health & Social Welfare developed the Gambia Annual Health Service Statistics report 2013 in order to provide an overview of key statistics in the health sector for 2013. This report is produced annually thereby enabling an analysis of trends over time.

This report is divided into chapters, namely infrastructure, Human resources, Morbidity, immunization, village health service and special programs. The Special program includes national data on family planning (FP), tuberculosis (TB), HIV & AIDS, malaria and Reproductive and child Health (RCH).

This report aims to show key statistics in the health sector in a concise, easily accessible manner to ensure that this valuable data is readily available in all interested parties. Comparisons with data from 2011 will help users to understand the evolving health situation in the Gambia.

This document includes data from primary health care facilities, health centres, private and NGO facilities, Community clinics and referral hospitals. No data is included from the teaching hospital which provides a more comprehensive picture on Gambia's infrastructure and disease burden.

Quarterly the HMIS unit goes on monitoring and supervisory visits to all the health facilities and regional health teams to verify and audit the data generated at the facility levels. During the monitoring visits, opportunities are taken to discuss with the health workers and the RHT on any issue that may affect the quality of the data. Following the aggregation of the data the HIS technical team will review it prior to the publication of the data in the HMIS quarterly bulletin for information sharing and dissemination with our development partners and all stakeholders.

CHAPTER 1

HEALTH INFRASTRUCTURE

1.1: Health Facility by Type and Ownership

The number of health services delivery points reported by Regional Health Management Teams (RHTs) in the Gambia at the end of 2013 was 1096 (see table 1). Of the 135 health facilities 34.81% are health centres, 5.19% hospitals, 17.04% private facilities and 29.63% are community clinics. There was no significant increase in the number of health centers. The overall increase in the number of services delivery points was primarily due to expansion of primary health care services and opening of new outreach Reproductive and Child Health (RCH) clinics. Most of the private health facilities in the country during the past years are mainly concentrated in urban areas.

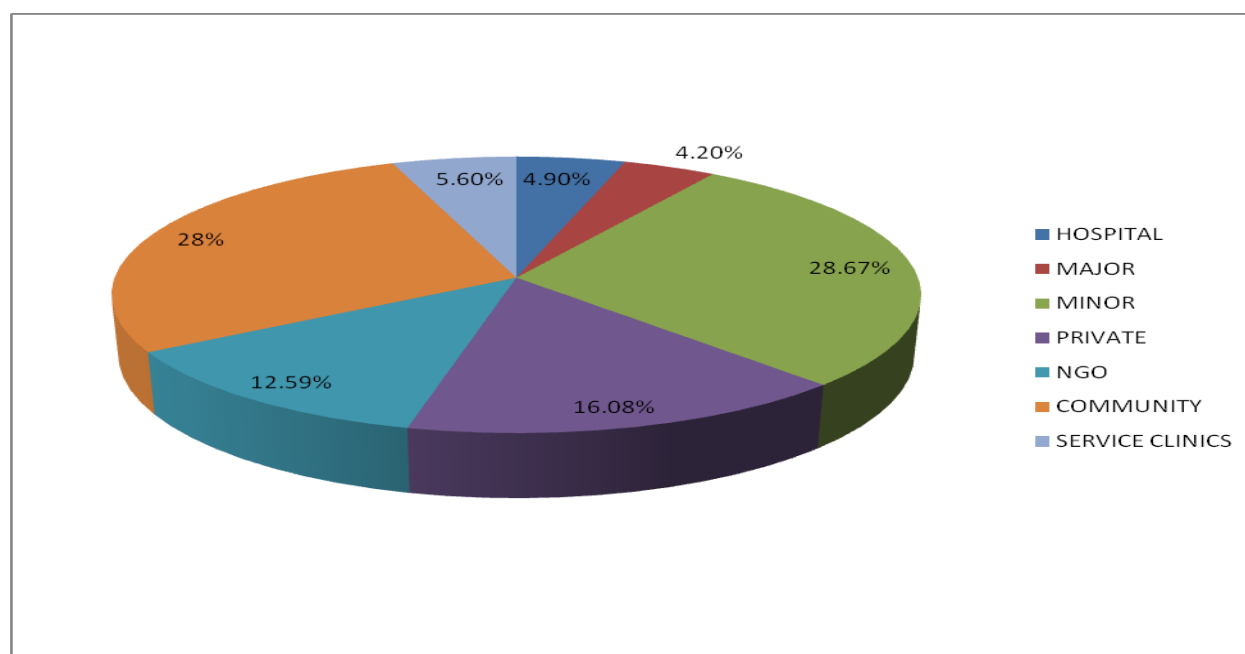
Table 1: Number and type of health facility by region, 2013

Health Facility Type	WHR1	WHR2	NBWR	NBER	LRR	CRR	URR	Total 2012
Hospitals	4	1	0	1	0	1	0	7
Major Health Centers	1	1	1	0	1	1	1	6
Minor Health Centers	5	4	4	6	5	7	10	41
NGO Facilities and Clinics	5	4	2	1	2	0	4	18
Private Health Facilities	6	9	0	0	1	2	5	23
Community Managed Facilities	7	9	6	5	4	8	1	40
Specialized RCH Clinics	2	0	0	1	0	1	0	4
RCH Outreach Clinics	13	24	32	31	34	62	61	257
RCH Base clinics sites	18	6	6	7	5	9	7	58
Total RCH clinic sites	31	30	38	38	39	71	68	315
PHC Key Villages	3	12	13	9	8	17	12	74

Total PHC Villages	26	92	100	95	92	159	70	634
Service Clinics	4	0	0	1	1	1	1	8
Total Service Delivery Points	91	150	151	148	145	251	160	1096

Source: Health facility Database, HMIS Unit, 2013

Figure 1: Distribution of health facility by type, 2013



Source: HMIS 2013

1.4: Beds in Public Health Facilities

The tables below show the number of beds in the labour, postnatal/antenatal and in-patient wards by region in 2013. During this year there was a total of 2023 beds in the public health facilities (hospitals, major and minor health centers) in the country (see table

Table 2: Number of beds in public health facilities by region

Region	Number of Beds by Region			
	Labour	Postnatal/Antenatal	Inpatients	Total
Western Health Region1	46	141	620	807
Western Health Region2	15	34	152	201
North bank West Region	11	21	51	83
north bank East Region	15	37	179	231
lower river Region	16	29	109	154

Central River Region	29	46	244	319
Upper River Region	26	41	161	228
Total	158	349	1516	2023

SOURCE: HMIS 2013

Table 3: Number of beds in public health facilities by category

Health Facility type	Labour	Postnatal/Antenatal	Inpatient	Total
Hospitals	43	155	898	1096
Major Health Centers	32	44	245	321
Minor Health Centers	88	161	354	603
Total	163	360	1497	2020

SOURCE: HMIS 2013

Table 4: Hospital Bed Utilization statistics

REGION	Population ration per 10,000	Turnover per Beds	Turnover per labour /maternity Bed
Central River Region	14.11	28.87	84.67
Lower River Region	18.7	22.87	38.38
North Bank East Region	20.82	16.87	58
North Bank West Region	7.54	37.94	88.03
Upper River Region	9.5	28.51	73.16
Western Region 1	10.64	13.58	113.58
Western Region 2	5.66	23.84	167.88
Total	10.75	20.51	95.1

SOURCE: HMIS 2013

CHAPTER 2

DEMOGRAPHY, VITAL STATISTICS AND HEALTH RELATED MILLENNIUM DEVELOPMENT GOALS (MDGs)

2.1: DEMOGRAPHY

Table 5: National target population by region-2013

Local government Area	Population
Central River Region	226018
Lower River Region	82,361
North Bank East Region	110,970
North Bank West Region	110,084
Upper River Region	239,916
Western Region 1	758,153
Western Region 2	354,948
Total	1,882,450

Census: 2013

Table 6: Demographic and Socioeconomic indicators

Indicators	Value
Population Density (Per Sq.km)	176
Population age structure (%) male	49.5
Population age structure (%) female	50.5
Proportion of population below 15 years of age (%)	12.58
Proportion of population above 60 years of age (%)	1.66
Proportion of population living in the urban areas (%)	50.4
Coverage of births registration (%)	53
Life expectancy at births(both sexes) (2003)	64
Net primary school enrolment ratio- Male (%) (2003)	63
Net primary school enrolment ratio -female (%) (2003)	61.9

2.4: VITAL STATISTICS

Table 7: Health Status Indicators

Indicator	2003	2013
Infant Mortality Rate (per, 1,000 live births)	75	34
Under five mortality rate (per 1,000 Live births)	99	54
Crude Births Rate (1000)	46	40.5
Crude Deaths Rate (1,000)	9	9.24
Life expectancy at births (in years)	64	63.4
Total fertility Rate	5.35	5.6

Census, 2003; GDHS, 2013

2.6: HEALTH - RELATED MILLENNIUM DEVELOPMENT GOALS

Table 8: Health - Related Millennium Development Goals

Indicator	value
Adolescent fertility rate (per 1,000 girls age 15-19 years)	118
Unmet need for family planning	21.50%
Prevalence of HIV among age 15 years to 24 years	1.94%
proportion of males age 15 to 24 with comprehensive correct knowledge of HIV&AIDS	97%
Children age less than 5 years sleeping under insecticide treated bed- nets	62.30%
Children age less than 5 years who receive any ant malarial treatment for malaria	78.50%

Access to improve drinking - water sources	85.80%
Access to improve sanitation	76.30%
Infants exclusively breast fed for first six months of life	47.00%
Alcohol consumption among adults 15 and above (liters per person per year)	2%
prevalence of tobacco use - male	31.30%
prevalence of tobacco use -female	1%

Source: Census 2003: BSS, 2005; MOH (WHO SWS), 2010; MIS 2010; MICs, 2010: GDHS, 2013

CHAPTER 3

HUMAN RESOURCE FOR HEALTH

3.1: HEALTH WORKERS

Table 9: Distribution of Public Health Professionals by Region

	WHR1	WHR2	NBWR	NBER	LRR	CRR	URR	TOTAL
Medical Officer	157	12	3	13	3	16	10	214
State Registered Midwives	48	18	2	4	2	9	3	86
State Registered Nurse	111	31	4	9	5	3	6	169
State Enrolled Midwives	48	20	8	12	7	9	12	116
State Enrolled Nurse	78	24	10	15	12	13	6	158
Community Health Midwives	45	21	10	6	11	14	17	124
Community Health Nurse	25	31	27	23	20	25	37	188
Public Health Officer	39	15	14	15	12	19	18	132
Lab Technologist	5	0	0	0	0	0	0	5
Lab Technicians	15	4	2	1	1	0	0	23
Dispensing Assistant/Pharmacy Assistant	45	10	2	22	2	5	2	88
Lab Assistant	41	16	2	25	2	8	9	103
Pharmacist	0	0	0	0	0	0	0	0
Pharmacy Technician	5	0	0	0	0	0	0	5
Dentist	2	0	0	0	0	1	0	3
Dental Technician	3	1	0	0	0	0	0	4
Dental Assistant	11	3	0	3	0	2	0	19
Radiology Technician	1	0	0	0	0	0	0	1
Radiology Assistant	10	0	0	5	0	1	0	16
Physiotherapy Assistant	2	2	0	0	0	0	0	4
SEN Ophthalmic	2	3	0	0	1	2	1	9
CHN Ophthalmic	5	1	1	0	0	0	2	9
Leprosy / Tuberculosis Inspector	14	4	3	1	5	5	7	39
ICT officer/Support Technicians	11	0	1	1	1	1	1	16
Data Entry Clerks	28	16	2	2	1	2	2	53
Global fund Data Entry Clerks	17	9	4	5	5	6	6	52
Nurse Attendants	268	71	31	129	25	26	24	574
Orderlies	64	19	34	25	46	35	63	286

Laundress	6	4	7	6	5	6	22	56
Village Health Workers	26	92	100	95	92	159	70	634
Traditional Birth Attendants	26	92	100	95	92	159	70	634
Total Midwives	141	59	20	22	20	32	32	326
Total Nurses	214	86	41	47	37	41	49	515

SOURCE: HMIS 2013

NB: Medical Officers include all categories of medical Doctors, all of which are found in the Hospital setting. Although this position also exists at Major health centre, there are still not occupied. TBAs and VHWs are mentioned here due to their contribution towards health care services.

Table 10: Proportion of health work force per 10, 000 Population by Region

	WHR1	WHR2	NBWR	NBER	LRR	CRR	URR	NATIONAL
Medical Officer	2.1	0.3	0.3	1.2	0.	0.7	0.4	1.1
State Registered Midwives	0.6	0.5	0.2	0.4	0.2	0.4	0.1	0.5
State Registered Nurse	1.5	0.9	0.4	0.8	0.6	0.1	0.3	0.9
State Enrolled Midwives	0.6	0.6	0.7	1.1	0.8	0.4	0.5	0.6
State Enrolled Nurse	1.0	0.7	0.9	1.4	1.5	0.6	0.3	0.8
Community Health Midwives	0.6	0.6	0.9	0.5	1.3	0.6	0.7	0.7
Community Health Nurse	0.3	0.9	2.5	2.1	2.4	1.1	1.5	1.0
Public Health Officer	0.5	0.4	1.3	1.4	1.5	0.8	0.8	0.7
Lab Technologist	0.1	0.0	0.0	0.0	0.0	0.0	0.0	0.1
Lab Technicians	0.2	0.1	0.2	0.1	0.1	0.0	0.0	0.1
Dispensing Assistant/Pharmacy Assistant	0.3	0.3	0.2	2.0	0.2	0.2	0.1	0.4
Lab Assistant	0.5	0.5	0.2	2.3	0.2	0.4	0.4	0.5
Pharmacist	0.0	0.0	0.0	0.0	0.0	0.0	0.0	0.0
Pharmacy Technician	0.0	0.0	0.0	0.0	0.0	0.0	0.0	0.0
Pharmacy Assistant	0.2	0.0	0.0	0.0	0.0	0.0	0.0	0.1
Dentist	0.0	0.0	0.0	0.0	0.0	0.0	0.0	0.0
Dental Technician	0.0	0.0	0.0	0.0	0.0	0.0	0.0	0.0
Dental Assistant	0.1	0.1	0.0	0.3	0.0	0.1	0.0	0.1
Radiology Technician	0.0	0.0	0.0	0.0	0.0	0.0	0.0	0.0
Radiology Assistant	0.0	0.0	0.0	0.0	0.0	0.0	0.0	0.0
Physiotherapy Assistant	0.0	0.1	0.0	0.0	0.0	0.0	0.0	0.0
SEN Ophthalmic	0.0	0.1	0.0	0.0	0.1	0.1	0.0	0.0
CHN Ophthalmic	0.1	0.0	0.1	0.0	0.0	0.0	0.1	0.0
Leprosy / Tuberculosis Inspector	0.1	0.1	0.2	0.1	0.6	0.2	0.2	0.2
ICT officer/Support Technicians	0.0	0.0	0.1	0.1	0.1	0.0	0.0	0.0
Data Entry Clerks	0.4	0.5	0.2	0.2	0.1	0.1	0.1	0.3
Nurse Attendants	3.5	2.0	2.8	11.6	3.0	1.2	1.0	3.0
Orderlies	0.8	0.5	3.1	2.3	5.6	1.5	2.6	1.5
Laundress	0.1	0.1	0.6	0.5	0.6	0.3	0.9	0.3

Village Health Workers	0.3	2.6	9.1	8.6	11.2	7.0	2.9	3.4
Traditional Birth Attendants	0.3	2.6	9.1	8.6	11.2	7.0	2.9	3.4
Total Midwives	1.7	1.4	1.8	2.0	2.4	1.4	1.3	1.7
Total Nurses	2.8	2.4	3.7	4.2	4.5	1.8	2.0	2.7

SOURCE: HMIS 2013

CHAPTER 4

MONTHLY AND QUARTERLY RETURNS

4.1: Completeness and Timeliness of Monthly and Quarterly Returns

Completeness and timeliness of returns from all the health facilities and Primary Health Care (PHC) villages is monitored by the National HMIS database. This is an in built system in the database, any time the data entry clerks at the RHTs complete punching a return for a particular reporting facility the system marks it as complete. However, the database also indicates if that particular return was punched on time that is by 10th of the monthly and quarterly return of the following month to indicate the timeliness of the report. The number of monthly and quarterly returns expected from both health facilities including private and PHC villages in 2013 was 9200, 1680 for health facility monthly returns, 552 for health facility quarterly returns, 6588 for village health services monthly summary form and 380 for PHC family planning quarterly return. On the other hand, 8275 returns were punched into the HMIS database out of the 9200 expected returns in 2013. However, while completeness of returns from the facilities is satisfactory, timeliness is still a big challenge.

Table 11: Health Facility monthly Returns

Name	Actual Reports	Expected Reports	Percent	Reports On Time	Percent On Time
Central River Region	248	252	98.4	130	51.6
Lower River Region	159	228	69.7	82	36
North Bank East Region	155	156	99.4	128	82.1
North Bank West Region	133	144	92.4	87	60.4
Upper River Region	168	168	100	104	61.9
Western Region 1	293	360	81.4	216	60
Western Region 2	271	372	72.8	105	28.2
Gambia	1427	1680	84.9	852	50.7

SOURCE: HMIS 2013

Table 12: Table: Health Facility Quarterly Returns

Name	Actual Reports	Expected Reports	Percent	Reports On Time	Percent On Time
Central River Region	81	84	96.4	49	58.3
Lower River Region	42	76	55.3	9	11.8
North Bank East Region	50	52	96.2	21	40.4
North Bank West Region	45	48	93.8	31	64.6
Upper River Region	56	56	100	14	25
Western Region 1	88	116	75.9	30	25.9
Western Region 2	59	120	49.2	8	6.7
Gambia	421	552	76.3	162	29.3

SOURCE: HMIS 2013

Table 13: Village Health Services Monthly Summary Form

Name	Actual Reports	Expected Reports	Percent	Reports On Time	Percent On Time
Central River Region	1049	1068	98.2	515	48.2
Lower River Region	816	840	97.1	437	52
North Bank East Region	1099	1140	96.4	890	78.1
North Bank West Region	896	948	94.5	324	34.2
Upper River Region	1152	1164	99	626	53.8
Western Region 1	256	276	92.8	197	71.4
Western Region 2	923	1152	80.1	193	16.8
Gambia	6191	6588	94	3182	48.3

SOURCE: HMIS 2013

Table 14: Table: PHC Family Planning Quarterly Return

Name	Actual Reports	Expected Reports	Percent	Reports On Time	Percent On Time
Central River Region	58	84	69	18	21.4
Lower River Region	28	32	87.5	8	25
North Bank East Region	32	60	53.3	10	16.7
North Bank West Region	31	44	70.5	9	20.5
Upper River Region	52	68	76.5	32	47.1
Western Region 1	10	16	62.5	4	25

Western Region 2	25	76	32.9	3	3.9
Gambia	236	380	62.1	84	22.1

SOURCE: HMIS 2013

The tables above on completeness and timeliness of returns indicate that VHS monthly reporting form has the highest reporting rate in 2013 representing about 94% (Table 8), health facility monthly returns 85%(Table), health facility quarterly return about 76% (Table) and VHS family planning quarterly return 62% (Table). In contrast timeliness of the returns was very low as indicated in the tables above.

CHAPTER 5

HEALTH SERVICE OUTPUTS

CLINIC ATTENDANCE

In 2013, the health facilities in the Gambia registered 1,866,641 OPD attendances, out of these 44.76% were male and 55.24% female (see Table 16 below). This data does not include some public hospitals and private clinics. Of the total attendances 33.32% were registered in the WHR 1, CRR 15.64%, URR 12.71 %, WHR 2 17.30% and the least with OPD attendance was NBWR with 5.80%. In terms of age variation, out of the total OPD attendance 50.71% were over 14 years of age, less than 5years and 5 to 14 were 27.15% and 22.14% respectively.

Table 15: Number of Outpatient Attendance by Region

REGION	<5 years of age		5-14 years of Age		>14 Years of Age		Total
	M	F	M	F	M	F	
Western Region 1	78060	76604	63244	69778	147787	186570	622043
Central River Region	43526	43043	27915	31260	55259	90910	291913
Western Region 2	39771	40682	44249	42166	65137	90864	322869
Upper River Region	36136	33970	24951	25932	42302	73956	237247
North Bank East Region	25184	24086	16207	15331	24266	47381	152455
Lower River Region	18515	19199	13869	14488	23497	42314	131882
North Bank West Region	14053	14027	11502	12396	20035	36219	108232
Total	255245	251611	201937	211351	378283	568214	1866641

SOURCE: HMIS 2013

Table 16: Percentage of Outpatient Attendance by gender

REGION	<5 years of age		5-14 years of age		>14 years of age		Total	
	M	F	M	F	M	F	M	F
Western Region 1	50.47%	49.53%	47.54%	52.46%	44.20%	55.80%	46.47%	53.53%
Central River Region	50.28%	49.72%	47.17%	52.83%	37.80%	62.20%	43.40%	56.60%
Western Region 2	49.43%	50.57%	51.21%	48.79%	41.75%	58.25%	46.20%	53.80%
Upper River Region	51.54%	48.46%	49.04%	50.96%	36.39%	63.61%	43.58%	56.42%
North Bank East Region	51.11%	48.89%	51.39%	48.61%	33.87%	66.13%	43.07%	56.93%
Lower River Region	49.09%	50.91%	48.91%	51.09%	35.70%	64.30%	42.37%	57.63%
North Bank West Region	50.05%	49.95%	48.13%	51.87%	35.62%	64.38%	42.12%	57.88%
Total	50.36%	49.64%	48.86%	51.14%	39.97%	60.03%	44.76%	55.24%

SOURCE: HMIS 2013

5.4: INFANT WELFARE SERVICES

Infant Welfare Services target children less than or equal to five years old. These services are provided monthly at the reproductive and child health services including the base and the outreach clinics. Children are registered in the first month of life and continue to receive services such as; growth monitoring, immunization treatment of minor ailments until aged 5 years.

Table 17: Number of Infant welfare Clinic Attendance by sex by region

REGION	New attendance <1 Male		All Other attendance		Total infant welfare clinic attendance
	M	F	M	F	
Central River Region	5626(49.92%)	5643(50.08%)	65143	66541	142953
Lower River Region	1959(49.16%)	2026(50.84%)	29383	30622	63990
North Bank East Region	1885(52.40%)	1712(47.60%)	39503	40632	83732
North Bank West Region	2174(50.25%)	2152(49.75%)	43643	44967	92936
Upper River Region	6184(49.98%)	6189(50.02%)	91100	90280	193753
Western Region 1	15581(50.86%)	15055(49.14%)	188139	183873	402648
Western Region 2	7052(35.98%)	12546(64.02)	86067	120598	226263

SOURCE: HMIS 2013

The table above shows infant welfare clinic attendance by region, sex, new attendance less than one year of age and, all other attendance. Out of the total new attendance less than one year of age 42.43% were male and 57.57% were female nationally. However, there was no significant variation between male and female in all the regions except in WHR 2 where male was 35.98% and female 64.02%.

6.1: OUT PATIENT CASES

6.2: Outpatient Attendance Utilization

The Out Patients Attendance rate is used to measure the functionality and utilization of the OPD services. An increase in the utilization rate would indicate a mark of confidence in the public health care system with a better health care delivery system. Outpatient services are open to all ages and are provided at all levels of service delivery in The Gambia.

Table 18: Outpatient Utilization by Region – 2013

Region	Average number of outpatient visits per person per year	Uncomplicated Malaria as Percentage of Outpatient Attendant	Utilization Rate of Outpatient Services
WHR1	1.5	18.92%	150.00%
NBWR	1.4	29.34 %	140%
NBER	1	16.86%	100%
LRR	1.6	7.80%	160.00%
CRR	1.3	10.62%	130.00%
WHR 2	0.46	18.60%	46.00%
URR	1	16.13%	100.00%
NATIONAL	1.29	8.82%	129%

SOURCE: HMIS 2013

The table above shows that the average number of outpatient visits per person in the Gambia in 2013 was 1.29, the utilization rate of outpatient services was 129% and uncomplicated malaria as percentage of outpatient attendance was 8.82%. However, there were regional variations; LRR has the highest average OPD visits per person of 1.60 and the highest utilization rate of OPD services of 160% but has the lowest cases of uncomplicated malaria as percentage of OPD attendance of 7.80%. NBWR registered the highest cases of uncomplicated malaria as percentage of OPD attendance of 29%. The rest of the regions have recorded slightly more than 10% of uncomplicated malaria as a percentage of OPD attendance.

UNCOMPLICATED CONFIRMED MALARIA

Table 19: Number of Uncomplicated confirmed Malaria by Region -2013

REGION	Uncomplicated confirmed Malaria < 5 years		Uncomplicated confirmed malaria => 5 years		Uncomplicated confirmed malaria in pregnancy	Total uncomplicated confirmed malaria (H/F&VHS)	
	M	F	M	F	F	M	F
Central River Region	3368	3338	10827	12297	395	14539	16449
Lower River Region	854	771	4531	3896	199	5414	4868
North Bank East Region	513	471	2869	2261	50	3471	2948
North Bank West Region	550	424	2113	1837	58	2787	2410
Upper River Region	4408	4078	17620	18300	760	22076	23170
Western Region 1	9193	7901	48491	51015	1121	57684	60037
Western Region 2	6354	5772	22595	23652	669	29824	30233
Total	25240	22755	109046	113258	3252	135795	140115

SOURCE: HMIS 2013

Table 20: Number of Sexually Transmissible Infections reported by Region

REGIONS	Urethral discharge	Vaginal discharge	Lower abdominal pain in pregnancy	Other Sexually Transmissible Infections	
				M	F
Central River Region	1599	2928	4644	1373	4149
Lower River Region	400	1370	1764	224	655
North Bank East Region	258	1547	2338	412	1272
North Bank West Region	334	1075	1180	771	1854
Upper River Region	548	2578	4005	314	1100
Western Region 1	1617	6211	5628	1955	5117
Western Region 2	933	2706	1903	875	1513
Total	5689	18415	21462	5924	21584

SOURCE: HMIS 2013

Table 21: Number of INMCI Priority Conditions by Region-2013

Regions	Malnutrition		Anaemia		Diarrhoea		Pneumonia	
	M	F	M	F	M	F	M	F
Central River Region	0	118	240	250	9041	8489	4652	4683
Lower River Region	67	417	461	715	2850	2624	3075	2833
North Bank East Region	48	137	251	241	4330	3842	2861	2467
North Bank West Region	291	469	1609	1781	2762	2466	2840	2594
Upper River Region	34	39	468	444	5867	5485	3703	3212
Western Region 1	27	230	477	485	15536	15255	1856	1840
Western Region 2	520	387	1502	1755	8888	8478	3289	3278
Total	987	1797	5008	5671	49274	46639	22276	20907

SOURCE: HMIS 2013

Table 22: Number of IMNCI Priority Conditions by Region-2013

Regions	No pneumonia:Cough or cold		Diarrhoea with some dehydration		Skin disorder		Measles with eye or mouth complication	
	M	F	M	F	M	F	M	F
Central River Region	9663	10307	577	577	5530	5500	38	38
Lower River Region	4194	4093	497	497	2805	2665	46	54
North Bank East Region	5661	5533	183	183	3055	3260	0	0
North Bank West Region	3998	3784	468	468	2474	2544	4	3
Upper River Region	6516	6275	177	177	3106	2877	2	3
Western Region 1	21912	21236	257	257	13161	13467	317	377
Western Region 2	12885	13190	758	758	6849	6787	118	133
Total	64829	64418	2917	2917	36980	21089	523	605

SOURCE: HMIS 2013

Table 23: Number of IMNCI Priority Conditions by Region-2013

Regions	Low weight with anemia		Possible Serious bacterial infection		Persistent diarrhoea		Diarrhoea with blood/mucus(Dysentry)	
	M	F	M	F	M	F	M	F
Central River Region	121	162	1529	1534	144	154	1311	1332
Lower River Region	54	45	267	272	55	73	428	425
North Bank East Region	14	21	214	194	73	70	598	546
North Bank West Region	135	117	980	278	8	6	639	554
Upper River Region	55	58	142	149	135	51	519	476
Western Region 1	263	45	913	1064	19	17	1002	920
Western Region 2	254	286	188	207	422	386	1468	1458
Total	896	734	4252	3713	856	757	5965	5711

SOURCE: HMIS 2013

Table 24: Number of IMNCI Priority Conditions by Region-2013

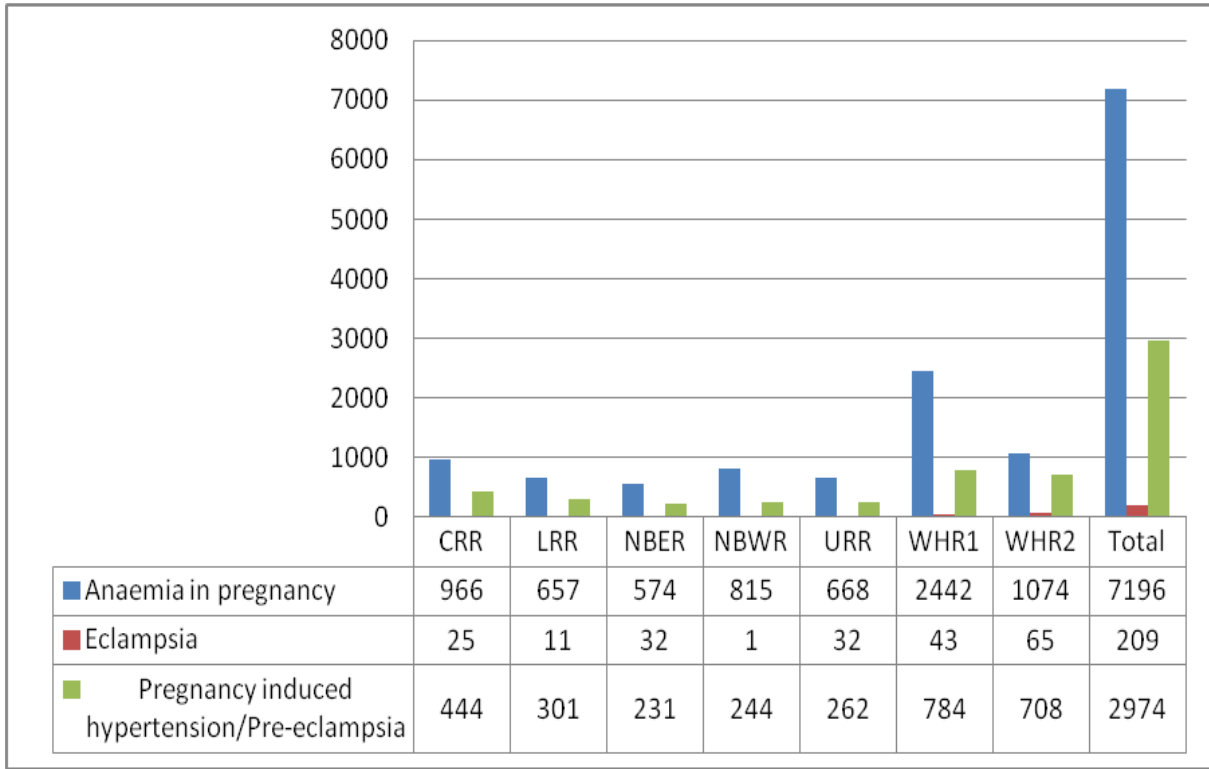
Regions	Chronic ear infection		Acute ear infection		Eye infection	
	M	F	M	F	M	F
Central River Region	252	265	790	815	1039	999
Lower River Region	73	87	353	344	596	641
North Bank East Region	46	47	372	305	506	475
North Bank West Region	84	69	263	235	204	236
Upper River Region	181	182	330	313	265	261
Western Region 1	355	400	1203	1209	1033	1141
Western Region 2	191	195	972	929	1577	1610
Total	1182	1245	4283	4150	5220	5363

SOURCE: HMIS 2013

CHAPTER 6

MATERNAL CONDITIONS

Figure 2: Number of Maternal conditions by Region



7.2 DISEASES REPORTED ON >5

Table 25: Number of Diseases reported on >5 years by Region-2013

REGIONS	Differentially able		Helminth infestation		(Cancrum Oris) NOMA		Typhoid fever	
	M	F	M	F	M	F	M	F
CRR	10	21	906	1119	0	7	0	2
LRR		4	442	554	0	0	0	0
NBER	2	3	341	405	0	0	0	7
NBWR	222	371	401	578	4	3	13	6
URR	5	12	385	442	4	6	0	0
WHR1	1	2	1454	1585	2	2	13	13
WHR2	16	49	796	969	0	0	39	45
TOTAL	256	462	4725	5652	10	18	65	73

These are infections requiring laboratory and adequate clinical attention for their detection and management. These diseases have no preference for gender and all sexes are almost equally affected in all the regions across the country. The percentage increase or decrease entirely depends on regional overall attendances.

Table 26 indicates that skin diseases dominate among other diseases of public health importance followed by pneumonia in all the regions. The exposure to these may vary by region and locality and therefore causes gender disparities. Improvements in environmental and nutritional programmes and strategies can contribute immensely to the reduction of incidence of these diseases.

Table 26: Number of Diseases reported on >5 years by Region-2013

REGIONS	Skin disorders		Anaemia		Diarrhoea with blood/mucus		Pneumonia	
	M	F	M	F	M	F	M	F
CRR	8808	9319	1040	2242	2231	2715	7158	8085
LRR	4717	5124	817	1339	908	1104	4334	4803
NBER	4768	5423	1073	2068	954	1182	4008	5304
NBWR	4347	4574	472	1042	1001	1154	3962	4203
URR	4752	5006	608	1371	936	1091	6069	6327
WHR1	23869	26260	3534	4736	1722	1881	2705	2995
WHR2	9755	10212	2717	4353	2375	2847	5082	5833
TOTAL	61016	65918	10261	17151	10127	11974	33318	31717

SOURCE: HMIS 2013

Table 27: Number of Diseases reported on >5 years by Region-2013

Region	Schistosomiasis	SARSs	Smallpox	Yellow Fever	Typhoid fever	Meningitis	Lymph filar	Measles
CRR	231	0	0	0	2	4	0	3
LRR	1	0	0	0	0		0	7
NBER	70	0	0	0	7	6	0	0
NBWR	0	0	0	0	19		0	0
URR	23	0	0	2		9	0	0
WHR1	0	0	0	3	26	1	0	21
WHR2	2	0	0	0	84	1		45
Total	327	0	0	0	0	11	0	66

SOURCE: HMIS 2013

CHAPTER 7

EYE CONDITIONS

Table 28: Number of Eye conditions by region-1013

Regions	Cataracts		Trachoma		Conjunctivitis	
	M	F	M	F	M	F
CRR	368	372	42	41	1576	1724
LRR	141	134	20	20	1161	1281
NBER	315	405	5	11	1071	1400
NBWR	46	61		9	576	623
URR	295	250	5	11	1006	1061
WHR1	236	289	36	62	6031	7425
WHR2	437	452	31	50	3152	3340
TOTAL	1838	1963	139	204	14573	16854

SOURCE: HMIS 2013

Table 29: Number of Eye conditions by region

Regions	Ophthalmia neonatium		Glaucoma		Other eye conditions	
	M	F	M	F	M	F
CRR	19	21	88	61	602	702
LRR	16	21	13	6	299	347
NBER	4	3	58	60	1007	1283
NBWR	15	24	14	20	373	414
URR	28	21	55	27	412	421
WHR1	95	81	30	24	1300	1423
WHR2	46	51	149	192	1456	1798
TOTAL	223	222	280	343	4069	6388

SOURCE: HMIS 2013

Trachoma is among the diseases targeted for elimination and the incidence has significantly dropped in all the regions with improved national eye services and management in all the regions. Conjunctivitis dominance is expected as is a disease conditions manifested by so many other diseases. Cataract is a major eye problem and the prevalence seems a bit high still

considering the level of achievement of target indicator. Sex dominance can be again attributed to the natural global gender disparity affecting all countries.

This is a condition affecting new babies most of whom acquire infection from labour related care and management. Improvement in clean delivery by trained health staff is essential in its reduction. Infection prevention and control strategies in labour and other neonatal wards should be strengthened in all regions.

Other eye conditions are shared between injuries and other occupational related problems sustained from economic production and socioeconomic domestic activities. Their prevalence increases by day as far as advancements in cheap labour and industrialization is concerned. Maintenance of public health and other domestic policies could immensely contribute to th

CHAPTER 8

NON COMMUNICABLE DISEASES

NON COMMUNICABLE DISEASES CASES BY REGION – 2013

Table below shows that hypertension and diabetes were the highest major non communicable diseases, being more prevalent among women in the entire six health administrative region in 2013. While hepatic, cardiac disorders and renal failure are more prominent in men in 2013 as shown in table below.

Table below shows the distribution of the three major causes of accidents seen in the country by region. It shows that majority of the accidents registered in the health facilities are road traffic accidents. Out of the 3842 accidents recorded WHR1 registered the highest with 36.8%, followed by URR with 34.4%. The lowest region to report the number of accidents in the year was NBER with 81 cases (2.1%). The highest number of Dog bites cases is seen in WHR1 (n=777) and URR reported (n=374). All the seven health administrative region of the country reported snake bite but on like road traffic accidents and dog bites, there is a significant variation of the numbers of cases seen in WHR1 (n=165) and LRR (n=25).

Table 29 and 30 shows other minor accident conditions reported in the entire regions in 2013. Falls from height account for the highest number of cases reported in 2013 in the entire seven health regions. WHR2 (n=234); URR (n=572); CRR (n=404); NBER (n=259); NBWR (n=219) and LRR (n=173). Meanwhile WHR1 is seen with the highest number of fractures (n=730) in 2013.

Table 30: Major conditions by region-2013

REGION	Hypertension		Diabetes		Asthma		Cancer	
	M	F	M	F	M	F	M	F
Central River Region	4996	9148	473	451	1044	1068	9	10
Lower River Region	1867	4233	162	189	401	419	3	2
North Bank East Region	2416	6983	272	220	494	461	1	
North Bank West Region	2082	5581	305	387	362	455	8	10
Upper River Region	2221	5120	196	278	481	650		1
Western Region 1	4078	10191	1267	2022	1614	1734	26	23
Western Region 2	4816	10291	481	590	1147	1317	10	22
Total	22476	51547	3156	4137	5543	6104	57	68

SOURCE: HMIS 2013

Table 31: Major conditions by region - 2013

REGION	Renal failure		Liver disorder		Cardiac disorder		Other non-communicable disease	
	M	F	M	F	M	F	M	F
Central River Region	50	64	16	9	57	47	7482	16937
Lower River Region	7	1	4	2	55	50	1617	2249
North Bank East Region	1	1	1	2	31	23	865	1466
North Bank West Region			9		12	6	1061	2082
Upper River Region	5	3		9	30	33	9507	14283
Western Region 1	3	6	7	5	19	26	12180	20012
Western Region 2	54	28	32	27	216	170	2152	2891
	120	103	69	54	420	355	34864	59920

SOURCE: HMIS 2013

Table 32: Number of Accident cases by Region-2013

Regions	Road traffic accidents		Other injuries		Dog bites		Snake bites	
	M	F	M	F	M	F	M	F
CRR	319	80	3281	2026	101	53	73	54
LRR	154	101	1500	811	26	15	12	13
NBER	66	16	2035	1084	72	47	60	38
NBWR	120	61	2127	1166	120	54	28	15
URR	837	563	2266	1519	209	165	28	11
WHR1	874	541	6729	3466	436	341	17	17
WHR2	422	312	2416	1530	104	107	82	83
TOTAL	2792	1050	20354	11602	632	782	300	231

SOURCE: HMIS 2013

Table 33: Number of Accident cases by Region – 2013

Regions	Other bites		Fracture		Fall from height	
	M	F	M	F	M	F
CRR	251	210	43	26	237	167
LRR	121	75	18	8	97	76
NBER	159	140	5	3	140	119
NBWR	76	43	19	11	131	88
URR	730	537	107	155	367	205
WHR1	104	90	25	15	482	248
WHR2	197	140	48	39	164	70
TOTAL	1638	1235	265	257	1618	973

SOURCE: HMIS 2013

Table 34: Number of Accident cases by Region-2013

Regions	Ingestion of harmful substances		Burns		Drowned	
	M	F	M	F	M	F
CRR	29	26	250	252	7	4
LRR	29	29	142	133	2	6
NBER	20	20	159	139	1	
NBWR	21	19	157	151	5	2
URR	12	19	532	421	6	2
WHR1	97	106	606	632	7	8
WHR2	30	47	282	255	49	68
TOTAL	238	266	2128	1844	77	90

SOURCE: HMIS 2013

Table 35: Number of Mental Disorder by region-2013

REGIONS	Mania		Depression		Drug induced psychosis		Organic psychosis	
	M	F	M	F	M	F	M	F
CRR	18	10	16	12	45	1	33	31
LRR	4		3	3	3	2	15	6
NBER	3	1	0	3	13	3	81	70
NBWR	2	1	0	1	4	0	5	8
URR	1	2	27	22	9	2	12	11

WHR1	160	102	365	251	698	48	221	146
WHR2	18	13	9	26	7	1	84	81

SOURCE: HMIS 2013

Table 36: Number of Mental Disorder by region-2013

REGIONS	Epilepsy		Schizophrenia		other mental disorder	
	M	F	M	F	M	F
CRR	1128	1247	107	76	100	108
LRR	287	370	20	19	25	31
NBER	737	830	11	4	15	10
NBWR	416	424	4	3	0	15
URR	468	503	26	19	24	37
WHR1	1343	1056	581	509	504	606
WHR2	819	818	13	15	18	13

SOURCE: HMIS 2013

Table 36 above shows that drug induced psychosis (n=837) and organic psychosis (n=804) responsible for major mental disorder seen during outpatients clinics. WHR1 reported highest for both conditions. A significant level of depression was reported in WHR1 (616).

CHAPTER 9

ORAL DISORDERS AND IMPATIENT ADMISSIONS

Table 37: Number of Oral Disorder cases by Region-2013

REGIONS	Toothache		Oral thrust/ulcer		Gingivitis		Dental abscess		Other oral disorders	
	M	F	M	F	M	F	M	F	M	F
CRR	1196	1983	578	717	184	219	419	600	975	1347
LRR	881	1215	397	566	101	135	238	301	215	319
NBER	961	1620	406	507	72	93	532	759	472	560
NBWR	778	1399	505	623	53	74	285	417	343	375
URR	544	1117	187	317	39	32	126	247	112	183
WHR1	4107	4759	1500	1535	404	430	1901	2199	2654	3111
WHR2	1842	2504	602	903	83	102	556	618	277	274

SOURCE: HMIS 2013

TOTAL INPATIENT ADMISSION

Table 38: Number of Inpatient Admission by Region

REGION	Inpatient Admission		
	Male	Female	TOTAL
Central River Region	3607	3438	7045
Lower River Region	1185	1308	2493
North Bank East Region	1558	1462	3020
North Bank West Region	960	937	1897
Upper River Region	2267	2323	4590
Western Region 1	3722	4697	8419
Western Region 2	1871	1752	3623
National Total	15170	15917	31087

Source: HMIS 2013

The total number of admission in the health facilities was 31087. Of this WHR1 recorded the highest number of cases of 8419 representing 27.08%. URR and CRR recorded 14.77% and 22.66% respectively. The region with the lowest number of admission was NBWR 6.10%.

Table 39: Number of Admission due to Severe confirmed Malaria by Region

REGIONS	Severe confirmed malaria < 5 years		Severe confirmed malaria > 5 years		Severe confirmed malaria in pregnancy < 5 years
	M	F	M	F	F
Central River Region	500	364	619	536	75
Lower River Region	89	90	147	159	21
North Bank East Region	16	12	45	54	16
North Bank West Region	45	63	79	57	1
Upper River Region	236	210	451	558	60
Western Region 1	591	577	934	1043	308
Western Region 2	248	197	276	250	22
Total	1725	1513	2551	2657	503

SOURCE: HMIS 2013

Table 40: Number of Admission due to Sexually Transmitted Diseases by Region

	Urethral discharge	Vaginal discharge	Lower abdominal pain in pregnancy	Other sexually transmitted infections	
				M	F
Central River Region	96	54	84	153	82
Lower River Region	13	143	177	0	21
North Bank East Region	13	37	26	42	65
North Bank West Region	16	32	11	5	35
Upper River Region	1	46	72	9	21
Western Region 1	10	55	37	31	225
Western Region 2	112	61	15	14	18
Total	261	428	422	254	467

SOURCE: HMIS 2013

Table 41: Number of Admission due to IMNCI Priority Conditions by Region

Region	Severe malnutrition		Severe malnutrition with anaemia		Severe pneumonia	
	M	F	M	F	M	F
Central River Region	109	124	1	2	754	582
Lower River Region	47	56	6	13	376	277
North Bank East Region	41	41	7	1	339	276
North Bank West Region	12	26	5	3	253	264
Upper River Region	51	47	3	3	840	630
Western Region 1	33	24	0	1	545	444
Western Region 2	37	48	98	110	325	273
Total	330	366	120	133	3432	2746

SOURCE: HMIS 2013

Table 42: Admission due to IMNCI Priority Conditions by Region

Regions	Anaemia < 5 years		Possible Serious Bacterial infection < 5 years		Severe persistent diarrhoea < 5 years		Diarrhoea with severe dehydration < 5 years	
Central River Region	145	127	196	154	19	16	69	41
Lower River Region	46	32	58	67	6	1	54	37
North Bank East Region	71	53	68	71	25	11	62	51
North Bank West Region	31	32	27	21	5	8	13	14
Upper River Region	47	45	6	5	9	7	13	5
Western Region 1	136	141	18	18	31	26	103	55
Western Region 2	72	60	51	31	25	24	29	36
Total	548	490	424	367	120	93	343	239

SOURCE: HMIS 2013

Table 43: Number of Admission due to maternal conditions by Region

REGION	Data elements			
	Aneama in pregnancy	Eclampsia	Pregnancy induced hypertension / Pre-eclampsia	Grand Total
Central River Region	68	50	101	219
Lower River Region	46	26	57	129
North Bank East Region	50	28	110	188
North Bank West Region	3	1	12	16
Upper River Region	141	46	56	243
Western Region 1	109	77	163	349
Western Region 2	11	2	32	45
Grand Total	428	230	531	1189

SOURCE: HMIS 2013

Table 44: Number of Admission due to Diseases reported on >= 5 by Region

Regions	Differentially able		Helminth infestation		(Cancrum Oris) NOMA		Pneumonia	
	M	F	M	F	M	F	M	F
Central River Region	0	0	1	0	0	0	0	0
Lower River Region	3	0	0	0	0	0	0	0
North Bank East Region	0	1	1	0	0	0	0	0
North Bank West Region	0	0	6	0	0	0	0	0
Upper River Region	0	0	0	0	0	0	0	0
Western Region 1	0	0	0	0	0	1	0	0
Western Region 2	0	0	0	0	0	0	0	0
Grand Total	3	1	8	0	0	1	0	0

SOURCE: HMIS 2013

Table 45: Number of Admission due to Diseases reported on >= 5 by Region

Regions	Severe pneumonia		Diarrhoea with severe dehydration		Diarrhoea with blood/mucous (Dysentry)		Skin disorders		Anaemia	
	M	F	M	F	M	F	M	F	M	F
Central River Region	163	165	42	70	17	40	17	26	12	23
Lower River Region	30	25	6	11	5	16	114	7	28	58
North Bank East Region	164	131	33	45	4	7	150	7	18	14
North Bank West Region	21	48	11	20	5	8	8	7	20	31
Upper River Region	86	94	25	32	25	11	53	2	81	10
Western Region 1	173	132	46	56	7	8	18	11	88	30
Western Region 2	72	56	17	26	4	3	7	7	35	9
Grand Total	709	651	180	260	67	93	367	67	56	93
									2	3

SOURCE: HMIS 2013

Admission for severe pneumonia among all conditions was highest with 19.9% in all the regions. Admissions are lowest in regions without hospitals which may be due to the lack of adequate management services and therefore all severe cases are referred to hospitals. It is highest in WHR1 due to the same reasons above and also rate of attendances and population sizes, but lowest in NBWR with 6.10%. The outcome by case fatality rates will determine the weight of clinical care and quality of services.

Only WHR 1 admits cases (1 female) of NOMA. This is a new disease in the country introduced in 2008 and only tertiary centers could have the facilities for proper case detection and management.

Majority of admissions case for helminthes infections took place in NBER, CRR and NBWR. Percentage admissions for the other regions are far below 1% and in fact no admissions were recorded by NBWR health facilities. This may be due to lack of services and also no severe cases seen that may warrant admission.

Table 46: Number of Admission due to Eye conditions by region

Region	Cataracts		Trachoma		Conjunctivitis		Ophthalmia neonatrum		Glaucoma		Other eye conditions	
	M	F	M	F	M	F	M	F	M	F	19	15
CRR	28	50	2	3	42	15	0	0	0	0		
LRR	26	32	0	0	1	1	0	0	0	0	1	1
NBER	61	80	0	0	1	0	0	0	0	0	8	13
NBWR	0	0	1	0	0	0	0	0	0	0	0	0
URR	47	63	0	0	0	0	0	0	19	21	15	17
WHR 1	0	0	0	0	3	3	3	0	0	0	1	1
WHR 2	54	67	19	10	0	0	1	0	0	0	11	12
Grand Total	216	292	22	13	47	19	367	0	19	21	55	59

SOURCE: HMIS 2013

MAJOR CONDITIONS BY REGION – 2013

Table 47: Number of Admission due to Non Communicable Diseases cases by Region

Region	Hypertension		Diabetes		Renal failure		Cardiac disorder		Liver / Hepatic disorder		Cancer		Asthma	
	M	F	M	F	M	F	M	F	M	F	M	F	M	F
Central River Region	135	181	18	25	3	3	10	8	2	5	2	5	55	41
Lower River Region	41	44	11	6	0	0	21	17	2	1	2	2	7	9
North Bank East Region	131	125	19	12	1	1	21	33	8	5	14	10	22	29
North Bank West Region	144	73	24	24	8	0	13	22	5	0	0	0	25	25
Upper River Region	76	94	10	3	0	0	2	1	2	1	0	0	27	32
Western Region 1	146	283	84	157	6	3	19	31	5	5	12	9	66	65
Western Region 2	34	49	7	9	1	3	12	15	0	0	9	5	12	11

Grand Total	842	1030	191	261	22	13	108	135	26	22	41	36	269	253
-------------	-----	------	-----	-----	----	----	-----	-----	----	----	----	----	-----	-----

SOURCE: HMIS 2013

Table 48: Number of Admission due to Non Communicable Diseases Cases by Region

Region	Liver / Hepatic disorder		Cardiac disorder		Renal failure		Other non-communicable diseases	
	M	F	M	F	M	F	M	F
CRR	16	9	57	47	50	54	7482	16937
LRR	4	2	55	50	7	1	1617	2249
NBE	1	2	31	23	1	1	865	1466
NBW	9	0	12	6	0	0	1061	2082
URR	0	9	30	33	5	3	9507	14283
WHR 1	7	5	19	26	3	6	12180	20012
WHR 2	23	27	237	149	54	28	2152	2891
Total	60	54	441	334	120	93	34864	59920

SOURCE: HMIS 2013

Table 49: Number of Admission due to Accident cases by Region

	Road traffic accidents		Other injuries		Dog bites		Snake bites		Other bites	
	M	F	M	F	M	F	M	F	M	F
Central River Region	26	9	50	21	2		20	9	2	
Lower River Region	16	14	6	2	2		0	0	0	0
North Bank East Region	7	2	7	3	1	2	41	21	2	1
North Bank West Region	14	6	18	16	2	2	17	14	5	7
Upper River Region	10	2	5	0	0	0	0	0	0	0
Western Region 1	7	4	30	3	3	0	0	2	0	0
Western Region 2	3	1	2				2	3	0	0
Grand Total	83	38	118	45	10	4	80	49	9	8

SOURCE: HMIS 2013

Table 50: Number of Admission due to Accident cases by Region

Region	Fracture		Fall from height		Ingestion of harmful substances		Burns		Drowned	
	M	F	M	F						
Central River Region	24	8	9	4	4	6	24	22	0	0
Lower River Region	2	1	6	3	6	3	20	12	3	0
North Bank East Region	3	0	18	2	2	0	16	21	0	0
North Bank West Region	0	0	13	4	2	4	16	16	0	0
Upper River Region	0	0	6	2	3	2	13	12	0	0
Western Region 1	3	1	2	1	1	2	35	35	4	1
Western Region 2	2	0	1	0	8	1	2	0	1	0
Grand Total	34	10	55	16	26	18	126	118	8	1

SOURCE: HMIS 2013

Table 51: Number of Admission due to Mental Disorder by region

Region	Mania		Depression		Drug induced psychosis		Organic psychosis		Epilepsy		Schizophrenia		Other mental disorders	
	M	F	M	F	M	F	M	F	M	F	M	F	M	F
Central River Region	0	0	0	0	0	0	3	0	12	2	0	1	1	
Lower River Region	0	0	0	0	0	0	0	0	10	6	0	0	0	3
North Bank East Region	0	0	0	0	1	0	2	5	9	5	0	0	0	0
North Bank West Region	0	0	0	1	0	0	0	0	3	4	0	0	0	0
Upper River Region	0	0	0	1	1	0	0	0	4	5	0	0	1	0
Western Region 1	0	1	8	2	0	0	5	2	6	3	0	0	2	1
Western Region 2	0	0	0	0	0	0	0	0	9	2	0	0	0	0
Grand Total														

SOURCE: HMIS 2013

Table 52: Number of Admission due to Oral Disorder by region

REGION	Toothache		Oral thrust/ulcer		Gingivitis		Dental abscess		Other oral disorders	
	M	F	M	F	M	F	M	F	M	F
Central River Region	5	1	2	2	0	1	0	2	0	0
Lower River Region	1	2	1	13	0	0	0	2	0	0
North Bank East Region	1	1	0	1	0	0	1	2	0	0
North Bank West Region	13	3	13	4	3		24	13	13	3
Upper River Region	2	1	1	1	0	0	2	1	0	0
Western Region 1	0	0	0	0	0	0	8	1	0	2
Western Region 2	0	0	2	0	0	0	0	1	7	0
Grand Total	22	8	19	21	3	1	35	22	20	5

SOURCE: HMIS 2013

CHAPTER 12

DEATHS REPORTED BY FACILITY

NUMBER OF DEATHS REPORTED BY HEALTH FACILITIES

Table 53: Total number of Deaths reported by Health facilities – 2013

REGION	< 5 Years	> 5 Years	Total
CRR	177	284	461
LRR	86	69	155
NBE	111	172	283
NBW	65	112	177
URR	136	202	338
WHR 1	200	583	783
WHR 2	170	379	549
Total	945	1801	2746

SOURCE: HMIS 2013

Table 54: Deaths on arrival at Health facilities

Region	Brought In Dead		Dead On arrival Facility		Maternal Death On Arrival		Other Deaths On Arrival	
	M	F	M	F	M	F	M	F
Central River Region	9	10	5	7	0	1	5	9
Lower River Region	8	4	5	7	0	2		
North Bank East Region	10	2	10	2	0	0	3	4
North Bank West Region	0	0	1	0	0	2	0	0
Upper River Region	5	8	6	4	0	1	4	2
Western Region 1	103	87	40	18	0	7	8	9
Western Region 2	28	13	16	14	0	3	6	6
National	163	124	83	52	0	16	26	30

SOURCE: HMIS 2013

Table 55: Number of Deaths due to Accident cases by Region – 2013

Region	Road traffic accidents		Other injuries		Dog bites		Snake bites		Other bites		Fracture		Fall from height		Ingestion of harmful substances		Burns		Drowned	
	M	F	M	F	M	F	M	F	M	F	M	F	M	F	M	F	M	F	M	F
WHR 1	1	0	0	0	0	0	0	0	0	0	0	0	0	0	0	0	0	0	1	0
WHR 2	0	0	0	0	0	0	0	0	0	0	0	0	0	0	0	0	0	1	0	0
NBWR	1	0	1	1	0	0	1	0	1	0	0	0	0	0	0	0	1	0	0	0
NBER	0	0	2	0	0	0	1	0	0	0	0	0	0	0	0	0	0	0	0	0
LRR	1	0	0	0	0	0	0	0	0	0	0	0	0	0	1	0	0	1	0	
CRR	0	0	0	0	0	0	0	0	0	0	2	0	2	0	0	0	0	2	1	0
URR	0	0	0	0	0	0	0	0	0	0	0	0	0	0	0	0	0	1	0	1
Total	3	0	3	1	0	0	2	0	1	0	2	0	2	0	0	1	1	4	3	1

Source: HMIS 2013

Table 56: Number of Deaths due to Non Communicable Diseases cases by Region – 2013

Region	Hypertension		Diabetes		Asthma		Cancer		Liver / Hepatic disorder		Cardiac disorder		Renal failure		Other non-communicable diseases	
	M	F	M	F	M	F	M	F	M	F	M	F	M	F	M	F
WHR 1	12	16	4	5	1	0	1	4	1	2	6	2	1	2	34	35
WHR 2	2	5	0	1	0	0	4	4	1	1	1	2	0	0	12	15
NBWR	15	4	1	1	1	0	0	0	0	1	5	0	0	0	0	0
NBER	8	6	4	1	0	0	2	5	1	1	3	2	0	0	0	3
LRR	4	5	1	0	0	0	0	0	0	0	3	1	0	0	5	8
CRR	10	12	3	1	4	0	3	2	1	0	0	0	0	0	10	12
URR	6	8	0	0	0	2	0	0	0	1	1	1	0	0	2	0
Total																

Source: HMIS 2013

Table 57: Number of Deaths due to maternal conditions by Region – 2013

Region	Pregnancy induced hypertension/Pre-Eclampsia	Eclampsia	Anaemia in pregnancy
WHR 1	0	2	0
WHR 2	2	0	0
NBWR	0	0	0
NBER	0	0	0
LRR	0	2	1
CRR	1	3	0
URR	0	0	2
Total	3	7	3

Source: HMIS 2013

Table 58: Number of Deaths due to some disease condition of special focus among children under five years (IMNCI) by Region – 2013

REGION	Serious possible bacterial infection		Skin disorders		Diarrhoea with blood/mucus (Dysentery)		Severe persistent diarrhoea		Diarrhoea with severe dehydration	
	M	F	M	F	M	F	M	F	M	F
WHR 1	0	0	0	0	0	0	1	1	0	0
WHR 2	1	1	0	0	0	0	0	0	4	2
NBWR	1	0	3	0	0	2	0	0	0	0
NBER	12	22	0	0	0	0	1	0	4	6
LRR	4	3	0	0	0	0	0	0	1	2
CRR	0	0	0	1	0	0	0	1	4	3
URR	0	0	1	0	0	0	1	2	0	1
TOTAL	18	26	4	1	0	2	3	4	13	12

Source: HMIS 2013

Table 59: Number of Deaths due to Sexually Transmitted Diseases by Region – 2013

Region	Urethral discharge	Vaginal discharge	Lower abdominal pain in pregnancy	Other sexually transmitted infections	
	Female	Female	Female	M	F
CRR	4	2	1	3	0
LRR	0	0	0	0	1
NBE	0	0	0	1	3
NBWR	1	0	0	1	0
URR	0	0	0	0	0
WHR 1	0	0	0	0	0
WHR 2	3	5	0	6	3
Total					

Source: HMIS 2013

Table 60: Deaths on arrival at Health facilities in 2013

REGION	Brought In deaths		Dead On Arrival At Facility		Maternal Deaths on Arrival	Other Deaths On Arrival	
	M	F	M	F	F	M	F
Central River Region	9	10	5	7	1	5	9
Lower River Region	8	4	5	7	2	0	0
North Bank East Region	10	2	10	2	0	3	4
North Bank West Region	0	0	1		2	0	0
Upper River Region	5	8	6	4	1	4	2
Western Region 1	103	87	40	18	7	8	9
Western Region 2	28	13	16	14	3	6	6
Total	163	124	83	52	16	26	30

SOURCE: HMIS 2013

Table 61: Number of Deaths due to Severe confirmed Malaria by Region

REGION	Severe confirmed malaria < 5 years		Severe confirmed malaria > 5 years		Severe confirmed malaria in pregnancy	
	M	F	M	F	M	F
Central River Region	6	6	8	10		3
Lower River Region	7	6	6	6		0
North Bank East Region	3	3	1	1		1
North Bank West Region	4	1	5	5		0
Upper River Region	16	9	20	12		0
Western Region 1	4	10	8	10		1
Western Region 2	8	4	4	8		6
Total	48	39	52	52		11

SOURCE: HMIS 2013

Table 62: Number of Deaths due to Sexually Transmitted Diseases by Region

REGION	Urethral discharge		Vaginal discharge		Lower abdominal pain in pregnancy		Other sexually transmitted infections	
	M	F	M	F	M	F	M	F
	4	0	0	2	0	1	3	0
Central River Region	4	0	0	2	0	1	3	0
Lower River Region	0	0	0	0	0	0	0	0
North Bank East Region	0	0	0	0	0	0	1	2
North Bank West Region	1	0	0	0	0	0	1	0
Upper River Region	0	0	0	0	0	0	0	0
Western Region 1	0	0	0	0	0	0	0	0
Western Region 2	3	0	0	5	0	0	6	5
Total	12	0	0	9	0	2	14	7

SOURCE: HMIS 2013

CHAPTER 13

REGISTRATION OF BIRTHS AND DEATHS

14: BIRTHS REGISTRATION

GAMBIAN PARENTS

Table 63: Number of Birth Registration by Region- (Gambian Parents) – 2013

REGION	EARLY REGISTRATION <1		LATE REGISTRATION 1-5 YEARS		LATE REGISTRATION OVER 5 YEARS	
	M	F	M	F	M	F
Central River Region	1595	1570	1058	1015	2270	2064
Lower River Region	645	645	453	497	787	733
North Bank East Region	754	663	536	561	1321	1170
North Bank West Region	698	718	454	521	1375	1272
Upper River Region	2540	2323	1049	967	1934	1512
Western Region 1	2453	2204	2168	2217	7273	6583
Western Region 2	1018	924	678	723	2808	2362
Total	9703	9047	6396	6501	17768	15696

SOURCE: HMIS 2013

Table 64: Number of Birth Registration by Region (Non Gambian Parents) -2013

REGION	EARLY REGISTRATION <1		LATE REGISTRATION 1-5 YEARS		LATE REGISTRATION OVER 5 YEARS	
	M	F	M	F	M	F
Central River Region	2	3	13	9	3	4
Lower River Region	12	10	10	11	16	23
North Bank East Region	10	10	7	7	6	7
North Bank West Region	20	14	3	9	8	15
Upper River Region	62	42	11	12	21	24
Western Region 1	259	183	113	177	122	107
Western Region 2	64	52	33	21	44	30

Total	429	314	190	246	220	210
-------	-----	-----	-----	-----	-----	-----

SOURCE: HMIS 2013

BIRTHS OUTSIDE GAMBIA

Table 65: Number of Birth Registration by Region- (Births Outside Gambia) – 2013

REGION	EARLY REGISTRATION <1		LATE REGISTRATION1-5 YEARS		LATE REGISTRATION OVER 5 YEARS	
	M	F	M	F	M	F
Central River Region	0	1	1	0	0	0
Lower River Region	5	5	1	2	1	1
North Bank East Region	2		1		3	1
North Bank West Region	4	2	2	4	2	2
Upper River Region	44	24	6	11	74	47
Western Region 1	81	53	47	43	71	64
Western Region 2	9	5	7	4	6	2
Total	145	90	65	64	157	117

SOURCE: HMIS 2013

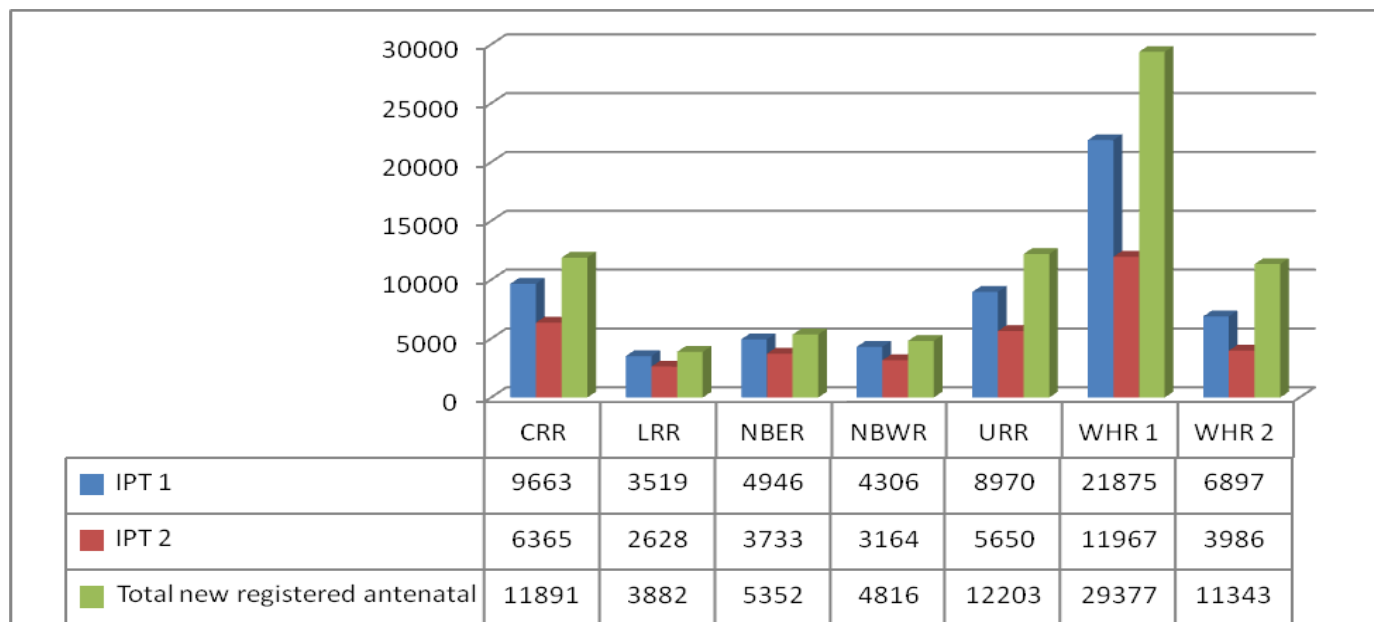
CHAPTER 14

REPRODUCTIVE HEALTH SERVICES

15: REPRODUCTIVE HEALTH SERVICES

ANTE NATAL CARE

Figure 3: Number of IPT 1 & 2 doses administered compared to total new registered antenatal by region - 2013



Source: HMIS 2013

Table 66: Number on Ante Natal clinics attendance by region

REGION	New attendance ≤ 15	New attendance ≥15	ANC Other Attendance
Central River Region	102 (0.86%)	11789 (99.14%)	27352
Lower River Region	8 (0.21%)	3874 (99.79%)	7308
North Bank East Region	6 (0.11%)	5346 (99.89%)	11004

North Bank West Region	77 (1.60%)	4739 (98.40%)	10468
Upper River Region	7 (0.06%)	12196 (99.94%)	27370
Western Region 1	981 (3.34%)	28396 (96.66%)	73606
Western Region 2	363 (3.20%)	10980 (96.80%)	25315
Total	1544 (1.96%)	77320 (98.04%)	182423

Source: HMIS 2013

Table 67: Number of RCH clinics scheduled, held and cancelled by region

RCH CLINICS	REGIONS							Grand Total
	CRR	LRR	NBER	NBWR	URR	WR1	WR2	
Clinics Total Scheduled	1351	682	688	826	1128	3231	1004	8910
Clinics Held	1338	674	687	813	1093	3198	960	8763
Clinics Cancelled	13	6	1	13	35	33	44	145
Clinics Cancelled Because Of Fuel Unavailability	1	0	0	0	3	0	4	8
Clinics Cancelled Because Of Holiday	8	6	1	10	28	22	39	167
Clinics Cancelled Because Of Staff Unavailability	0	0	0	0	2	4	1	7
Clinics Other reasons for cancelling	4	0	0	3	1	7	0	15
Grand Total	2715	1357	1377	1661	2290	6508	2052	17870

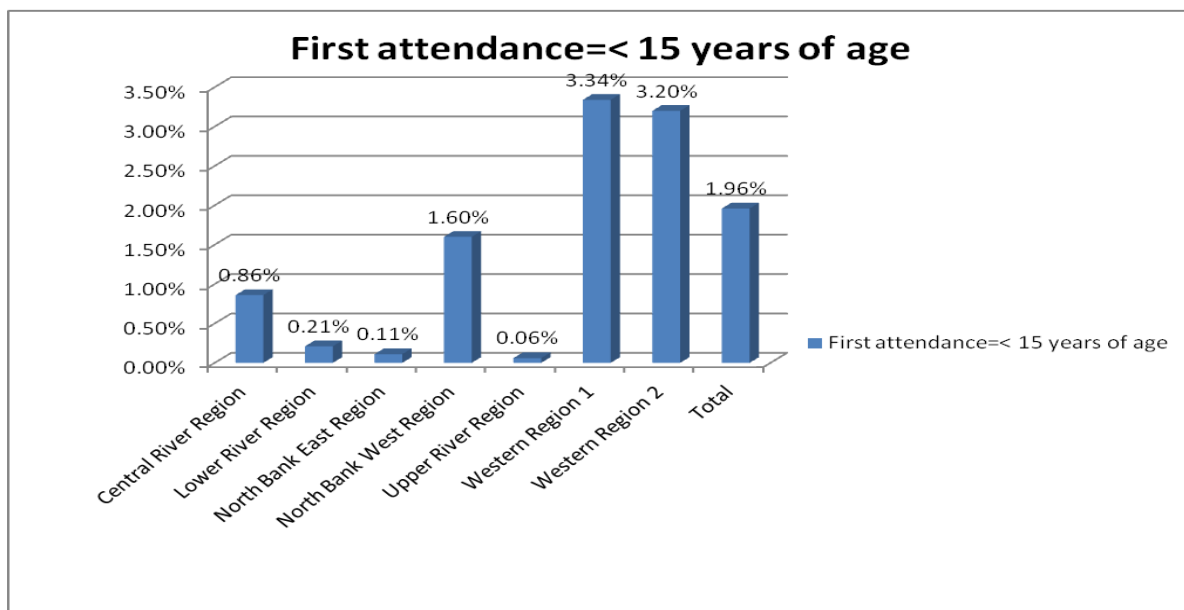
Source: HMIS 2013

Table 68: Percentage of RCH clinics conducted and cancelled by region

	Clinic held	Clinics Cancelled	Clinics cancelled Because of Public Holidays
CRR	99.04%	0.96%	0.59%
LRR	98.83%	0.88%	0.09%
NBER	99.85%	0.15%	0.15%
NBWR	98.43%	1.57%	1.21%
URR	96.90%	0.31%	0.25%
WHR1	98.98%	1.02%	0.68%
WHR2	95.62%	4.38%	3.88%

Source: HMIS 2013

Figure 4: First ante natal attendance less than or equal to 15 years of age



Source: HMIS 2013

Nationally 800087 new antenatal were registered in 2013, out of the total newly antenatal registered 78540 were above 15 years of age and 1547 were less than 15 years of age see table (...) above. Figure (...) above shows that 98.04% of newly antenatal registered were 15 years and above and 1.96% were less than 15 years nationally. WHR1 and WHR2 registered the highest rate of newly registered antenatals below 15 years of age at 3.34% and 3.20% respectively. The region to record the lowest percentage of new antenatal attendance is URR with 0.06%.

16: DELIVERIES

Table 69: Number of Deliveries conducted at Health Facilities by Region – 2013

Region	Total Deliveries		Conducted by midwives		Live Births		Stillbirths < 2.5kg	
	Male	Female	Male	Female	Male	Female	Male	Female
Central River Region	2995	3355	1686	1589	2922	2979	248	241
Lower River Region	926	801	801	663	868	791	29	15
North Bank East Region	1583	1432	970	851	1523	1374	59	57
North Bank West Region	1512	1393	1082	1026	1412	1261	20	15
Upper River Region	2442	2460	1708	1603	2251	2262	102	107
Western Region 1	10567	10673	7787	9489	10129	10066	193	205
Western Region 2	4071	4088	3492	3380	3921	3879	75	95
Total	2458	24160	17469	18531	23026	22612	726	735

Source: HMIS 2013

Table 70: Percentage of Institutional Deliveries, Deliveries conducted by Midwives and Deliveries out come by region--2013

Region	Total deliveries		Percentage Institutional Deliveries (%)		Percentage Deliveries Attended by Midwife (%)		Percentage Live Births (%)	
	Male	Female	Male	Female	Male	Female	Male	Female
Central River Region	4380	4809	47.17	52.83	51.48	48.52	48.91	51.09
Lower River Region	1737	1612	53.62	46.38	54.71	45.29	47.73	52.27
North Bank East Region	2418	2169	52.50	47.50	53.27	46.73	48.74	51.26
North Bank West Region	2429	2354	52.05	47.95	51.33	48.67	50.66	49.34
Upper River Region	5157	5113	49.82	50.18	51.59	48.41	49.97	50.03

Western Region 1	11134	11275	49.75	50.25	45.07	54.93	53.20	46.80
Western Region 2	5332	5468	49.92	50.08	50.84	49.16	49.16	50.84
Total	32587	32800	73.82	73.66	48.53	51.48	49.76	50.24

Source: HMIS 2013

Table 71: Number of Deliveries conducted at the Village Health Services by Region – 2013

Region	Total Deliveries		Live Births		Stillbirths	
	Male	Female	Male	Female	Male	Female
Western Region 1	567	602	562	587	5	15
Western Region 2	1299	1422	1291	1414	8	9
Central River Region	1385	1454	1358	1428	27	26
Upper River Region	2715	2653	2687	2617	28	36
Lower River Region	811	811	782	783	29	28
North Bank East Region	835	737	824	725	11	12
North Bank West Region	917	961	904	935	13	26
Total	8529	8640	8408	8489	121	152

Source: HMIS 2013

FAMILY PLANNING SERVICES

Table 72: Number of clients counseled for Family Planning Services by Region

Region	Total Women Seen			Total Men Seen			Counseled Only		
	< 15 years	15-24 years	> 24 years	< 15 years	15-24 years	> 24 years	< 15 years	15-24 years	> 24 years
Western Region 1	1149	6397	16140	93	1245	2586	23	1253	2836
Western Region 2	39	2831	5224	40	11055	7007	13	319	931
Central River Region	44	2594	4331	14	892	1469	33	560	887
Upper River Region	0	723	1419	30	362	655	4	258	333
Lower River Region	127	1293	1839	148	470	679	74	468	586
North Bank East Region	23	1284	2503	10	255	1475	35	661	681
North Bank West Region	23	1416	2984	1	152	1267	23	611	1080
Total	1405	16538	34440	336	14431	15138	205	4130	7334

Source: HMIS 2013

Table 73: Number of New Family Planning Services Acceptors by Method

Region	Microgynon			Depo			Neogynon		
	< 15 years	15-24 years	> 24 years	< 15 years	15-24 years	> 24 years	< 15 years	15-24 years	> 24 years
Western Region 1	4	728	1563	5	1622	3224	0	112	62
Western Region 2	18	623	1012	30	732	1054	0	0	0
Central River Region	23	378	588	7	643	1077	0	17	35
Upper River Region	0	195	379	0	195	643	0	3	5
Lower River Region	11	104	139	4	307	585	0	12	37
North Bank East Region	0	243	328	4	357	640	0	46	103
North Bank West Region	1	78	180	0	0	0	0	111	279
Total	57	2349	4189	50	3856	7223	0	301	521

Source: HMIS 2013

Table 74: Number of New Family Planning Services Acceptors by Method

Region	Microlut			Male Condom			Female Condom		
	< 15 years	15-24 years	> 24 years	< 15 years	15-24 years	> 24 years	< 15 years	15-24 years	> 24 years
Western Region 1	2	571	914	111	1476	3107	1	29	52
Western Region 2	2	225	461	24	1841	2929	11	19	27
Central River Region	0	0	0	1	422	1044	0	4	10
Upper River Region	0	0	0	20	212	853	0	32	33
Lower River Region	0	0	0	56	886	914	0	0	0
North Bank East Region	0	1	2	5	122	1291	0	0	0
North Bank West Region	0	5	72	0	86	362	0	5	10
Total	4	802	1449	217	5045	10500	12	89	132

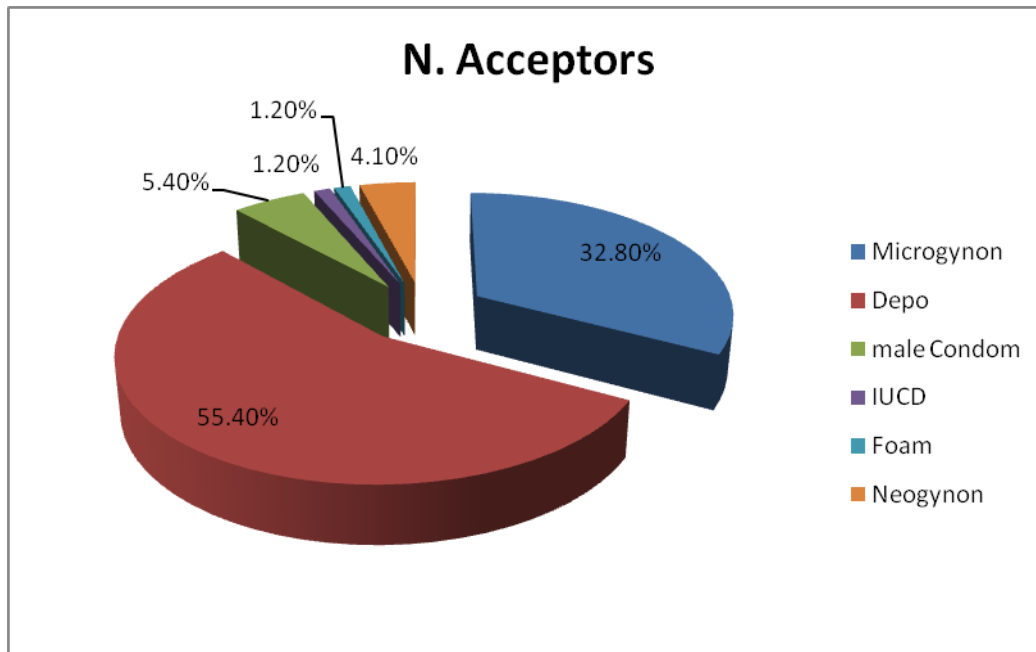
Source: HMIS 2013

Table 75: Number of New Family Planning Services Acceptors by Method

Region	FOAM			IUCD			Total New Acceptors		
	< 15 years	15-24 years	> 24 years	< 15 years	15-24 years	> 24 years	< 15 years	15-24 years	> 24 years
Western Region 1	0	33	157	0	55	108	122	5205	10890
Western Region 2	0	0	0	0	0	5	83	4989	8227
Central River Region	0	0	0	0	5	39	22	1427	2671
Upper River Region	0	0	0	0	0	0	20	636	1415
Lower River Region	0	0	0	0	0	2	72	1331	1689
North Bank East Region	0	0	0	0	10	6	6	780	2178
North Bank West Region	0	9	24	0	3	15	0	391	1130
Total	0	42	181	0	73	175	325	14759	28200

Source: HMIS 2013

Figure 4: Distribution of contraceptive methods by users (New Acceptors) in 2013.



Source: HMIS 2013

Among the Family planning methods by users depo constituted the highest new acceptors with 55.40%. The two least among the methods are foam and IUCD each accounting for 1.20%

Table 76: Number of Family Planning Services Revisit by Method

Region	Microlut			Male Condom			Female Condom		
	< 15 years	15-24 years	> 24 years	< 15 years	15-24 years	> 24 years	< 15 years	15-24 years	> 24 years
Central River Region	0	0	0	2	755	1377	0	0	4
Lower River Region	0	10	9	46	353	498	0	0	10
North Bank East Region	0	0	8	0	489	505	0	0	0
North Bank West Region	0	0	8	0	489	505	0	0	0
Upper River Region	0	1	9	0	101	649	0	2	1
Western Region 1	0	680	1436	106	2864	5556	0	10	94
Western Region 2	2	177	418	60	2457	7113	8	11	23
Total	2	868	1888	214	7508	16203	8	23	132

*Source: HMIS 2013***Table 77: Number of Family Planning Services Revisit by Method**

Region	Microgynon			Depo			Neogynon		
	< 15 years	15-24 years	> 24 years	< 15 years	15-24 years	> 24 years	< 15 years	15-24 years	> 24 years
Central River Region	2	618	917	0	826	1626	0	82	117
Lower River Region	25	218	228	15	583	906	1	50	40
North Bank East Region	7	328	600	0	491	1012	0	17	121
North Bank West Region	7	328	600	0	491	1012	0	17	121
Upper River Region	0	121	251	0	295	796	0	170	432
Western Region 1	0	1269	4152	7	2387	7002	0	4	7
Western Region 2	15	1005	1829	24	1238	2422	0	0	0
Total	56	3887	8577	46	6311	14776	1	340	838

Source: HMIS 2013

Table 78: Number of Family Planning Services Revisit by Method

Region	FOAM			IUCD			Total current Users		
	< 15 years	15-24 years	> 24 years	< 15 years	15-24 years	> 24 years	< 15 years	15-24 years	> 24 years
Central River Region	0	0	1	0	10	9	2	2886	4949
Lower River Region	0	0	0	0	0	0	124	1594	2261
North Bank East Region	0	0	0	0	5	5	0	1000	2105
North Bank West Region	0	0	0	0	5	5	1	1172	2671
Upper River Region	0	0	0	0	2	25	0	931	1540
Western Region 1	0	15	31	0	44	97	106	8740	22951
Western Region 2	0	5	27	0	0	0	105	5182	10940
Total	0	20	59	0	66	141	338	21505	47417

Source: HMIS 2013

Table 79: Number of Post Natal Care Conditions Reported by Region

REGION	Well woman			Anaemia			Post Partum Hypertension			Severe lower abdominal pain			Uncomplicated malaria		
	< 15 Years	15-24 Years	> 24 Years	< 15 Years	15-24 Years	> 24 Years	< 15 Years	15-24 Years	> 24 Years	< 15 Years	15-24 Years	> 24 Years	< 15 Years	15-24 Years	> 24 Years
Central River Region	6	1011	1155	3	88	108	0	22	23	0	38	32	0	4	19
Lower River Region	26	420	573	0	64	77	0	18	27	4	34	23	0	7	6
North Bank East Region	34	950	1133	8	117	112	1	56	52	1	30	26	1	4	5
North Bank West Region	4	1484	1438		54	94		24	36	1	22	3		9	2
Upper River Region	5	633	602	1	166	177	1	52	57	0	123	121	0	39	101
Western Region 1	61	6181	8662	0	79	100	1	235	568	2	46	50	0	29	25
Western Region 2	288	2003	2375	5	53	65	11	69	125	6	47	35	10	23	40
Total	424	12682	15938	17	621	733	14	476	888	14	340	290	11	115	198

Source: HMIS 2013

Table 80: Number of Post Natal Care conditions reported by Region- 2013

REGION	Severe malaria			Oedema			Puerperal Infection			Postpartum haemorrhag			Breast abscess		
	< 15 Years	15-24 Years	> 24 Years	< 15 Years	15-24 Years	> 24 Years	< 15 Years	15-24 Years	> 24 Years	< 15 Years	15-24 Years	> 24 Years	< 15 Years	15-24 Years	> 24 Years
Central River Region	0	0	0	22	31	32	0	10	14	3	15	26	7	13	23
Lower River Region	0	1	0		9	8	0	9	11	0	3	8	0	12	8
North Bank East Region	0	0	0	2	35	47	0	8	11	0	8	14	0	17	14
North Bank West Region	0	0	0		19	4	0	12	5	0	20	15	1	10	11
Upper River Region	2	7	42	2	49	46	0	28	28	0	34	41	0	19	6
Western Region 1	0	6	8		47	70	0	55	54	0	29	28	0	39	38
Western Region 2	5	9	9	12	30	21	4	29	30	6	15	29	4	28	22
Total	7	23	59	38	220	228	4	151	153	9	124	161	12	138	122

Source: HMIS 2013

Table 81 Number of Postnatal Care conditions reported by Region -2013

REGION	Perineal tear			Septic episiotomy			others		
	< 15 Years	15-24 Years	> 24 Years	< 15 Years	15-24 Years	> 24 Years	< 15 Years	15-24 Years	> 24 Years
Central River Region	10	33	11	0	6	2	0	12	3
Lower River Region	0	30	7	1	6	0	0	11	7
North Bank East Region	5	30	10	0	11	10	0	19	13
North Bank West Region	2	56	23	0	9	2	0	1	2
Upper River Region	1	46	11	1	46	11	0	7	0
Western Region 1	2	269	165	0	12	7	0	32	46
Western Region 2	8	9	4	1	3	2	5	8	4
	28	473	231	3	93	34	5	90	75

Source: HMIS 2013

Table 82: Obstetric/ Labour and Deliveries

CONDITIONS	REGIONS							
	CRR	LRR	NBER	NBWR	URR	WHR1	WHR2	Total
Antepartum haemorrhage	160	48	147	44	50	130	88	667

Intrapartum Haemorrhage	116	9	50	20	88	82	52	417
Pre-eclampsia	193	167	96	129	157	349	210	1301
Eclampsia Obstetric/Labour and deliveries	50	42	70	24	80	194	55	515
Abortion	188	205	104	111	133	451	172	1364
Delayed or obstructed labour	82	55	58	35	47	242	110	629
Retained placenta	21	10	5	14	14	49	3	116
Malpresentation	62	12	3	24	57	79	62	299
Ruptured uterus			4	0	0	3	1	8
Ectopic pregnancy	48	1	4	6	3	28	11	101
Deliveries requiring Interventions	77	32	90	23	17	167	54	460

Source: HMIS 2013

Table 83: Percentage of Obstetric/ Labour and Deliveries Care conditions

CONDITIONS	REGIONS							Total
	CRR	LRR	NBER	NBWR	URR	WHR1	WHR2	
Antepartum haemorrhage	23.99%	7.20%	22.04%	6.60%	7.50%	19.49%	13.19%	11.35%
Intrapartum Haemorrhage	27.82%	2.16%	11.99%	4.80	21.10%	19.66	12.47%	7.10%
Pre-eclampsia	14.83%	12.84%	7.38%	9.92	12.07%	26.83	16.14%	22.14%
Eclampsia Obstetric/Labour and deliveries	9.71%	8.16%	13.59%	4.66	15.53%	37.67	10.68%	8.76%
Abortion	13.78%	15.03%	7.62%	8.14	9.75%	33.06	12.61%	23.21%
Delayed or obstructed labour	13.04%	8.74%	9.22%	5.56	7.47%	38.47	17.49%	10.70%
Retained placenta	18.10%	8.62%	4.31%	12.07	12.07%	42.24	2.59%	1.97%
Malpresentation	20.74%	4.01%	1.00%	8.03	19.06%	26.42	31.16%	5.09%
Ruptured uterus			50.00%	0	0	37.50	12.50%	0.14%
Ectopic pregnancy	47.52%	0.99%	3.96%	5.94%	2.97%	27.72%	10.89%	1.72%
Deliveries requiring Interventions	16.74%	6.96%	19.57%	5.00%	3.70%	36.30%	11.74%	7.83%

Source: HMIS 2013

Table 84: Total number of referrals from Health facilities by Sex in 2013

	≤5 years	≥ 5 years
--	----------	-----------

REGION	M	F	M	F
Central River Region	342	374	212	928
Lower River Region	461	391	413	1265
North Bank East Region	276	223	84	583
North Bank West Region	115	137	35	287
Upper River Region	334	332	103	769
Western Region 1	257	223	169	649
Western Region 2	249	242	123	614
Total	2034	1922	1139	5095

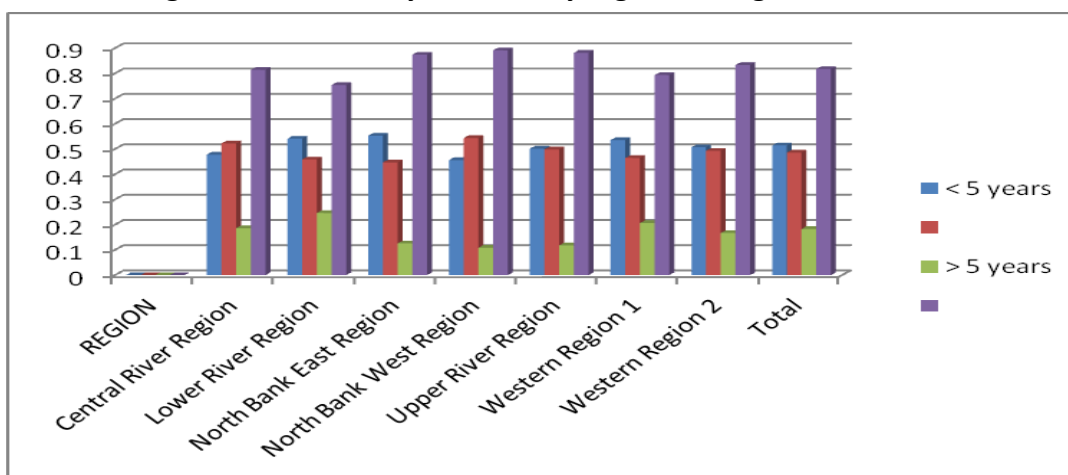
Source: HMIS 2013

Table 85: Percentage of referrals by Sex in – 2013

REGION	≤ 5 years		≥ 5 years	
	M	F	M	F
Central River Region	47.77%	52.23%	18.60%	81.40%
Lower River Region	54.11%	45.89%	24.61%	75.39%
North Bank East Region	55.31%	44.69%	12.59%	87.41%
North Bank West Region	45.63%	54.37%	10.87%	89.13%
Upper River Region	50.15%	49.85%	11.81%	88.19%
Western Region 1	53.54%	46.46%	20.66%	79.34%
Western Region 2	50.71%	49.29%	16.69%	83.31%
Total	51.42%	48.58%	18.27%	81.73%

Source: HMIS 2013

Figure 5: Percentage of health facility referrals by region and age -2013



Source: HMIS 2013

In all the regions there is more female referred out than the male counterpart. There is not much difference between the male and female under five referrals in all the regions but this is the opposite for the over fives. The female have double the male in the over five referrals in all the regions.

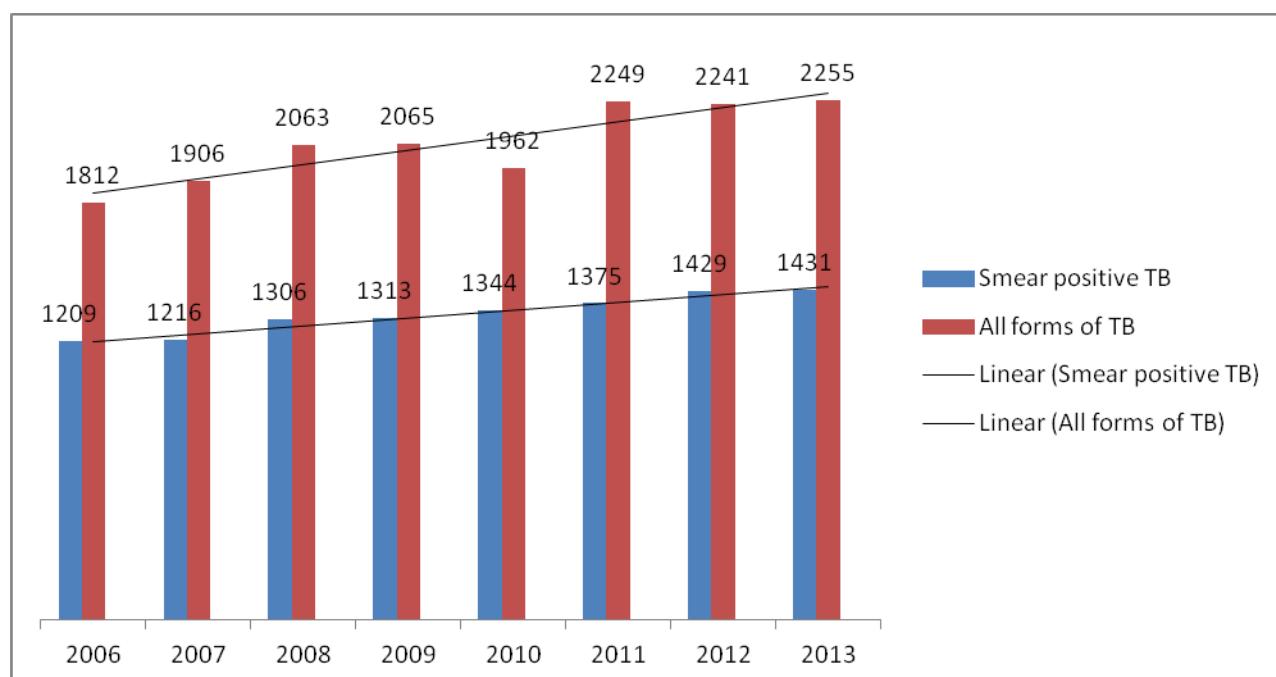
TUBERCULOSIS

Table 86: Case notification for 2013

Quarter	Smear positive	Smear negative	EPTB	Total
Jan-Mar	341	145	32	518
Apr-Jun	350	150	45	545
Jul-Sept	335	201	46	582
Oct-Dec	405	157	48	610
Total	1431	653	171	2255

Source: NLTP 2013

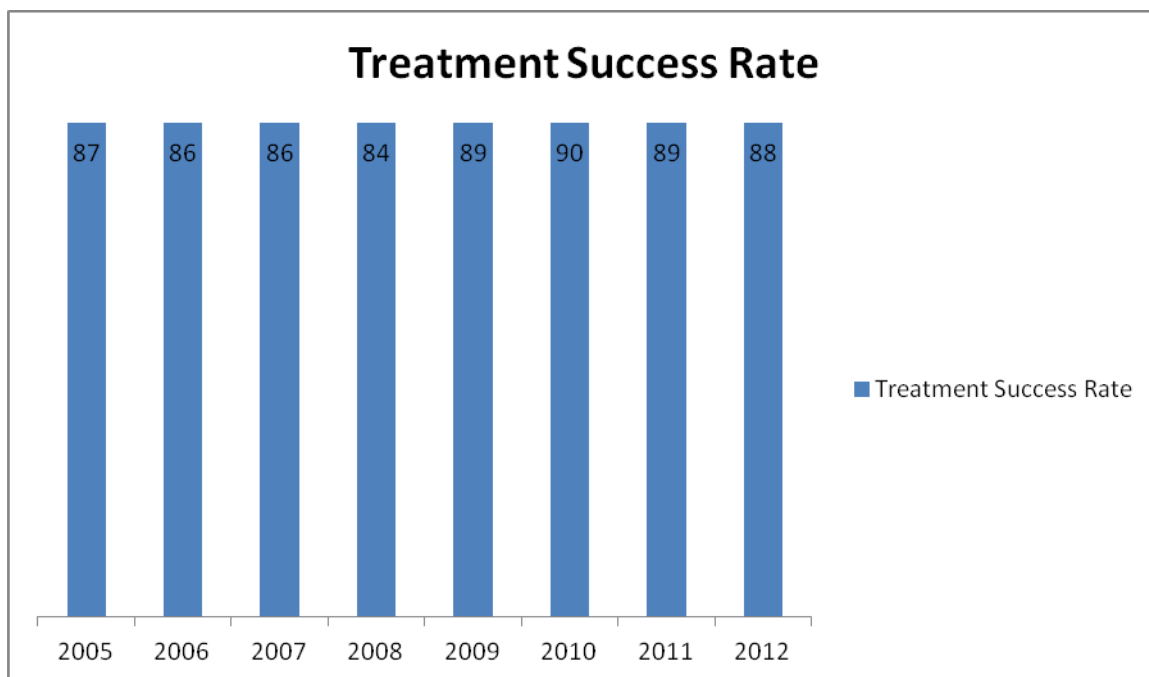
Figure 6: Chart showing the trend of TB case notification from 2006 to 2012



Source: NLTP 2013

Treatment success rate 2005-2012

Figure 7: TB Treatment success rate 2005-2012



Source: NLTP 2013

The figures above shows the trend of TB case notification from 2006 to 2013 and TB treatment success rate from 2005 to 2011. Figure Indicates that there has been smooth increase in trend of TB case notification for all forms of TB up from 1812 in 2006 to 2255 in 2013. However, the major increase in case notification TB all forms was from 1962 cases in 2010 to 2249 cases in 2011. There has also been a significant gains in TB treatment success rate from 87% in 2005 to 90% in 2010 and a slight drop in 2011 to 89%.

Table 87: Total case-notification all forms of tuberculosis NLTP by region-2013

Region	URR	Q1	30
		Q2	34

		Q3	47
		Q4	27
		TOT	138
Region	CRR	Q1	26
		Q2	24
		Q3	37
		Q4	44
		TOT	131
Retreatment Bansang Hosp		Q1	4
		Q2	0
		Q3	0
		Q4	0
		TOT	4
Region	LRR	Q1	16
		Q2	8
		Q3	20
		Q4	22
		TOT	66
Region	NBRER	Q1	15
		Q2	20
		Q3	31
		Q4	39
		TOT	105
Retreat Farafenni		Q1	1
		Q2	3
		Q3	7
		Q4	3
		TOT	14
Region	NBRWR	Q1	11
		Q2	10
		Q3	10
		Q4	12
		TOT	43
Region	WR1	Q1	274

		Q2	304
		Q3	290
		Q4	295
		TOT	1163
Retreat Sanitorium		Q1	30
		Q2	28
		Q3	24
		Q4	26
		TOT	108
Region	WR2	Q1	146
		Q2	145
		Q3	147
		Q4	171
		TOT	609
Keys			
New Cases		2255	
Retreatment		126	

Source: NLTP 2013

HIV counseling and testing

Table 88: Number of HIV Counseling and Testing by region -2013

REGION	PRETEST		TEST		POST TEST		HIV 1		HIV 2		HIV 1&2	
	M	F	M	F	M	F	M	F	M	F	M	F

CRR	703	1636	701	1629	694	1629	35	114	2	10	6	20
LRR	198	381	190	366	190	366	31	67	1	7	7	11
NBER	253	542	243	526	242	526	33	47	1	5	5	6
NBWR	218	121	215	119	212	119	9	11	2	0	0	1
URR	1783	2409	1783	2409	1783	2409	32	46	0	4	5	14
WHR 1	9923	8740	9827	8668	7515	8518	345	463	33	81	70	85
WHR 2	5574	6001	5559	5967	5559	5967	385	602	40	82	54	121
TOTAL	18652	19830	18518	19684	16195	19534	870	1350	79	189	147	258

SOURCE: NAS 2013

Table 89: Number of OPPORTUNISTIC INFECTIONS (OIs) AND ART -2013

REGION	PLHIV who received OI Prophylaxis		PLHIV who received OI Treatment		Patients on ART	
	M	F	M	F	M	F
CRR	1743	4645	176	619	76	296
LRR	230	856	108	326	13	60
NBER	1644	2317	647	712	61	134
NBWR	No ART Center in this Region					
URR	837	2086	169	238	76	193
WHR 1	3698	8941	698	1813	315	719
WHR 2	3847	9292	1624	1994	662	1401
TOTAL	11999	28137	3422	5702	1203	2803

SOURCE: NAS 2013

Table 90: Number of prevention of mother-to-child transmission (PMTCT) by region -2013

PREVENTION OF MOTHER-TO-CHILD TRANSMISSION (PMTCT)

REGION	PRETEST	TEST	POST TEST	HIV 1	HIV 2	HIV 1&2	Pregnant mother who received tripple combination	Infants born to HIV Positive mothers	Infants exposed to HIV who are tested at 18 months	Infants tested Positive
CRR	5956	5882	5882	56	7	9	71	20	2	0
LRR	1202	1191	1191	21	7	2	21	11	9	0
NBER	2732	2700	2700	9	3	4	12	12	0	0
NBWR	2162	2124	2118	14	6	3	23	1	1	0
URR	5931	5662	5662	27	1	5	33	33	18	1
WHR 1	19420	19043	19037	283	27	29	339	214	97	6
WHR 2	13843	13646	13643	190	24	16	230	122	73	16
TOTAL	51246	50248	50233	600	75	68	729	413	200	23

SOURCE: NAS 2013

17.2: LABORATORY SERVICES:

Table 91: Number of Laboratory Test conducted in Central River Region-2013

	ANC	< 5 years		> 5 years	
	F	M	F	M	F
HB Test	9617	2169	1366	3153	7314
Urinalysis	2711	94	165	821	2682
Blood film	300	3075	3031	3235	7334
Blood film positive					
Blood film negative					
Sickle cell	115	96	94	219	351
RPR	3504	501	515	695	1713
TPHA			1	2	2
Stool microscopy	248	1		32	160
No. of cases tested for AFB		1	7	333	273
No. of AFB positive				85	73
Blood grouping	834	207	155	535	965

No. blood donation		65	4	723	54
No. blood transfused	567	202	156	238	381

SOURCE: HMIS 2013

Table 92: Number of Laboratory Test conducted in Lower River Region-2013

	ANC	< 5 years		> 5 years	
	F	M	F	M	F
HB Test	3820	2342	2335	3606	7746
Urinalysis	1142	251	202	618	1504
Blood film	277	640	517	1405	2351
Blood film positive	0	0	0	0	0
Blood film negative	0	0	0	0	0
Sickle cell	26	89	93	150	205
RPR	799	25	33	251	628
TPHA	13	0	0	10	11
Stool microscopy	41	82	89	204	312
No. of cases tested for AFB	24	2	1	208	204
No. of AFB positive	4	0	0	39	9
Blood grouping	143	36	31	296	98
No. blood donation	0	0	0	149	6
No. blood transfused	64	88	17	44	41

SOURCE: HMIS 2013

Table 93: Number of Laboratory Test conducted in North Bank East Region -2013

	ANC	< 5 years		> 5 years	
	F	M	F	M	F
HB Test	5076	1699	1864	3294	5924
Urinalysis	1611	75	66	485	1165
Blood film	44	639	566	1608	2151
Blood film positive	0	0	0	0	0
Blood film negative	0	0	0	0	0
Sickle cell	411	13	7	51	45
RPR	520	25	30	60	235
TPHA	15	0	0	0	4
Stool microscopy	2	8	4	52	111
No. of cases tested for AFB	0	0	0	314	346
No. of AFB positive	0	0	0	46	20
Blood grouping	676	39	19	677	651
No. blood donation	0	0	0	563	1
No. blood transfused	301	28	17	49	109

SOURCE: HMIS 2013

Table 94: Number of Laboratory Test conducted in North Bank West Region-2013

	ANC	< 5 years		> 5 years	
	F	M	F	M	F
HB Test	5835	1186	1699	2684	6107
Urinalysis	2259	10	24	73	253
Blood film	30	348	405	701	1142
Blood film positive	0	0	0	0	0
Blood film negative	0	0	0	0	0
Sickle cell	226	20	14	35	61

RPR	1715	32	37	122	292
TPHA	120	0	0	12	35
Stool microscopy	23	0	16	59	302
No. of cases tested for AFB	1	22	13	186	159
No. of AFB positive	0	1	0	44	19
Blood grouping	28	23	37	198	244
No. blood donation	0	16	0	217	5
No. blood transfused	23	10	26	15	119

SOURCE: HMIS 2013

Table 95: Number of Laboratory Test conducted in Upper River Region-2013

	ANC	< 5 years		> 5 years	
	F	M	F	M	F
HB Test	8401	740	1161	1426	3892
Urinalysis	2120	158	369	570	1321
Blood film	11	415	365	672	981
Blood film positive	0	0	0	0	0
Blood film negative	0	0	0	0	0
Sickle cell	3	81	56	155	316
RPR	666	23	27	54	164
TPHA	0	0	0	0	0
Stool microscopy	45	0	2	124	321
No. of cases tested for AFB	2	36	35	301	212
No. of AFB positive	2	14	3	63	24
Blood grouping	96	471	300	327	523

No. blood donation	50	513	116	392	129
No. blood transfused	50	143	318	89	397

SOURCE: HMIS 2013

Table 96: Number of Laboratory Test conducted in Western Health Region2-2013

	ANC	< 5 years		> 5 years	
	F	M	F	M	F
HB Test	13483	4375	5261	8712	18940
Urinalysis	3556	76	99	429	1174
Blood film	391	4410	3920	9428	15901
Blood film positive	0	0	0	0	0
Blood film negative	0	0	0	0	0
Sickle cell	25	269	217	961	912
RPR	1561	397	314	906	5468
TPHA	62		1	0	1
Stool microscopy	198	1	0	6	16
No. of cases tested for AFB	3	10	9	610	608
No. of AFB positive		4	1	174	127
Blood grouping	116	106	62	184	115

No. blood donation	0	0	0	676	8
No. blood transfused	0	223	56	200	539

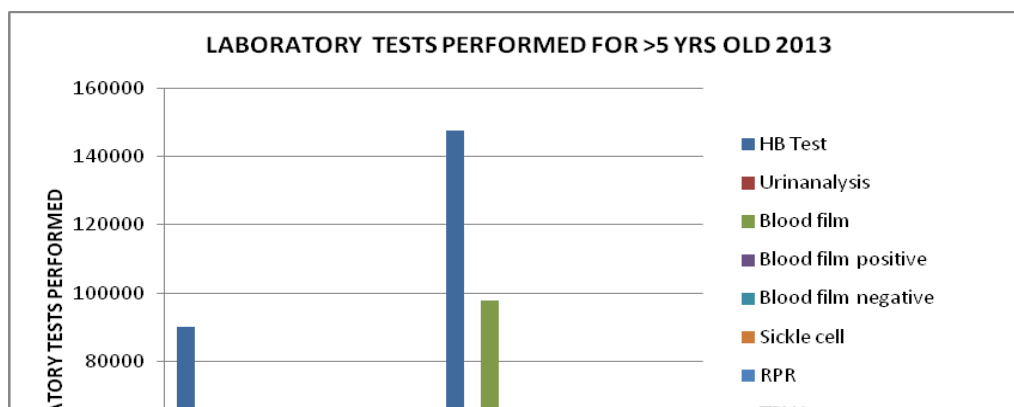
SOURCE: HMIS 2013

Table 97: Number of Laboratory Test conducted in Western Health Region1-2013

	ANC	< 5 years		> 5 years	
	F	M	F	M	F
HB Test	34834	25042	26776	67276	97527
Urinalysis	16496	315	543	5019	13881
Blood film	3827	19528	19939	46694	67910
Blood film positive	0	0	0	0	0
Blood film negative	0	0	0	0	0
Sickle cell	4652	452	443	2629	3333
RPR	10818	1061	1194	2883	4250
TPHA	389	23	25	46	51
Stool microscopy	183	25	20	405	153
No. of cases tested for AFB	0	1	1	2256	1434
No. of AFB positive	0	0	12	451	233
Blood grouping	4158	38	19	936	773
No. blood donation	144	1	2	973	233
No. blood transfused	128	7	14	980	202

SOURCE: HMIS 2013

17.2.8: Laboratory tests performed for above fives in 2013



SOURCE: HMIS 2013

Analyses of Laboratory Tests Performed in 2013

HB tests accounted for most of the laboratory tests performed for Antenatal, followed by Urine analysis and then RPR as shown in the summary graphs above. However, for under and above 5 years old, blood film tests were the second highest followed by Urine analysis.

NB: Data from EFSTH IS EXCLUDED

CHAPTER 15

PUBLIC HEALTH INSPECTIONS AND IMMUNIZATIONS

PUBLIC HEALTH INSPECTIONS

Table 98: Number of meat inspections -2013

REGION	Number of animals slaughtered	Number of carcasses inspected	Number of carcasses passed
Central River Region	2979	2967	2939
Lower River Region	5257	5257	5254
North Bank East Region	1135	1115	1101
North Bank West Region	133	132	132
Upper River Region	791	719	706
Western Region 1	215	117	133
Western Region 2	4206	4202	4192
Total	14716	14509	14457

Source: HMIS 2013

Table 99: Number of Complaints by Region

REGION	infestations	Animals	Solid refuse	Liquid refuse	Food and/or water	Air pollution	other
Central River Region	11	34	45	90	44	6	0
Lower River Region	4	2	40	51	35	0	0
North Bank East Region	5	11	14	25	27	5	4
North Bank West Region	59	17	31	18	10	6	0
Upper River Region	20	29	119	182	96	7	1
Western Region 1	51	24	109	108	97	3	7
Western Region 2	43	9	39	34	52	23	0
Grand Total	193	126	397	508	361	50	12

Source: HMIS 2013

Table 100: Number of Doses of Vaccines administered by region in 2013

	Central River Region				Lower River Region				North Bank East Region			
	< 1 Year old		≥ 1 Year old		< 1 Year old		≥ 1 Year old		< 1 Year old		≥ 1 Year old	
	M	F	M	F	M	F	M	F	M	F	M	F
BCG	5438	5207	0	0	1877	1848	0	0	2620	2273	0	0

Hepatitis B	5628	5438	1	1	1810	1778	0	0	2620	2258	0	0
PENTA 1	5920	5432	1	2	2096	1927	1	1	2843	2442	1	1
PENTA 2	5615	5311	8	8	2103	2009	7	7	2596	2413	0	0
PENTA 3	5618	5307	11	15	2095	2009	14	8	2659	2419	0	0
Polio 0	5312	5134	0	0	1874	1845	0	0	2620	2249	0	0
Polio 1	5543	5082	1	2	2092	1965	1	1	2842	2442	1	1
Polio 2	5204	4999	6	8	2218	1972	20	12	2594	2404	0	0
Polio 3	5380	5014	25	25	2099	2009	18	11	2659	2409	0	0
Polio 4 Plus	5005	4831	2405	2244	1967	1930	1183	1156	2645	2500	1240	1107
Measles 1	5386	5192	76	60	2025	1983	118	117	2644	2508	3	1
Measles 2	59	95	2410	2156	33	31	1483	1397			1600	1425
Yellow fever	5435	5229	63	47	2017	1981	154	142	2669	2458	1	16
Pneumococcal 1	5950	5479	23	15	2142	2029	15	13	2843	2432		1
Pneumococcal 2	5645	5318	7	5	2147	2060	22	12	2596	2433		
Pneumococcal 3	5650	5341	22	26	2117	2051	22	20	2659	2409		
DPT Booster			3474	3104	25	22	1426	1347	133	27	1882	1727
TT 1		383		1883	10	747			10	16	25	970
TT 2 Plus		1251		6679	24	2367						2886

Source: HMIS 2013

Table 101: Number of Doses of Vaccines administered by region in 2013

	NBWR				URR				WHR1			
	< 1 Year old		≥ 1 Year old		< 1 Year old		≥ 1 Year old		< 1 Year old		≥ 1 Year old	
	M	F	M	F	M	F	M	F	M	F	M	F
BCG	2207	2205	69	67	5925	5888	4	4	13717	13738	1	2
Hepatitis B	2197	2206	27	37	5996	5934		1	13742	15122	1	
PENTA 1	2462	2216	4	6	6290	5662	14	10	14237	13244	5	1
PENTA 2	2447	2354	16	12	5938	5497	7	6	13968	12897	8	2
PENTA 3	2267	2226	15	13	6054	5591	12	6	13360	12276	14	23
Polio 0	2190	2195			5900	5762		2	13519	13549	31	19
Polio 1	2482	2179			6238	5619	11	6	14323	12729	3	2
Polio 2	2424	2333	1		5806	5379	8	5	13956	12871	6	2
Polio 3	2245	2173	45	60	5904	5427	11	7	13466	12514	21	70
Polio 4 Plus	2346	2407	1188	1121	5831	5455	3978	3630	12266	11750	7194	6482
Rota 1	0	0	0	0	0	0	0	0	1516	1381	0	0
Rota 2	0	0	0	0	0	0	0	0	1484	1578	0	0
Rota 3	0	0	0	0	0	0	0	0	1082	1033	0	0
Measles 1	2291	2306	48	55	5755	5408	57	138	12428	11802	189	152

Measles 2	260	248	1074	970			3444	3188	142	155	6861	6195
Yellow fever	2271	2293	8	22	6023	5585	55	49	12540	12036	87	79
Pneumococcal 1	2278	2078	8	4	6390	5656	8	4	14112	12642	5	1
Pneumococcal 2	2164	2086			5894	5467	8	8	13425	12378	8	1
Pneumococcal 3	2047	1941	10	10	5935	5426	8	7	13557	11856	19	23
EPI DPT Booster		2	1982	1322	60	66	4355	3843	18	13	8139	7664
TT 1	42	765	78	76		16		2641	92	353	8	7353
TT 2 Plus	135	2518	266	213		57		8466	180	968	21	17291

Source: HMIS 2013

Table 102: Number of Doses of Vaccines administered by region in 2013

	WHR 2			
	≤ 1 Year old		≥ 1 Year old	
BCG	6572	6307	427	0
Hepatitis B	6584	6341	427	0
PENTA 1	6904	5615	389	0
PENTA 2	6483	5461	2	1
PENTA 3	6176	5221	14	6
Polio 0	6578	6336	427	0
Polio 1	6892	5551	1	0
Polio 2	6512	5459	2	1
Polio 3	6207	5238	8	5
Polio 4 Plus	8436	5583	3301	2682
Rota 1	237	218	0	0
Rota 2	220	238	0	0
Rota 3	135	132	0	0
Measles 1	6530	5573	1006	183
Measles 2	136	106	4051	3397
Yellow fever	6486	5569	774	27
Pneumococcal 1	6550	5288	0	2
Pneumococcal 2	6097	5142	3	2
Pneumococcal 3	5778	5101	5	3
EPI DPT Booster	108	46	3693	3062
TT 1	1892	801	0	414
TT 2 Plus	4554	968	21	943

Source: HMIS 2013

Table 103: Number of doses of Antigen consumed by region – 2013

	CRR	LRR	NBER	NBWR	URR	WHR 1	WHR 2	TOTAL
BCG	23248	10252	12491	11237	24200	47126	16671	145225
DPT	7447	2742	4042	5695	9145	17336	7359	53766
Penta	33352	10544	15109	14520	32964	74728	34702	215919
Pneumo	30727	10918	14972	13223	33403	73209	33473	209925
Polio	65410	21430	29025	25614	67608	145127	63754	417968
Measles	19831	8830	10436	10168	21260	44136	23610	138271
Yellow fever	15699	6330	7653	7175	15760	33770	13271	99658
Hep B	13207	3312	5079	4500	13159	26975	12565	78797
TT	10753	3124	4545	4274	12030	27019	9673	71418
Rota	0	0	0	0	0	0	0	0
Vit A (blue caps)	13348	3658	4559	3860	12682	25992	12876	76975
Vit A (red caps)	30108	9246	12165	12265	29678	56371	23863	173696
Mebendazole 500mg	9260	4463		9611	872	15938	3862	44006
AD Syringes BCG	13709	4040	6219	5944	21600	37340	15299	104151
AD Syringes 0.5ml	109575	39959	55717	46510	133302	266838	122636	774537
Dilution syringes	8317	6728	3004	8741	7771	15382	5913	55856
Safety boxes	1082	760	627	776	1989	3116	2429	10779

Source: HMIS 2013

Table 104: PERCENTAGE OF ANTIGEN OF COVERAGE IN 2013

ANTIGEN	TARGET POPULATION	TOTAL IMMUNIZED	COVERAGE
BCC	81830	79803	98%
PENTA 1	75775	76533	101%
PENTA 3	75775	73502	97%
PNEUMO 1	75775	75775	100%
PNEUMO 3	75775	71986	95%
MCV	75775	72744	96%
MCV 2	75775	40057	53%
YELLOW FEVER	75775	73502	97%
TT2+	81830	47460	58%
POLIO E	75775	72744	96%

Source: HMIS 2013

In 2013, PENTA 1 has the highest Immunization coverage with 101%, followed by PNEUMO 1 (100%). All the antigens have above the 90% except MCV2 and TT2+ which has 53% and 58% respectively.

Table 105: Number of doses of Vitamin A. administered by region - 2013

REGION	Vitamin A. 6 - 11 Months		Vitamin A. 12 - 59 Months		Vitamin A. Post Partum
	M	F	M	F	F
Central River Region	4750	4529	9273	9549	9633
Lower River Region	1879	1700	3883	3746	2515
North Bank East Region	2407	2201	5314	5049	4166
North Bank West Region	1727	1702	5702	5630	5117
Upper River Region	6313	5726	12548	12072	10423
Western Region 1	13459	12084	22421	20222	19921
Western Region 2	6359	5626	10324	10020	11180
Total	36894	33568	69465	66288	62955

Source: HMIS 2013

In 2013, vitamin A 12 to 59 months has the highest number of doses administered and Western Region 1 administered the highest among the regions

CHAPTER 16

VILLAGE HEALTH SERVICES

19: VILLAGE HEALTH SERVICES

In 2013, 71,241 patients were seen by Village Health Workers (VHW), out of which, 51.6% were males. There were more male patients seen in all the regions. Despite the fact that majority of Gambian population live in WHR 1, the region has reported the least number of attendance (0.19%). This might be attributed to the limited number of VHWs in WHR 1 as compared to other regions. CRR and NBER reported about a quarter (25.7%) of the total attendance and have the highest attendance in both males and females. LRR has the second lowest in terms of attendance representing (11.6%). CRR, URR and NBER represent 21.4%, 19% and 13.9% of the total attendance respectively

Table 106: Total number of patients seen by the Village Health Workers per region in – 2013

	Male	%	Female	%	TOTAL	%
Central River Region	8219	22	7521	22	15740	22
Lower River Region	3609	10	3379	10	6988	10
North Bank East Region	8142	22	7523	22	15665	22
North Bank West Region	7958	22	7378	21	15336	22
Upper River Region	7604	21	7206	21	14810	21
Western Region 1	76	0	59	0	135	0
Western Region 2	1182	3	1385	4	1567	4
Total	36790	100	34451	100	71241	100

Source: HMIS 2013

In the table above CRR, NBWR, NBER registered the highest number of patients seen by the VHWs and WCR1 had the least patient seen by the VHWs.

Table 107: Number of Suspected measles reported by the Village Health Workers by region – 2013

REGION	< 5 yrs		> 5 yrs		TOTAL
	Male	Female	male	Female	
Central River Region	0	0	1	0	1
Lower River Region	1	1	2	1	5
North Bank East Region	0	0	0	0	0
North Bank West Region	8	2	10	2	22
Upper River Region	0	0	0	0	0
Western Region 1	0	0	0	0	0

Western Region 2	0	0	0	0	0
Total	9	11	5	11	29

Source: HMIS 2013

NBWR reported the highest suspected measles cases in both the under 5 and above 5 of the total suspected measles representing 83.3%. NBER, URR, WHR1 and WHR2 did not record any suspected measles cases in the period. LRR and CRR represent 13.9 % and 2.8% respectively of the total suspected measles cases.

Table 108: Number of Fast breathing reported by the Village Health Workers by region – 2013

Regions	< 5 yrs		> 5 yrs		Overall Totals	
	Male	Female	Male	Female	Totals	%
Central River Region	184	252	160	163	759	45%
Lower River Region	14	0	15	1	30	2%
North Bank East Region	50	109	39	57	255	15%
North Bank West Region	75	45	49	37	206	12%
Upper River Region	25	15	23	17	80	5%
Western Region 1	0	0	0	0	0	0%
Western Region 2	107	72	134	47	360	21%
Totals	455	493	420	312	1680	100%

Source: HMIS 2013

Table 109: Number of Diarrhoea cases reported by the Village Health Workers by Region – 2013

REGION	< 5 years		>5 years	
	Male	Female	Male	Female
Central River Region	672	623	54	46
Lower River Region	198	162	0	0
North Bank East Region	243	197	55	43
North Bank West Region	298	298	5	4
Upper River Region	438	407	33	32
Western Region 1	1	0	0	0
Western Region 2	124	120	23	21
Total	1974	1807	170	146

Source: HMIS 2013

In 2013 CRR has the highest number of diarrhoeal cases registered by VHWs (34%) and the least among the regions is WNR1 (0%)

Table 110: Number of Uncomplicated malaria confirmed with RDT reported by the Village Health Worker- 2013

Organisation unit	< 5 yrs		> 5 yrs	
	Male	Female	Male	Female
Central River Region	184	252	160	163
Lower River Region	14	0	15	1
North Bank East Region	50	109	39	57
North Bank West Region	75	45	49	37
Upper River Region	25	15	23	17
Western Region 1	0	0	0	0
Western Region 2	107	72	134	47
Total	455	493	420	312

Source: HMIS 2013

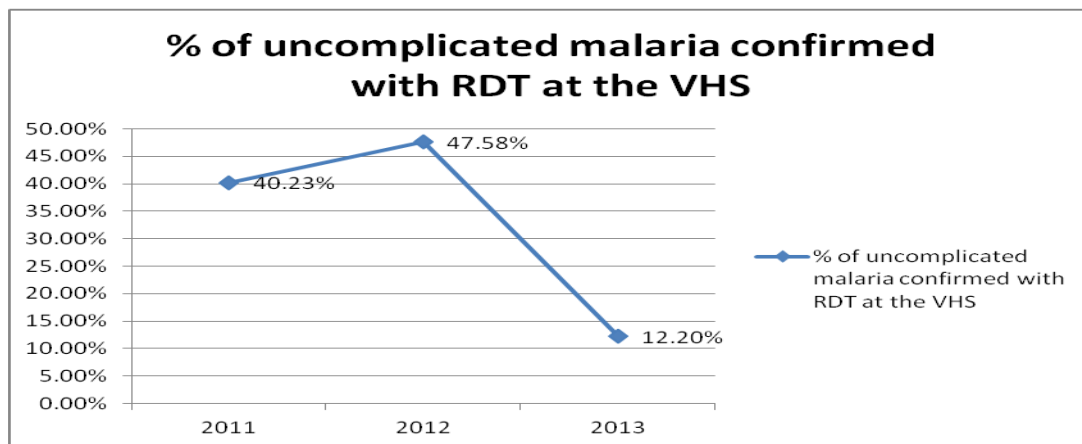
In the table above CRR has the highest number of uncomplicated malaria confirmed with RDT reported by the Village Health Worker (45%) whilst WNR1 has the least cases reported (0%)

Table 111: Number of Pregnant women with uncomplicated malaria confirmed with RDT reported by the Village Health Workers

REGION	Number of cases
Central River Region	4
Lower River Region	1
North Bank East Region	0
North Bank West Region	9
Upper River Region	0
Western Region 1	0
Western Region 2	17
Total	21

SOURCE: HMIS 2013

19.1.7: Percentage of uncomplicated Malaria confirmed with RDT at the Village Health worker.



Source: HMIS 2013

From 2011 -2013 it can be seen that there is small percentage of increment in 2012 but a sharp drop in 2013 from 47.58% to 12.20%.

FAMILY PLANNING SERVICES

Table 112: Condom consumption at the VHS

REGION	Number of Client given Condoms		Number Of Condoms issued	
	Male	Female	male	Female
Central River Region	2565	167	7337	353
Lower River Region	1589	28	6782	128
North Bank East Region	423	14	1516	9
North Bank West Region	1594	69	5729	154
Upper River Region	1168	138	6056	156
Western Region 1	1062	8	5195	5
Western Region 2	1034	45	4824	0
TOTAL	9435	469	37439	805

SOURCE: HMIS 2013

In the table above showing the condom consumption at VHS in which CRR reported highest number of condom issue while WCR1 reported the lowest.

Table 113: Number of Referrals by VHWs to the health facilities

REGION	< 5 years		> 5 years	
	Male	Female	Male	Female
Central River Region	1493	1577	1249	1211
Lower River Region	1085	1199	782	741
North Bank East Region	1837	1763	1617	1654
North Bank West Region	905	828	750	609
Upper River Region	1479	1515	1121	1201
Western Region 1	249	231	207	218
Western Region 2	785	821	591	562
TOTAL	7833	7934	6317	6196

SOURCE: HMIS 2013

Table 114: Home Visits by TBAs

REGIONS	VHW Home Visit (No .Of Compounds)	TBA Antenatal Visits
Central River Region	6038	4149
Lower River Region	4008	4091
North Bank East Region	7032	5141
North Bank West Region	7258	3265
Upper River Region	3909	10164
Western Region 1	1635	596
Western Region 2	4562	3804
Total	34442	31210

SOURCE: HMIS 2013

Table 115: Postpartum care services conducted by the TBAs

REGION	Post Natal Visits Made (female only)	Neonatal Conjunctivitis		Neonatal Tetanus	
		F	M	F	M
Central River Region	15091	5	10	0	1
Lower River Region	9538	6	11	0	0
North Bank East Region	11427	3	0	0	0
North Bank West Region	12163	0	0	0	0
Upper River Region	30875	10	36	1	1
Western Region 1	1688	9	3	0	0

Western Region 2	10973	1	3	0	0
Total	91755	34	63	1	2

SOURCE: HMIS 2013

Table 116: Family planning services conducted by the TBAs

REGION	Motivations Given		Referrals For Family Planning		Women Given Pills	Cycles Of Pills Issued
	M	F	M	F	F	
Central River Region	29	388	18	288	525	810
Lower River Region	20	390	1	137	115	240
North Bank East Region	7	100	2	140	70	116
North Bank West Region	8	318	13	148	172	435
Upper River Region	74	934	36	695	1150	1565
Western Region 1	160	203	46	131	165	486
Western Region 2	83	577	14	239	186	485
Total	381	2910	130	1778	2383	4137

SOURCE: HMIS 2013

Table 117: Number of Referrals by the TBAs to health facilities

REGION	< 5 yrs		> 5 yrs	
	Male	Female	Male	Female
Central River Region	5	83	9	83
Lower River Region	0	0	0	0
North Bank East Region	1	265	5	265
North Bank West Region	41	616	63	616
Upper River Region	111	100	103	100
Western Region 1		21	1	21
Western Region 2	9	35	3	35
Total	167	1120	184	1120

SOURCE: HMIS 2013

Table 118: Number of Supervisory visits and Clinical activities conducted by the CHN

REGION	CHN Supervisory Visits	CHN RCH Clinics Attended	CHN Mothers With identified problems visited
Central River Region	2400	726	207
Lower River Region	1348	468	109
North Bank East Region	2262	489	61
North Bank West Region	1709	449	42
Upper River Region	2344	637	324
Western Region 1	347	217	95
Western Region 2	1351	410	72
Total	11761	3396	910

Source: HMIS 2013

Table 119: Number of Other activities conducted by the CHN

REGION	CHN community meetings attended	CHN others (include all IEC activities)
Central River Region	347	635
Lower River Region	82	177
North Bank East Region	69	476
North Bank West Region	116	312
Upper River Region	185	329
Western Region 1	5	9
Western Region 2	137	207
Total	941	2145

SOURCE: HMIS 2013

Table 120: Number of At risk children visited by the CHN

REGION	< 5 y ears		> 5 yrs Male	
	Male	Female	Male	female
Central River Region	402	492	5	3
Lower River Region	393	450	1	0
North Bank East Region	165	216	4	0
North Bank West Region	291	430	5	9

Upper River Region	403	513	13	12
Western Region 1	108	100	25	25
Western Region 2	165	198	8	5
Total	1927	2399	61	54

SOURCE: HMIS 2013

Table 121: Number of TB patients receiving DOTS in the Village Health Services

Region	< 5 years		> 5 years	
	Male	Female	Male	Female
Central River Region	19	15	105	29
Lower River Region	0	0	114	26
North Bank East Region	4	0	105	47
North Bank West Region	31	32	27	44
Upper River Region	5	4	139	78
Western Region 1	71	64	202	125
Western Region 2	11	11	263	162
Total	141	126	955	511

SOURCE: HMIS 2013

Table 122: Number of Deaths reported by the Village Health Services – 2013

REGION	Infant Deaths		< 5 yrs		> 5 yrs		TBA Maternal Deaths
	Male	Female	Male	Female	Male	Female	Female
Central River Region	24	24	31	24	103	91	10
Lower River Region	14	22	13	15	127	86	5
North Bank East Region	5	5	7	16	107	91	2
North Bank West Region	8	9	25	14	40	51	6
Upper River Region	17	8	34	12	131	120	5
Western Region 1	8	3	8	13	25	15	0
Western Region 2	16	6	10	11	43	59	1
Total	92	77	128	105	576	513	29

Source: HMIS 2013

CRR reported the highest number of maternal deaths accounting for more than a quarter (34.82%) and followed by NBWR which accounts for 20.69% of the total number of maternal deaths. WHR 1 and WHR2 reported the lowest number of maternal deaths accounting for 0% and 3.45% respectively. NBWR and URR account for 5.6% and 4.2%.

For infant deaths, CRR reported the highest in both males and females accounting for 28.40% and NBER, the lowest accounting for 5.92%. More infant deaths were reported in males accounting for 54.44%.

For under- five deaths, more males were reported constituting more than half of the total (57.94%). CRR reported the highest in the under five deaths representing 23.61% and both WHR1 and WHR2 recorded 9.01% each making the lowest regions to register total under-five deaths. For deaths in the above five years, deaths reported among male were slightly higher than in females representing 52.89% and 47.11% respectively. URR reported the highest number of deaths in this age category constituting 23.05% and WHR1, the lowest 3.67%.

CHAPTER 17

DRUG COMSUMPTION

Table 123: CONSUMPTION OF ESSENTIAL MEDICINES BY REGION 2013

REGION	WHR	NBER	NBWR	LRR	CRR	URR	TOTAL
Artemether-lummefantrine 20/120 mg (6 tabs)	18,880	1,279	1,505	2,791	2,946	9,017	36,418
Artemether-lummefantrine 20/120 mg (12 tabs)	14,542	1,038	1,520	1,185	1,801	7,870	27,956
Artemether-lummefantrine 20/120 mg (18 tabs)	18,784	1,228	1,255	880	2,340	7,339	31,826
Artemether-lummefantrine 20/120 mg (24 tabs)	55,011	2,370	2,560	4,322	4,998	17,377	86,638
Rapid Diagnostic Test (RDT)	235,469	28,277	27,348	36,345	35,710	109,594	472,743
Quinine Sulphate 300mg tab	44,693	10,912	8,400	14,037	17,559	23,951	119,552
Quinine Sulphate 300mg /2ml(AMP)	9,566	1,286	449	2,385	1,648	11,534	26,868
Paracetamol 500 mg tabs	2,240,634	620,371	676,839	746,003	700,499	759,730	5,744,076
Paracetamol 100mg tab	1,690,330	337,286	453,111	380,908	530,973	480,305	3,872,913
Sulphadoxine+Pyrimethamine 500+25mg (3 tabs)	84,916	14,165	16,137	38,523	57,596	40,515	251,852
Ferrous sulphate+Folic Acid 200mg tab	1,007,380	352,739	458,801	403,438	630,679	644,783	3,497,820
Oral Rehydrated Salts (SHT)	61,207	13,308	11,195	14,301	15,319	22,634	137,964
Magnesium sulphate injection 50% Amp	3,268	204	73	999	254	854	5,652
Oxytocin 10IU/ML Amp	5,320	865	920	4,366	2,727	1,850	16,048
Cotrimoxazole 480mg tab	1,479,959	339,853	347,840	440,881	515,687	644,159	3,768,379
Amoxicillin 250mg cap	1,058,754	360,349	321,890	423,598	469,075	590,730	3,224,396

Benzylpenicillin Sodium 1mu (Vial)	24,371	6,525	4,593	7,016	9,750	12,560	64,815
Mebendazole 500MG tab	64,634	30,083	21,665	10,863	44,216	34,233	205,694
Tetracycline Eye Oint 1% (TUBE)	3,894	837	1,177	1,608	603	644	8,763

Source: HMIS 2013

Table 124: CONSUMPTION OF ESSENTIAL MEDICINES BY HOSPITAL 2013

	EFSTH	SEREKUNDA HOSPITAL	SJGH	JFPH	AFPRC	Ngo Prsec
Artemether-lumefantrine 20/120 mg (6 tabs)	3,162	2,782	1,145	3,141	554	5,894
Artemether-lumefantrine 20/120 mg (12 tabs)	1,917	862	458	5,160	212	4,448
Artemether-lumefantrine 20/120 mg (18 tabs)	2,010	1,585	939	2,288	321	3,858
Artemether-lumefantrine 20/120 mg (24 tabs)	4,632	8,717	2,246	20,256	1,515	11,530
Rapid Diagnostic Test (RDT)	13,520	34,999	22,311	88,206	14,949	20,467
Quinine Sulphate 300mg tab	27,210	6,224	3,258	9,220	5,593	6,921
Quinine Sulphate 300mg /2ml(AMP)	6,960	7,135	1,247	2,870	1,256	1,445
Paracetamol 500 mg tabs	886,000	732,504	387,560	678,438	420,323	452,247
Paracetamol 100mg tab	271,000	180,598	74,986	312,090	111,577	140,634
Sulphadoxine+Pyrimethamine 500+25mg (3 tabs)	33,000	2,533	4,186	22,200	-	19,368
Ferrous sulphate+Folic Acid 200mg tab	240,000	159,402	157,993	141,437	108,177	267,254
Oral Rehydrated Salts (SHT)	27,950	10,787	4,145	17,712	5,815	7,646
Magnesium sulphate injection 50% Amp	1,980	358	30	10	271	90
Oxytocin 10IU/ML Amp	13,160	5,035	422	5,300	1,700	470
Cotrimoxazole 480mg tab	704,030	453,955	440,567	445,275	283,386	680,620
Amoxicillin 250mg cap	1,064,000	408,150	505,100	252,710	308,948	308,361
Benzylpenicillin Sodium 1mu (Vial)	53,550	20,180	39,305	5,100	12,747	4,013

Mebendazole 500MG tab	11,600	8,972	10,761	12,584	6,301	18,479
Tetracycline Eye Oint 1% (TUBE)	-	1,996	3,463	1,571	1,055	917

Source: HMIS 2013

Table 125: Top causes of Inpatient admissions-2013

Diseases	Percentages
Severe confirmed Malaria	27.87%
Severe Pneumonia	24.42%
Anemia	8.24%
Hypertension	5.18%
Serious possible bacterial infection	2.42%
Skin disorders	2.20%
Pregnancy Induced hypertension	1.66%
Cataracts	1.60%
Asthma	1.50%
Diabetes	1.47%
Virginal discharge	1.42%
Diarrhea with blood/mucus (Dysentery)	1.01%
Burns	0.83%
Cardiac disorders	0.81%

Source: HMIS 2013

Table 126: Top causes of outpatients morbidity in 2013

Disease	Percentages
Uncomplicated malaria	29.00%
Skin disorders	13.79
Hypertension	7.88%
Conjunctivitis	3.47
Aneamia	2.94%
Toothache	2.80%
diarrhoea with blood/mucus (Dysentry)	2.40%
Lower abdominal pain in pregnancy	2.23%
Asthama	1.24%
Epilepsy	1.17%
Helminth infestation	1.14%

Eye infection < 5years	1.13%
dental abscess	1.00%
Diabetes	0.78%
Aneamia in pregnancy	0.77%

Source: HMIS 2013