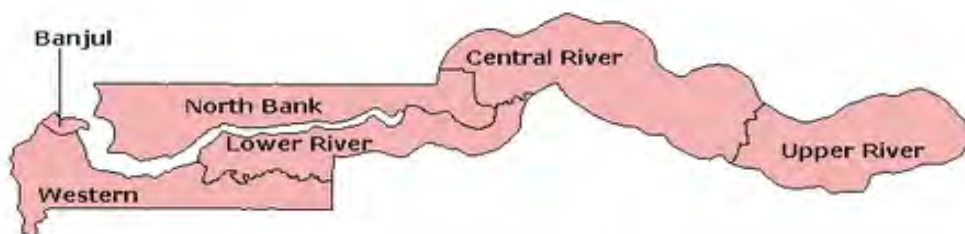


Service Statistics Report 2014



Republic of The Gambia

Ministry of Health & Social Welfare Directorate of Planning & Information



National Health Management Information System

September, 2015

Authors

Sowe, Musa M.M.

Head HMIS

Specialist Health Information / Clinical Coding & Program Planning, Monitoring & Evaluation.

Master of Health Information Management, MSc. Public Health, Graduate Certificate Clinical Classification, BSc. Public & Environmental Health (Honours), Diploma Public Health (Distinction) & Certificate Public Health

Email: sowemusamm@hotmail.com, sowemusamm@gmail.com, musammsowe@yahoo.co.uk,

Tel: (220) 9933557, 2055289, 6544297 & 3267246

Keita, Nfamara

Senior Health Information Officer

Bachelors of Science Public & Environmental Health

Email: knfamara@yahoo.com

Tel: (220) 6423839, 9432997

Bah, Abdoulie

Health Statistician

Bachelors of Science Mathematics and Physics

Email: abdoulie52000@yahoo.com

Tel: (220) 6706828, 7702237

Jallow, Fatoumatta

Health Statistician

Bachelors of Science Mathematics and Economics

Email: fajalow@gmail.com

Tel: (220) 9984353

List of Acronyms

ANC - Ante Natal Care

CHN- Community Health Nurse

CRR -Central River Region

HIV- Human Immuno-deficiency Virus

HMIS- Health Management Information System

IMNCI- Integrated Management of Newborn Childhood Illness

LRR- Lower River Region

NBER -North Bank East Region

NBWR- North Bank West Region

NGO- Non Governmental Organization

PHC- Primary Health Care

PMTCT- Prevention of Mother to Child Transmission

PNO – Principal Nursing Officer

RCH- Reproductive and Child Health

RDT- Rapid Diagnostics Test

SNO – Senior Nursing Officer

TBA- Traditional Births Attendant

URR- Upper River Region

VHS -Village Health Services

VHW -Village Health Worker

WHR 1 -Western Health Region 1

WHR 2 -Western Health Region 2

Forward

The Ministry of Health and Social welfare together with its partners and other health agencies is responsible for the provision of health care service delivery to the people of The Gambia. This involves the planning, implementation, monitoring and performance assessment of health programme and services. In order to fulfill this role there is the need for accurate and timely information on the health status and health service in The Gambia. The production of Health Service Statistic Reports, 2014 is a reference on performance of Health Sector as an information tool for policy makers, health service/programme managers, health partners, stakeholders, researchers and students.

This information collated is mainly summaries from public, Private, NGO and community health facilities. The ministry of Health and Social welfare acknowledges the significant roles of other agencies such as the UN system, development partners, research institutions and the Gambia bureau of Statistics in the provision of health related statistics to the general public. Some of such statistics have been quoted in this publication and duly acknowledged. The National Health Management Information System of the Ministry of Health is the focal unit responsible for collection, collation, analysis, reporting and presentation of health information services in the ministry.

Table of Contents

List of Acronyms	iii
Forward.....	iv
Table of Contents	v
List of Tables	vii
List of figures.....	ix
1.0 Introduction.....	1
2.0 Health Facility by type and ownership.....	1
3.0 Beds in Public Health Facilities	3
4.0 Human Resource.....	4
5.0 Completeness and Timeliness of Monthly and Quarterly Returns	9
6.0 Health Service Outputs	10
6.1 Clinic Attendance.....	10
6.2 Infant Welfare Clinic Attendance	11
6.3 Ante Natal Clinic Attendance	12
7.0 Reproductive Health Services.....	13
7.1 Ante natal care	13
7.2 Deliveries	13
8.0 Family Planning Services.....	15
9.0 HIV Counseling and Testing.....	19
10.0 Other Diseases/ Conditions of Special Focus Among Children < 5 Years (IMNCI).....	22
10.1 IMNCI Outpatient Cases.....	22
11.0 Maternal conditions.....	23
12.0 Outpatients Cases.....	23
12.1 Uncomplicated confirmed Malaria	24
12.2 Non Communicable Diseases cases by Region – 2014	29

13.0 Inpatient Admission	32
13.1 Admission due to Sexually Transmitted Infections	33
13.2 Admission due to IMNCI Cases	34
13.3 Admission due to maternal conditions.....	35
13.4 Admission due to Diseases and condition in ≥ 5 years of age	35
13.5 Admission due to Eye conditions.....	36
13.6 Admission due to NCDs	38
14.0 Deaths	40
14.1 Deaths due to IMNCI Cases.....	43
15.0 Immunization	45
16.0 Antigen coverage in 2014	46
17.0 Vitamin A. Prevention	47
18.0 Referral	48
19.0 Tuberculosis	49
20.0 Birth Registration.....	51
21.0 Laboratory Services	53
22.0 Village Health Services.....	57
23.0 Family Planning Services.....	59
24.0 Drug Consumption.....	63

List of Tables

Table 1: Number and type of health facility by region, 2014.....	2
Table 2: Number of beds in public health facilities by region- 2014.....	3
Table 3: Number of beds in public & private health facilities by category.....	3
Table 4: Distribution of Clinicians and Public Health Officers by region – 2014.....	4
Table 5: Distribution of Administrators and Financial Personnel by region – 2014.....	5
Table 6: Distribution of Ophthalmic and Optometry Personnel by region – 2014.....	5
Table 7: Distribution of Allied Health Professionals Personnel by region – 2014.....	6
Table 8: Distribution of Support Staff Personnel by region – 2014.....	7
Table 9: Proportion of health work force per 10, 000 Population.....	8
Table 10: Health Facility Monthly Returns – 2014.....	9
Table 11: Village Health Services Monthly Summary Form – 2014.....	9
Table 12: Number of Outpatient Attendance by Region – 2014.....	10
Table 13: Percentage of Outpatient Clinic Attendance by gender – 2014.....	10
Table 14: Number of Infant Welfare Clinic Attendance by Region – 2014.....	11
Table 15: Percentage of New Infant Welfare Clinic Attendance by sex by Region.....	11
Table 16: Number of Ante Natal Clinic Attendance by Region – 2014.....	12
Table 17: IPT 1 & 2 doses administered compared to total new registered antenatal by region – 2014.....	13
Table 18: Number of Deliveries conducted at Health Facilities by Region - 2011 to 2014.....	13
Table 19: Percentage of Live Births at the health facilities by Region from 2011-2014.....	14
Table 20: Deliveries conducted at the Village Health Services by Region – 2014.....	14
Table 21: Births at Health Facilities in 2014 by region.....	15
Table 22: Number of clients counseled for Family Planning Services by Region 2014.....	15
Table 23: Total New Family Planning Services Acceptors by age category.....	16
Table 24: New Family Planning Services Acceptors for Neogynon, Norigynon and Microgynon.....	16
Table 25: New Family Planning Services Acceptors for Jadelle and Condon – 2014.....	16
Table 26: New Family Planning Services Acceptors for Depo and Microlut – 2014.....	17
Table 27: New Family Planning Services Acceptors for Foam and IUCD – 2014.....	17
Table 28: Total Family Planning Services Current Users by age category.....	17
Table 29: Family Planning Services Revisit for Neogynon, Norigynon and Microgynon – 2014.....	18
Table 30: Family Planning Services Revisit for Jadelle and Condoms – 2014.....	18
Table 31: Family Planning Services Revisit for Microlut and Depo – 2014.....	18
Table 32: Family Planning Services Revisit for Foam and IUCD – 2014.....	19
Table 33: Number of HIV Counseling and Testing by region -2014.....	19
Table 34: Adults and Children with advanced HIV Infection currently receiving ART end 2014.....	20
Table 35: HIV prevention of mother-to-child transmission (PMTCT) by region -2014.....	20
Table 36: Key Performance Indicators for HIV programme in 2014.....	21
Table 37: Number of IMNCI Outpatient Cases by Region-2014.....	22
Table 38: Number of IMNCI Outpatient Cases by Region-2014.....	22
Table 39: Number of Uncomplicated confirmed Malaria by Region – 2014.....	24
Table 40: Total number of Uncomplicated confirmed Malaria by age group by Region – 2014.....	24
Table 41: Number of Long Lasting Insecticides Nets distributed by region- 2014.....	25
Table 42: Number of Sexually Transmitted Infection- 2014.....	25
Table 43: Number of Diseases reported on >5 years by Region-2014.....	26
Table 44: Number of Diseases Reported on >5 years by Region 2014.....	26

Table 45: Number of Eye Conditions by Region 2014.....	27
Table 46: Number of Eye Conditions by Region 2014.....	27
Table 47: Number of Mental Disorder by region-2014.....	28
Table 48: Number of Mental Disorder by region-2014.....	28
Table 49: Non Communicable Diseases cases by Region – 2014.....	29
Table 50: Major Conditions by Region -2014.....	29
Table 51: Number of Accidents Cases by Region-2014.....	30
Table 52: Number of Accidents Cases by Region-2014.....	30
Table 53: Number of Accidents Cases by Region-2014.....	30
Table 54: Number of Oral Disorder Cases by Region-2014.....	31
Table 55: Number of Maternal conditions by Region-2014.....	31
Table 56: Number of Inpatient Admission by Region – 2014.....	32
Table 57: Admission due to Severe confirmed Malaria by age and gender- 2014.....	32
Table 58: Total Admission due to Severe confirmed Malaria by age group – 2014.....	33
Table 59: Number of Admission due to Sexually Transmitted Infections by Region – 2014.....	33
Table 60: Number of Admission due to IMNCI Cases by Region -2014.....	34
Table 61: Number of IMNCI Inpatient Cases by Region-2014.....	34
Table 62: Number of IMNCI Inpatient Cases by Region-2014.....	35
Table 63: Number of Admission due to Maternal Conditions by Region-2014.....	35
Table 64: Number of Admission due to Diseases Reported on ≥ 5 years by Region-2014.....	35
Table 65: Number of Admission due to Diseases Reported on ≥ 5 years by Region-2014.....	36
Table 66: Number of Admission due to Eye Conditions by Region-2014.....	36
Table 67: Number of Admission due to Eye Conditions by Region-2014.....	36
Table 68: Number of Admissions due to mental health by region in 2014.....	37
Table 69: Number of Admissions due to mental health by region in 2014.....	37
Table 70: Number of Admission due to Non Communicable Diseases cases by Region-2014.....	38
Table 71: Number of Admission due to Non Communicable Diseases cases by Region-2014.....	38
Table 72: Number of Admission due to Accident cases by Region-2014.....	39
Table 73: Number of Admission due to Accident cases by Region-2014.....	39
Table 74: Number of Admission due to Accident Cases by Region-2014.....	39
Table 75: Number of Admission due to Accident Cases by Region-2014.....	40
Table 76: Number of Deaths due to Non Communicable Diseases Cases by Region-2014.....	40
Table 77: Number of Deaths due to Non Communicable Diseases Cases by Region-2014.....	40
Table 78: Number of Deaths due to Accident cases by Region – 2014.....	41
Table 79: Number of Deaths due to Accident cases by Region – 2014.....	41
Table 80: Number of Deaths due to Accident cases by Region – 2014.....	41
Table 81: Number of Deaths due to Accident cases by Region – 2014.....	42
Table 82: Number of Deaths due to maternal conditions by Region – 2014.....	42
Table 83: Number of Deaths due to Sexually Transmitted Diseases by Region – 2014.....	42
Table 84: Number of Deaths due to IMNCI Cases by Region – 2014.....	43
Table 85: Deaths reported by the Health facilities in 2014.....	43
Table 86: Deaths at the Health facility by age group Region 2014.....	44
Table 87: Number of Doses of Vaccines administered by region in 2014.....	45
Table 88: Number of Doses of Vaccines administered by region in 2014.....	45
Table 89: Number of Doses of Vaccines administered by region in 2014.....	45
Table 90: Number of Doses of Vaccines administered by region in 2014.....	46
Table 91: Percentage of BGC, Hepatitis B and Penta coverage in 2014.....	46
Table 92: Percentage of Polio, Measles and Yellow Fever coverage in 2014.....	47

Table 93: Percentage of PCV, Rota and TT coverage in 2014.....	47
Table 94: Number of doses of Vitamin A. administered by region – 2014.....	47
Table 95: Total number of referrals out from Health facilities by gender in 2014.....	48
Table 96: Percentage of referrals out by gender – 2014.....	48
Table 97: Total case-notification all forms of tuberculosis by region-2014.....	49
Table 98: Number of Birth Registration by Region- (Gambian Parents) – 2014.....	51
Table 99: Number of Birth Registration by Region (Non Gambian Parents) -2014.....	51
Table 100: Number of Birth Registration by Region- (Births Outside Gambia) – 2014.....	52
Table 101: Number of Laboratory Test conducted in Central River region – 2014.....	53
Table 102: Number of Laboratory Test conducted in Lower River region – 2014.....	53
Table 103: Number of Laboratory Test conducted in North Bank East Region – 2014.....	54
Table 104: Number of Laboratory Test conducted in North Bank West Region – 2014.....	54
Table 105: Number of Laboratory Test conducted in Upper River region – 2014.....	55
Table 106: Number of Laboratory Test conducted in Western Health Region 1 – 2014.....	55
Table 107: Number of Laboratory Test conducted in Western Health Region 2 – 2014.....	56
Table 108: Total number of patients seen by the Village Health Workers per region in – 2014.....	57
Table 109: Number of Suspected measles reported by the Village Health Workers by region – 2014...57	57
Table 110: Number of Fast breathing reported by the Village Health Workers by region – 2014.....58	58
Table 111: Number of Diarrhoea cases reported by the Village Health Workers by Region – 2014.....58	58
Table 112: Number of Uncomplicated malaria confirmed with RDT reported by the Village Health Worker – 2014.....58	58
Table 113: Condom consumption at the VHS.....59	59
Table 114: Number of Referrals by VHWs to the health facilities.....59	59
Table 115: Number of Home Visits by VHWs and antenatal visits by TBAs.....59	59
Table 116: Postpartum care and neonatal conditions reported by the TBAs.....60	60
Table 117: Family planning services conducted by the TBAs.....60	60
Table 118: Number of Referrals by the TBAs to health facilities.....60	60
Table 119: Number of Supervisory visits and Clinical activities conducted by the CHN.....61	61
Table 120: Number of at risk children visited by the CHN.....61	61
Table 121: Number of TB patients receiving DOTS in the Village Health Services.....61	61
Table 122: Number of Deaths reported by the Village Health Services in 2014.....62	62
Table 123: Consumption of Essential Medicines by the public Health Facilities in 2014.....63	63
Table 124: Consumption of ARV Medicines by public health facilities in 2014.....64	64

List of figures

Figure 1: Percentage of New Registered Ante Natal Mothers by Age category by Region.....	12
Figure 2: Percentage of Skilled Deliveries and institutional deliveries from 2011- 2014.....	14
Figure 3: Number of Maternal conditions by Region in 2014.....	23
Figure 4: Outpatient Attendance from 2011 - 2014.....	23
Figure 5: Incidence of malaria deaths per 10, 000 Population.....	25
Figure 6: Chart showing the trend of TB case notification from 2006 - 2014.....	49
Figure 7: TB Treatment success rate 2005 - 2013.....	50

1.0 Introduction

The Ministry of Health & Social Welfare developed the Gambia Annual Health Service Statistics report 2014 in order to provide an overview of key statistics in the health sector for 2014. The report is produced annually thereby enabling an analysis of trends over time.

This report is divided into chapters, namely infrastructure, Human resources, Morbidity, immunization, village health service and special programs. The Special program includes national data on family planning (FP), tuberculosis (TB), HIV & AIDS, malaria and Reproductive and child Health (RCH).

The report aims to show key statistics in the health sector in a concise, easily accessible manner to ensure that this valuable data is readily available to all stakeholders. Comparisons with data from 2011 will help users to understand the evolving health situation in the Gambia.

This document includes data from the village health services, public, private and NGO health facilities, Community clinics and referral hospitals. Morbidity and mortality data from EFSTH is not included in the report.

Quarterly the HMIS unit goes on monitoring and supervisory visits to all the health facilities and regional health teams to verify and audit the data generated at the facility levels. During the monitoring visits, opportunities are taken to discuss with the health workers and the RHT on issues affecting data quality. Following the aggregation of the data the HIS technical team will review it prior to the publication of the data in the HMIS quarterly bulletin for information sharing and dissemination with our development partners and all stakeholders.

2.0 Health Facility by type and ownership

The number of health services delivery points reported by Regional Health Management Teams (RHTs) in the Gambia at the end of 2014 was 1456 (see table 1). There was significant increase in the number of minor health centers; this increase was primarily due to the upgrading of some of the village Out Patient Department (OPD) clinics to minor health centers. The overall increase in the number of services delivery points was primarily due to expansion of primary health care services and opening of new outreach Reproductive and Child Health (RCH) clinics. However, the number of private health facilities seems low and there has been proliferation of private health facilities in the country during the past years mainly concentrating in urban areas.

Table 1: Number and type of health facility by region, 2014

Health Facility Type	WHR1	WHR2	NBWR	NBER	LRR	CRR	URR	Total
Hospitals	5	1	0	1	0	1	0	8
Major Health Centers	1	2	1	0	1	1	1	7
Minor Health Centers	6	5	4	6	5	7	10	43
NGO Facilities & Clinics	4	14	2	1	2	3	4	30
Private Health Facilities	15	3	0	0	1	0	6	25
Community Managed Facilities	7	9	6	5	4	10	1	42
Specialized RCH Clinics	2	0	0	1	0	1	0	4
RCH Outreach Clinics	20	20	32	31	34	71	61	269
RCH Base clinics sites	153	31	6	7	5	27	7	236
PHC Key Villages	3	12	13	9	8	26	12	83
PHC Villages	24	111	100	95	92	197	77	696
Service Clinics	7	2	0	1	1	1	1	13
Service Delivery Points	247	210	164	157	153	345	180	1456

Source: HMIS, 2014

3.0 Beds in Public Health Facilities

The tables below show the number of beds in the labour, antenatal / postnatal and in-patient wards by region in 2014. During 2014, there was a total of 1917 beds in the public health facilities (hospitals, major and minor health centers) in the country.

Table 2: Number of beds in public health facilities by region- 2014

Regions	Number of Beds by Region				% of Beds
	Labour	Antenatal / Post natal	Inpatient	Total	
WHR1	50	93	472	615	32.08
WHR2	50	73	163	286	14.92
NBWR	11	31	59	101	5.27
NBER	16	21	132	169	8.82
LRR	23	16	82	121	6.31
CRR	26	51	214	291	15.18
URR	19	50	265	334	17.42
National	195	335	1387	1917	100.00

Source: HMIS, 2014

Table 3: Number of beds in public & private health facilities by category

Health Facility Type	Labour	Antenatal / Postnatal	Inpatients	Total	% of Beds
Hospitals	38	110	707	855	37.52
Major Health Centers	32	61	225	318	13.95
Minor Health Centers	122	164	534	820	35.98
Private Health Facilities	26	49	211	286	12.55
Total	218	384	1677	2279	100.00

Source: HMIS, 2014

4.0 Human Resource

In 2014 there were 188 Medical Doctors and 998 nurses/midwives in the ministry of health and social welfare.

Table 4: Distribution of Clinicians and Public Health Officers by region - 2014

	WHR1		WHR2		NBWR		NBER		LRR		CRR		URR		TOTAL	
	M	F	M	F	M	F	M	F	M	F	M	F	M	F	M	F
Medical Officer	99	49	11	7	1	0	3	0	1	0	11	5	1	0	127	61
Consultant	4	1	0	0	0	0	0	0	0	0	0	0	0	0	4	1
RN/M	4	6	0	5	2	0	1	1	0	0	1	1	0	0	8	13
SEN/M	17	38	9	19	3	4	3	6	4	3	6	1	4	6	46	77
CHN/M	8	35	3	15	6	6	8	4	9	8	11	3	9	8	54	79
RN	63	93	11	14	4	3	10	8	6	5	14	18	7	4	115	145
SEN	43	75	6	17	7	5	11	8	9	3	40	24	2	4	118	136
CHN	3	13	7	10	5	9	9	12	15	10	12	8	12	9	63	71
CHN/VHS	1	0	12	0	10	4	10	4	8	0	13	0	11	1	65	9
PHO	22	18	8	4	14	3	13	2	18	1	17	1	17	2	109	31
Perioperative Nurse	2	2	6	2	2	0	0	0	0	0	0	0	1	0	11	4
Vector Control Officer	1	0	1	0	1	0	1	0	0	0	1	0	0	0	5	0
Psychiatric Nurse/ Officer	0	1	0	0	0	0	0	0	0	0	0	0	0	0	0	1
Clinic Nurse	1	3	3	3	0	0	0	0	0	0	7	3	0	0	11	9
Nurse Anaesthetic	4	8	1	1	0	0	0	0	0	0	0	0	0	0	5	9
Leprosy / TB Inspector	4	2	2	1	0	0	1	0	4	1	5	0	5	0	21	4

Source: HRH, 2014

Table 5: Distribution of Administrators and Financial Personnel by region - 2014

	WHR1		WHR2		NBWR		NBER		LRR		CRR		URR		TOTAL	
	M	F	M	F	M	F	M	F	M	F	M	F	M	F	M	F
Administrative staff	41	13	5	1	0	0	6	1	1	0	2	1	1	0	56	16
PNO	2	0	1	2	1	0	2	0	0	0	2	0	1	0	9	2
SNO/NO	38	32	4	5	0	0	1	1	2	0	6	1	1	0	52	39
Matron	0	0	0	0	0	0	1	0	0	0	0	0	0	0	1	0
Accountant	4	6	3	1	1	0	4	0	1	0	3	1	1	0	17	8
Accounts Clerk / Cashier	25	33	8	2	1	1	4	10	3	0	9	3	5	0	55	49
IT Officer /IT Tech	1	0	0	0	1	0	1	0	1	0	1	0	1	0	6	0
Blood Donor Recruitment Officer	6	10	2	0	0	0	0	0	0	0	1	1	0	0	9	11
Store Officer / Manager	2	0	1	0	0	0	1	0	0	0	1	0	0	0	5	0

Source: HRH, 2014

Table 6: Distribution of Ophthalmic and Optometry Personnel by region - 2014

	WHR1		WHR2		NBWR		NBER		LRR		CRR		URR		TOTAL	
	M	F	M	F	M	F	M	F	M	F	M	F	M	F	M	F
Medical Ophthalmologist	1	0	0	0	0	0	0	0	0	0	0	0	0	0	1	0
Ophthalmic Medical Assistant	3	4	3	0	1	0	1	0	1	0	0	0	2	0	11	4
Cat. Surgeon	1	0	0	0	0	0	0	0	0	0	0	0	0	0	1	0
Ophthalmic Nurse	4	4	2	4	0	0	1	0	0	1	3	1	2	0	12	10
Community Ophthalmic nurse	1	0	0	0	0	0	0	0	1	0	0	0	0	0	2	0
Instrument Tech	1	0	0	0	0	0	0	0	0	0	0	0	0	0	1	0
Ophthalmic Optician	0	0	0	0	0	0	0	0	0	0	1	0	0	0	1	0
Optometry Tech.	0	1	0	0	0	0	1	0	0	0	0	0	0	0	1	1
Optical Asst.	2	0	0	0	0	0	0	0	0	0	0	0	0	0	2	0
Optical Att.	1	1	0	0	0	0	0	0	0	0	0	0	0	0	1	1
Optometrist	1	1	0	0	0	0	0	0	0	0	0	0	0	0	1	1
LPED-Tech.	1	0	0	0	0	0	0	0	0	0	0	0	0	0	1	0
Refractionist	0	6	0	0	0	0	0	0	0	0	0	0	0	0	0	6

Source: HRH, 2014

Table 7: Distribution of Allied Health Professionals Personnel by region - 2014

	WHR1		WHR2		NBWR		NBER		LRR		CRR		URR		TOTAL	
	M	F	M	F	M	F	M	F	M	F	M	F	M	F	M	F
Biomedical Tech	3	1	0	0	0	0	0	0	0	0	0	0	0	0	3	1
Pharmacist	2	1	0	1	0	0	0	0	1	0	0	0	0	0	3	2
Pharmacy Tech	2	2	1	1	0	0	1	0	0	0	4	1	0	0	8	4
Pharmacy Asst/ Dispensing Asst.	26	23	5	6	2	1	6	7	1	1	4	5	0	0	44	43
Lab Technologist	1	2	1	0	0	0	0	0	0	0	0	0	0	0	2	2
Lab Scientist	5	3	0	0	0	0	0	0	0	0	0	1	2	0	7	4
Lab Technician	14	10	3	1	1	1	2	2	1	0	3	0	0	0	24	14
Lab Assistant	25	20	4	5	2	0	9	6	5	0	5	1	9	0	59	32
Lab Attendant	3	1	2	0	0	0	0	0	0	0	1	1	0	0	6	2
Radiographer	2	0	0	1	0	0	0	0	0	0	2	0	0	0	4	1
Radiology Tech/ X-Ray Tech	1	1	0	0	0	0	1	0	0	0	0	0	0	0	2	1
Radiology Asst / X-Ray Asst	5	3	3	0	0	0	4	0	0	0	1	0	2	0	15	3
Radiology Att / X-Ray Att	4	1	0	0	0	0	0	0	0	0	0	1	0	0	4	2
Physiotherapist	2	2	0	1	0	0	0	0	0	0	0	0	0	0	2	3
Physio tech	2	1	1	0	0	0	0	0	0	0	0	0	0	0	3	1
Physio Asst	5	3	1	1	0	0	1	0	0	0	0	0	0	0	7	4
Dental Surgeon Asst	3	4	1	1	0	0	0	2	1	0	1	2	1	0	7	9
Dental Technician	2	0	1	0	0	0	0	0	0	0	0	0	0	0	3	0
Dental Officer	0	1	0	0	0	0	0	0	0	0	0	0	0	0	0	1
CSSD Supervisor.	1	0	0	0	0	0	0	0	0	0	0	0	0	0	1	0
CSSD Technician	2	1	0	0	0	0	0	0	0	0	0	0	0	0	2	1
CSSD Assistant	0	0	0	0	0	0	2	2	0	0	0	0	0	0	2	2
CSSD Attendant	7	10	0	0	0	0	0	0	0	0	0	0	0	0	7	10
Occupational Therapist	1	1	0	0	0	0	0	0	0	0	0	0	0	0	1	1
Infection Control	2	1	0	0	0	0	1	0	0	0	0	0	0	0	3	1
Sterilization Asst.	0	0	1	2	0	0	0	0	0	0	0	0	0	0	1	2

Source: HRH, 2014

Table 8: Distribution of Support Staff Personnel by region - 2014

	WHR1		WHR2		NBWR		NBER		LRR		CRR		URR		TOTAL	
	M	F	M	F	M	F	M	F	M	F	M	F	M	F	M	F
Data Entry Clerk	3	32	7	9	3	4	4	5	6	1	6	1	9	3	38	55
Records Officer	3	7	2	1	0	0	0	0	0	0	1	0	0	0	6	8
Records Clerk	11	31	1	0	0	0	6	6	0	0	4	6	0	0	22	43
C.N.A	104	250	12	54	7	23	24	81	13	12	47	53	9	15	216	488
Orderly/Cleaner	177	169	29	41	14	20	53	51	22	27	70	48	37	28	402	384
Health Labourer	22	1	12	0	12	0	12	0	11	0	17	0	20	0	106	1
Cook	4	41	0	7	0	5	0	19	1	4	2	16	0	9	7	101
Domestic Supervisor	2	1	1	0	0	0	1	2	0	0	0	0	0	0	4	3
Laundress	2	39	0	9	0	7	0	17	0	5	2	13	2	20	6	110
Tailor	8	0	0	0	0	0	4	0	0	0	2	0	0	0	14	0
Driver	34	0	11		10	0	18	0	15	0	7	0	15	0	110	0
Security	120	2	19	3	10	0	31	1	10	0	26	6	20	0	236	12
Secretary	1	12	0	1	0	0	0	2	0	0	0	3	0	1	1	19
Typist	0	13	0	3	0	2	0	3	0	1	0	4	0	0	0	26
Receptionist/Tele. Operator	5	15	1	2	0	0	1	0	0	0	0	2	0	0	7	19
Messenger	7	0	2	0	0	0	1	0	1	0	2	0	2	0	15	0
Mortuary Att.	4	0	0	0	0	0	2	1	0	0	0	0	0	0	6	1
Vector Control Att.	7	2	4	0	2	0	3	0	2	0	1	0	2	0	21	2
Store Keeper/ Hand	11	9	2	0	0	0	3	0	1	0	1	0	2	0	20	9
Tradesman	65	2	18	0	4	0	20	0	4	0	39	0	5	0	155	2

Source: HRH, 2014

Table 9: Proportion of health work force per 10, 000 Population.

Health workers	Total	Proportion H/W per 10,000 population
Medical Officer	188	0.95
State Certified Midwives	21	0.11
State Registered Nurse	260	1.32
State Enrolled Midwives	123	0.62
Community Health Midwives	133	0.67
Community Health Nurse	208	1.05
Public Health Officer	140	0.71
Lab Technologist	4	0.02
Lab Technicians	38	0.19
Lab Assistant	91	0.46
Pharmacist	5	0.02
Pharmacy Technician	12	0.06
Pharmacy Assistant	87	0.44
Dental Technician	3	0.02
Dental surgeon Assistant	16	0.08
Radiology Technician	3	0.02
Radiology Assistant	18	0.09
Physiotherapy Assistant	5	0.06
Nurse Anaesthetist/Theatre Nurse	25	0.13
Lab Scientist	14	0.07
Village Health Workers	116	0.59
Traditional Birth Attendants	848	4.29
Total Midwives	277	1.4
Total Nurses	723	3.65

Source: HRH, 2014

5.0 Completeness and Timeliness of Monthly and Quarterly Returns

Completeness and timeliness of returns from all the health facilities and Primary Health Care (PHC) villages is monitored by the National HMIS database. This is an in built system in the database, any time the data entry clerks at the RHTs complete punching a return for a particular reporting facility the system marks it as complete. However, the database also indicates if that particular return was punched on time, which is by 10th of the following month to indicate the timeliness of the report. The total number of expected monthly health facilities returns including village health services return in 2014 was 9,837. Out of this, 1812 were health facility monthly returns and 8025 were village health services monthly summary form. In 2014, 1595 monthly health returns and 6236 village Health service monthly summary forms were punched into the DHIS 2 database. However, while completeness of returns from the facilities is improving, timeliness remains a major challenge.

Table 10: Health Facility Monthly Returns - 2014

Regions	Actual Reports	Expected Reports	Percent	Reports On Time	Percent On Time
CRR	279	300	93	190	63.3
LRR	217	228	95.2	132	57.9
NBER	163	168	97	123	73.2
NBWR	141	156	90.4	110	70.5
URR	190	216	88	119	55.1
WHR1	313	348	89.9	262	75.3
WHR2	292	396	73.7	149	37.6
National	1595	1812	88	1085	59.9

Source: HMIS, 2014

Table 11: Village Health Services Monthly Summary Form - 2014

Regions	Actual Reports	Expected Reports	Percent	Reports On Time	Percent On Time
CRR	1019	1668	61.1	845	50.7
LRR	818	840	97.4	571	68
NBER	1080	1512	71.4	965	63.8
NBWR	906	1452	62.4	643	44.3
URR	1142	1176	97.1	788	67
WHR1	270	276	97.8	249	90.2
WHR2	1001	1104	90.7	375	34
National	6236	8028	77.7	4436	55.3

Source: HMIS, 2014

6.0 Health Service Outputs

6.1 Clinic Attendance

In 2014, the health facilities in the Gambia registered 1, 433, 847 OPD attendances. Out of which 44.03% were male and 55.97% female. Of the total attendances 30.88% were registered in the western health region 1, WHR2, 19.64% CRR 15.06% and URR 14.61 % respectively. In terms of age variation, out of the total OPD attendance 49.87.3% were over 14 years of age, 30.96% were less than 5 years and 19.17% were 5 to 14years of age.

Table 12: Number of Outpatient Attendance by Region – 2014

Regions	Under 5 years of age		5 to 14 years of age		Over 14 years of age		Total Out Patient Attendance	
	Male	Female	Male	Female	Male	Female	Male	Female
CRR	40987	39391	16681	18081	35084	65649	92752	123121
LRR	17020	16030	7990	7654	15876	33774	40886	57458
NBER	18228	16659	10354	5858	18401	31285	46983	53802
NBWR	13197	13291	7903	8172	14641	27624	35741	49087
URR	33676	32650	20961	22719	35228	64315	89865	119684
WHR 1	62997	62087	39696	43022	96581	138446	199274	243555
WHR 2	39116	38623	30408	35375	56300	81817	125824	155815
National	225221	218731	133993	140881	272111	442910	631325	802522

Source: HMIS, 2014

Table 13: Percentage of Outpatient Clinic Attendance by gender - 2014

Regions	Under 5 years of age		5 to 14 years of age		Over 14 years of age		Total Out Patient Attendance	
	Male	Female	Male	Female	Male	Female	Male	Female
CRR	51%	49%	48%	52%	35%	65%	43%	57%
LRR	51%	49%	51%	49%	32%	68%	42%	58%
NBER	52%	48%	64%	36%	37%	63%	47%	53%
NBWR	50%	50%	49%	51%	35%	65%	42%	58%
URR	51%	49%	48%	52%	35%	65%	43%	57%
WHR 1	50%	50%	48%	52%	41%	59%	45%	55%
WHR 2	50%	50%	46%	54%	41%	59%	45%	55%
National	51%	49%	49%	51%	38%	62%	44%	56%

Source: HMIS, 2014

6.2 Infant Welfare Clinic Attendance

Table 14: Number of Infant Welfare Clinic Attendance by Region – 2014

Regions	New attendance < 1 year of age		All other attendance		Total infant welfare clinic attendance	
	Male	Female	Male	Female	Male	Female
CRR	5731	5528	66861	66570	72592	72098
LRR	1988	3808	30459	31325	32447	35133
NBER	2376	2289	44549	43082	46925	45371
NBWR	2227	2149	40981	40184	43208	42333
URR	5255	6689	74611	76028	79866	82717
WHR 1	12706	12280	158933	168834	171639	181114
WHR2	6852	10544	95636	93044	102488	103588
National	37135	43287	512030	519067	549165	562354

Source: HMIS, 2014

Table 15: Percentage of New Infant Welfare Clinic Attendance by sex by Region

Regions	New attendance < 1 year of age	
	Male	Female
CRR	51%	49%
LRR	34%	66%
NBER	51%	49%
NBWR	51%	49%
URR	44%	56%
WHR1	51%	49%
WHR2	39%	61%
National	46%	54%

Source: HMIS, 2014

The tables above shows infant welfare clinic attendance by region, new attendance less than one year of age, all other attendance and percentage of new infant welfare clinic attendance by sex and region in 2014. Out of the total new attendance less than one year of age 46% were male and 54% were female. However, there was no significant variation between male and female in all the regions except in LRR and WHR2 where the female attendance is almost twice of the male attendance.

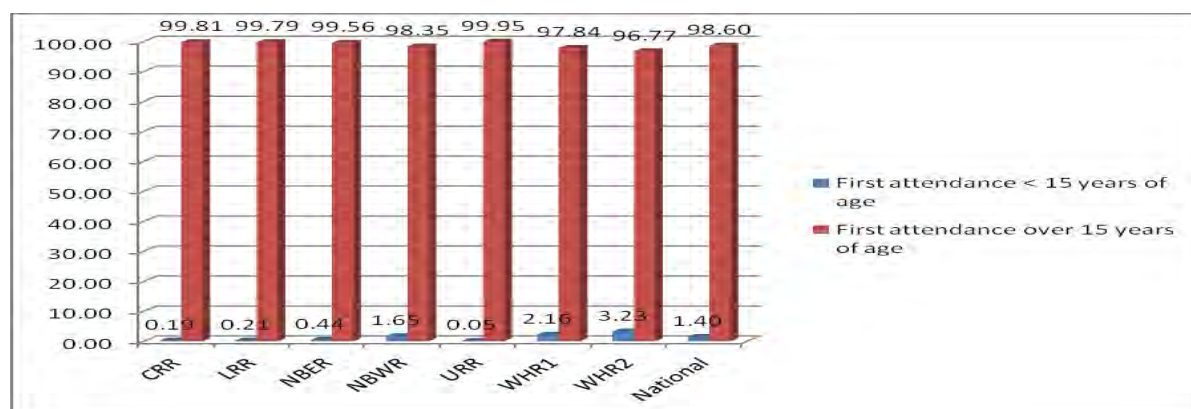
6.3 Ante Natal Clinic Attendance

Table 16: Number of Ante Natal Clinic Attendance by Region – 2014

Regions	First attendance < 15 years of age	First attendance over 15 years of age	All other attendances	Total clinic attendance
CRR	22	11490	28138	39650
LRR	8	3742	7809	11559
NBER	23	5228	11776	17027
NBWR	83	4962	9565	14610
URR	6	12783	30126	42915
WHR1	568	25709	70000	96277
WHR2	342	10246	20914	31502
National	1052	74160	178328	253540

Source: HMIS, 2014

Figure 1: Percentage of New Registered Ante Natal Mothers by Age category by Region



Source: HMIS, 2014

Nationally 75,212 new antenatal were registered in 2014, out of the total new antenatal registered 74, 160 (98.6%) were above 15 years of age and 1, 050 (1.4%) were less than 15 years of age. WHR2 registered the highest rate of new antenatals registered below 15 years of age 3.23% followed by WHR1 and NBWR with 2.16% and 1.65% respectively.

7.0 Reproductive Health Services

7.1 Ante natal care

Table 17: Number of IPT 1 & 2 doses administered compared to total new registered antenatal by region – 2014

Regions	IPT1	IPT2	New Antenatal Registration
CRR	11585	8609	11512
LRR	3460	2941	3750
NBER	5082	4044	5251
NBWR	4608	3612	5045
URR	11014	8092	12789
WHR1	20396	12233	26277
WHR2	9720	6653	10588
National	65865	46184	75212

Source: HMIS, 2014

7.2 Deliveries

Table 18: Number of Deliveries conducted at Health Facilities by Region - 2011 to 2014

Regions	2011		2012		2013		2014	
	M	F	M	F	M	F	M	F
CRR	1610	1474	2682	2587	2995	3355	3286	2987
LRR	682	670	758	802	926	801	1011	988
NBER	1425	1360	1713	1620	1583	1432	1497	1368
NBWR	1323	1209	1357	1339	1512	1393	1604	1478
URR	2354	2306	2437	2420	2442	2460	2903	2662
WHR1	20490	18019	14406	14359	10567	10673	14920	9952
WHR2	*	*	*	*	4071	4088	3964	3909

Source: HMIS, 2014 * WHR1 and WHR2 was one Health Region before 2013

Table 19: Percentage of Live Births at the health facilities by Region from 2011-2014

Regions	2011		2012		2013		2014	
	M	F	M	F	M	F	M	F
CRR	98.07	97.96	95.26	98.18	97.56	88.79	94.55	94.74
LRR	96.63	97.01	97.23	97.76	93.74	98.75	91.10	94.53
NBER	94.39	92.87	97.14	96.11	96.21	95.95	94.79	95.53
NBWR	97.73	97.60	94.33	92.08	93.39	90.52	94.51	96.68
URR	94.27	94.19	95.53	87.27	92.18	91.95	93.01	93.54
WHR1	96.91	96.64	96.77	96.58	95.86	94.31	98.07	97.64
WHR2	*	*	*	*	96.32	94.89	98.61	97.62

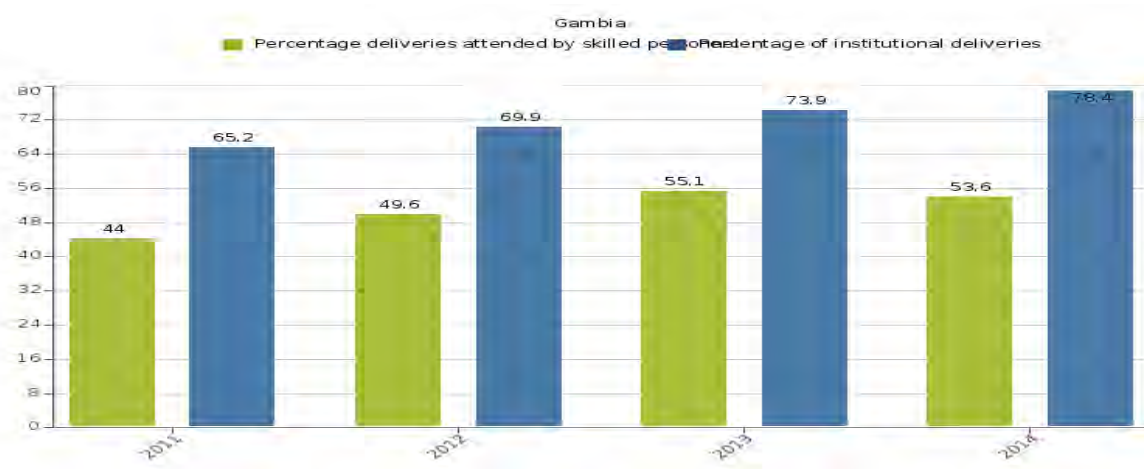
Source: HMIS, 2014 *WHR1 and WHR2 was one Health region before 2013

Table 20: Deliveries conducted at the village health services by region in 2014

Regions	Total Deliveries		Live Births		Still Births		% of Live Births	
	M	F	M	F	M	F	M	F
CRR	1446	1333	1417	1313	29	20	97.99	98.50
LRR	430	456	423	449	7	7	98.37	98.46
NBER	570	560	565	549	5	11	99.12	98.04
NBWR	560	599	539	573	21	26	96.25	95.66
URR	2764	2587	2730	2565	34	22	98.77	99.15
WHR1	409	420	408	420	1	0	99.76	100.00
WHR2	1085	1261	1076	1255	9	6	99.17	99.52
National	7264	7216	7158	7124	106	92	98.54	98.73

Source: HMIS, 2014

Figure 2: Percentage of deliveries attended by Midwives and institutional deliveries from 2011-2014



Source: HMIS, 2014

The graph above shows deliveries attended by Midwives against institutional deliveries from 2011 to 2014. In each of the years there is more institutional deliveries than deliveries attended by Midwives. The highest institutional delivery was reported in 2014 of 78.4% while 2013 had the highest deliveries attended by Midwives of 55.1%.

Table 21: Births at Health Facilities in 2014 by region

Regions	Live Births<2.5kg		Live Births>2.5kg		Fresh Stillbirths<2.5 kg		Macerated 2.5kg		Deliveries attended by Midwives		Total Deliveries		% of Live Birth	
	F	M	F	M	F	M	F	M	F	M	F	M	M	F
CRR	402	344	2428	2763	74	84	79	88	1735	1683	2987	3286	94.55	94.74
LRR	76	70	858	851	14	15	14	22	828	835	988	1011	91.10	94.53
NBER	149	133	1347	1286	33	36	37	27	665	779	1566	1497	94.79	95.53
NBWR	130	102	1299	1414	7	10	16	26	1127	1200	1478	1604	94.51	96.68
URR	405	474	2085	2226	60	50	54	52	1990	2053	2662	2903	93.01	93.54
WHR1	1075	896	8396	8503	84	84	145	165	9107	7711	9700	9584	98.07	97.64
WHR2	519	418	3297	3491	51	38	60	53	3071	3123	3909	3964	98.61	97.62

Source: HMIS, 2014

8.0 Family Planning Services

Table 22: Number of clients counseled for Family Planning Services by Region 2014

Regions	Total women seen			Total men seen			counseled only	
	< 15 Years	15-24 Years	> 24 Years	< 15 Years	15-24 Years	> 24 Years	< 15 Years	> 24 Years
CRR	27	3392	6444	30	1004	2746	66	2014
LRR	23	1530	2659	13	483	644	17	402
NBER	11	1189	2571	37	290	337	5	947
NBWR	11	1313	3315	5	182	1170	20	3894
URR	6	967	1916	0	798	909	6	375
WHR 1	143	8620	16863	0	1148	2593	13	4945
WHR 2	3	6786	6212	0	6914	7455	3	476
National	224	23797	39980	85	10819	15854	130	13053

Source: HMIS, 2014

Table 23: Total New Family Planning Services Acceptors by age category

Regions	Total New acceptors		
	<15Yrs	15-24 Yrs	>24yrs
CRR	17	2400	3811
LRR	26	788	1136
NBER	23	1035	1737
MBWR	3	709	1296
URR	0	841	1719
WHR1	44	4790	12438
WHR2	155	8337	8902
National	268	18900	31039

Source: HMIS, 2014

Table 24: New Family Planning Services Acceptors for Neogynon , Norigynon and Microgynon

Regions	Neogynon			Norigynon			Microgynon		
	<15Yrs	15-24 Yrs	>24yrs	<15Yrs	15-24 Yrs	>24yrs	<15Yrs	15-24 Yrs	>24yrs
CRR	0	0	0	0	1	1	4	532	741
LRR	0	0	0	0	0	0	6	88	109
NBER	0	15	26	0	14	23	6	123	236
NBWR	0	142	239	0	1	1	0	234	324
URR	0	0	0	0	0	0	0	227	578
WHR1	0	99	162	0	99	162	8	1063	1889
WHR2	140	52	133	0	0	0	1	1251	1372
National	140	308	560	0	115	187	25	3518	5249

Source: HMIS, 2014

Table 25: New Family Planning Services Acceptors for Jadelle and Condon – 2014

Regions	Jadelle			Male Condon			Female condom		
	<15Yrs	15-24 Yrs	>24yrs	<15Yrs	15-24 Yrs	>24yrs	<15Yrs	15-24 Yrs	>24yrs
CRR	0	29	94	10	780	1046	0	0	0
LRR	0	48	61	14	284	362	0	0	0
NBER	0	100	430	15	434	492	0	1	1
NBWR	0	0	1	1	145	212	0	0	0
URR	0	0	0	0	222	463	0	0	4
WHR1	1	283	926	2	2631	7391	0	16	30
WHR2	0	0	0	9	5819	6034	0	0	0
National	1	460	1512	51	10315	16000	0	17	35

Source: HMIS, 2014

Table 26: New Family Planning Services Acceptors for Depo and Microlut – 2014

Regions	Depo			Microlut		
	<15Yrs	15-24 Yrs	>24yrs	<15Yrs	15-24 Yrs	>24yrs
CRR	3	1070	1539	0	0	22
LRR	6	361	576	0	0	4
NBER	2	297	584	0	14	33
NBWR	1	463	809	0	13	228
URR	0	407	1096	0	0	0
WHR1	31	2067	4052	0	210	323
WHR2	5	1197	1603	0	61	49
National	48	5862	10259	0	298	659

Source: HMIS, 2014

Table 27: New Family Planning Services Acceptors for Foam and IUCD – 2014

Regions	Foam			IUCD		
	<15Yrs	15-24 Yrs	>24yrs	<15Yrs	15-24 Yrs	>24yrs
CRR	0	10	30	0	4	39
LRR	0	6	12	0	6	5
NBER	0	3	2	0	3	1
NBWR	0	0	0	1	0	1
URR	0	0	0	0	0	0
WHR1	0	155	285	2	35	190
WHR2	0	0	0	0	30	10
National	0	174	329	3	78	246

Source: HMIS, 2014

Table 28: Total Family Planning Services Current Users by age category

Regions	Total current users		
	<15Yrs	15-24 Yrs	>24yrs
CRR	0	3925	7511
LRR	62	2092	3416
NBER	17	1384	3046
NBWR	4	1302	3211
URR	1	1236	2317
WHR1	67	7773	16961
WHR2	0	11326	13213
National	151	29038	49675

Source: HMIS, 2014

Table 29: Family Planning Services Revisit for Neogynon, Norigynon and Microgynon – 2014

Regions	Neogynon			Norigynon			Microgynon		
	<15Yrs	15-24 Yrs	>24yrs	<15Yrs	15-24 Yrs	>24yrs	<15Yrs	15-24 Yrs	>24yrs
CRR	0	0	0	0	176	286	0	657	1106
LRR	0	1	3	0	36	53	1	258	406
NBER	0	29	68	4	61	138	0	367	745
NBWR	0	221	368	0	40	85	0	162	377
URR	0	0	0	0	19	29	1	303	705
WHR1	0	25	58	0	754	1510	7	2013	4530
WHR2	0	55	62	0	1684	1953	0	1249	1777
National	0	331	559	4	2770	4054	9	5009	9646

Source: HMIS, 2014

Table 30: Family Planning Services Revisit for Jadelle and Condoms – 2014

Regions	Jadelle			Male Condon			Female condom		
	<15Yrs	15-24 Yrs	>24yrs	<15Yrs	15-24 Yrs	>24yrs	<15Yrs	15-24 Yrs	>24yrs
CRR	0	0	0	10	780	1046	0	0	0
LRR	0	28	41	34	335	489	0	3	
NBER		7	18	12	282	640	0	1	1
NBWR	0	0	0	0	123	744	0	0	26
URR	0	0	0	0	534	755	0	7	13
WHR1	0	34	162	0	2765	6431	0	34	30
WHR2	0	320	336	0	5510	6511	0	0	0
National	0	389	557	56	10329	16616	0	45	70

Source: HMIS, 2014

Table 31: Family Planning Services Revisit for Microlut and Depo – 2014

Regions	Microlut			Depo		
	<15Yrs	15-24 Yrs	>24yrs	<15Yrs	15-24 Yrs	>24yrs
CRR	0	0	0	0	1365	2691
LRR	0	0	0	2	690	1345
NBER		5	16	6	621	1437
NBWR	0	13	12	2	633	1337
URR	0	0	0	0	391	1334
WHR1	0	288	511	60	3332	7558
WHR2	0	79	87	8	1370	2424
National	0	385	626	78	8402	18126

Source: HMIS, 2014

Table 32: Family Planning Services Revisit for Foam and IUCD – 2014

Regions	Foam			IUCD		
	<15Yrs	15-24 Yrs	>24yrs	<15Yrs	15-24 Yrs	>24yrs
CRR	0	2	4	0	8	18
LRR	0	4	3	0	0	0
NBER	0	0	0	0	10	0
NBWR	0	0	0	0	0	2
URR	0	0	0	0	0	0
WHR1	0	9	10	0	10	62
WHR2	0	0	0	0	79	95
National	0	15	17	0	107	177

Source: HMIS, 2014

9.0 HIV Counseling and Testing

Table 33: Number of HIV Counseling and Testing by region -2014

HIV Counseling and Testing													
Regions	Pre-Test		Test		Post Test		Positives by HIV Type						Total Positives
	Male	Female	Male	Female	Male	Female	S1		S2		S3		
							Male	Female	Male	Female	Male	Female	
CRR	1876	3416	1871	3400	1867	3400	58	174	8	41	11	32	324
LRR	498	746	498	737	498	737	47	48	15	17	11	25	163
NBRE	843	1150	382	1138	382	1138	21	42	4	8	15	19	109
NBRW	250	384	246	381	246	380	12	14	4	1	1	8	40
URR	2770	4332	2763	4312	2718	4310	45	126	24	10	9	17	231
WR1	11252	6833	11181	6588	10842	6570	440	591	55	64	100	237	1487
WR2	7495	11347	7421	11281	7421	11278	391	648	61	87	55	144	1386
National	24984	28208	24362	27837	23974	27813	1014	1643	171	228	202	482	3740

Source: NAS, 2014

Table 34: Number of Adults and Children with advanced HIV Infection currently receiving ART end 2014

Anti-Retroviral Therapy (ART)						
Regions	Paediatrics			Adult		
	Male	Female	Male	Female	Male	Female
CRR	11	13	24	70	206	276
LRR	4	7	11	26	86	112
NBRE	13	8	21	47	120	167
NBRW	0	0	0	0	0	0
URR	4	4	8	71	202	273
WR1	56	57	113	288	716	1004
WR2	104	82	186	456	1698	2154
National	192	171	363	958	3028	3986

Source: NAS, 2014

The program attained a cumulative coverage of 91% of 2014 target for ART for both adults and pediatrics. However, the ART coverage of all PLHIV in 2014 is 23% (Adult=24%, children=14%) a slight increase from 21% (Adult=22%, children=12%) in 2013 (NAS Annual Report 2014)

Table 35: HIV prevention of mother-to-child transmission (PMTCT) by region -2014

Regions	Pre- Test counseled	Test	Post Test counseled	Positives by Type			Total
				S1	S2	S3	
CRR	8706	8360	8277	80	18	23	121
LRR	1466	1456	1456	15	5	7	27
NBRE	2761	2753	2753	20	1	9	30
NBRW	1381	1375	1190	5	0	3	8
URR	8905	8948	8863	65	3	6	74
WR1	19770	19308	19267	210	27	32	269
WR2	14609	14352	14352	182	27	29	238
National	57598	56552	56158	577	81	109	767
PMTCT Pregnant women who received triple combination therapy for the first time							713
PMTCT Infants born to HIV positive mothers who were tested for HIV							220
PMTCT Infants born to HIV positive mothers who tested positive for HIV							41
PMTCT Infants born to HIV positive mothers who were seen and aged 2 months received Cotrimoxazole prophylaxis							297

Source: NAS, 2014

Table 36: Key Performance Indicators for HIV programme in 2014

Indicators	Target 2014	Result Achieved 2014
Number and % of people (15-49 yrs.) who received HCT and know their status	40,000	43713 (109%)
Number and % of pregnant women who received HCT and know their status	56425	52065(92%)
Number and percentage of HIV-positive pregnant women who received a complete course of antiretroviral prophylaxis over the past 12 months to reduce the risk of mother-to-child transmission	959	605(63%)
Number and % of adults and children with advanced HIV infection currently receiving ART	5036	4586(91%)

Source: NAS, 2014

The program attained a cumulative coverage of 91% of 2014 target for ART for both adults and pediatrics. However, the ART coverage of all PLHIV in 2014 is 23% (Adult=24%, children=14%) a slight increase from 21% (Adult=22%, children=12%) in 2013.

10.0 Other Diseases / Conditions of Special Focus Among Children < 5 Years (IMNCI)

10.1 IMNCI Outpatient Cases

Table 37: Number of IMNCI Outpatient Cases by Region-2014

Regions	Anaemia		Diarrhoea with blood/mucus (dysentery)		Malnutrition		Pneumonia	
	Male	Female	Male	Female	Male	Female	Male	Female
CRR	387	480	1225	1168	77	256	3563	3337
LRR	395	395	417	379	0	125	2404	2191
NBER	357	378	676	580	34	18	2208	1999
NBWR	231	222	795	600	55	91	2148	2046
URR	263	285	469	433	1	108	3876	3398
WHR 1	1107	1291	843	720	803	766	1705	1597
WHR 2	1062	1284	944	916	171	294	2729	2863
National	3802	4335	5369	4796	1141	1658	18633	17431

Source: HMIS, 2014

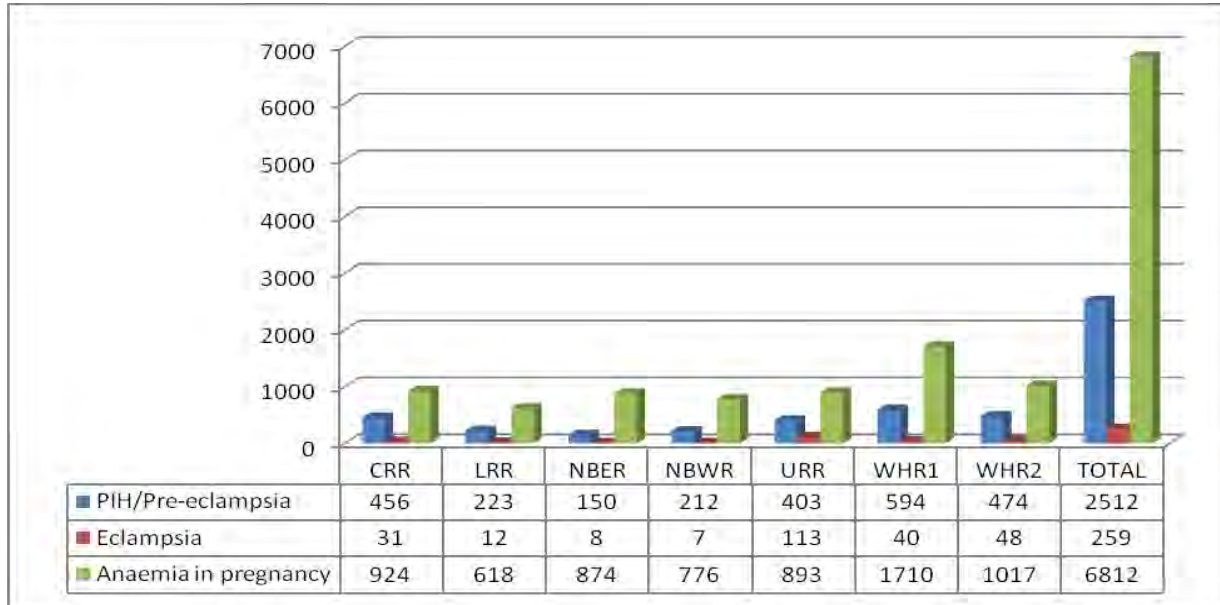
Table 38: Number of IMNCI Outpatient Cases by Region-2014

Regions	Low weight With Anaemia		Measles with eye or mouth complications		Serious possible bacterial infection	
	Male	Female	Male	Female	Male	Female
CRR	93	122	29	32	1755	1639
LRR	56	71	84	45	264	239
NBER	26	31	0	0	218	238
NBWR	14	15	12	12	412	446
URR	17	22	18	15	156	150
WHR 1	168	304	229	305	957	939
WHR 2	162	209	44	46	363	403
National	536	774	416	455	4125	4054

Source: HMIS, 2014

11.0 Maternal conditions

Figure 3: Number of Maternal conditions by Region-2014



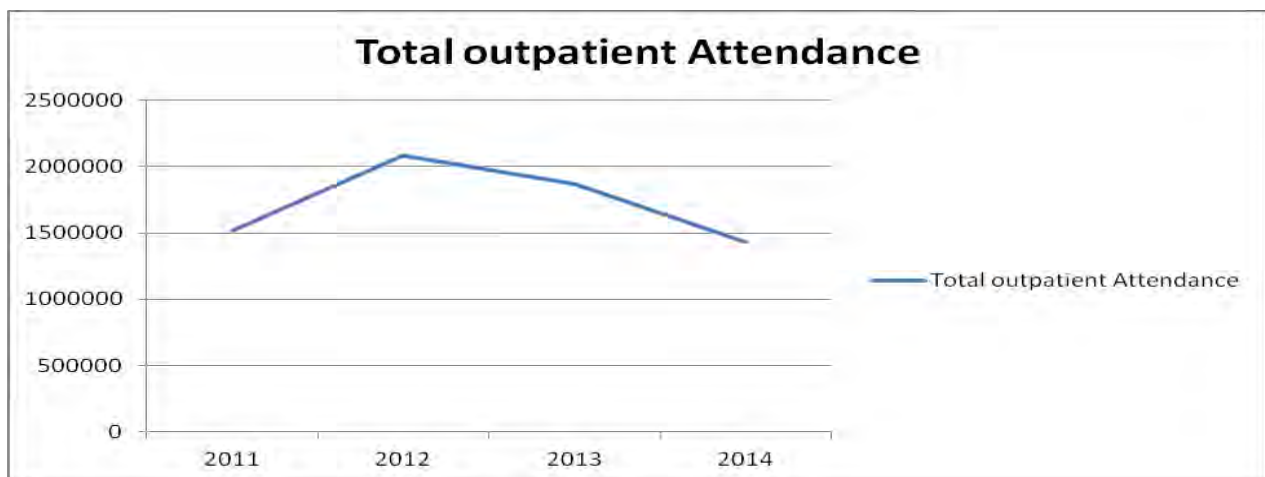
Source: HMIS, 2014

Out of the 9583 maternal cases reported in 2014, 71.08% were Anaemia in Pregnancy.

Pregnancy induced hypertension was 26.21 % and Eclampsia was 2.70%. URR recorded the highest number of Eclampsia cases.

12.0 Outpatients Cases

Figure 4: Outpatient Attendance from 2011 to 2014



Source: HMIS, 2014

12.1 Uncomplicated confirmed Malaria

Table 39: Number of Uncomplicated confirmed Malaria by Region - 2014

Regions	Uncomplicated RDT confirmed malaria cases					Uncomplicated BF Confirmed malaria cases				
	Male < 5yrs.	Female < 5 yrs.	Male >5 yrs.	Female > 5 yrs.	Pregnancy case	Male < 5 yrs.	Female < 5 yrs.	Male > 5 yrs.	Female > 5 yrs.	Pregnancy case
CRR	837	584	3528	3405	139	463	428	657	776	35
LRR	308	230	2004	1499	76	65	59	199	253	32
NBER	293	251	1431	1167	40	60	24	163	144	8
NBWR	213	157	1003	843	34	21	26	79	79	8
URR	1489	1329	10594	10968	562	167	150	595	784	58
WHR1	2094	2509	11858	10088	445	5358	5450	15649	18616	551
WHR2	3052	2752	12242	11686	275	1346	1209	5998	6103	206
National	8286	7812	42660	39656	1571	7480	7346	23340	26755	898

Source: HMIS, 2014

Table 40: Total number of Uncomplicated confirmed Malaria by age group by Region - 2014

Regions	<5 yrs. of age	>5 yrs. of age	Total
CRR	2312	8540	10852
LRR	662	4063	4725
NBER	628	2953	3581
NBWR	417	2046	2463
URR	3135	23561	26696
WHR1	15411	57207	72618
WHR2	8359	36510	44869
National	30924	134880	165804

Source: HMIS, 2014

The under-five accounted for 18.65% of the total confirmed malaria cases reported in 2014.

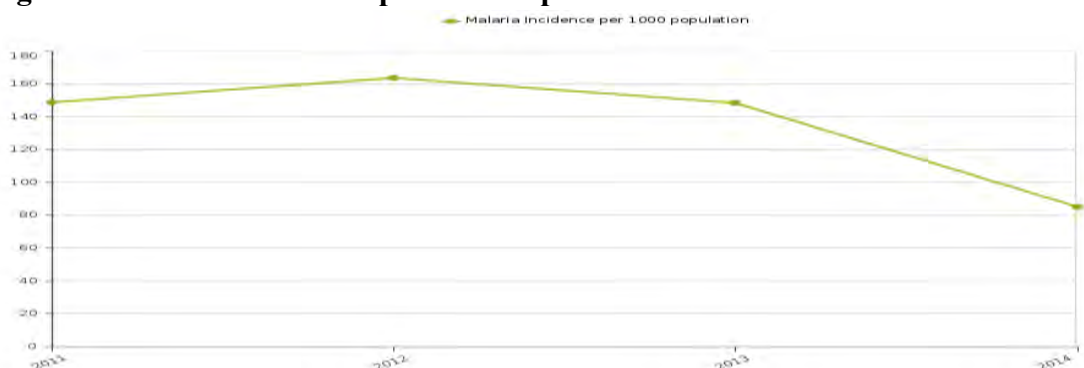
81.34% of the total confirmed cases were more than five years of age. 60.30% of the total malaria confirmation was done using RDTs.

Table 41: Number of Long Lasting Insecticides Nets distributed by region- 2014

Regions	<5 Female	<5 Male	Pregnant women
CRR	1057	947	2128
LRR	549	455	1083
NBER	1088	1128	983
NBWR	1097	1143	1579
URR	94	73	83
WHR 1	5982	6131	6444
WHR 2	605	532	791
National	10472	10409	13091

Source: HMIS, 2014

Figure 5: Malaria Incidence per 1000 Population from 2011 to 2014



Source: HMIS, 2014

The malaria incidence per 1000 population increased from 150 /1000 in 2011 to 165/1000 in 2012 and subsequently dropped to 148 /1000 in 2013 and further declined to 85/1000 population in 2014.

Table 42: Number of Sexually Transmitted Infection- 2014

Regions	Vaginal discharge	Urethral discharge	Other STI	Low abdominal pain pregnancy
CRR	2645	888	3182	4197
LRR	1045	430	750	1297
NBER	1259	234	787	2285
NBWR	936	306	1740	2175
URR	2808	621	2105	3767
WHR1	5365	1202	2976	3875
WHR2	1598	476	6491	1990
National	15656	4157	18031	19586

Source: HMIS, 2014

Table 43: Number of Diseases reported on >5 years by Region-2014

Regions	Differentially able		Helminth infestation		NOMA		Phobia	
	Male	Female	Male	Female	Male	Female	Male	Female
CRR	1	2	673	876	0	0	0	0
LRR	2	1	316	396	0	0	0	0
NBER	0	0	197	211	0	0	0	0
NBWR	4	3	244	347	0	7	0	0
URR	6	5	371	477	0	0	0	0
WHR 1	87	138	1299	1555	0	0	0	0
WHR 2	145	167	578	646	0	0	0	0
National	245	316	3678	4508	0	7	0	0

Source: HMIS, 2014

These are infections requiring laboratory and adequate clinical attention for their detection and management. Regional variation in incidence can be attributed to availability of required services and is evident in 3 of the regions with tertiary care facilities (hospitals in WHR, NBER and CRR). These diseases have no preference for gender and all sexes are almost equally affected in all the regions across the country. The percentage increase or decrease entirely depends on regional overall attendances. Improvements in environmental and nutritional programmes and strategies will contribute immensely to the reduction of incidence of these diseases.

Table 44: Number of Diseases Reported on >5 years by Region 2014

Regions	Skin disorder		Anaemia		Dysentery		Pneumonia	
	Male	Female	Male	female	Male	female	Male	Female
CRR	2804	3428	482	1438	786	1060	1927	2323
LRR	1847	2318	310	868	308	476	873	1247
NBER	1103	1305	323	986	175	362	911	1270
NBWR	932	1073	129	516	274	422	556	805
URR	1884	2329	446	1438	477	800	2209	3049
WHR1	8054	9771	845	1878	504	631	628	674
WHR2	2560	2705	884	2056	679	970	1873	2334
National	19184	22929	3419	9180	3203	4721	8977	11702

Source: HMIS, 2014

Table 45: Number of Eye Conditions by Region 2014

Regions	Cataracts		Conjunctivitis		Trachoma	
	Male	Female	Male	Female	Male	Female
CRR	141	161	1260	1416	7	6
LRR	23	26	660	651		0
NBER	245	293	1235	1188	12	12
NBWR	0	2	390	430	2	4
URR	27	39	488	602	9	15
WHR1	272	333	5148	5902	51	43
WHR2	435	667	3000	2952	33	54
National	1143	1521	12181	13141	114	134

Source: HMIS, 2014

Table 46: Number of Eye Conditions by Region 2014

Regions	Glaucoma		Ophthalmia neonatarium		Other eye condition	
	Male	Female	Male	Female	Male	Female
CRR	118	66	7	18	0	0
LRR	5	2	12	15	0	0
NBER	73	59	7	5	11	12
NBWR	28	33	3	4	1	0
URR	5	3	6	3	0	0
WHR1	155	160	111	121	1	2
WHR2	106	122	34	45	14	13
National	490	445	180	211	27	27

Source: HMIS, 2014

Trachoma is among the diseases targeted for elimination and the incidence has significantly dropped in all the regions with improved national eye services and management. Conjunctivitis dominance is expected as is a disease conditions manifested by so many other diseases. Cataract is a major eye problem and prevalence seems a bit high still considering the level of achievement of target indicators. Sex dominance can be again attributed to the natural global gender disparity affecting all countries. Ophthalmic neonatarium is a condition affecting new borns most of whom acquire infection from labour related care and management. Improvement in clean delivery by Infection prevention and control strategies in labour and other neonatal wards should be strengthened in all regions. Other eye conditions are shared between injuries and other occupational related

problems sustained from economic production and socioeconomic domestic activities. Their prevalence increases by day as far as advancements in cheap labour and industrialization are concerned.

Maintenance of public health and other domestic policies could immensely contribute to the reduction of morbidity due to eye conditions

Table 47: Number of Mental Disorder by region-2014

Regions	Organic psychosis		Epilepsy		Drug induced psychosis		Depression	
	Male	Female	Male	Female	Male	Female	Male	Female
CRR	64	55	564	504	0	31	14	11
LRR	1	3	216	186	0	0	6	2
NBER	105	110	507	532	11	17	0	2
NBWR	1	2	370	398	0	2	7	10
URR	13	25	165	130	1	4	39	11
WHR1	209	113	620	785	126	663	230	144
WHR2	44	45	551	618	1	26	38	36
National	437	353	2993	3153	139	743	334	216

Source: HMIS, 2014

Table 48: Number of Mental Disorder by region-2014

Regions	Mania		Schizophrenia		Other mental disorder	
	Male	Female	Male	Female	Male	Female
CRR	7	8	7	71	93	88
LRR	1	2	1	4	23	17
NBER	5	1	5	3	53	47
NBWR	5	6	5	3	17	23
URR	3	4	3	20	9	12
WHR1	98	76	98	196	212	198
WHR2	1	14	1	15	30	25
National	120	111	120	312	437	410

Source: HMIS, 2014

12.2 Non Communicable Diseases cases by Region – 2014

Table below shows that hypertension and diabetes were the highest major non communicable diseases, being more prevalent among women in the entire six health administrative region in 2014. While hepatic, cardiac disorders and renal failure are more prominent in men in 2014 as shown in table below

Table 49: Non Communicable Diseases cases by Region – 2014

Regions	Hypertension		Diabetes		Asthma		Cardiac disorder	
	Male	Female	Male	Female	Male	Female	Male	Female
CRR	4352	7942	411	518	833	937	18	22
LRR	2034	4416	292	278	381	430	46	90
NBER	2125	4427	360	316	387	311	33	32
NBWR	1620	3681	384	416	352	471	12	18
URR	2284	4711	155	273	346	489	20	31
WHR1	6869	16861	4470	6011	1417	1591	89	120
WHR2	4013	7567	443	590	877	949	196	145
National	23297	49605	6515	8402	4593	5178	414	458

Source: HMIS, 2014

Table 50: Major Conditions by Region -2014

Regions	Cardiac disorder		Liver Cancer		Renal failure		Other non-communicable disease	
	Male	Female	Male	Female	Male	Female	Male	Female
CRR	18	22	8	1	1	1	244	294
LRR	46	90	0	2	6	1	130	114
NBER	33	32	11		8	11	1	3
NBWR	12	18	1	3	0	0	17	17
URR	20	31	1		2	0	501	125
WHR1	89	120	7	10	59	33	44	63
WHR2	200	148	19	15	36	14	78	93
National	418	461	47	31	112	60	1015	709

Source: HMIS, 2014

Table 51: Number of Accidents Cases by Region-2014

Regions	Dog bites		Road traffic crash		Other injuries		Snake bites	
	Male	Female	Male	Female	Male	Female	Male	Female
CRR	88	53	364	173	2834	2001	66	54
LRR	36	25	156	78	1427	751	17	11
NBER	38	23	182	66	1443	754	43	36
NBWR	55	38	146	117	1708	894	33	19
URR	77	32	396	138	1378	883	20	15
WHR1	102	95	1114	597	4025	2229	6	6
WHR2	81	88	329	206	2418	1473	42	52
National	477	354	2687	1375	15233	8985	227	193

Source: HMIS, 2014

Table 52: Number of Accidents Cases by Region-2014

Regions	Burns		Drowned		Fall from height	
	Male	Female	Male	Female	Male	Female
CRR	229	215	4	2	323	212
LRR	151	138	1		124	71
NBER	90	80	3	1	119	61
NBWR	140	112	10	10	123	48
URR	180	124	9	19	196	129
WHR1	442	493	6	4	316	193
WHR2	296	295	11	1	141	80
National	1528	1457	44	37	1342	794

Source: HMIS, 2014

Table 53: Number of Accidents Cases by Region-2014

Regions	Fracture		Ingestion of Harmful substance		Other bites	
	Male	Female	Male	Female	Male	Female
CRR	45	15	25	25	224	169
LRR	21	6	37	26	87	93
NBER	14	7	22	16	130	89
NBWR	19	9	27	25	93	52
URR	59	54	42	24	196	121
WHR1	56	27	129	98	66	72
WHR2	16	13	57	49	298	301
National	230	131	339	263	1094	897

Source: HMIS, 2014

Table 54: Number of Oral Disorder Cases by Region-2014

Regions	Toothache		Oral thrust/ulcer		Gingivitis		Dental abscess		Other oral disorder	
	Male	Female	Male	Female	Male	Female	Male	Female	Male	Female
CRR	814	1261	394	511	91	91	372	481	1037	1248
LRR	603	860	412	515	89	122	137	198	151	238
NBER	727	1010	356	446	52	60	562	747	457	525
NBWR	330	743	399	535	37	57	150	251	319	378
URR	559	932	191	280	22	23	201	269	77	110
WHR1	5751	6340	1547	1258	203	197	1360	1586	1489	1672
WHR2	2408	3125	512	734	82	112	497	635	270	281
National	11192	14271	3811	4279	576	662	3279	4167	3800	4452

Source: HMIS, 2014

Table 55: Number of Maternal conditions by Region-2014

Regions	PIH/Pre-Eclampsia	Eclampsia	Anaemia in pregnancy
CRR	456	31	924
LRR	223	12	618
NBER	150	8	874
NBWR	212	7	776
URR	403	113	893
WHR1	594	40	1710
WHR2	474	48	1017
National	2512	259	6812

Source: HMIS, 2014

13.0 Inpatient Admission

Table 56: Number of Inpatient Admission by Region – 2014

Regions	Male	Female	Total	Percentage
CRR	2355	2416	4771	20.7
LRR	572	654	1226	5.3
NBER	1204	1250	2454	10.6
NBWR	547	550	1097	4.8
URR	2243	2011	4254	18.4
WHR1	2921	3336	6257	27.1
WHR2	1537	1481	3018	13.1

Source: HMIS, 2014

The total number of admission in the health facilities was 23,077. Of this WHR1 recorded the highest number of cases of 6257 representing 27.11%. CRR, 20.67% URR, 18.43% WHR2 13.08%. The region with the lowest percentage of admission was NBWR, 4.8%.

Table 57 Admission due to Severe confirmed Malaria by age and gender- 2014

Regions	Severe RDT Confirmed malaria					Severe lab-confirmed malaria				
	Male < 5 years	Female < 5 years	Male > 5 years	Female > 5 years	In pregnancy	Male < 5 years	Female < 5 years	Male > 5 years	Female > 5 years	In-pregnancy
CRR	55	36	118	126	25	74	56	86	131	10
LRR	11	10	50	29	1	7	2	8	4	1
NBER	31	17	29	25	1	4	10	28	19	3
NBWR	7	2	22	15	2	25	19	11	10	0
URR	65	49	265	357	65	65	36	14	22	5
WHR1	60	53	94	122	64	253	244	656	587	175
WHR2	14	18	56	53	14	159	96	187	214	17
National	243	185	634	727	172	587	463	990	987	211

Source: HMIS, 2014

Table 58: Total Admission due to Severe Confirmed Malaria by age group - 2014

Regions	< 5 years of age	> 5 years of age
CRR	221	496
LRR	30	93
NBER	62	105
NBWR	53	60
URR	215	728
WHR1	610	1698
WHR2	287	541
National	1478	3721

Source: HMIS, 2014

A total number of 5, 199 severe confirmed malaria cases were reported in 2014. Out of these number 71.57% were confirmed malaria greater than five years, 28.43% were confirmed malaria less than five and 7.37% were confirmed malaria in-pregnancy.

13.1 Admission due to Sexually Transmitted Infections

Table 59: Number of Admission due to Sexually Transmitted Infections by Region – 2014

Regions	Urethral discharge	Vaginal discharge	Lower abdominal pain in pregnancy	Other STI
CRR	34	22	52	172
LRR	0	5	36	4
NBER	5	45	51	81
NBWR	10	22	19	16
URR	3	35	51	43
WHR1	54	97	42	115
WHR2	6	4	6	157
National	112	230	257	588

Source: HMIS, 2014

13.2 Admission due to IMNCI Cases

Table 60: Number of Admission due to IMNCI Cases by Region -2014

Regions	Anaemia		Diarrhoea with blood / mucus (dysentery)		Severe pneumonia		Skin disorder	
	Male	Female	Male	Female	Male	Female	Male	Female
CRR	87	48	14	14	515	396	20	20
LRR	40	42	3	2	168	151	5	3
NBER	44	44	2	4	278	169	21	17
NBWR	17	19	5	3	148	134	14	10
URR	27	19	1	0	649	513	6	4
WHR 1	46	67	28	26	449	310	63	41
WHR 2	34	36	21	12	196	182	13	14
National	295	275	74	61	2403	1855	142	109

Source: HMIS, 2014

Table 61: Number of IMNCI Inpatient Cases by Region-2014

Regions	Acute ear infection		Chronic ear infection		Eye infection		Anaemia	
	Male	Female	Male	Female	Male	Female	Male	Female
CRR	1	2	1	3	0	0	18	6
LRR	0	2	0	1	0	0	1	1
NBER	0	0	1	0	1	3	9	20
NBWR	0	2	0	0	2	1	0	0
URR	0	0	0	0	1	1	0	0
WHR 1	4	1	1	0	4	3	8	2
WHR 2	8	8	0	0	6	14	9	5
National	12	9	1	0	10	17	17	7

Source: HMIS, 2014

Table 62: Number of IMNCI Inpatient Cases by Region-2014

Regions	Measles with eye or mouth complications		Serious possible bacterial infection	
	Male	Female	Male	Female
CRR	0	0	142	95
LRR	0	0	32	33
NBER	0	0	75	77
NBWR	0	0	11	11
URR	0	0	30	23
WHR 1	17	6	148	2
WHR 2	0	3	22	31
National	17	9	460	272

Source: HMIS, 2014

13.3 Admission due to maternal conditions**Table 63: Number of Admission due to Maternal Conditions by Region-2014**

Regions	Pre-Eclampsia	Eclampsia	Anaemia in pregnancy
CRR	164	24	72
LRR	51	24	39
NBER	86	23	83
NBWR	25	3	6
URR	117	49	132
WHR1	199	40	117
WHR2	24	25	28
National	666	188	477

Source: HMIS, 2014

13.4 Admission due to Diseases and condition in ≥ 5 years of age**Table 64: Number of Admission due to Diseases Reported on ≥ 5 years by Region-2014**

Regions	Dysentery		Diarrhea with severe dehydration		Differentially abl		Helminth infestation		NOMA	
	Male	Female	Male	Female	Male	Female	Male	Female	Male	Female
CRR	45	46	97	99	1	0	1	0	0	0
LRR	6	5	28	26	0	0	0	0	0	0
NBER	12	9	7	59	0	0	0	0	0	0
NBWR	8	14	37	34	0	0	0	0	0	0
URR	12	11	45	45	0	0	0	0	0	0
WHR1	44	51	116	111	0	2	20	50	0	0
WHR2	36	24	79	81	35	54	0	0	0	0
National	163	160	476	455	36	56	21	50	0	0

Source: HMIS, 2014

Table 65: Number of Admission due to Diseases Reported on \geq 5years by Region-2014

Regions	Severe pneumonia		Skin disorder		Anaemia	
	Male	Female	Male	Female	Male	Female
CRR	716	534	37	46	238	264
LRR	192	164	5	3	43	56
NBER	349	265	27	20	124	138
NBWR	183	159	22	16	42	45
URR	770	619	16	5	114	127
WHRI	08	38	101	105	124	213
WHR2	305	252	30	23	176	118
National	3123	2431	238	218	861	961

Source: HMIS, 2014

13.5 Admission due to Eye conditions**Table 66: Number of Admission due to Eye Conditions by Region-2014**

Regions	Cataracts		Conjunctivitis		Glaucoma	
	Male	Female	Male	Female	Male	Female
CRR	0	0	1	2	0	0
LRR	0	0		0	0	0
NBER	60	45	4	0	0	0
NBWR	0	0	1	3	0	0
URR	0	0		0	0	0
WHR1	2	8	3	3	0	0
WHR2	78	75		0	0	0
National	140	128	9	8	0	0

Source: HMIS, 2014

Table 67: Number of Admission due to Eye Conditions by Region-2014

Regions	Ophthalmia neonatum		Other eye condition		Trachoma	
	Male	Female	Male	Female	Male	Female
CRR	0	0	0	0	0	0
LRR	0	0	0	0	0	0
NBER	1	0	11	12	4	7
NBWR	0	0	1	0	0	0
URR	1	1	0	0	0	0
WHR1	1	1	1	2	0	0
WHR2	0	0	14	13	3	9
National	3	2	27	27	7	16

Source: HMIS, 2014

Table 68: Number of Admissions due to mental health by region in 2014

Regions	Organic psychosis		Epilepsy		Drug induced psychosis		Depression	
	Male	Female	Male	Female	Male	Female	Male	Female
CRR	2	1	3	9	0	0	0	2
LRR		0	2	3	0	0	0	0
NBER	1	4	13	16	2	0	0	1
NBWR	0	0	6	5	0	1	0	0
URR	0	0	2	4	0	0	0	0
WHR1	1	0	9	15	1	0	1	2
WHR2	0	0	10	6	0	0	0	0
National	4	5	45	58	3	1	1	5

Source: HMIS, 2014

Table 69: Number of Admissions due to mental health by region in 2014

Regions	Mania		Schizophrenia		Other mental disorder	
	Male	Female	Male	Female	Male	Female
CRR	1	0	0	2	0	0
LRR	0	0	0	0	0	2
NBER	0	0	0	0	0	0
NBWR	0	0	0	0	1	0
URR	0	0	0	0	0	0
WHR1	10	0	1	0	0	0
WHR2	0	0	0	0	6	3
National	11	0	1	2	7	5

Source: HMIS, 2014

13.6 Admission due to NCDs

Table 70: Number of Admission due to Non Communicable Diseases cases by Region-2014

Regions	Hypertension		Liver Cancer		Other non-communicable	
	Male	Female	Male	Female	Male	Female
CRR	140	196	9	9	244	294
LRR	24	37	5	1	130	114
NBER	110	78	10	2	1	3
NBWR	56	59	1	2	17	17
URR	195	167	0	0	501	125
WHR1	277	431	8	5	44	63
WHR2	54	77	1	2	78	93
National	856	1045	34	21	1015	709

Source: HMIS, 2014

Table 71: Number of Admission due to Non Communicable Diseases cases by Region-2014

Regions	Renal failure		Diabetes		Asthma	
	Male	Female	Male	Female	Male	Female
CRR	1	0	34	30	32	32
LRR	0	1	13	9	4	12
NBER	0	0	18	18	25	11
NBWR	0	1	20	13	2	11
URR	0	0	23	15	22	13
WHR1	2	3	129	249	71	86
WHR2	13	6	27	24	21	21
National	16	11	264	358	177	186

Source: HMIS, 2014

Table 72: Number of Admission due to Accident cases by Region-2014

Regions	Burns		Road traffic crash		Dog bites	
	Male	Female	Male	Female	Male	Female
CRR	50	46	26	4	0	2
LRR	8	9	3	2	0	0
NBER	29	22	27	12	0	1
NBWR	16	14	9	2	3	3
URR	16	7	36	21	3	2
WHR1	29	34	4	4	0	0
WHR2	20	15	7	3	1	0
National	168	147	112	48	7	8

Source: HMIS, 2014

Table 73: Number of Admission due to Accident cases by Region-2014

Regions	Drowned		Fall from height		Fracture	
	Male	Female	Male	Female	Male	Female
CRR	0	0	13	5	6	1
LRR	0	1	4	1	0	1
NBER	0	1	11	1	3	2
NBWR	1	1	2	1	3	0
URR	0	0	16	6	1	2
WHR1	2	0	4	3	2	0
WHR2	1	1	2	0	1	0
National	4	4	52	17	16	6

Source: HMIS, 2014

Table 74: Number of Admission due to Accident Cases by Region-2014

Regions	Snake bites		Ingestion of Harmful substance	
	Male	Female	Male	Female
CRR	21	12	3	0
LRR	2	0	0	4
NBER	26	15	7	5
NBWR	5	5	2	1
URR	10	4	1	0
WHR1	1	0	4	3
WHR2	3	2	0	0
National	68	38	17	13

Source: HMIS, 2014

Table 75: Number of Admission due to Accident Cases by Region-2014

Regions	Other bites		Other injuries	
	Male	Female	Male	Female
CRR	7	0	36	12
LRR	0	0	3	5
NBER	5	0	14	7
NBWR	1	1	12	11
URR	3	2	0	1
WHR1	1	0	15	0
WHR2	3	0	10	2
National	20	3	90	38

Source: HMIS, 2014

14.0 Deaths**Table 76: Number of Deaths due to Non Communicable Diseases Cases by Region-2014**

Regions	Asthma		Hypertension		Diabetes		Liver Cancer	
	Male	Female	Male	Female	Male	Female	Male	Female
CRR	4	0	11	16	6	2	2	1
LRR	0	0	4	3	2	0	0	0
NBER	4	0	6	11	3	3	3	1
NBWR	0	0	8	1	0	0	0	0
URR	3	1	7	12	2	0	0	0
WHR1	1	2	28	30	11	12	2	0
WHR2	1	0	10	15	4	3	0	0
National	13	3	74	88	28	20	7	2

Source: HMIS, 2014

Table 77: Number of Deaths due to Non Communicable Diseases Cases by Region-2014

Regions	Other Cancer		Renal failure		Other non-communicable	
	Male	Female	Male	Female	Male	Female
CRR	0	0	0	0	27	13
LRR	0	0	0	0	15	13
NBER	2	0	0	0	0	0
NBWR	0	0	1	0	1	0
URR	0	0	0	0	4	1
WHR1	1	1	0	0	15	16
WHR2	0	0	1	2	12	8
National	3	1	2	2	74	51

Source: HMIS, 2014

Table 78: Number of Deaths due to Accident cases by Region – 2014

Regions	Burns		Dog bites		Drowned	
	Male	Female	Male	Female	Male	Female
CRR	1	1	0	0	2	0
LRR	0	0	0	0	0	0
NBER	1	0	0	0	0	1
NBWR	0	0	0	0	0	0
URR	0	1	0	0	0	0
WHR1	0	0	0	0	0	0
WHR2	0	0	0	0	0	0
National	0	2	0	0	2	1

Source: HMIS, 2014

Table 79: Number of Deaths due to Accident cases by Region – 2014

Regions	Fall from height		Fracture		Ingestion of Harmful substance	
	Male	Female	Male	Female	Male	Female
CRR	0	0	0	0	1	0
LRR	0	0	0	0	0	1
NBER	0	0	0	0	0	1
NBWR	0	0	0	0	0	0
URR	2	0	0	1	0	0
WHR1	0	0	0	0	0	0
WHR2	0	0	0	0	0	0
National	2	0	0	1	1	2

Source: HMIS, 2014

Table 80: Number of Deaths due to Accident cases by Region – 2014

Regions	Other bites		Other injuries	
	Male	Female	Male	Female
CRR	0	0	0	0
LRR	0	0	0	0
NBER	0	0	0	0
NBWR	0	0	0	0
URR	0	0	0	0
WHR1	0	0	0	0
WHR2	0	0	0	0
National	0	0	0	0

Source: HMIS, 2014

Table 81: Number of Deaths due to Accident cases by Region – 2014

Regions	Road traffic crash		Snake bites	
	Male	Female	Male	Female
CRR	0	1	1	0
LRR	0	0	0	0
NBER	0	0	0	1
NBWR	1	0	0	0
URR	1	0	0	0
WHR1	1	4	0	0
WHR2	0	0	0	0
National	3	5	1	1

Source: HMIS, 2014

Table 82: Number of Deaths due to maternal conditions by Region – 2014

Regions	Aneamia in pregnancy	Pregnancy induced hypertension/Pre-eclampsia	Eclampsia
CRR	7	2	0
LRR	0	7	2
NBER	0	0	0
NBWR	0	0	0
URR	0	1	1
WHR1	1	0	0
WHR2	0	0	0
National	8	10	3

Source: HMIS, 2014

Table 83: Number of Deaths due to Sexually Transmitted Diseases by Region – 2014

Regions	Urethral Discharge	Vaginal discharge	Lower abd pain pregnancy	Other STI	
	Male	Female	Female	Male	Female
CRR	2	0	0	2	4
LRR	0	0	0	0	0
NBER	1	0	0	1	0
NBWR	0	6	0	0	0
URR	0	0	0	0	0
WHR1	1	0	0	0	0
WHR2	0	0	0	3	3
National	4	6	0	6	7

Source: HMIS, 2014

14.1 Deaths due to IMNCI Cases

Table 84: Number of Deaths due to IMNCI Cases by Region – 2014

Regions	Anaemia		Diarrhoea with blood / mucus (dysentry)		Diarrhea severe dehydration		Severe pneumonia	
	Male	Female	Male	Female	Male	Female	Male	Female
CRR	8	5	0	2	4	11	12	12
LRR	2	1	0	0	1	2	3	6
NBER	1	4	0	0	2	6	11	10
NBWR	0	0	0	0	3	2	0	1
URR	1	0	0	0	1	3	18	10
WHR1	2	2	0	0	3	4	11	2
WHR2	2	4	0	0	4	2	11	8
National	16	16	0	2	18	30	66	49

Source: HMIS, 2014

Table 85: Deaths reported by the Health facilities in 2014

Regions	Maternal brought in dead	Other brought in dead		Dead On Arrival At Facility		Other Deaths On Arrival	
	Female	Male	Female	Male	Female	Male	Female
CRR	9	3	6	0	12	2	8
LRR	2	2	2	0	2	0	1
NBER	6	4	2	0	0	3	12
NBWR	0	2	1	0	1	11	13
URR	9	2	1	0	1	1	4
WHR1	5	8	9	6	4	6	4
WHR2	1	9	5	15	17	15	17
National	32	30	26	21	37	38	59

Source: HMIS, 2014

Table 86: Deaths at the Health facility by age group Region 2014

Regions	under 5 Deaths		5-14 Deaths		Above 14 Deaths	
	Male	Female	Male	Female	Male	Female
CRR	27	19	4	2	50	29
LRR	0	0	1		2	1
NBER	24	22	7	18	85	65
NBWR	7	7	2	2	21	17
URR	16	17	11	14	42	32
WHR1	10	18	8	5	227	209
WHR2	23	29	17	12	82	104
National	107	112	50	53	509	457

15.0 Immunization

Table 87: Number of Doses of Vaccines administered by region in 2014

Regions	BCG ≤ 1 years	Polio 0 ≤ 1 years	Hep B ≤ 1 years	Polio 1 ≤ 1 years	PENTA 1 ≤ 1 years	Pneumococcal 1 ≤ 1 years
CRR	11548	11852	11819	11502	10980	11067
LRR	3956	3985	4081	3569	3662	3754
NBER	5374	5589	5612	4598	5018	5037
NBWR	5142	5196	5349	4587	5086	4934
URR	12052	12075	11941	11729	11498	11430
WHR1	29513	29474	29568	25912	28052	27607
WHR2	12822	12414	12423	12968	11838	12070
National	80407	80585	80597	74865	76056	75899

Source: EPI, 2014

Table 88: Number of Doses of Vaccines administered by region in 2014

Regions	Polio 2 ≤ 1 years	PENTA 2 ≤ 1 years	Pneumococcal 2 ≤ 1 years	Polio 3 ≤ 1 years	PENTA 3 ≤ 1 years	Pneumococcal 3 ≤ 1 years
CRR	10963	10996	11003	10399	10805	10904
LRR	3444	3748	3643	3518	3582	3594
NBER	4585	5396	5131	4931	5010	4933
NBWR	4426	4836	4970	4735	4794	4874
URR	11676	10550	11309	10940	10969	11210
WHR1	25759	27516	27272	25319	27168	27160
WHR2	13027	12463	11892	12333	12181	11792
National	73880	75505	75220	72175	74509	74467

Source: EPI, 2014

Table 89: Number of Doses of Vaccines administered by region in 2014

Regions	Polio 2 ≤ 1 years		PENTA 2 ≤ 1 years		Pneumococcal 2 ≤ 1 years	
	Female	Male	Female	Male	Female	Male
CRR	5 207	5 545	5 250	5 629	4 893	5 276
LRR	1 695	1 635	1 637	1 609	1 596	1 595
NBER	2 198	2 527	2 197	2 539	2 169	2 460
NBWR	2 168	2 183	2 159	2 177	2 213	2 229
URR	5 938	6 265	5 394	5 682	5 095	5 544
WHR1	12 817	14 006	12 594	13 706	12 005	12 612
WHR2	5 478	5 864	5 174	5 537	4 739	5 003
National	35 501	38 025	34 405	36 879	32 710	34 719

Source: HMIS 2014

Table 90: Number of Doses of Vaccines administered by region in 2014

Regions	Total Polio 4+ administered \leq 1 years	Total Yellow Fever administered \leq 1 years	Total Measles administered \leq 1 years
CRR	10190	10819	10489
LRR	3859	3823	3880
NBER	4672	4972	4978
NBWR	5004	4841	4916
URR	12034	10806	10997
WHR1	27723	27004	26526
WHR2	12082	12798	12857
National	75564	75063	74643

Source: EPI, 2014

16.0 Antigen coverage in 2014**Table 91: Percentage of BCG, Hepatitis B and Penta coverage in 2014**

Regions	Total Population	Monthly Live births	Monthly Surviving Infants	BCG. COV	HEP B COV	PENTA1 COV	PENTA2 COV	PENTA3 COV
CRR	210,664	12,229	11,338	78%	90%	94%	96%	88%
LRR	78,892	4,204	3,895	79%	83%	88%	83%	82%
NBER	82,968	5,928	5,467	78%	80%	87%	87%	82%
NBWR	106,997	5,663	5,244	76%	76%	87%	83%	79%
URR	218,459	12,570	11,652	88%	91%	94%	95%	85%
WHR1	733,562	30,413	28,245	83%	89%	95%	93%	85%
WHR2	311,140	13,032	11,979	87%	83%	87%	89%	83%
National	1,431,542	71,007	65,841	88%	88%	94%	92%	85%

Source: EPI, 2014

Table 92: Percentage of Polio, Measles and Yellow Fever coverage in 2014

Regions	Polio 0 COV	POLIO 1 COV	POLIO 2 COV	POLIO 3 COV	POLIO 4 COV	MSL1 COV	MSL2 COV	Y/F COV
CRR	88%	101%	95%	88%	144%	89%	50%	88%
LRR	88%	90%	86%	85%	153%	86%	62%	86%
NBER	80%	87%	86%	83%	164%	85%	64%	84%
NBWR	77%	86%	82%	83%	132%	77%	50%	81%
URR	89%	106%	105%	95%	160%	94%	65%	91%
WHR1	88%	95%	95%	89%	139%	88%	51%	88%
WHR2	83%	94%	95%	89%	152%	94%	61%	90%
National	87%	96%	94%	88%	146%	88%	55%	87%

Source: EPI, 2014

Table 93: Percentage of PCV, Rota and TT coverage in 2014

Regions	PCV1 COV	PCV2 COV	PCV 3 COV	Rota 1 COV	ROTA 2 COV	ROTA 3 COV	TT1 COV	TT2+ COV
CRR	97%	90%	86%	76%	72%	65%	17%	56%
LRR	87%	86%	78%	85%	79%	75%	17%	50%
NBER	86%	85%	81%	74%	73%	69%	15%	48%
NBWR	89%	85%	81%	67%	67%	60%	17%	49%
URR	93%	92%	87%	72%	67%	64%	19%	50%
WHR1	92%	87%	91%	73%	69%	65%	23%	57%
WHR2	82%	81%	83%	67%	66%	66%	22%	51%
National	92%	88%	87%	74%	70%	77%	24%	63%

Source: EPI, 2014

17.0 Vitamin A. Prevention

Table 94: Number of doses of Vitamin A. administered by region – 2014

Regions	6-11 month		12-59 months		Postpartum
	Male	Female	Male	Female	
CRR	4956	4380	10265	9997	9743
LRR	1466	1444	4250	4063	2670
NBER	2122	1865	5227	5149	3822
NBWR	1903	1923	6209	6624	2885
URR	4844	4428	11854	11197	8845
WHR1	12780	12080	21690	20796	21367
WHR2	6066	5455	9824	8374	9824
National	34137	31575	69319	66200	59156

Source: HMIS, 2014

18.0 Referral

Table 95: Total number of referrals out from Health facilities by gender in 2014

Regions	<5YRS		>5yrs	
	Male	Female	Male	Female
CRR	327	337	1523	1324
LRR	219	222	630	1111
NBER	103	135	304	441
NBWR	123	87	583	743
URR	111	89	266	361
WHR1	197	183	890	1150
WHR2	230	268	563	1033
National	1310	1321	4759	6163

Source: HMIS, 2014

Table 96: Percentage of referrals out by gender - 2014

Regions	<5YRS		>5yrs	
	Male	Female	Male	Female
CRR	49.25	50.75	53.49	46.51
LRR	49.66	50.34	36.19	63.81
NBER	43.28	56.72	40.81	59.19
NBWR	58.57	41.43	43.97	56.03
URR	55.50	44.50	42.42	57.58
WHR1	51.84	48.16	43.63	56.37
WHR2	46.18	53.82	35.28	64.72
National	49.79	50.21	43.57	56.43

Source: HMIS, 2014

In 2014, 13, 553 referral out were made by the health facilities throughout the country. 19.4% of the referral out was less than five years of age. Among the age group less than five years, 49.79% were male. In the age group more than five years 56.43% were female and male accounts for 43.57%.

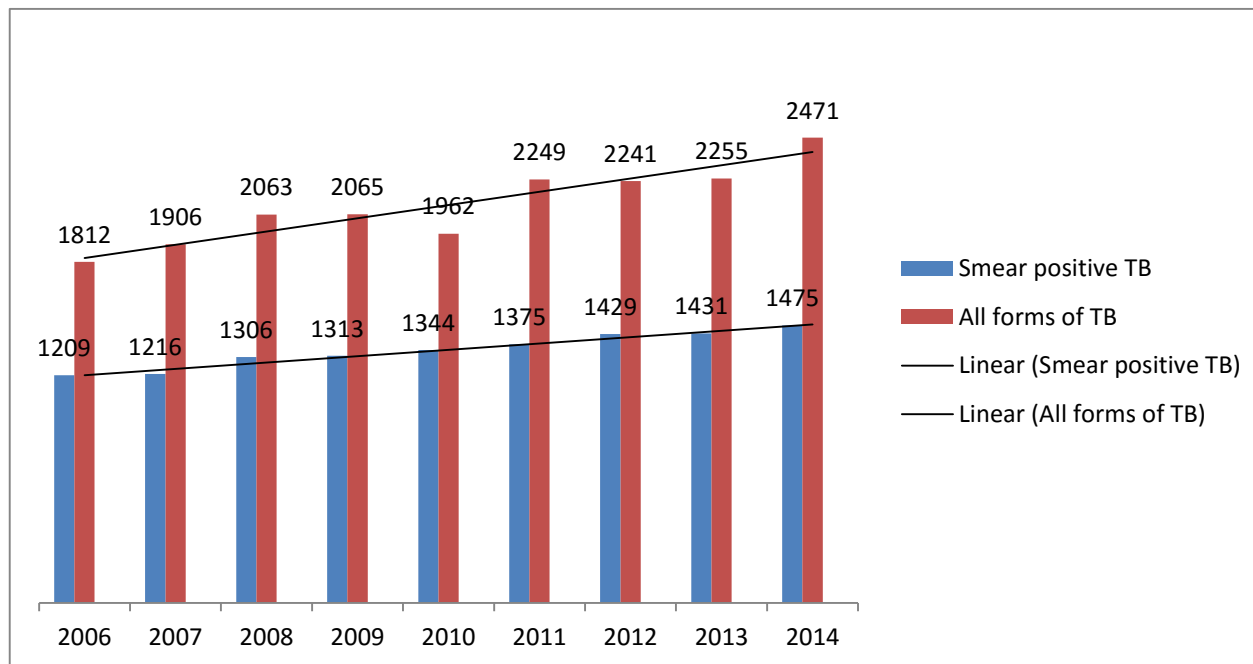
19.0 Tuberculosis

Table 97: Total case-notification all forms of tuberculosis by region-2014

Regions	VALUE
CRR	153
LRR	79
NBER	171
NBWR	74
URR	120
WHR1	1233
WHR2	641
National	2471

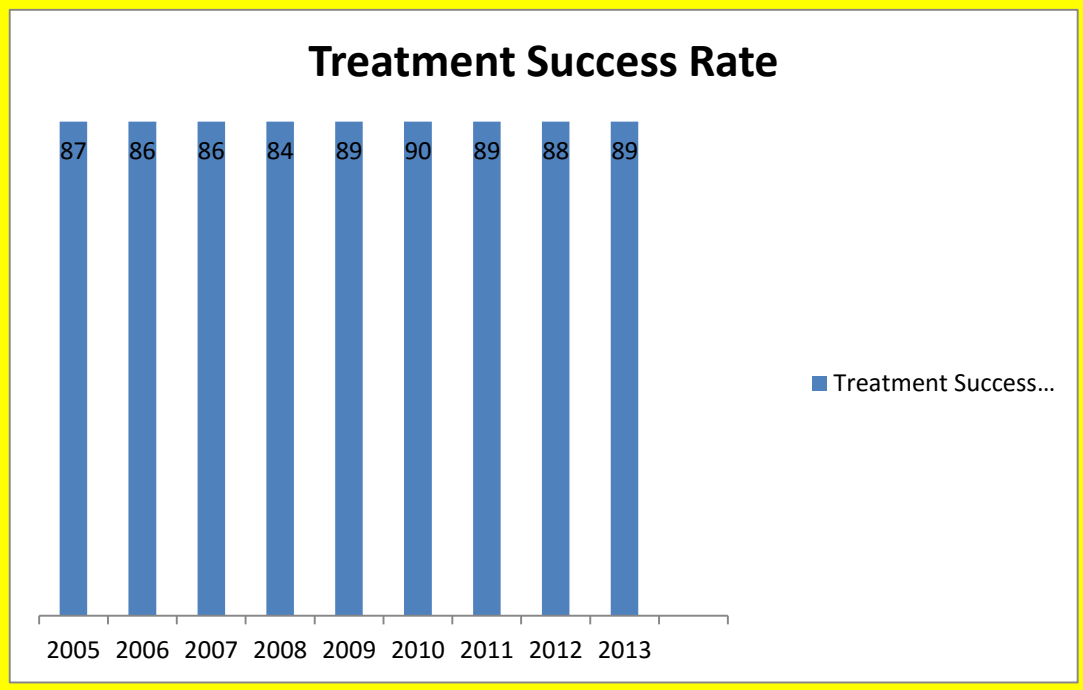
Source: NLTP, 2014

Figure 6: Chart showing the trend of TB case notification from 2006 to 2014



Source: NLTP, 2014

Figure 7: TB Treatment success rate 2005-2013



Source: NLTP, 2014

The figures above shows the trend of TB case notification from 2006 to 2013 and TB treatment success rate from 2005 to 2014. Figure 6 Indicates that there has been smooth increase in trend of TB case notification for all forms of TB up from 1812 in 2006 to 2471 in 2014. However, the major increase in case notification TB all forms were from 1962 cases in 2010 to 2249 cases in 2011. There has also been a significant gain in TB treatment success rate from 87% in 2005 to 90% in 2010 and a slight drop in 2011 to 89%.

20.0 Birth Registration

Table 98: Number of Birth Registration by Region- (Gambian Parents) – 2014

Regions	Early registration <1 Years		Late registration 1-5 years		Late registration over 5 years	
	Male	Female	Male	Female	Male	Female
CRR	1565	1432	1250	1186	3117	3047
LRR	648	688	699	708	882	709
NBER	1140	1075	839	801	1199	1281
NBWR	879	878	631	733	1216	1163
URR	2294	1889	1273	1150	2098	1899
WHR1	2717	2652	3310	3107	6632	6069
WHR2	1118	1032	940	906	3137	2829
National	10361	9646	8942	8591	18281	16997

Source: HMIS, 2014

Table 99: Number of Birth Registration by Region (Non Gambian Parents) -2014

Regions	Early registration <1 years		Late registration 1-5 years		Late registration over 5 years	
	Male	Female	Male	Female	Male	Female
CRR	11	7	12	8	11	17
LRR	18	19	12	6	22	21
NBER	15	8	9	13	11	14
NBWR	10	6	14	20	19	14
URR	39	32	13	17	12	9
WHR1	188	166	192	159	118	114
WHR2	54	45	31	42	41	31
National	335	283	283	265	234	220

Source: HMIS, 2014

Table 100: Number of Birth Registration by Region- (Births Outside Gambia) – 2014

Regions	Early registration <1 Year		Late registration 1-5 years		Late registration over 5 years	
	Male	Female	Male	Female	Male	Female
CRR	3	3	1	2	1	7
LRR	3	1	3	0	4	3
NBER	3	1	4	3	2	3
NBWR	1	1	0	3	1	3
URR	14	10	16	8	13	6
WHR1	26	20	33	22	37	51
WHR2	34	20	12	8	6	8
National	84	56	69	46	64	81

Source: HMIS, 2014

21.0 Laboratory Services

Table 101: Number of Laboratory Test conducted in Central River region - 2014

	ANC	< 5 years		> 5 years		Total
	Female	Male	Female	Male	Female	
HB Test	10880	1299	1963	2787	6463	23392
Urine analysis	1222	211	391	665	2374	4863
Blood film	506	3104	3559	2864	5912	15945
Blood film positive	23	379	361	607	1253	2623
Blood film negative	118	1538	1554	1604	3834	8648
Sickle cell	53	138	159	136	209	695
RPR	2109	234	455	318	865	3981
TPHA	0	15	20	37	70	142
Stool microscopy	116	1	4	33	89	243
No. of cases tested for AFB	1	53	50	397	241	742
No. of AFB positive	0	4	5	57	52	118
Blood grouping	649	146	186	542	285	1808
No. blood donation	0	266	3	482	36	787
No. blood transfused	407	97	111	119	226	960

Source: HMIS, 2014

Table 102: Number of Laboratory Test conducted in Lower River region - 2014

	ANC	< 5 years		> 5 years		Total
	Female	Male	Female	Male	Female	
HB Test	3003	1958	1931	2162	4818	13872
Urine analysis	445	339	286	588	1712	3370
Blood film	309	1041	1043	1382	2555	6330
Blood film positive	3	7	32	91	73	206
Blood film negative	127	660	534	691	1224	3236
Sickle cell	8	90	70	72	151	391
RPR	386	14	10	277	238	925
TPHA	87	0	0	9	26	122
Stool microscopy	10	104	87	72	188	461
No. of cases tested for AFB	5	11	8	189	215	428
No. of AFB positive	1	2	0	30	8	41
Blood grouping	352	15	18	387	198	970
No. blood donation	0	0	0	321	28	349
No. blood transfused	100	11	12	50	80	253

Source: HMIS, 2014

Table 103: Number of Laboratory Test conducted in North Bank East Region – 2014

	ANC		< 5 years		> 5 years		Total
	Female	Male	Female	Male	Female	Male	
HB Test	5267	1969	1614	4696	5022		18568
Urine analysis	610	43	52	284	840		1829
Blood film	15	546	470	1015	1204		3250
Blood film positive	2	45	22	89	85		243
Blood film negative	5	377	357	776	809		2324
Sickle cell	1	12	9	36	35		93
RPR	643	0	0	14	34		691
TPHA	0	0	0	6	0		6
Stool microscopy	318	3	6	308	166		801
No. of cases tested for AFB	0	9	12	328	228		577
No. of AFB positive	0	0	0	46	15		61
Blood grouping	1503	39	46	1487	238		3313
No. blood donation	0	0	0	799	57		856
No. blood transfused	568	25	42	96	154		885

Source: HMIS, 2014

Table 104: Number of Laboratory Test conducted in North Bank West Region – 2014

	ANC		< 5 years		> 5 years		Total
	Female	Male	Female	Male	Female	Male	
HB Test	6401	1002	1222	1480	3337		13442
Urine analysis	2514	9	23	94	269		2909
Blood film	319	636	770	674	1112		3511
Blood film positive	6	6	18	50	38		118
Blood film negative	81	285	237	294	609		1506
Sickle cell	2491	15	13	27	101		2647
RPR	1384	62	72	114	381		2013
TPHA	12	0	0	0	2		14
Stool microscopy	16	20	72	17	179		304
No. of cases tested for AFB	0	34	26	109	109		278
No. of AFB positive	0	3	1	20	10		34
Blood grouping	123	51	21	89	107		391
No. blood donation	0	23	0	83	69		175
No. blood transfused	25	17	15	35	1232		1324

Source: HMIS, 2014

Table 105: Number of Laboratory Test conducted in Upper River region – 2014

	ANC	< 5 years		> 5 years		Total
	Female	Male	Female	Male	Female	
HB Test	8051	807	946	1756	4539	16099
Urine analysis	906	78	47	798	1940	3769
Blood film	61	546	509	1461	2732	5309
Blood film positive	1	15	16	170	227	429
Blood film negative	4	79	151	393	749	1376
Sickle cell	46	18	16	219	201	500
RPR	1133	16	8	210	526	1893
TPHA	0	1	2	5	12	20
Stool microscopy	0	0	0	73	266	339
No. of cases tested for AFB	1	0	0	331	270	602
No. of AFB positive	2	0	0	53	23	78
Blood grouping	0	44	60	430	1202	1736
No. blood donation	0	9	8	489	85	591
No. blood transfused	0	34	80	187	424	725

Source: HMIS, 2014

Table 106: Number of Laboratory Test conducted in Western Health Region1 – 2014

	ANC	< 5 years		> 5 years		Total
	Female	Male	Female	Male	Female	
HB Test	31859	21180	22386	45208	67468	188101
Urine analysis	17136	323	1002	8331	16255	43047
Blood film	5414	31949	30809	55698	82515	206385
Blood film positive	850	3548	3964	10458	12939	31759
Blood film negative	5876	20954	19646	32017	46369	124862
Sickle cell	4267	254	321	1237	1412	7491
RPR	10619	55	147	980	1314	13115
TPHA	334	1	4	129	244	712
Stool microscopy	11	52	40	429	240	772
No. of cases tested for AFB	4	47	46	2655	1568	4320
No. of AFB positive	0	10	9	610	319	948
Blood grouping	5717	58	38	1066	2074	8953
No. blood donation	6	2	2	1386	153	1549
No. blood transfused	99	13	16	1137	642	1907

Source: HMIS, 2014

Table 107: Number of Laboratory Test conducted in Western Health Region2 - 2014

	ANC		< 5 years		> 5 years		Total
	Female	Male	Female	Male	Female	Male	
HB Test	11603	4100	4957	10330	15778		46768
Urine analysis	2830	56	36	585	1408		4915
Blood film	1305	7376	6843	10319	18625		44468
Blood film positive	309	720	679	2141	2733		6582
Blood film negative	805	4519	4163	4828	10705		25020
Sickle cell	206	45	39	67	103		460
RPR	499	2	0	1	75		577
TPHA	0	0	0	0	0		0
Stool microscopy	0	1	0	60	54		115
No. of cases tested for AFB	26	37	7	724	756		1550
No. of AFB positive	9	3	2	223	153		390
Blood grouping	340	64	56	245	322		1027
No. blood donation	31	94	3	583	21		732
No. blood transfused	47	57	60	259	430		853

Source: HMIS, 2014

22.0 Village Health Services

In 2014, 61378 patients were seen by VHW. Out of this number, male constituted 51.53% and female 48.47%.

Table 108: Total number of patients seen by the Village Health Workers per region in - 2014

Regions	Male	Female
CRR	7306	6708
LRR	1529	1252
NBER	6950	6645
NBWR	6649	6126
URR	7600	7345
WHR 1	229	247
WHR 2	1368	1424
National	31631	29747

Source: HMIS, 2014

Table 109: Number of Suspected measles reported by the Village Health Workers by region – 2014

Regions	Male		Female	
	<5yrs	> 5yrs	<5yrs	>5yrs
CRR	1	0	0	0
LRR	1	0	0	0
NBER	0	0	0	0
NBWR	8	3	3	4
URR	5	0	3	0
WHR 1	4	0	2	0
WHR 2	3	1	1	0
National	22	4	9	4

Source: HMIS, 2014

Table 110: Number of Fast breathing reported by the Village Health Workers by region – 2014

Regions	Male		Female	
	<5yrs	>5yrs	<5yrs	>5yrs
CRR	1841	145	1875	114
LRR	15	0	12	0
NBER	146	116	153	120
NBWR	419	120	444	79
URR	977	43	917	28
WHR 1	0	0	0	0
WHR 2	155	7	120	18
National	3984	431	7864	4343

Source: HMIS, 2014

Table 111: Number of Diarrhoea cases reported by the Village Health Workers by Region – 2014

Regions	Male		Female	
	<5yrs	>5yrs	<5yrs	>5yrs
CRR	1407	233	1271	208
LRR	134	2	120	3
NBER	444	170	432	200
NBWR	636	204	629	196
URR	1889	552	1734	518
WHR 1	27	28	27	27
WHR 2	282	132	328	148
National	4819	1321	4541	1300

Source: HMIS, 2014

Table 112: Number of Uncomplicated RDT confirmed malaria reported by the Village Health Workers – 2014

Regions	Male		Female	
	<5yrs	>5yrs	<5yrs	>5yrs
CRR	174	451	142	343
LRR	0	0	0	0
NBER	9	21	3	14
NBWR	20	16	8	20
URR	97	211	69	164
WHR 1	0	0	1	0
WHR 2	56	69	70	66
National	182	317	151	264

Source: HMIS, 2014

23.0 Family Planning Services

Table 113: Condom consumption at the VHS

Regions	Number of Clients given condoms		Number of condoms issued	
	Male	Female	Male	Female
CRR	2186	77	6753	144
LRR	1294	48	5407	55
NBER	521	17	1885	69
NBWR	930	67	3957	249
URR	1344	101	5828	182
WHR 1	1159	45	7685	244
WHR 2	897	6	4245	16
National	8331	361	35760	959

Source: HMIS, 2014

Table 114: Number of Referrals by VHWs to the health facilities

Regions	Male		Female	
	<5yrs	>5yrs	<5yrs	>5yrs
CRR	1596	1073	1600	1072
LRR	1072	875	1022	832
NBER	1686	1457	1610	1514
NBWR	812	540	806	559
URR	1218	1048	1352	1082
WHR 1	184	134	144	132
WHR 2	774	404	718	376
National	7342	5531	7252	5567

Source: HMIS, 2014

Table 115: Number of Home Visits by VHWs and antenatal visits by TBAs

Regions	VHW Home visits	TBA Antenatal visits
CRR	5326	4674
LRR	4128	3357
NBER	5387	4967
NBWR	7038	3665
URR	3713	8323
WHR1	1710	866
WHR2	3940	3376
National	31242	29228

Source: HMIS, 2014

Table 116: Postpartum care and neonatal conditions reported by the TBAs

Regions	Postnatal visits made	Neonatal conjunctivitis		Neonatal tetanus	
	Female	Male	Female	Male	Female
CRR	13839	4	20	0	0
LRR	8924	6	16	4	0
NBER	8885	1	35	0	2
NBWR	11302	11	0	0	0
URR	30376	5	2	0	0
WHR1	1385	0	0	0	0
WHR2	8939	7	6	0	0
National	83650	34	79	4	2

Source: HMIS, 2014

Table 117: Family planning services conducted by the TBAs

Regions	Motivations Given		Referrals for Family Planning		Women Given Pills	Circle of Pills Issued
	Male	Female	Male	Female		
CRR	231	6	126	2	556	782
LRR	444	5	248	3	76	143
NBER	281	0	72	1	48	78
NBWR	232	6	71	0	42	120
URR	1072	73	713	24	1061	1572
WHR1	125	84	118	57	213	574
WHR2	123	47	45	6	183	339
National	2508	221	1393	93	2179	3608

Source: HMIS, 2014

Table 118: Number of Referrals by the TBAs to health facilities

Regions	Referrals to Health facility
CRR	524
LRR	9
NBER	273
NBWR	1021
URR	507
WHR1	306
WHR2	177
National	2817

Source: HMIS, 2014

Table 119: Number of Supervisory visits and Clinical activities conducted by the CHN

Regions	Supervisory Visits	RCH Clinics Attended	Mothers With identified problems visited
CRR	2088	663	115
LRR	1201	425	112
NBER	1912	457	98
NBWR	1748	521	115
URR	2038	615	204
WHR1	474	242	88
WHR2	1816	395	77
National	11277	3318	809

Source: HMIS, 2014

Table 120: Number of at risk children visited by the CHN

Regions	CHN community meetings attended	CHN others (include all IEC activities)
CRR	301	384
LRR	87	134
NBER	95	411
NBWR	167	249
URR	224	331
WHR1	13	11
WHR2	197	127
National	1084	1647

Source: HMIS, 2014

Table 121: Number of TB patients receiving DOTS in the Village Health Services

Regions	< 5 years		> 5 years	
	Male	Female	Male	Female
CRR	3	5	101	46
LRR	9	2	89	28
NBER	0	1	111	17
NBWR	25	23	36	78
URR	0	1	83	39
WHR1	37	32	74	70
WHR2	9	11	234	225
National	83	75	728	503

Source: HMIS, 2014

Table 122: Number of Deaths reported by the Village Health Services – 2014

Regions	Infant deaths		< 5 Years		> 5 Years	
	Male	Female	Male	Female	Male	Female
CRR	10	13	19	17	119	104
LRR	17	12	17	13	79	67
NBER	15	8	6	4	78	75
NBWR	6	7	19	21	47	43
URR	17	12	7	10	110	112
WHR1	0	2	20	7	49	29
WHR2	6	4	17	12	89	59
National	71	58	105	84	571	489

Source: HMIS, 2014

24.0 Drug Consumption

Table 123: Consumption of Essential Medicines by the public Health Facilities in 2014

Product Description	First Quarter	Second Quarter	Third Quarter	Fourth Quarter	Total
Artemether-lumefantrine 20/120 mg (6 tabs)	4,526	1,447	8,071	19,508	33,552
Artemether-lumefantrine 20/120 mg (12 tabs)	14,115	3,986	7,893	25,724	51,718
Artemether-lumefantrine 20/120 mg (18 tabs)	1,020	720	6,143	13,809	21,692
Artemether-lumefantrine 20/120 mg (24 tabs)	12,416	3,843	18,513	48,829	83,601
Rapid Diagnostic Test (RDT)	29,292	47,149	116,525	161,716	354,682
Quinine Sulphate 300mg tab	44,876	38,407	44,093	69,949	197,325
Quinine Sulphate 300mg /2ml(AMP)	7,606	4,585	7,317	24,480	43,988
Paracetamol 500 mg tabs	1,834,829	2,012,195	2,562,358	2,551,242	8,960,624
Paracetamol 100mg tab	1,078,006	1,036,532	1,208,597	818,690	4,141,825
Sulphadoxine + Pyrimethamine 500+25mg tab	88,217	72,133	105,368	98,429	364,147
Ferrous sulphate +Folic Acid 200mg tab	1,424,469	1,451,228	1,824,597	1,552,833	6,253,127
Oral Rehydrated Salts (SHT)	56,897	45,964	29,969	11,237	144,067
Magnesium sulphate injection 50% Amp	1,646	1,307	1,984	1,630	6,567
Oxytocin 10IU / ML Amp	17,161	13,947	11,383	7,740	50,231
Cotrimoxazole 480mg tab	1,182,212	1,140,783	1,261,942	438,290	4,023,227
Amoxicillin 250mg cap	913,507	724,842	930,940	506,030	3,075,319
Benzylicillin Sodium 1mu (Vial)	34,087	46,876	47,477	13,019	141,459
Mebendazole 500MG tab	42,850	54,875	49,020	34,458	181,203
Tetracycline Eye Ointment 1% (Tube)	5,316	5,260	4,900	1,186	16,662

Source: LMIS, 2014

Table 124: Consumption of ARV Medicines by public health facilities in 2014

Product Description	First Quarter	Second Quarter	Third Quarter	Fourth Quarter	Total
Abacavir + Lamivudine + Zidovudine 300+150+300 (Tab)	38,739	48,261	53,888	53,247	194,135
Didanosine 200mg Chewable Tablet (Tab)	0	0	0	0	0
Didanosine 250mg (Tab)	6,10	5,790	2,940	7,335	22,675
Didanosine 50mg (Tab)	0	0	0	0	0
Didanosine Chewable 100mg	0	0	0	0	0
Efavirenz (EFV) 200mg (Tab)	0	0	0	0	0
Efavirenz (EFV) 600mg (Tab)	24,839	22,386	21,677	17,084	85,986
Lamivudine (3TC) 10mg/ml oral solution (Bottle)	53	131	98	94	376
Lamivudine +Zidovudine+Nevirapine 150+300+200 (Tab)	421,508	444,357	450,666	437,304	1,753,835
Lamivudine 30mg + Stavudine 6mg+ Nevirapine 50mg	0	0	0	0	0
Lamivudine 30mg+ Nevirapine50mg+Zidovudine 60mg	15,392	8,749	7,260	360	31,761
lamivudine30mg + Zidovudine60mg	0	0	0	0	0
Lopinavir 200mg+Ritonavir 50mg (Tab)	143,360	170,081	176,161	157,794	647,396
Lopinavir/Ritonavir 100/25mg	0	0	0	0	0
Nevirapine (NVP) 200mg (Tab)	14,032	17,626	23,009	22,855	77,522
Nevirapine (NVP) 50mg/5ml oral suspension (Bottle)	155	81	146	197	579
Tenofovir (TDF) 300mg (Tab)	2,880	3,153	4,394	6,256	16,683
Tenofovir Disprovil Fumarate 300mg + Lamivudine 300 mg	24,334	26,486	20,473	13,767	85,060
Zidovudine 300mg+ Lamivudine 150mg (Tab)	93,070	123,763	105,195	80,663	402,691
Zidovudine (AZT) 10mg/ml syrup (Bottle)	176	180	143	184	683
Zidovudine (AZT) 300mg (Tab)	0	0	0	0	0

Source: LMIS, 2014